

Rittal – The System.

Faster – better – everywhere.

Wall console CP 40, stainless steel – CP 6665.000

Date : May 24, 2018

ENCLOSURES

POWER DISTRIBUTION

CLIMATE CONTROL

IT INFRASTRUCTURE

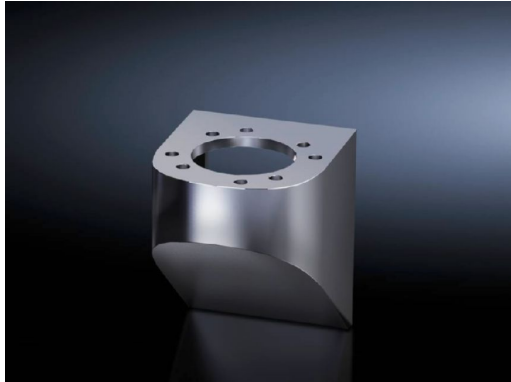
SOFTWARE & SERVICES

FRIEDHELM LOH GROUP



Wall console CP 40, stainless steel – CP 6665.000

created: 24.05.2018 build on www.rittal.com/us-en



Product description

Version: Rear, M8 thread

Applications: With drill for installation of
Base mounting bracket, swivel, CP 40, stainless steel (6663.500), with 4 screws
Wall/base mounting bracket, rigid, CP 40, stainless steel (6663.000), with 4 screws and nuts

Material: Stainless steel 1.4301 (AISI 304)

Surface finish: Brushed, grain 240

**Protection category
IP to IEC 60 529:** IP 69K

Product features

rigid: yes

Packaging unit: 1 pc(s).

**Weight/packaging
unit:** 1.5 kg (3.3 lb.)

EAN: 4028177122284

**Customs tariff
number:** 73269098

ETIM 6.0: EC000882

ETIM 5.0: EC000882

eCl@ss 8.0/8.1:	27400556
eCl@ss 7.0/7.1:	27189261
eCl@ss 6.0/6.1:	27189261
eCl@ss 5.1/5.1.4:	27189247
Product description (long):	CP Wall console CP 40, rear mounting, stainless steel, 1.4301
Approvals	
Declarations:	Manufacturer's declaration