

BALDOR® • *RELIANCE*

Product Information Packet

CSSEWDFM3558T

2HP, 1750RPM, 3PH, 60HZ, 145TC, 3528M, TEFC, F2

| Part Detail | | | | | | | |
|-------------|--------|-------------|------------|-------------|--------|---------------|------------|
| Revision: | - | Status: | PRD/A | Change #: | | Proprietary: | No |
| Type: | AC | Elec. Spec: | 35WGL773 | CD Diagram: | CD0005 | Mfg Plant: | |
| Mech. Spec: | 35Z330 | Layout: | 35LYZ330 | Poles: | 04 | Created Date: | 08-08-2017 |
| Base: | RG | Eff. Date: | 08-11-2017 | Leads: | 9#18 | | |

| Specs | | | |
|---------------------------------|-------------------------|--------------------------------|------------------------|
| Catalog Number: | CSSEWDFM3558T | Insulation Class: | H |
| Enclosure: | TEFC | Inverter Code: | Inverter Ready |
| Frame: | 145TC | KVA Code: | L |
| Frame Material: | Stainless Steel | Lifting Lugs: | No Lifting Lugs |
| Output @ Frequency: | 2.000 HP @ 60 HZ | Locked Bearing Indicator: | Locked Bearing |
| Synchronous Speed @ Frequency: | 1800 RPM @ 60 HZ | Motor Lead Quantity/Wire Size: | 9 @ 18 AWG |
| Voltage @ Frequency: | 460.0 V @ 60 HZ | Motor Lead Exit: | Ko Box |
| | 230.0 V @ 60 HZ | Motor Lead Termination: | Flying Leads |
| XP Division: | Not Applicable | Motor Type: | 3528M |
| Agency Approvals: | UR | Mounting Arrangement: | F2 |
| | CSA EEV | Power Factor: | 75 |
| | CSA | Product Family: | Washdown All Stainless |
| Auxillary Box: | No Auxillary Box | Pulley End Bearing Type: | Sealed Bearing |
| Auxillary Box Lead Termination: | None | Pulley Face Code: | C-Face |
| Base Indicator: | Rigid | Pulley Shaft Indicator: | Standard |
| Bearing Grease Type: | Polyrex EM (-20F +300F) | Rodent Screen: | None |
| Blower: | None | RoHS Status: | ROHS COMPLIANT |
| Current @ Voltage: | 2.800 A @ 460.0 V | Shaft Extension Location: | Pulley End |

| | | | |
|---------------------------------------|---------------------------|------------------------------------|---------------------|
| | 5.600 A @ 230.0 V | Shaft Ground Indicator: | No Shaft Grounding |
| | 5.800 A @ 208.0 V | Shaft Rotation: | Reversible |
| Design Code: | B | Shaft Slinger Indicator: | No Slinger |
| Drip Cover: | No Drip Cover | Speed Code: | Single Speed |
| Duty Rating: | CONT | Motor Standards: | NEMA |
| Electrically Isolated Bearing: | Not Electrically Isolated | Starting Method: | Direct on line |
| Feedback Device: | NO FEEDBACK | Thermal Device - Bearing: | None |
| Front Face Code: | Standard | Thermal Device - Winding: | None |
| Front Shaft Indicator: | None | Vibration Sensor Indicator: | No Vibration Sensor |
| Heater Indicator: | No Heater | Winding Thermal 1: | None |
| | | Winding Thermal 2: | None |

| Nameplate NP1953E01 | | | | | | | | | | | |
|---------------------|---------------|--|--|------|----|----------------|------|---|-----|-------|---|
| CAT.NO. | CSSEWDFM3558T | | | | | | | | | | |
| SPEC. | 35Z330L773G1 | | | | | | | | | | |
| HP | 2 | | | | | | | | | | |
| VOLTS | 230/460 | | | | | | | | | | |
| AMP | 5.6/2.8 | | | | | | | | | | |
| RPM | 1750 | | | | | | | | | | |
| FRAME | 145TC | | | | | HZ | 60 | | | PH | 3 |
| SER.F. | 1.15 | | | CODE | L | | DES | B | | CLASS | H |
| NEMA-NOM-EFF | 86.5 | | | | PF | 75 | | | | | |
| RATING | 40C AMB-CONT | | | | | | | | | | |
| CC | 010A | | | | | USABLE AT 208V | | | 5.8 | | |
| DE | 6205 | | | | | ODE | 6205 | | | | |
| ENCL | TEFC | | | SN | | | | | | | |
| | | | | | | | | | | | |

AC Induction Motor Performance Data

Record # 65619 - Typical performance - not guaranteed values

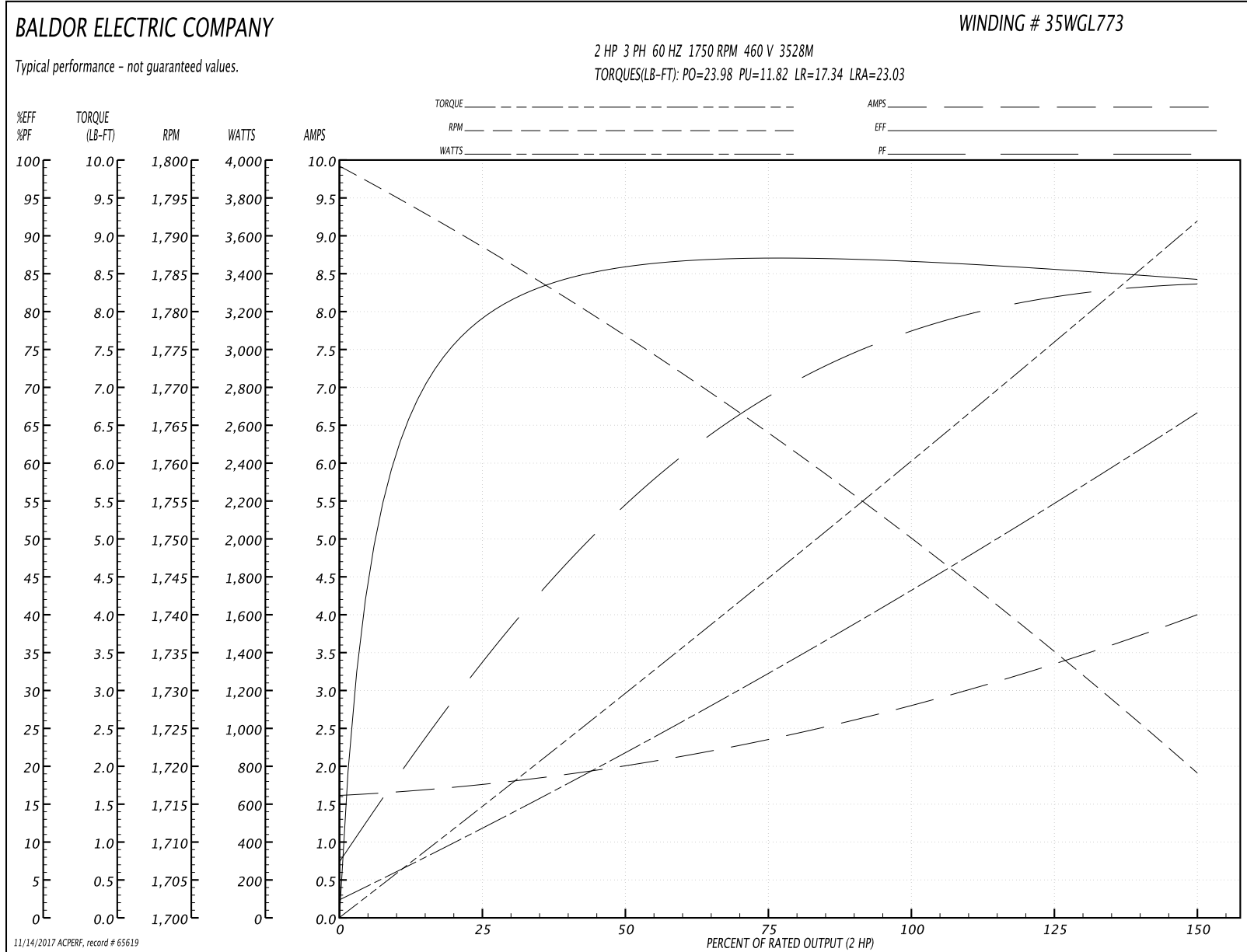
| | | |
|-------------------------------|--------------------|------------------------|
| Winding: 35WGL773-R001 | Type: 3528M | Enclosure: TEFC |
|-------------------------------|--------------------|------------------------|

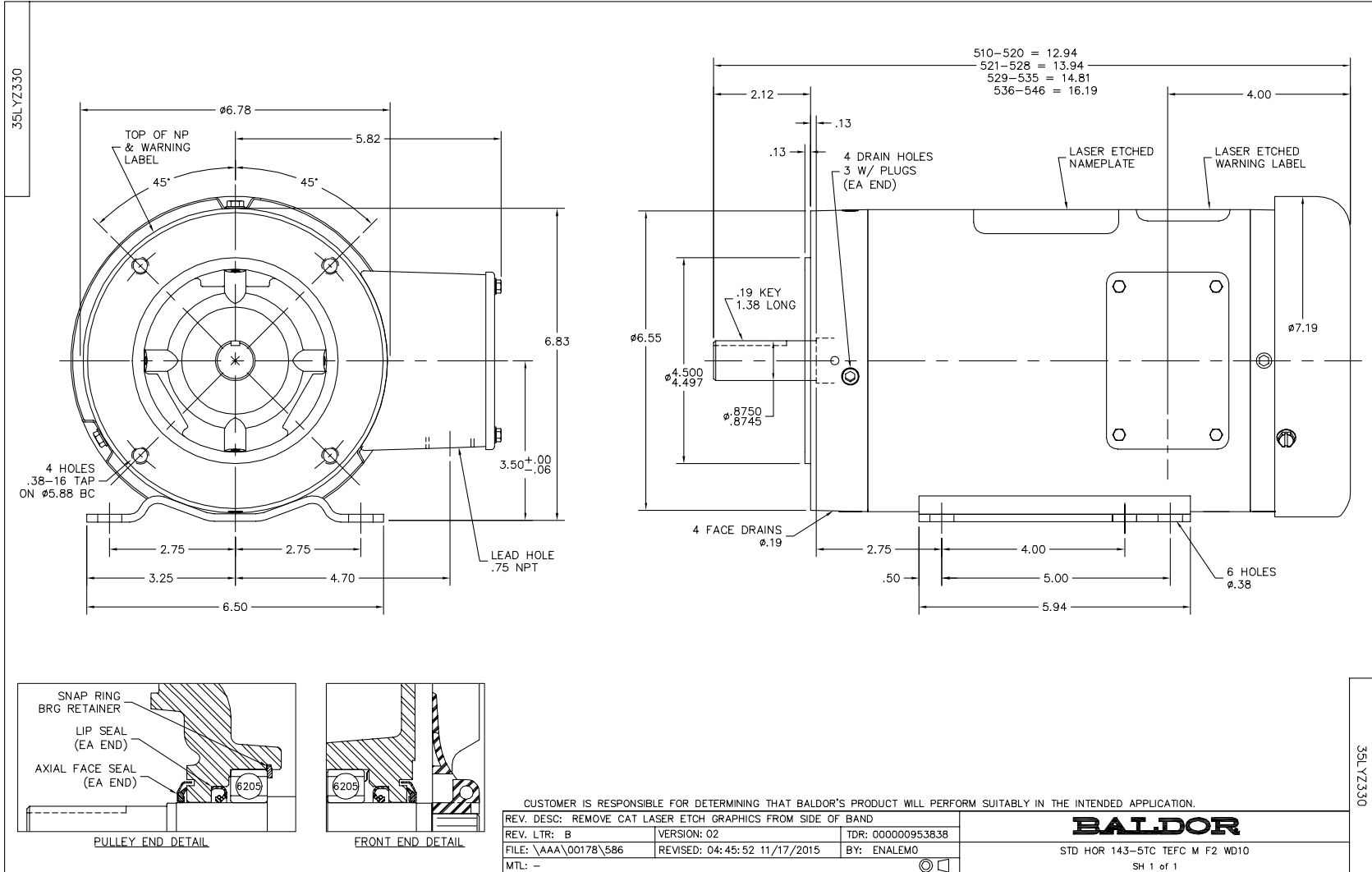
| Nameplate Data | | | | 460 V, 60 Hz: High Voltage Connection | |
|-----------------------|--------------|--------------|----|--|--------------------------|
| Rated Output (HP) | 2 | | | Full Load Torque | 6.01 LB-FT |
| Volts | 230/460 | | | Start Configuration | direct on line |
| Full Load Amps | 5.6/2.8 | | | Breakdown Torque | 23.98 LB-FT |
| R.P.M. | 1750 | | | Pull-up Torque | 11.82 LB-FT |
| Hz | 60 | Phase | 3 | Locked-rotor Torque | 17.34 LB-FT |
| NEMA Design Code | B | KVA Code | L | Starting Current | 23.03 A |
| Service Factor (S.F.) | 1.15 | | | No-load Current | 1.64 A |
| NEMA Nom. Eff. | 86.5 | Power Factor | 75 | Line-line Res. @ 25°C | 7.75 Ω |
| Rating - Duty | 40C AMB-CONT | | | Temp. Rise @ Rated Load | 74°C |
| S.F. Amps | | | | Temp. Rise @ S.F. Load | 89°C |
| | | | | Locked-rotor Power Factor | 49.2 |
| | | | | Rotor inertia | 0.165 LB-FT ² |

Load Characteristics 460 V, 60 Hz, 2 HP

| % of Rated Load | 25 | 50 | 75 | 100 | 125 | 150 | S.F. |
|-----------------|------|------|------|------|------|------|------|
| Power Factor | 34 | 54 | 69 | 77 | 81 | 84 | 79 |
| Efficiency | 78.3 | 85.7 | 87 | 86.6 | 85.8 | 84.1 | 86.1 |
| Speed | 1789 | 1778 | 1764 | 1750 | 1736 | 1719 | 1742 |
| Line amperes | 1.73 | 1.97 | 2.33 | 2.83 | 3.35 | 3.98 | 3.14 |

Performance Graph at 460V, 60Hz, 2.0HP Typical performance - Not guaranteed values





CD0005

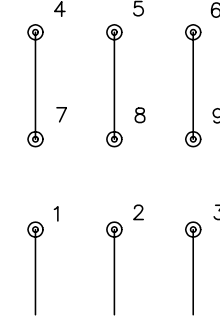


LOW VOLTAGE (2Y)



LINE

HIGH VOLTAGE (1Y)



LINE

NOTES:

1. INTERCHANGE ANY TWO LINE LEADS TO REVERSE ROTATION.
2. OPTIONAL THERMOSTATS ARE PROVIDED WHEN SPECIFIED.
3. ACTUAL NUMBER OF INTERNAL PARALLEL CIRCUITS MAY BE A MULTIPLE OF THOSE SHOWN ABOVE.
4. LEAD COLORS ARE OPTIONAL. LEADS MUST ALWAYS BE NUMBERED AS SHOWN.

| | | | |
|---|---------|-------------------------|--------------|
| REV. DESC: REVISE TO SHOW OPTIONAL COLORS | | | |
| REV. LTR: E | BY: JLP | REVISED: 01/19/99 10:15 | TDR: 0171435 |
| 90000 | | FILE: AAA00005140 | MDL: - |
| | | MTL: - | |

BALDOR ELECTRIC Co.

3PH, DV, 9 LEADS

CD0005