

Rittal – The System.

Faster – better – everywhere.

Comfort Panel – CP 6372.563

Date : May 24, 2018

ENCLOSURES

POWER DISTRIBUTION

CLIMATE CONTROL

IT INFRASTRUCTURE

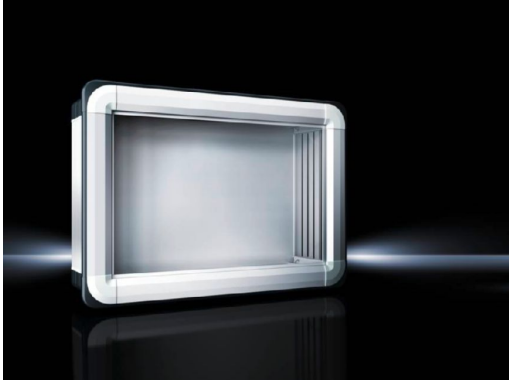
SOFTWARE & SERVICES

FRIEDHELM LOH GROUP



Comfort Panel – CP 6372.563

created: 24.05.2018 build on www.rittal.com/us-en



Product description

Version:	Support arm connection Ø 130 mm
Benefits:	Aluminum housing, high thermal conductivity for optimum passive heat dissipation. Low weight coupled with high stability Compatible with all Rittal stand and support arm systems
Material:	Housing: Extruded aluminum section Corner pieces: Die-cast zinc Corner protectors: Plastic
Color:	Housing: Natural anodized. Corner pieces: RAL 7035 Corner protectors: Similar to RAL 7024
Protection category IP to IEC 60 529:	IP 65
Protection category NEMA:	NEMA 12
Supply includes:	Enclosure with cut-out for support arm connection 3 mm double-bit lock insert may be exchanged for 41 mm lock inserts, plastic handles and T handles, type C Seals and assembly components for front panels Rear panel screwed, enclosure hinged at the front with side double-bit lock insert
Note:	The support arm connection may be swapped over by rotating the enclosure

Product features

For the configuration of subracks:	Suitable for front panel width: 520 mm (20 ")
---	---

Installation depth:	191 mm (7.5 ")
Suitable for front panels:	with height: 600 mm (24 ") with width: 520 mm (20 ")
Lock version:	Sickle-shaped locking nose
No. of locks:	2
Lock Insert:	3 mm double-bit
Packaging unit:	1 pc(s).
Weight/packaging unit:	16.7 kg (36.8 lb.)
EAN:	4028177663145
Customs tariff number:	94032080
ETIM 6.0:	EC002504
ETIM 5.0:	EC002504
eCl@ss 8.0/8.1:	27180505
eCl@ss 7.0/7.1:	27180505
eCl@ss 6.0/6.1:	27180505
eCl@ss 5.1/5.1.4:	27180505
Product description (long):	CP Compact Panel, for front panel BH 520x600 mm, installation depth 191 mm, Extruded aluminum section, Support arm connection Ø 130 mm, Screw-fastened rear panel
Approvals	
Approvals:	UL + C-UL
Declarations:	Declaration of conformity