

BALDOR® • RELIANCE

Product Information Packet

ANFL3514M

1.5HP, 1725RPM, 1PH, 60HZ, 56YZ, 3532LC, TEFC

Part Detail							
Revision:	V	Status:	PRD/A	Change #:		Proprietary:	No
Type:	AC	Elec. Spec:	35WGY843	CD Diagram:	CD0320	Mfg Plant:	
Mech. Spec:	35R216	Layout:	35LYR216	Poles:	04	Created Date:	
Base:	N	Eff. Date:	01-19-2017	Leads:	4#16 A&J,2#18 B PH,1#14 #4TH		

Specs			
Catalog Number:	ANFL3514M	Inverter Code:	Not Inverter
Enclosure:	TEFC	KVA Code:	J
Frame:	56YZ	Lifting Lugs:	No Lifting Lugs
Frame Material:	Steel	Locked Bearing Indicator:	No Locked Bearing
Output @ Frequency:	1.500 HP @ 60 HZ	Motor Lead Quantity/Wire Size:	4 @ 16 AWG, A&J
Synchronous Speed @ Frequency:	1800 RPM @ 60 HZ	Motor Lead Exit:	Ko Box
Voltage @ Frequency:	230.0 V @ 60 HZ	Motor Lead Termination:	Flying Leads
	115.0 V @ 60 HZ	Motor Type:	3532LC
XP Class and Group:	None	Mounting Arrangement:	F1
XP Division:	Not Applicable	Power Factor:	73
Agency Approvals:	CSA	Product Family:	General Purpose
	UR	Product Type:	FARM DUTY
Auxillary Box:	No Auxillary Box	Pulley End Bearing Type:	Ball
Auxillary Box Lead Termination:	None	Pulley Face Code:	Oil Burner Flange
Base Indicator:	No Mounting	Pulley Shaft Indicator:	Standard
Bearing Grease Type:	Polyrex EM (-20F +300F)	Rodent Screen:	None
Blower:	None	Shaft Extension Location:	Double Shaft
Current @ Voltage:	18.000 A @ 115.0 V	Shaft Ground Indicator:	No Shaft Grounding

	9.000 A @ 208.0 V	Shaft Rotation:	Reversible
	9.000 A @ 230.0 V	Shaft Slinger Indicator:	No Slinger
Design Code:	L	Speed Code:	Single Speed
Drip Cover:	No Drip Cover	Motor Standards:	NEMA
Duty Rating:	CONT	Starting Method:	Direct on line
Electrically Isolated Bearing:	Not Electrically Isolated	Thermal Device - Bearing:	None
Feedback Device:	NO FEEDBACK	Thermal Device - Winding:	None
Front Face Code:	Standard	Vibration Sensor Indicator:	No Vibration Sensor
Front Shaft Indicator:	Multiple Flats	Winding Thermal 1:	Manual Thermal Overload
Heater Indicator:	No Heater	Winding Thermal 1 Location:	KO
Insulation Class:	F	Winding Thermal 2:	None

Nameplate NP1280L											
CAT.NO.	ANFL3514M										
SPEC.	35R216Y843										
HP	1.5										
VOLTS	115/230										
AMP	18/9										
RPM	1725										
FRAME	56YZ				HZ	60			PH	1	
SER.F.	1.00				CODE	J		DES	L	CL	F
NEMA-NOM-EFF	75.5				PF	73					
RATING	40C AMB-CONT										
CC								USABLE AT 208V	9		
DE	6203				ODE	6203					
ENCL	TEFC				SN						

AC Induction Motor Performance Data

Record # 61279 - Typical performance - not guaranteed values

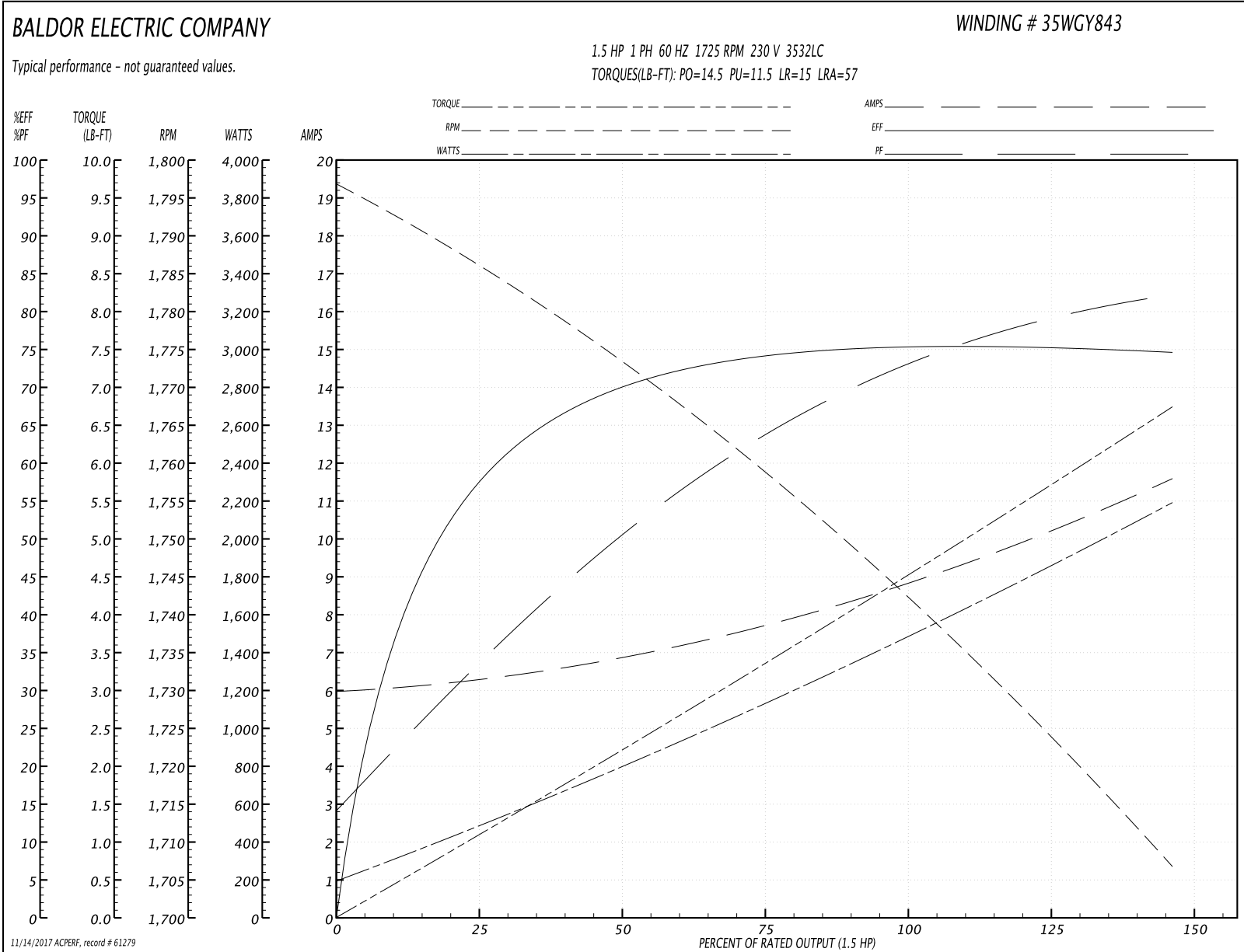
Winding: 35WGY843-R006	Type: 3532LC	Enclosure: TEFC
-------------------------------	---------------------	------------------------

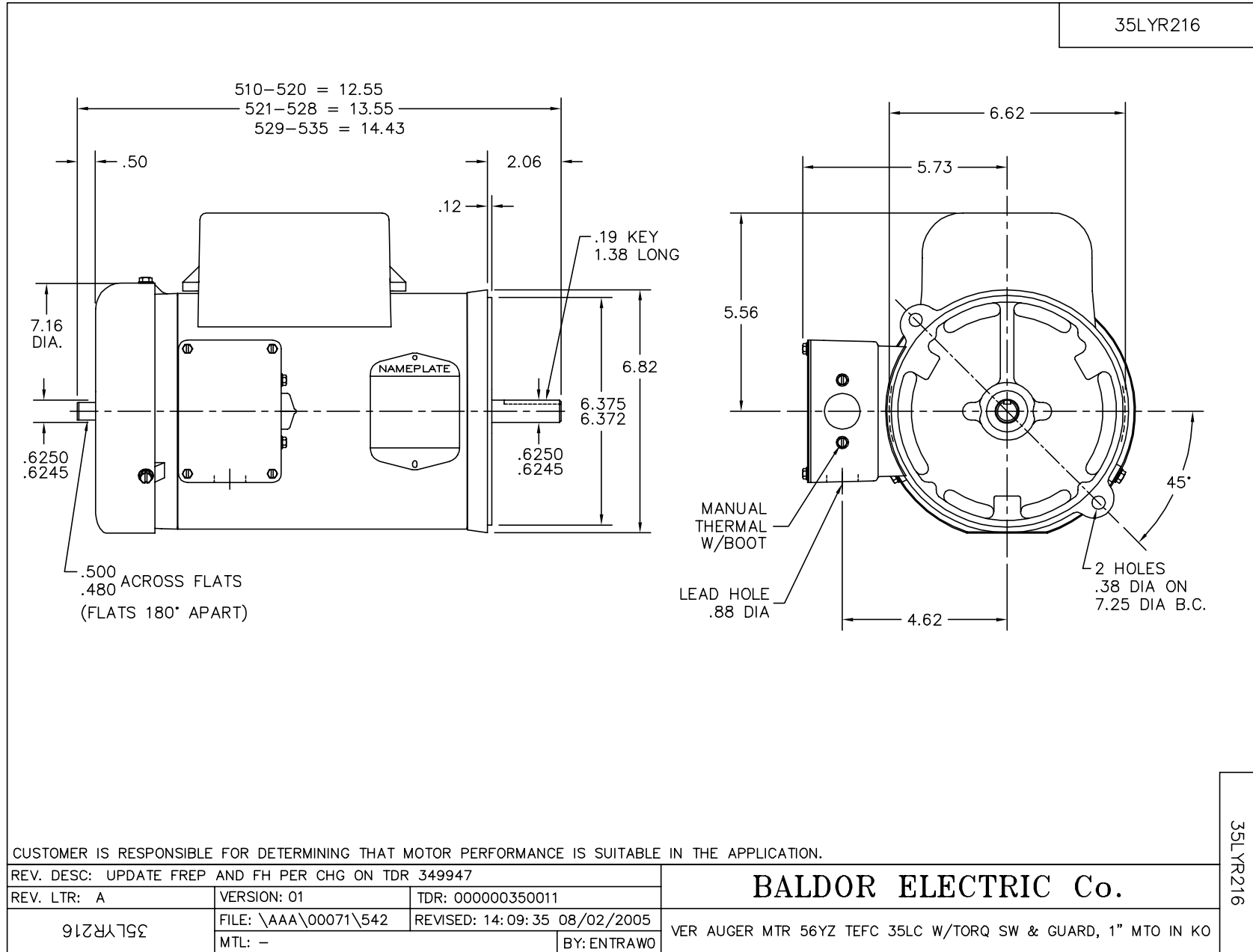
Nameplate Data				230 V, 60 Hz: High Voltage Connection	
Rated Output (HP)	1.5			Full Load Torque	4.5 LB-FT
Volts	115/230			Start Configuration	direct on line
Full Load Amps	18/9			Breakdown Torque	14.5 LB-FT
R.P.M.	1725			Pull-up Torque	11.5 LB-FT
Hz	60	Phase	1	Locked-rotor Torque	15 LB-FT
NEMA Design Code	L	KVA Code	J	Starting Current	57 A
Service Factor (S.F.)	1			No-load Current	6 A
NEMA Nom. Eff.	75.5	Power Factor	73	Line-line Res. @ 25°C	1.41 Ω A Ph 1.18 Ω B Ph
Rating - Duty	40C AMB-CONT			Temp. Rise @ Rated Load	

Load Characteristics 230 V, 60 Hz, 1.5 HP

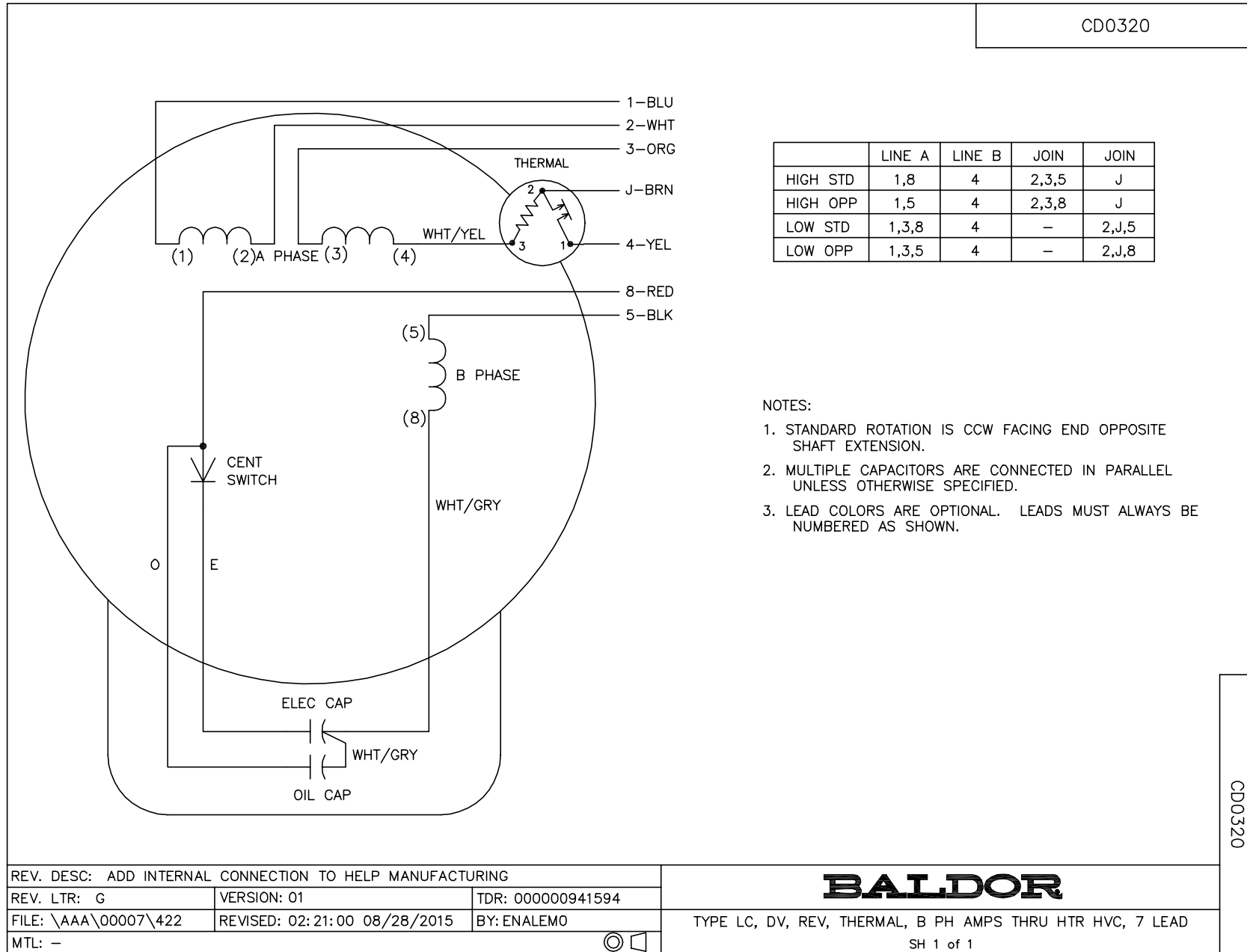
% of Rated Load	25	50	75	100	125	150
Power Factor	34	50	63	73	77	81
Efficiency	58	70	74	75.5	75.5	74.5
Speed	1784	1773	1759	1743	1726	1706
Line amperes	6.3	6.8	7.7	9	10	11.6

Performance Graph at 230V, 60Hz, 1.5HP Typical performance - Not guaranteed values





CD0320



	LINE A	LINE B	JOIN	JOIN
HIGH STD	1,8	4	2,3,5	J
HIGH OPP	1,5	4	2,3,8	J
LOW STD	1,3,8	4	-	2,J,5
LOW OPP	1,3,5	4	-	2,J,8

NOTES:

1. STANDARD ROTATION IS CCW FACING END OPPOSITE SHAFT EXTENSION.
2. MULTIPLE CAPACITORS ARE CONNECTED IN PARALLEL UNLESS OTHERWISE SPECIFIED.
3. LEAD COLORS ARE OPTIONAL. LEADS MUST ALWAYS BE NUMBERED AS SHOWN.

CD0320

REV. DESC: ADD INTERNAL CONNECTION TO HELP MANUFACTURING		
REV. LTR: G	VERSION: 01	TDR: 000000941594
FILE: \AAA\00007\422	REVISED: 02:21:00 08/28/2015	BY: ENALEMO
MTL: -	© □	

BALDOR

TYPE LC, DV, REV, THERMAL, B PH AMPS THRU HTR HVC, 7 LEAD

SH 1 of 1