

ALL	600A Deadbreak Cam-Op Retaining Sleeve	650RSC
-----	--	--------



Features:

- Fully rated 15/25/35kV, 600 Amp Deadbreak Cam-Op Retaining Sleeve
- Part of an assembly that can be easily connected or disconnected using standard hand tools and equipment in a de-energized state
- Optional accessories allow visible external separation, by-pass, isolation, dead-ending, grounding, and testing as well as adding taps, surge arrestors, and circuit protection
- Built in hex design for easy torquing into place

650RSC Cam-Op Retaining Sleeve

Applications:

The 650RSC is used in all of the Cam-Op kits in conjunction with the K650LBM3 or K650LB bushing interfaces. Using a 600ATM assembly tool with the built in hex torquing feature allows for tight fitting connections which allow the locking and unlocking of the Cam-Op link.

Ratings:

Meets ANSI/IEEE Standard 386, Latest Revision

For 15kV Voltage Class:

8.3kV Max Phase-to-Ground – Operating Voltage
14.4kV Max Phase-to-Phase
95kV BIL – Impulse Withstand (1.2 x 50 microsecond wave)
34kV AC – One minute withstand
53kV DC – 15 minutes withstand
11kV AC – Corona Extinction @ 3pC sensitivity
200 Amp – Continuous and Loadbreak
10kA Sym – 10 Cycles Momentary & Fault Close

For 25kV Voltage Class:

16.2kV Max Phase-to-Ground – Operating Voltage
28kV Max Phase-to-Phase
140kV BIL – Impulse Withstand (1.2 x 50 microsecond wave)
45kV AC – One minute withstand
84kV DC – 15 minutes withstand
21.5kV AC – Corona Extinction @ 3pC sensitivity
600 Amp – Continuous
25kA Sym – 10 Cycles Momentary & Fault Close

For 35kV Voltage Class:

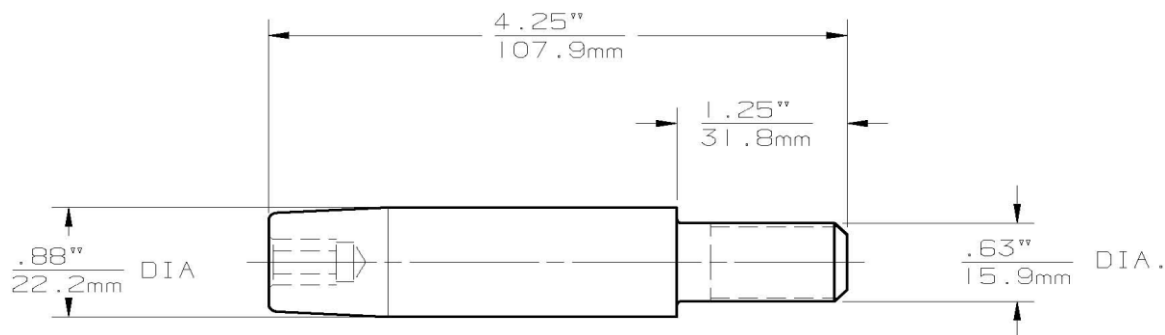
21.1kV Max Phase-to-Ground – Operating Voltage
36.6kV Max Phase-to-Phase
150kV BIL – Impulse Withstand (1.2 x 50 microsecond wave)
50kV AC – One minute withstand
103kV DC – 15 minutes withstand
26kV AC – Corona Extinction @ 3pC sensitivity
600 Amp – Continuous
25kA Sym – 10 Cycles Momentary

Issue Date: 10/04/2012

Page: 2 of 2

File: PSS-650RSC

ALL	600A Deadbreak Cam-Op Retaining Sleeve	650RSC
-----	---	--------



Ordering Instructions:

To order 15/25/35kV, 600A cam-op retaining sleeve, specify **650RSC**.

Each kit contains the following:

- | | | |
|---|-------------------------|--------|
| 1 | Cam-Op retaining sleeve | 650RSC |
| 1 | Tube, lubricant | 82-08 |