

Cylinder Lock Kit

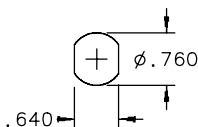


A Pentair Company

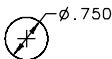
Hoffman Enclosures Inc.

2100 Hoffman Way
Anoka, MN 55303-1745
(763) 422-2211 Tel
www.hoffmanonline.com

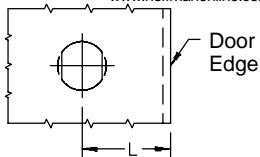
Mounting Hole Required



**Punched Hole
(Preferred)**

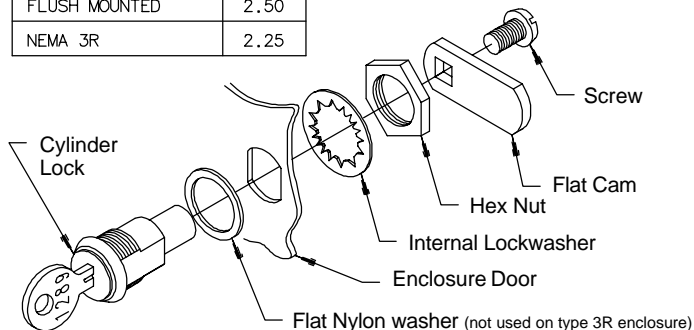


Drilled Hole



**Location of
Mounting Hole**

ENCLOSURE	L
NEMA 12 OR 4	1.69
FLUSH MOUNTED	2.50
NEMA 3R	2.25



WARNING

To avoid electric shock, do not energize any circuits before all internal and external electrical and mechanical clearances are checked to assure that all assembled equipment functions safely and properly.