

BALDOR® • RELIANCE

Product Information Packet

GDL1607T

7.5HP,1725RPM,1PH,60HZ,215TZ,3744LC,ODTF

Part Detail

Revision:	E	Status:	PRD/A	Change #:		Proprietary:	No
Type:	AC	Elec. Spec:	37WG1630	CD Diagram:	CD0086	Mfg Plant:	
Mech. Spec:	37M320	Layout:	37LYM320	Poles:	04	Created Date:	02-09-2010
Base:	RG	Eff. Date:	03-01-2017	Leads:	2#8 A PH,2#14 B PH		

Specs

Catalog Number:	GDL1607T	KVA Code:	J
Enclosure:	ODTF	Lifting Lugs:	Standard Lifting Lugs
Frame:	215TZ	Locked Bearing Indicator:	Locked Bearing
Frame Material:	Steel	Motor Lead Quantity/Wire Size:	2 @ 8 AWG, A PH
Output @ Frequency:	7.500 HP @ 60 HZ	Motor Lead Exit:	Cap Box
Synchronous Speed @ Frequency:	1800 RPM @ 60 HZ	Motor Lead Termination:	Flying Leads
Voltage @ Frequency:	230.0 V @ 60 HZ	Motor Type:	3744LC
XP Class and Group:	None	Mounting Arrangement:	F1
XP Division:	Not Applicable	Power Factor:	90
Agency Approvals:	UR	Product Family:	General Purpose
	CSA	Product Type:	FARM DUTY
Auxiliary Box:	No Auxiliary Box	Pulley End Bearing Type:	Sealed Bearing
Auxiliary Box Lead Termination:	None	Pulley Face Code:	C-Face
Base Indicator:	Rigid	Pulley Shaft Indicator:	Standard
Bearing Grease Type:	Polyrex EM (-20F +300F)	Rodent Screen:	Included
Blower:	None	Shaft Extension Location:	Pulley End
Current @ Voltage:	32.000 A @ 230.0 V	Shaft Ground Indicator:	No Shaft Grounding
Design Code:	L	Shaft Rotation:	Reversible

Drip Cover:	No Drip Cover	Shaft Slinger Indicator:	Shaft Slinger
Duty Rating:	CONT	Speed Code:	Single Speed
Electrically Isolated Bearing:	Not Electrically Isolated	Motor Standards:	NEMA
Feedback Device:	NO FEEDBACK	Starting Method:	Direct on line
Front Face Code:	Standard	Thermal Device - Bearing:	None
Front Shaft Indicator:	None	Thermal Device - Winding:	Normally Closed Thermostat
Heater Indicator:	No Heater	Vibration Sensor Indicator:	No Vibration Sensor
Insulation Class:	F	Winding Thermal 1:	None
Inverter Code:	Not Inverter	Winding Thermal 2:	None

Nameplate NP1256L

CAT.NO.	GDL1607T									
SPEC.	37M320-1630G1									
HP	7.5									
VOLTS	230									
AMP	32									
RPM	1725									
FRAME	215TZ				HZ		60		PH	1
SER.F.	1.15		CODE		J	DES		L	CLASS	F
NEMA-NOM-EFF	82.5			PF		90				
RATING	40C AMB-CONT									
CC				USABLE AT 208V						
DE	6307				ODE		6206			
ENCL	ODTF		SN							

AC Induction Motor Performance Data

Record # 37082 - Typical performance - not guaranteed values

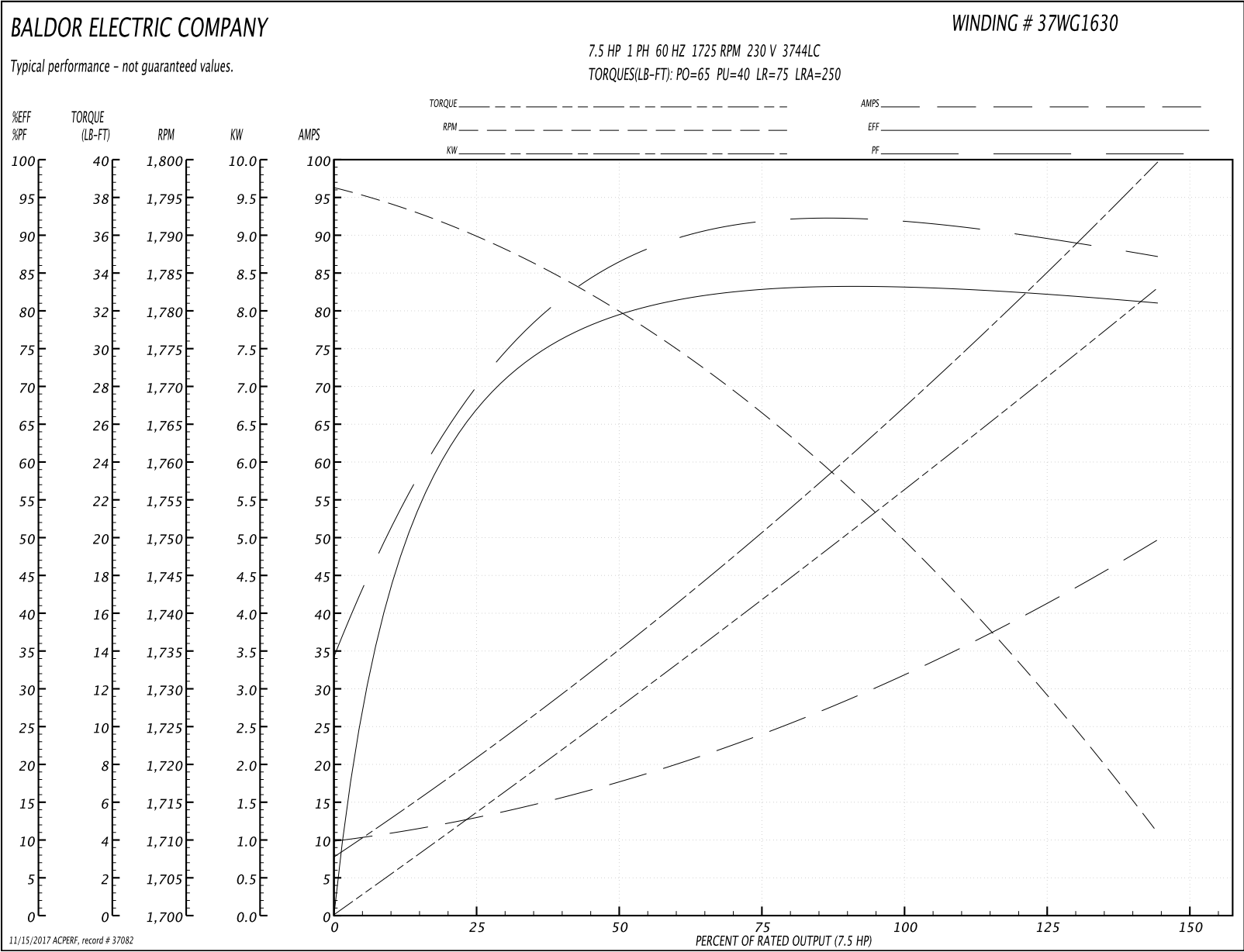
Winding: 37WG1630-R002	Type: 3744LC	Enclosure: ODTF
-------------------------------	---------------------	------------------------

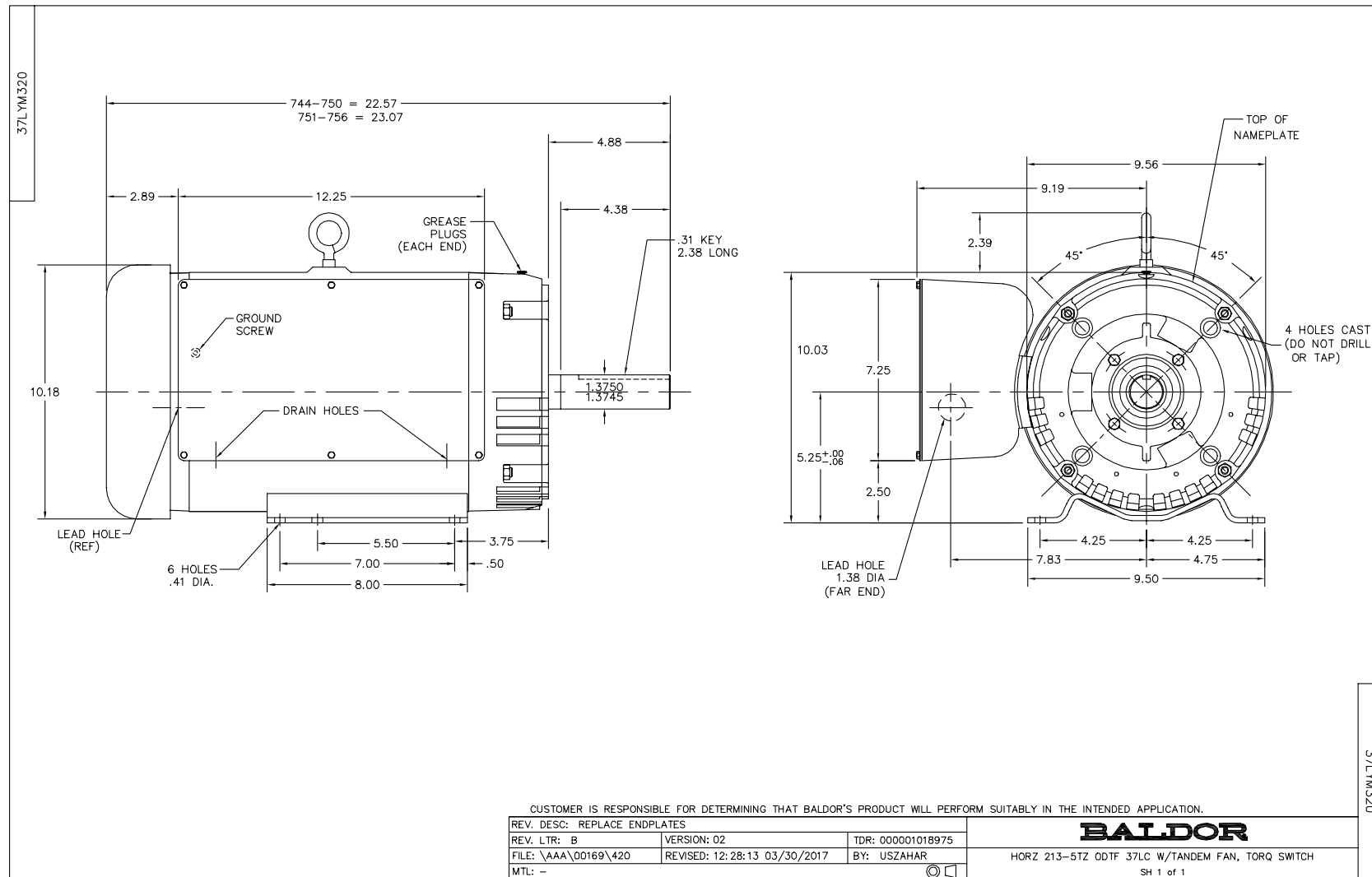
Nameplate Data				230 V, 60 Hz: Single Voltage Motor	
Rated Output (HP)	7.5			Full Load Torque	22.3 LB-FT
Volts	230			Start Configuration	direct on line
Full Load Amps	32			Breakdown Torque	65 LB-FT
R.P.M.	1725			Pull-up Torque	40 LB-FT
Hz	60	Phase	1	Locked-rotor Torque	75 LB-FT
NEMA Design Code	L	KVA Code	J	Starting Current	250 A
Service Factor (S.F.)	1.15			No-load Current	10 A
NEMA Nom. Eff.	82.5	Power Factor	90	Line-line Res. @ 25°C	0.187 Ω A Ph 1.18 Ω B Ph
Rating - Duty	40C AMB-CONT			Temp. Rise @ Rated Load	69°C
S.F. Amps				Temp. Rise @ S.F. Load	77°C

Load Characteristics 230 V, 60 Hz, 7.5 HP

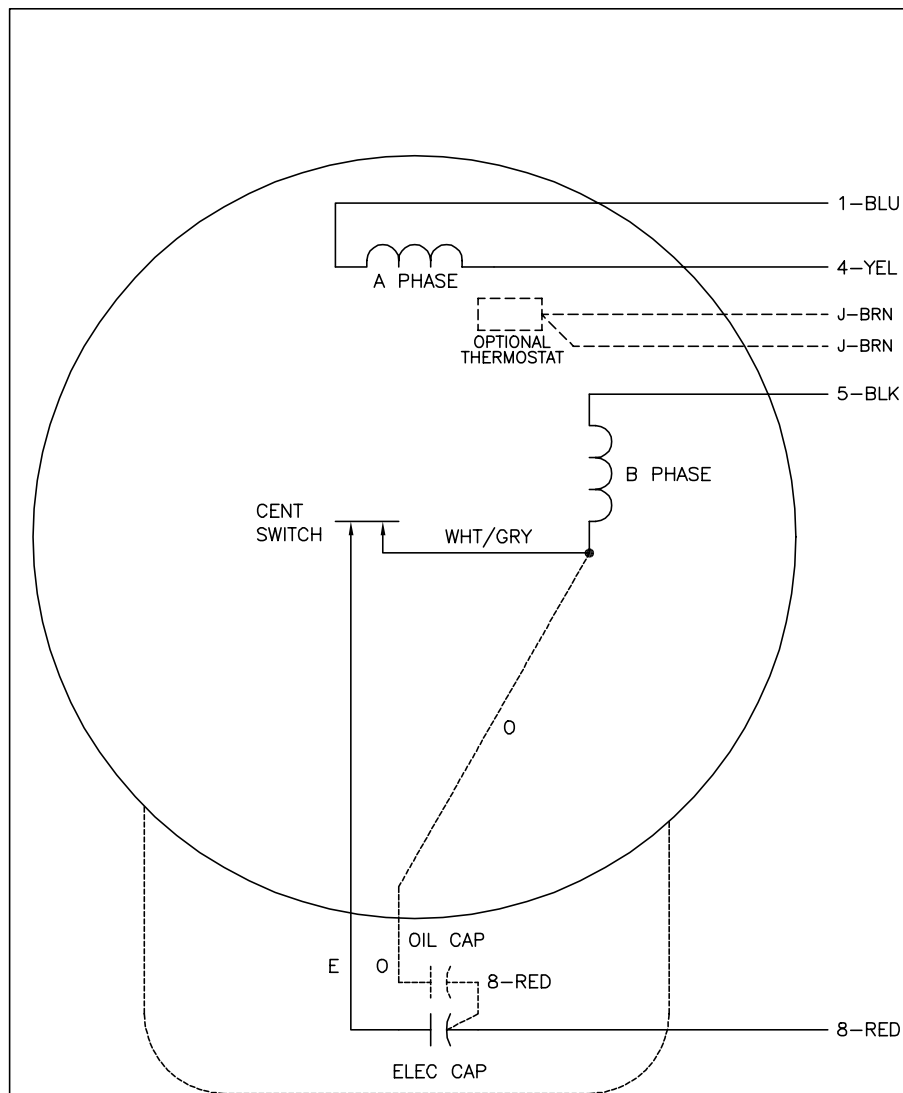
% of Rated Load	25	50	75	100	125	150	S.F.
Power Factor	74	87	91	91	90	87	90
Efficiency	66.3	78.9	82.6	83.6	83.2	80.5	83.4
Speed	1788	1778	1766	1751	1735	1708	1741
Line amperes	12.6	18.1	24.4	31.6	39.9	50	36.6

Performance Graph at 230V, 60Hz, 7.5HP Typical performance - Not guaranteed values





CD0086



	LINE A	LINE B
STD	1,8	4,5
OPP	1,5	4,8

NOTES:

1. STANDARD ROTATION IS CCW FACING END OPPOSITE SHAFT EXTENSION.
2. OPTIONAL THERMOSTAT IS PROVIDED WHEN SPECIFIED.
3. MULTIPLE CAPACITORS ARE CONNECTED IN PARALLEL UNLESS OTHERWISE SPECIFIED.
4. OPTIONAL OIL CAPACITOR IS PROVIDED WHEN SPECIFIED.
5. CAPACITORS MAY BE SEPERATELY MOUNTED.
6. LEAD COLORS ARE OPTIONAL. LEADS MUST ALWAYS BE NUMBERED AS SHOWN.

REV. DESC: ADDED CK TO PLANT CODE

REV. LTR: F BY: JD REVISED: 16:01:12 01/07/2002 TDR: 259409

980000

FILE: AAA00026904

REF: CD0086

MTL: -

BALDOR ELECTRIC Co.

TYPE L OR LC, SV, REV, 4 LEADS, CAPS MAY BE SEP MTD

CD0086