

BALDOR® • ***RELIANCE***

Product Information Packet

CWDL3507

.75HP, 1725RPM, 1PH, 60HZ, 56C, 3520L, TEFC, F1

Part Detail							
Revision:	AB	Status:	PRD/A	Change #:		Proprietary:	No
Type:	AC	Elec. Spec:	35WGX935	CD Diagram:	CD0001	Mfg Plant:	
Mech. Spec:	35S576	Layout:	35LYS576	Poles:	04	Created Date:	
Base:	RG	Eff. Date:	08-01-2017	Leads:	6#18		

Specs			
Catalog Number:	CWDL3507	Insulation Class:	F
Enclosure:	TEFC	Inverter Code:	Not Inverter
Frame:	56C	KVA Code:	N
Frame Material:	Steel	Lifting Lugs:	No Lifting Lugs
Output @ Frequency:	.750 HP @ 60 HZ	Locked Bearing Indicator:	Locked Bearing
Synchronous Speed @ Frequency:	1800 RPM @ 60 HZ	Motor Lead Quantity/Wire Size:	6 @ 18 AWG
Voltage @ Frequency:	230.0 V @ 60 HZ	Motor Lead Exit:	Ko Box
	115.0 V @ 60 HZ	Motor Lead Termination:	Flying Leads
XP Class and Group:	None	Motor Type:	3520L
XP Division:	Not Applicable	Mounting Arrangement:	F1
Agency Approvals:	CSA	Power Factor:	64
	UR	Product Family:	Wash Down
Auxillary Box:	No Auxillary Box	Pulley End Bearing Type:	Sealed Bearing
Auxillary Box Lead Termination:	None	Pulley Face Code:	C-Face
Base Indicator:	Rigid	Pulley Shaft Indicator:	Standard
Bearing Grease Type:	Polyrex EM (-20F +300F)	Rodent Screen:	None
Blower:	None	Shaft Extension Location:	Pulley End
Current @ Voltage:	11.000 A @ 115.0 V	Shaft Ground Indicator:	No Shaft Grounding

	5.500 A @ 230.0 V	Shaft Rotation:	Reversible
	7.000 A @ 208.0 V	Shaft Slinger Indicator:	Shaft Slinger
Design Code:	N	Speed Code:	Single Speed
Drip Cover:	No Drip Cover	Motor Standards:	NEMA
Duty Rating:	CONT	Starting Method:	Direct on line
Electrically Isolated Bearing:	Not Electrically Isolated	Thermal Device - Bearing:	None
Feedback Device:	NO FEEDBACK	Thermal Device - Winding:	None
Front Face Code:	Standard	Vibration Sensor Indicator:	No Vibration Sensor
Front Shaft Indicator:	None	Winding Thermal 1:	None
Heater Indicator:	No Heater	Winding Thermal 2:	None

Nameplate NP1496L										
CAT.NO.	CWDL3507									
SPEC.	35S576X935G1									
HP	.75									
VOLTS	115/230									
AMP	11/5.5									
RPM	1725									
FRAME	56C				HZ	60			PH	1
SER.F.	1.25		CODE	N	DES	N		CLASS	F	
NEMA-NOM-EFF	68		PF	64						
RATING	40C AMB-CONT									
CC								USABLE AT 208V	7	
DE	6205				ODE	6203				
ENCL	TEFC		SN							
	SFA 12.6/6.3									

AC Induction Motor Performance Data

Record # 20602 - Typical performance - not guaranteed values

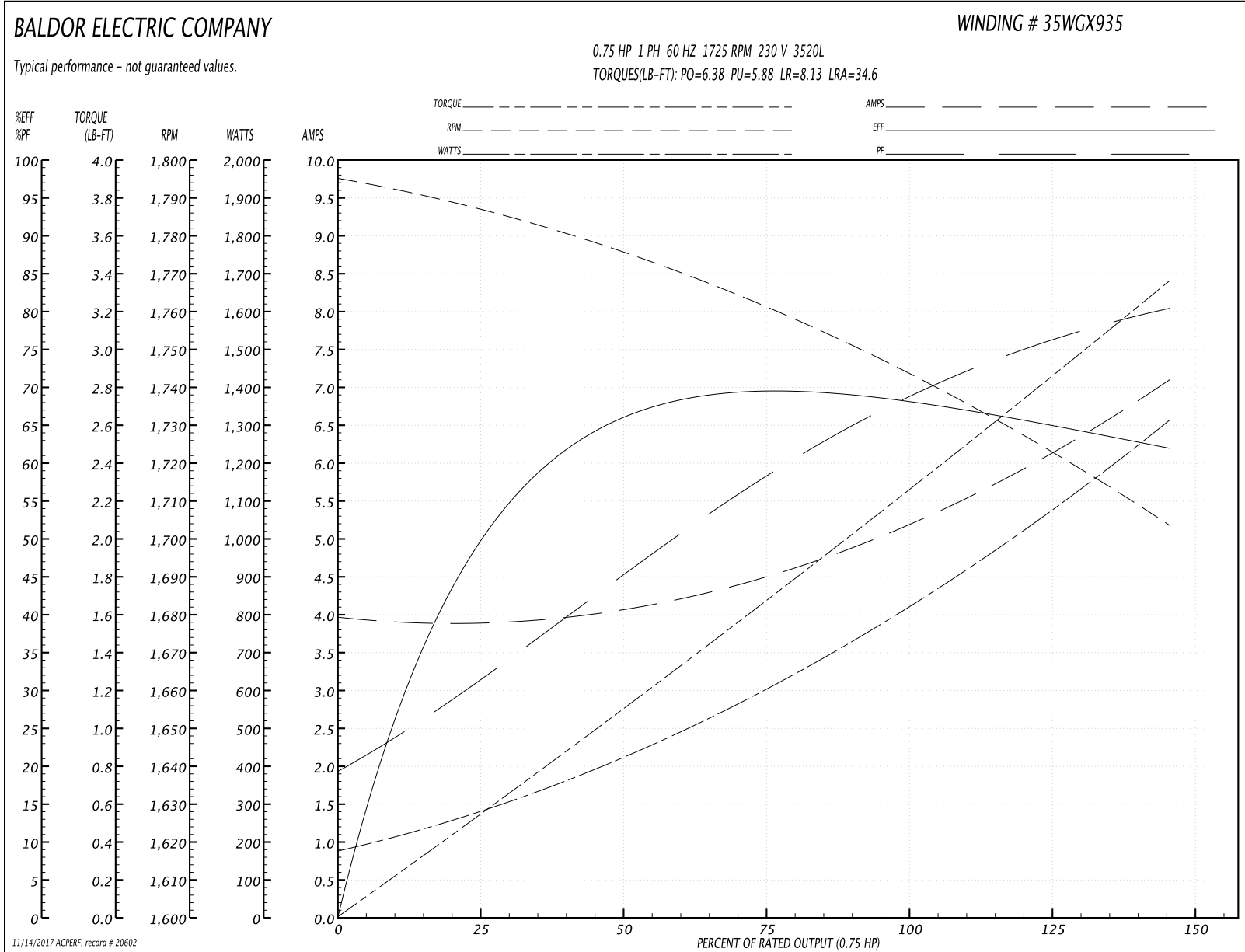
Winding: 35WGx935-R002	Type: 3520L	Enclosure: TEFC
-------------------------------	--------------------	------------------------

Nameplate Data				230 V, 60 Hz: High Voltage Connection	
Rated Output (HP)	.75			Full Load Torque	2.25 LB-FT
Volts	115/230			Start Configuration	direct on line
Full Load Amps	11/5.5			Breakdown Torque	6.38 LB-FT
R.P.M.	1725			Pull-up Torque	5.88 LB-FT
Hz	60	Phase	1	Locked-rotor Torque	8.13 LB-FT
NEMA Design Code	N	KVA Code	N	Starting Current	34.6 A
Service Factor (S.F.)	1.25			No-load Current	3.9 A
NEMA Nom. Eff.	68	Power Factor	64	Line-line Res. @ 25°C	2.89 Ω A Ph 1.47 Ω B Ph
Rating - Duty	40C AMB-CONT			Temp. Rise @ Rated Load	70°C
S.F. Amps	12.6/6.3			Temp. Rise @ S.F. Load	89°C

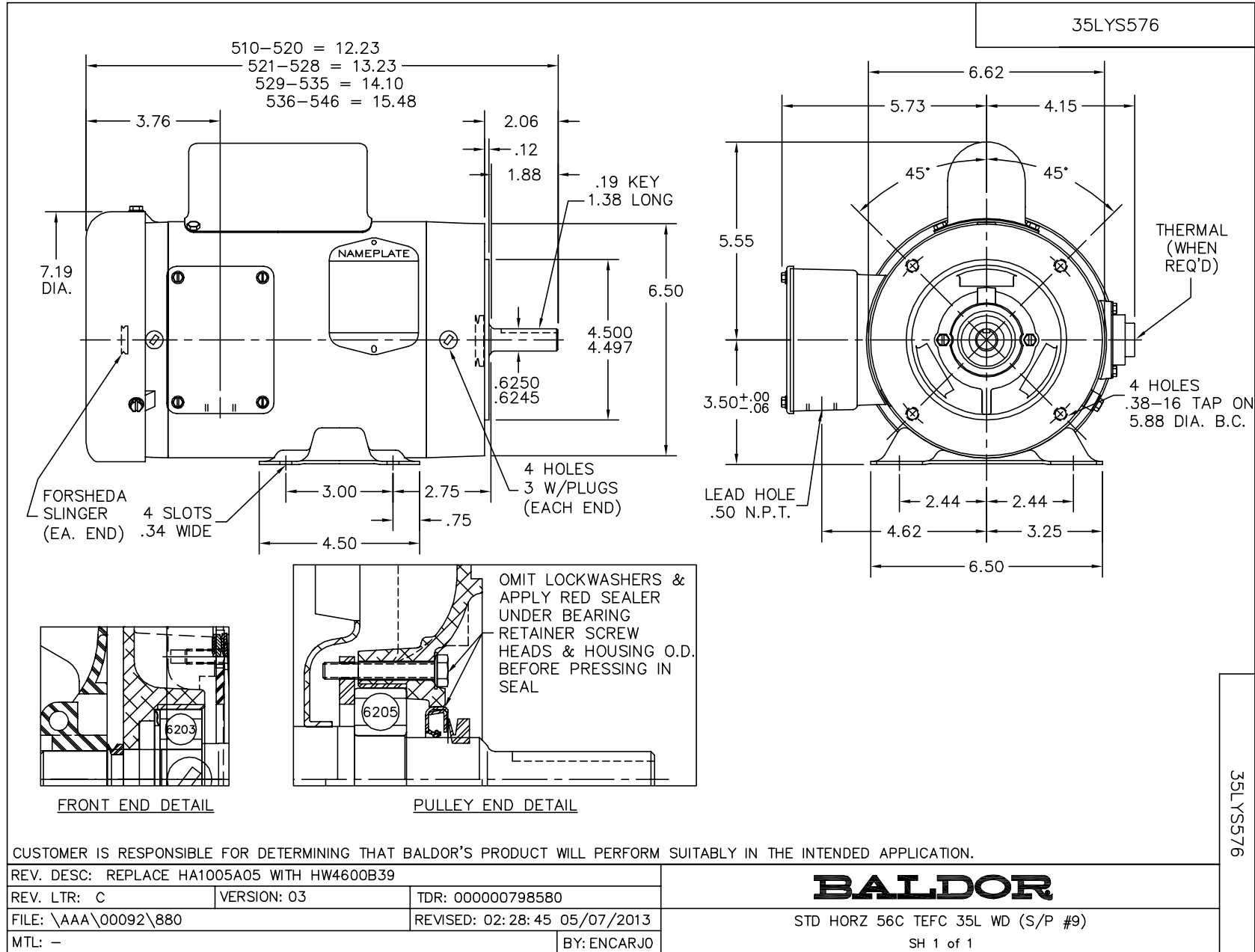
Load Characteristics 230 V, 60 Hz, 0.75 HP

% of Rated Load	25	50	75	100	125	150	S.F.
Power Factor	33	47	59	67	75	82	75
Efficiency	47.4	62	68	69.7	69.6	59.7	69.6
Speed	1784	1773	1760	1746	1730	1699	1730
Line amperes	3.9	4.2	4.6	5.1	5.8	7.3	5.8

Performance Graph at 230V, 60Hz, 0.75HP Typical performance - Not guaranteed values



11/14/2017 ACPERF: record # 20602



CD0001



NOTES:

1. STANDARD ROTATION IS CCW FACING END OPPOSITE SHAFT EXTENSION.
2. OPTIONAL THERMOSTAT IS PROVIDED WHEN SPECIFIED.
3. MULTIPLE CAPACITORS ARE CONNECTED IN PARALLEL UNLESS OTHERWISE SPECIFIED.
4. LEAD COLORS ARE OPTIONAL. LEADS MUST ALWAYS BE NUMBERED AS SHOWN.

CD0001

REV. DESC: REVISE TO SHOW OPTIONAL COLORS			
REV. LTR: D	BY: JLP	REVISED: 04/08/99 1:16	TDR: 0178636
100000		FILE: AAA00007405	MDL: -
		MTL: -	

BALDOR ELECTRIC Co.

TYPE L, DV, REV, 6 LEADS