

# **BALDOR® • RELIANCE**

## **Product Information Packet**

# **GPP233112**

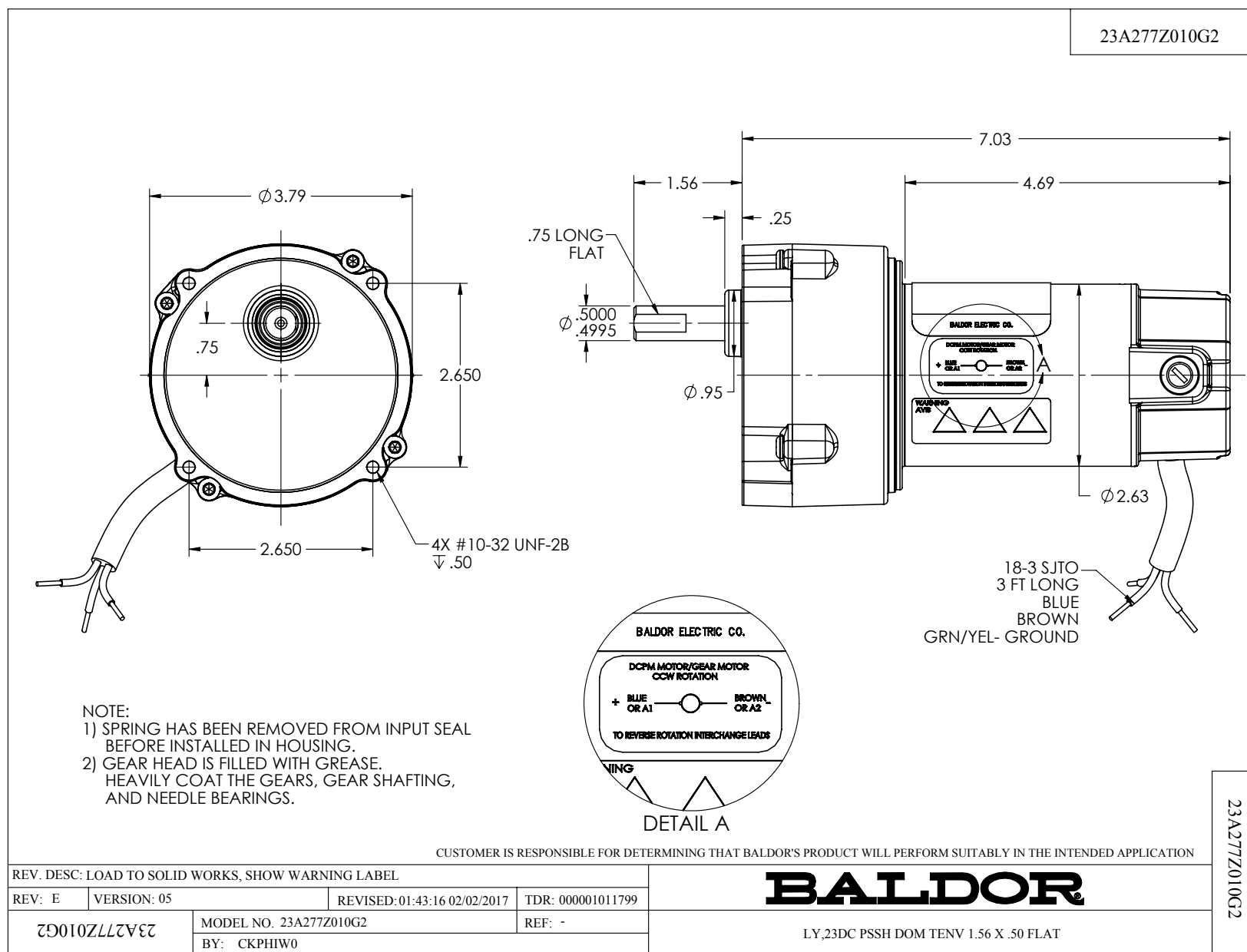
**.05HP,DC,PSSH-0,2318P,TENV,GM**

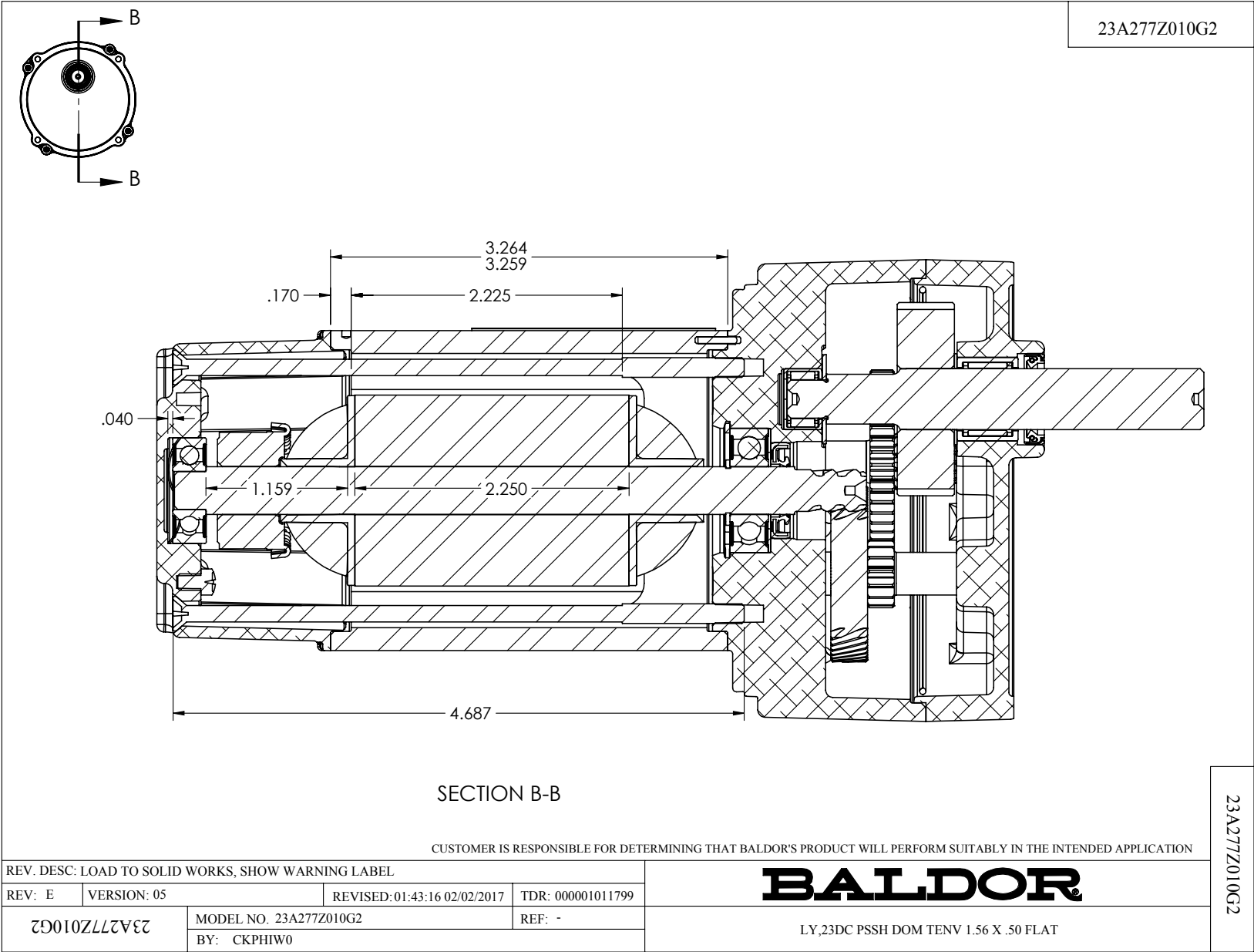
Part Detail							
Revision:	AB	Status:	PRD/A	Change #:		Proprietary:	No
Type:	DC	Prod. Type:	2318P	Elec. Spec:	23WGZ010	CD Diagram:	CD1899
Enclosure:	TENV	Mfg Plant:		Mech. Spec:		Layout:	23A277Z010G2
Frame:		Mounting:		Poles:	00	Created Date:	
Base:		Rotation:	R	Insulation:	F	Eff. Date:	09-22-2017
Field Type:		Literature:		Elec. Diagram:		Replaced By:	

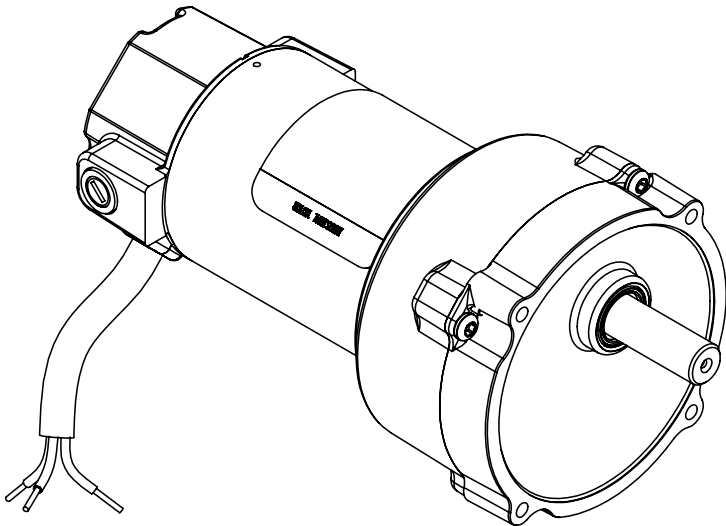
Specs			
Enclosure:	TENV		
Gearhead Type:	PARALLEL SHAFT		
Gear Ratio:	60:1		
Gear Style:	PSSH		
Mounting Arrangement:	0.000		
Product Family:	General Purpose		

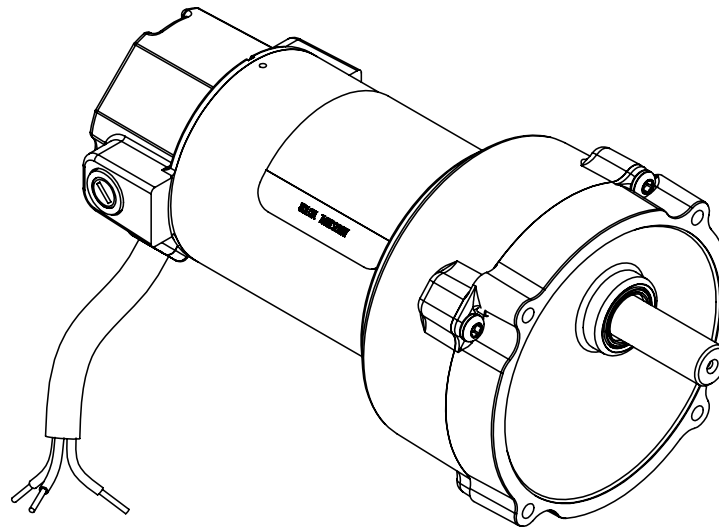
## Nameplate NP1220A08

CAT.NO.	GPP233112		
SER.NO			
SPEC.	23A277Z010G2		
FRAME	PSSH	TYPE	2318P
HP	.05 IP43 TE		
VOLTS	90DC		
AMP	.70		
F.F.	1.4	CLASS	F
AMB.	40	DUTY	CONT
BRUSHES	2/BP5060DA02		
R.P.M.	30		
TORQ/IN LB	100		
RATIO	60:1		
APRV-CE		APRV-CUL	





ITEM NO. PART NUMBER QTY.			ITEM NO. PART NUMBER QTY.			23A277Z010G2
1	HG0045A10	1	31	HW4600C29	1	
2	BMH1729	1	32	60XM0832A08	4	
3	BG6000C03	1	33	NP1220A08	1	
4	HW5002A42	1	34	LC0899A08	1	
5	HW3064E05	1	35	LB1451	1	
6	BH1163A01	1				
7	HW4600D28-01	1				
8	23SH4001C01	1				
9	HW5060A23	1				
10	23AA2018	1				
11	BG6608E03	1				
12	HW3022A04	1				
13	23SB3000C14	1				
14	PM1036A03	2				
15	23EP3108A01	1				
16	HW5109A06	1				
17	55XT0632G03	1				
18	BP4517	2				
19	BP5060-02	2				
20	80XN0632J03	2				
21	BP4515	2				
22	WD4102A01	1				
23	LD0110A29	1				
24	HA3170A10	2				
25	SG0047A63	1				
26	SG0047A64	1				
27	SG0047A48	1				
28	CG0001A01	1				
29	RM1020A21	1				
30	BH1163A02	1				
REV. DESC: LOAD TO SOLID WORKS, SHOW WARNING LABEL			CUSTOMER IS RESPONSIBLE FOR DETERMINING THAT BALDOR'S PRODUCT WILL PERFORM SUITABLY IN THE INTENDED APPLICATION			23A277Z010G2
REV: E	VERSION: 05	REVISED: 01:43:16 02/02/2017	TDR: 000001011799			
23A277Z010G2		MODEL NO. 23A277Z010G2	REF: -			
		BY: CKPHIW0	LY,23DC PSSH DOM TENV 1.56 X .50 FLAT			

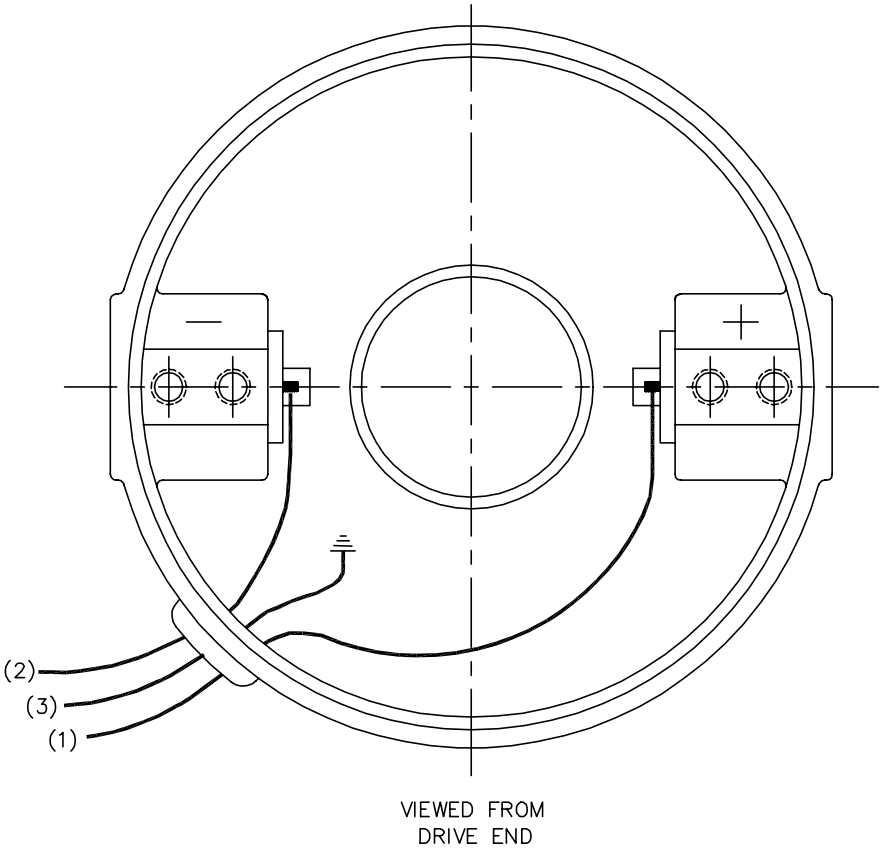


CD1899

(1) COLOR MAY BE  
RED  
WHT  
BLU

(2) COLOR MAY BE  
BLK  
BRN

(3) COLOR WHEN REQ.  
GRN  
GRN/YEL



VIEWED FROM  
DRIVE END

CD1899

REV. DESC: NEW			
REV. LTR: -	BY: PAW	REVISED: 09:06:34 09/16/2004	TDR: 341564
668100		FILE: CKA00025830	REF: CD1899
		MTL: -	

BALDOR ELECTRIC Co.

PM,2LD,REV,TANG,CK