

# **BALDOR**® • *RELIANCE*

## Product Information Packet

# CWDM3543

.75HP, 1160RPM, 3PH, 60HZ, 56C, 3530M, TENV, F1

Part Detail							
Revision:	K	Status:	PRD/A	Change #:		Proprietary:	No
Type:	AC	Elec. Spec:	35WGN470	CD Diagram:	CD0005	Mfg Plant:	
Mech. Spec:	35S588	Layout:	35LYS588	Poles:	06	Created Date:	09-17-2012
Base:	RG	Eff. Date:	12-19-2016	Leads:	9#18		

Specs			
Catalog Number:	CWDM3543	Heater Indicator:	No Heater
Enclosure:	TENV	Insulation Class:	F
Frame:	56C	Inverter Code:	Not Inverter
Frame Material:	Steel	KVA Code:	L
Output @ Frequency:	.750 HP @ 60 HZ	Lifting Lugs:	No Lifting Lugs
Synchronous Speed @ Frequency:	1200 RPM @ 60 HZ	Locked Bearing Indicator:	Locked Bearing
Voltage @ Frequency:	208.0 V @ 60 HZ	Motor Lead Quantity/Wire Size:	9 @ 18 AWG
	230.0 V @ 60 HZ	Motor Lead Exit:	Ko Box
	460.0 V @ 60 HZ	Motor Lead Termination:	Flying Leads
XP Class and Group:	None	Motor Type:	3530M
XP Division:	Not Applicable	Mounting Arrangement:	F1
Agency Approvals:	UR	Power Factor:	62
	CSA	Product Family:	Wash Down
Auxillary Box:	No Auxillary Box	Pulley End Bearing Type:	Sealed Bearing
Auxillary Box Lead Termination:	None	Pulley Face Code:	C-Face
Base Indicator:	Rigid	Pulley Shaft Indicator:	Standard
Bearing Grease Type:	Polyrex EM (-20F +300F)	Rodent Screen:	None
Blower:	None	Shaft Extension Location:	Pulley End

<b>Current @ Voltage:</b>	1.400 A @ 460.0 V	<b>Shaft Ground Indicator:</b>	No Shaft Grounding
	2.800 A @ 208.0 V	<b>Shaft Rotation:</b>	Reversible
	2.800 A @ 230.0 V	<b>Shaft Slinger Indicator:</b>	Shaft Slinger
<b>Design Code:</b>	B	<b>Speed Code:</b>	Single Speed
<b>Drip Cover:</b>	No Drip Cover	<b>Motor Standards:</b>	NEMA
<b>Duty Rating:</b>	CONT	<b>Starting Method:</b>	Direct on line
<b>Electrically Isolated Bearing:</b>	Not Electrically Isolated	<b>Thermal Device - Bearing:</b>	None
<b>Feedback Device:</b>	NO FEEDBACK	<b>Thermal Device - Winding:</b>	None
<b>Front Face Code:</b>	Standard	<b>Vibration Sensor Indicator:</b>	No Vibration Sensor
<b>Front Shaft Indicator:</b>	None	<b>Winding Thermal 1:</b>	None
		<b>Winding Thermal 2:</b>	None

Nameplate NP1496L										
CAT.NO.	CWDM3543									
SPEC.	35S588N470G2									
HP	.75									
VOLTS	208-230/460									
AMP	2.8/1.4									
RPM	1160									
FRAME	56C				HZ	60			PH	3
SER.F.	1.15		CODE	L	DES	B		CLASS	F	
NEMA-NOM-EFF	80		PF	62						
RATING	40C AMB-CONT									
CC									USABLE AT 208V	
DE	6205				ODE	6203				
ENCL	TENV		SN							

**AC Induction Motor Performance Data**

Record # 39805 - Typical performance - not guaranteed values

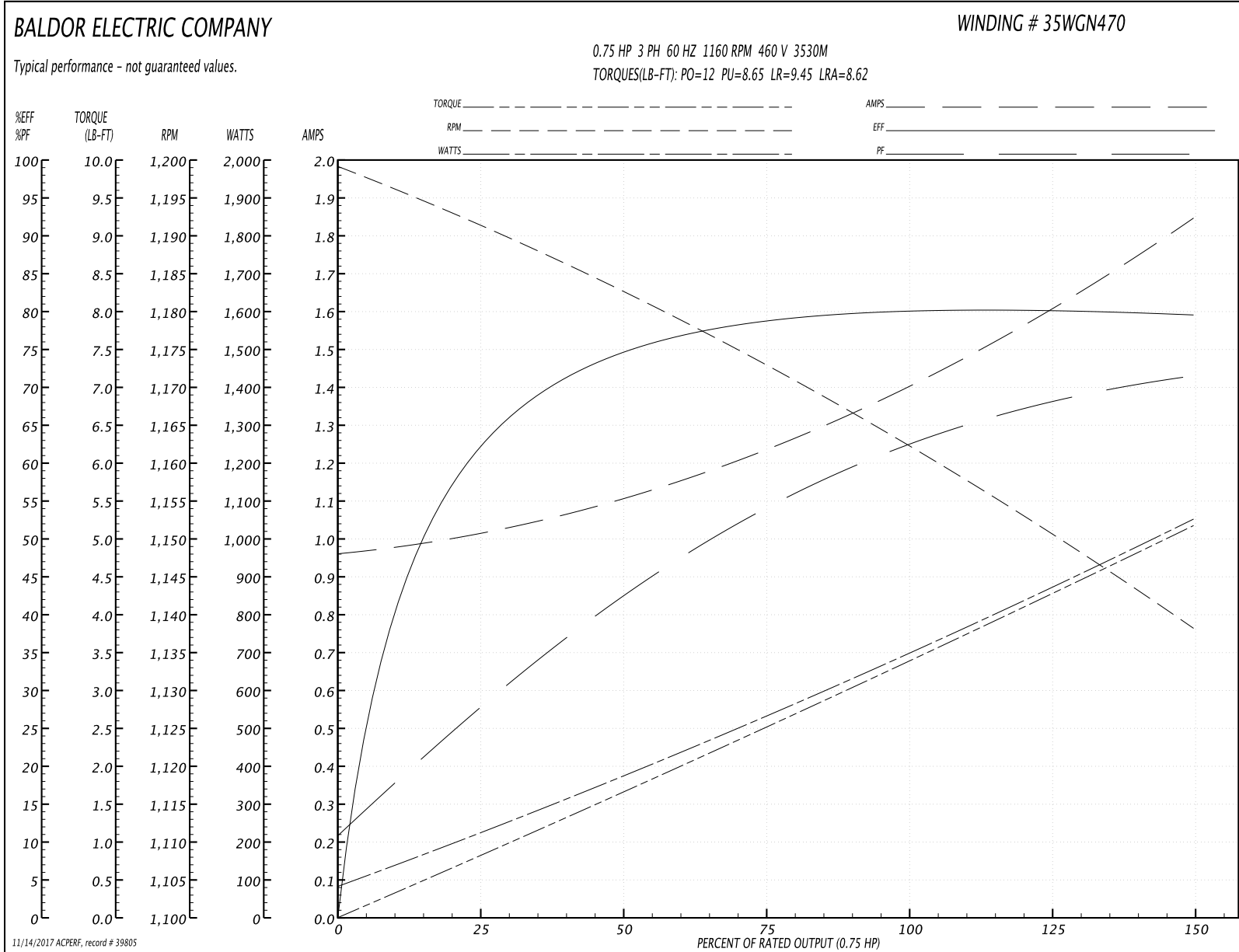
<b>Winding:</b> 35WGN470-R002	<b>Type:</b> 3530M	<b>Enclosure:</b> TENV
-------------------------------	--------------------	------------------------

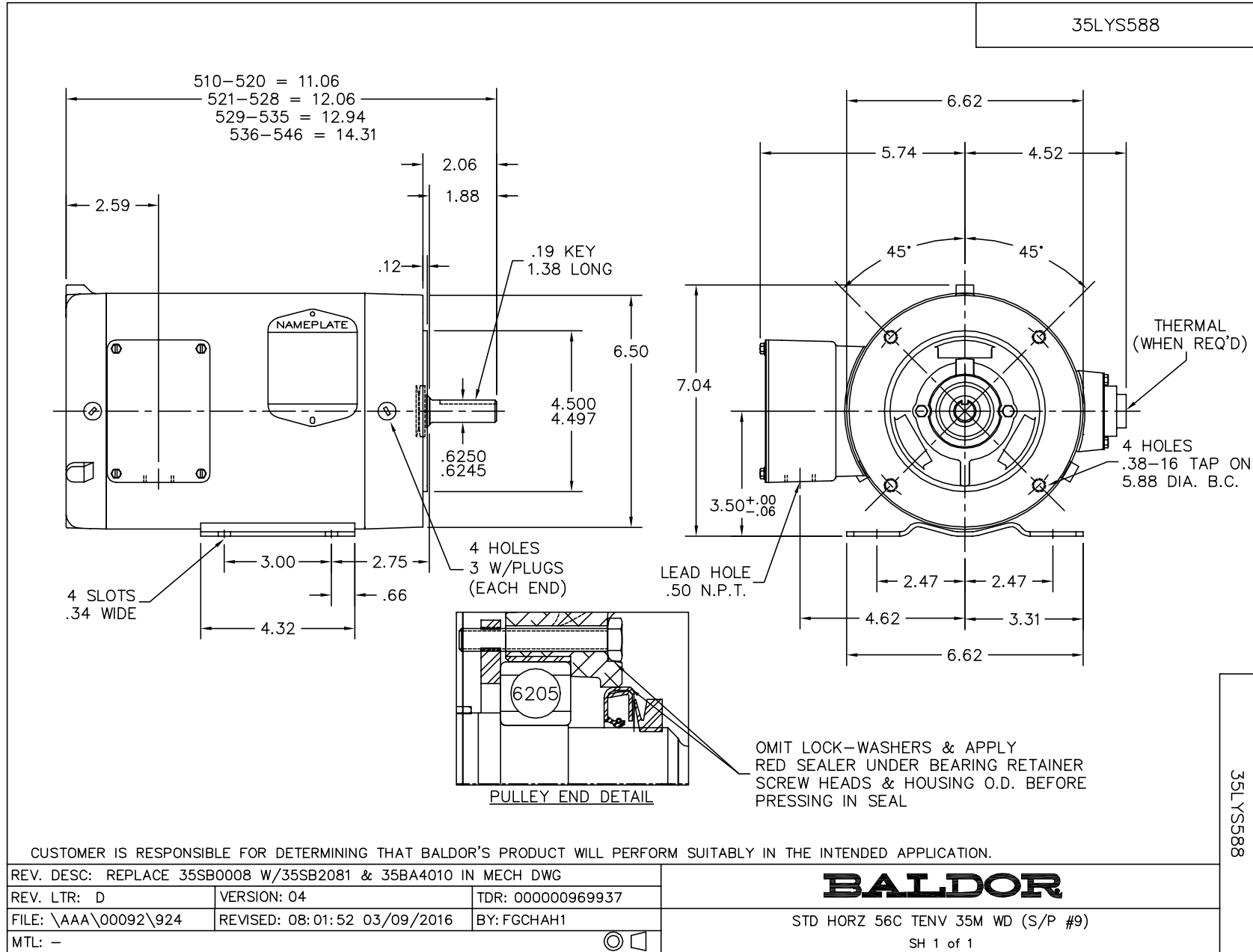
Nameplate Data				460 V, 60 Hz: High Voltage Connection	
Rated Output (HP)	.75			Full Load Torque	3.35 LB-FT
Volts	208-230/460			Start Configuration	direct on line
Full Load Amps	2.8/1.4			Breakdown Torque	12 LB-FT
R.P.M.	1160			Pull-up Torque	8.65 LB-FT
Hz	60	Phase	3	Locked-rotor Torque	9.45 LB-FT
NEMA Design Code	B	KVA Code	L	Starting Current	8.62 A
Service Factor (S.F.)	1.15			No-load Current	0.965 A
NEMA Nom. Eff.	80	Power Factor	62	Line-line Res. @ 25°C	17.851 Ω
Rating - Duty	40C AMB-CONT			Temp. Rise @ Rated Load	55°C
S.F. Amps				Temp. Rise @ S.F. Load	63°C
				Locked-rotor Power Factor	40
				Rotor inertia	0.178 LB-FT <sup>2</sup>

Load Characteristics 460 V, 60 Hz, 0.75 HP

% of Rated Load	25	50	75	100	125	150	S.F.
Power Factor	28	43	54	62	68	72	66
Efficiency	61.3	74.3	78.8	80.2	80.3	79.5	80.3
Speed	1191.2	1182.6	1173.2	1162.8	1151.4	1137.9	1156
Line amperes	1.01	1.1	1.23	1.4	1.61	1.84	1.53

Performance Graph at 460V, 60Hz, 0.75HP Typical performance - Not guaranteed values





CD0005



LOW VOLTAGE  
(2Y)



LINE

HIGH VOLTAGE  
(1Y)



LINE

NOTES:

1. INTERCHANGE ANY TWO LINE LEADS TO REVERSE ROTATION.
2. OPTIONAL THERMOSTATS ARE PROVIDED WHEN SPECIFIED.
3. ACTUAL NUMBER OF INTERNAL PARALLEL CIRCUITS MAY BE A MULTIPLE OF THOSE SHOWN ABOVE.
4. LEAD COLORS ARE OPTIONAL. LEADS MUST ALWAYS BE NUMBERED AS SHOWN.

REV. DESC: REVISE TO SHOW OPTIONAL COLORS			
REV. LTR: E	BY: JLP	REVISED: 01/19/99 10:15	TDR: 0171435
90000		FILE: AAA00005140	MDL: -
		MTL: -	

**BALDOR ELECTRIC Co.**

3PH, DV, 9 LEADS

CD0005