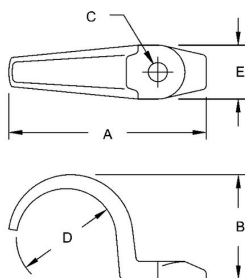


**RIGID ONE HOLE STRAPS - MALLEABLE IRON****One Hole Straps Malleable Iron**
N/A**B45**

Catalog #: 1312

APPLICATIONS

For use in mounting EMT conduit in wet or dry locations.

N/A

For use in mounting rigid/IMC conduit in wet or dry locations

RACO Rigid/IMC conduit straps are suitable for use on liquidtight flexible metal conduit and liquidtight flexible nonmetallic conduit (type B)

PRODUCT FEATURES

All malleable iron construction insures mechanical protection for the raceway

Oversized bolt holes make alignment of the fastener quick and easy

All straps are zinc electro plated for corrosion protection

GENERAL PRODUCT INFORMATION

Trade Size: 3 in.

DRAWING DIMENSIONS

Dimension A: 6-39/64 in.

Dimension B: 3-25/32 in.

Dimension C: 9/16 in.

Dimension D: 3-1/2 in.

Dimension E: 1-31/64 in.

PACKAGING

Package Type: Carton

Ship Carton Qty.: 10

Product UPC-A Labeled: No

Weight (Lbs. Per/C): 114.00

Ship Carton Length (in.): 9.20

Ship Carton Width (in.): 8.70

Ship Carton Height (in.): 6.00

Ctn Weight (Lbs.): 11.40

UPC Number: 050169013120

I2of5: 50050169013125