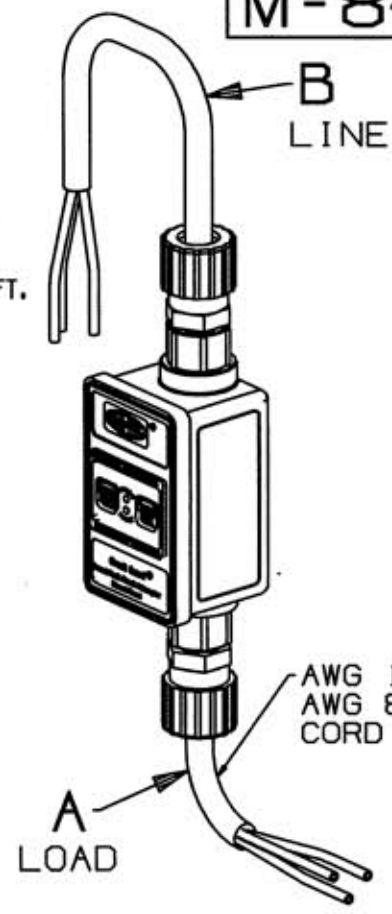


(2) HUBBELL SHC1036CR (3/4") CORD RANGE 1/2" TO 5/8" FOR UNITS WITH 50FT. OR LESS
(2) HUBBELL SHC 1038CR (3/4") CORD RANGE .75-.88 FOR UNITS WITH MORE THAN 50 FT. OF CORD.

M-8492



AWG 10-3 SJEOW OR SJE00W 105°C CORD FOR 50 FT. OR LESS.
AWG 8-3 SE00W OR SEOW 105°C CORD FOR MORE THAN 50 FT. CORD LENGTH.

ITEM	HUBBELL CATALOG NO.	VOLTAGE		AMP	WATTS	POWER-UP	LINE B CORD LENGTH	LOAD A CORD LENGTH
		120V	240V					
1	GFP1301	YES		30A	3600	MANUAL	1 FOOT	2 FEET
2	GFP1305	YES		30A	3600	MANUAL	1 FOOT	6 FEET
3	GFP1302	YES		30A	3600	MANUAL	1 FOOT	25 FEET
4	GFP1303	YES		30A	3600	MANUAL	1 FOOT	50 FEET
5	GFP1304	YES		30A	3600	MANUAL	1 FOOT	100 FEET
6	GFP2301		YES	30A	7200	MANUAL	1 FOOT	2 FEET
7	GFP2305		YES	30A	7200	MANUAL	1 FOOT	6 FEET
8	GFP2302		YES	30A	7200	MANUAL	1 FOOT	25 FEET
9	GFP2303		YES	30A	7200	MANUAL	1 FOOT	50 FEET
10	GFP2304		YES	30A	7200	MANUAL	1 FOOT	100 FEET
11	GFP1311	YES		30A	3600	AUTO	1 FOOT	2 FEET
12	GFP1315	YES		30A	3600	AUTO	1 FOOT	6 FEET
13	GFP1312	YES		30A	3600	AUTO	1 FOOT	25 FEET
14	GFP1313	YES		30A	3600	AUTO	1 FOOT	50 FEET
15	GFP1314	YES		30A	3600	AUTO	1 FOOT	100 FEET
16	GFP2311		YES	30A	7200	AUTO	1 FOOT	2 FEET
17	GFP2315		YES	30A	7200	AUTO	1 FOOT	6 FEET
18	GFP2312		YES	30A	7200	AUTO	1 FOOT	25 FEET
19	GFP2313		YES	30A	7200	AUTO	1 FOOT	50 FEET
20	GFP2314		YES	30A	7200	AUTO	1 FOOT	100 FEET

DESCRIPTION	MATERIAL	FINISH

SYM	REVISIONS	APP	DATE
2	REMOVED "N" FROM CATS. PER DCN. 8670-1 T.J.V. 9-12-01 SM.		
1	RELEASE FOR PRODUCTION DCNB670 GPK / SM 6/25/01		

THE DESIGN AND DIMENSIONS OF THE PRODUCT SHOWN ON THIS DRAWING ARE SUBJECT TO CHANGE WITHOUT NOTICE

TOLERANCES UNLESS OTHERWISE SPECIFIED		WIRING DEVICE-KELLEMS HUBBELL INCORPORATED BRIDGEPORT, CT	
FRACTIONS	± 1/64	DR. BY	GPK
DECIMALS	± .005	TR. BY	SCALE .5" = 1"
ANGLES	± 2°	CHK'D BY	SM
		APP. BY	DATE 5/22/01

DIMENSION SHEET FOR CAT. NO. **M-8492**
 REPAIRABLE NON-REPAIRABLE