

BALDOR® • RELIANCE

Product Information Packet

FDL3619TM

3HP,1725RPM,1PH,60HZ,184T,3634LC,TEFC,F1

Part Detail							
Revision:	G	Status:	PRD/A	Change #:		Proprietary:	No
Type:	AC	Elec. Spec:	36GW835	CD Diagram:	CD0002A02	Mfg Plant:	
Mech. Spec:	36Q165	Layout:	36LYQ165	Poles:	04	Created Date:	12-12-2013
Base:	RG	Eff. Date:	09-10-2015	Leads:	2#14 A PH,3#16 B&J		

Specs			
Catalog Number:	FDL3619TM	KVA Code:	H
Enclosure:	TEFC	Lifting Lugs:	No Lifting Lugs
Frame:	184T	Locked Bearing Indicator:	No Locked Bearing
Frame Material:	Steel	Motor Lead Quantity/Wire Size:	2 @ 14 AWG, A PH
Output @ Frequency:	3.000 HP @ 60 HZ	Motor Lead Exit:	Ko Box
Synchronous Speed @ Frequency:	1800 RPM @ 60 HZ	Motor Lead Termination:	Flying Leads
Voltage @ Frequency:	230.0 V @ 60 HZ	Motor Type:	3634LC
XP Class and Group:	None	Mounting Arrangement:	F1
XP Division:	Not Applicable	Power Factor:	90
Agency Approvals:	UR	Product Family:	General Purpose
	CSA	Product Type:	FARM DUTY
Auxillary Box:	No Auxillary Box	Pulley End Bearing Type:	Sealed Bearing
Auxillary Box Lead Termination:	None	Pulley Face Code:	Standard
Base Indicator:	Rigid	Pulley Shaft Indicator:	Standard
Bearing Grease Type:	Polyrex EM (-20F +300F)	Rodent Screen:	None
Blower:	None	Shaft Extension Location:	Pulley End
Current @ Voltage:	13.200 A @ 230.0 V	Shaft Ground Indicator:	No Shaft Grounding
Design Code:	L	Shaft Rotation:	Reversible

Drip Cover:	No Drip Cover	Shaft Slinger Indicator:	Shaft Slinger
Duty Rating:	CONT	Speed Code:	Single Speed
Electrically Isolated Bearing:	Not Electrically Isolated	Motor Standards:	NEMA
Feedback Device:	NO FEEDBACK	Starting Method:	Direct on line
Front Face Code:	Standard	Thermal Device - Bearing:	None
Front Shaft Indicator:	None	Thermal Device - Winding:	None
Heater Indicator:	No Heater	Vibration Sensor Indicator:	No Vibration Sensor
Insulation Class:	F	Winding Thermal 1:	Manual Thermal Overload
Inverter Code:	Not Inverter	Winding Thermal 1 Location:	KO
		Winding Thermal 2:	None

Nameplate NP1280L

CAT.NO.	FDL3619TM									
SPEC.	36Q165W835G1									
HP	3									
VOLTS	230									
AMP	13.2									
RPM	1725									
FRAME	184T				HZ	60		PH	1	
SER.F.	1.00				CODE	H		DES	L	
NEMA-NOM-EFF	81.5				PF	90		CL	F	
RATING	40C AMB-CONT									
CC					USABLE AT 208V					
DE	6206				ODE	6205				
ENCL	TEFC				SN					

AC Induction Motor Performance Data

Record # 10851 - Typical performance - not guaranteed values

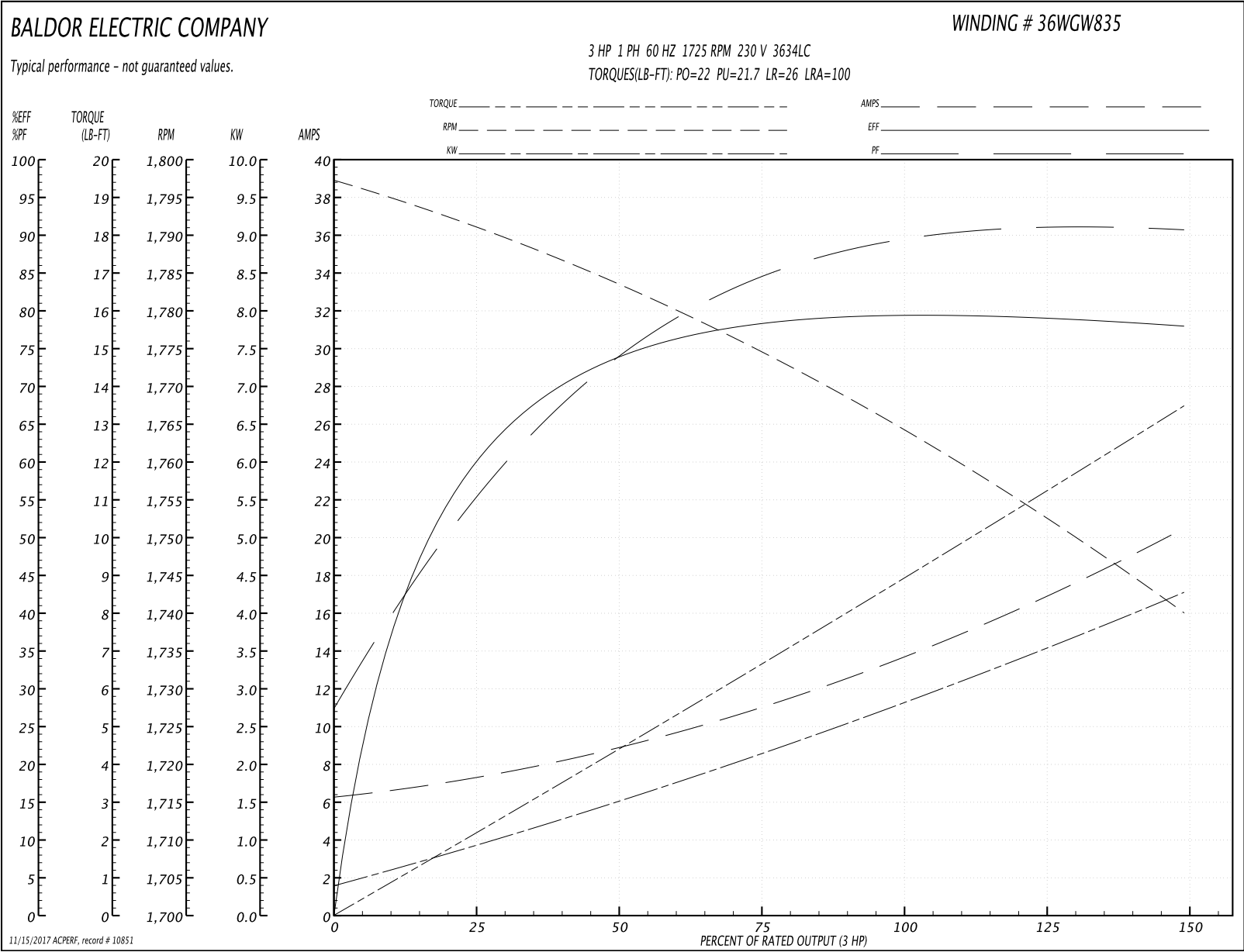
Winding: 36WGW835-R001	Type: 3634LC	Enclosure: TEFC
-------------------------------	---------------------	------------------------

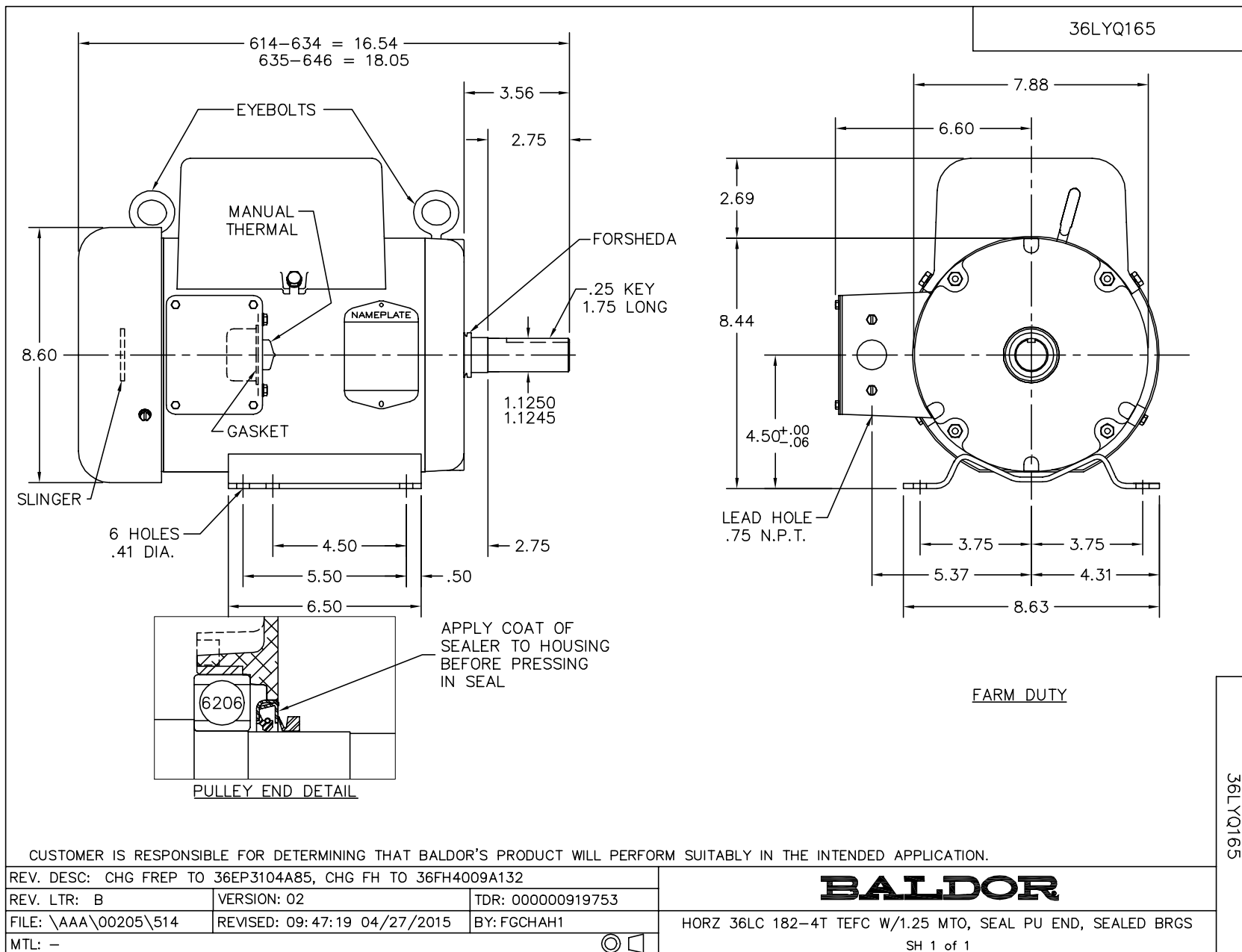
Nameplate Data				230 V, 60 Hz: Single Voltage Motor	
Rated Output (HP)	3			Full Load Torque	9 LB-FT
Volts	230			Start Configuration	direct on line
Full Load Amps	13.2			Breakdown Torque	22 LB-FT
R.P.M.	1725			Pull-up Torque	21.7 LB-FT
Hz	60	Phase	1	Locked-rotor Torque	26 LB-FT
NEMA Design Code	L	KVA Code	H	Starting Current	100 A
Service Factor (S.F.)	1			No-load Current	6.2 A
NEMA Nom. Eff.	81.5	Power Factor	90	Line-line Res. @ 25°C	0.698 Ω A Ph 1.342 Ω B Ph
Rating - Duty	40C AMB-CONT			Temp. Rise @ Rated Load	84°C

Load Characteristics 230 V, 60 Hz, 3 HP

% of Rated Load	25	50	75	100	125	150
Power Factor	66	82	84	89	90	92
Efficiency	61.5	75	76.2	79.7	80.3	77.4
Speed	1790	1783	1774	1764	1754	1739
Line amperes	7.8	8.1	11.6	13.9	16.8	20.5

Performance Graph at 230V, 60Hz, 3.0HP Typical performance - Not guaranteed values





CD0002A02

