

BALDOR® • *RELIANCE*

Product Information Packet

ECP4310T-4

60HP,3560RPM,3PH,60HZ,364TS,TEFC,FOOT

| Part Detail | | | | | | | |
|-------------|----|-------------|------------|-------------|------------|---------------|------------|
| Revision: | T | Status: | PRD/A | Change #: | | Proprietary: | No |
| Type: | AC | Elec. Spec: | A36WG0130 | CD Diagram: | 416820-036 | Mfg Plant: | |
| Mech. Spec: | | Layout: | 617428-036 | Poles: | 02 | Created Date: | 10-19-2010 |
| Base: | | Eff. Date: | 05-02-2017 | Leads: | 3#4 | | |

| Specs | | | |
|--------------------------------|-------------------------|--------------------------------|--------------------|
| Catalog Number: | ECP4310T-4 | Heater Indicator: | No Heater |
| Enclosure: | TEFC | Insulation Class: | F |
| Frame: | 364TS | Inverter Code: | Inverter Ready |
| Frame Material: | Iron | KVA Code: | F |
| Output @ Frequency: | 60.000 HP @ 60 HZ | Lifting Lugs: | No Lifting Lugs |
| Synchronous Speed @ Frequency: | 3600 RPM @ 60 HZ | Motor Lead Quantity/Wire Size: | 3 @ 4 AWG |
| Voltage @ Frequency: | 460.0 V @ 60 HZ | Motor Type: | A36056M |
| XP Class and Group: | None | Mounting Arrangement: | F1 |
| XP Division: | Division II | Power Factor: | 91 |
| Agency Approvals: | CSA EEV | Pulley End Bearing Type: | Ball |
| Auxillary Box: | No Auxillary Box | Pulley Face Code: | Standard |
| Base Indicator: | Rigid | Shaft Ground Indicator: | No Shaft Grounding |
| Bearing Grease Type: | Polyrex EM (-20F +300F) | Shaft Rotation: | Reversible |
| Constant Torque Speed Range: | 6-60 | Shaft Slinger Indicator: | No Slinger |
| Current @ Voltage: | 65.100 A @ 460.0 V | Speed Code: | Single Speed |
| Design Code: | B | Motor Standards: | NEMA |
| Drip Cover: | No Drip Cover | Starting Method: | Direct on line |
| Duty Rating: | CONT | Thermal Device - Bearing: | None |

| | | | |
|-------------------------|-------------|----------------------------------|------|
| Feedback Device: | NO FEEDBACK | Thermal Device - Winding: | None |
| | | XP Temp Code: | T3 |

| Nameplate NP3238 | | | | | | | | | |
|--------------------|------------|-----------------|---------|---------------|------|-----------------------|------|---------------------|------|
| CAT NO | ECP4310T-4 | SPEC NO. | P36G397 | | | | | | |
| HP | 60 | AMPS | 65.1 | VOLTS | 460 | DESIGN | B | | |
| FRAME | 364TS | RPM | 3560 | HZ | 60 | AMB | 40 | SF | 1.15 |
| D.E. BRG.DATA | 6313 | O.D.E. BRG.DATA | 6313 | PH | 3 | DUTY | CONT | INSUL.CLASS | F |
| D.E. BRG. | 65BC03J30X | TYPE | P | ENCL | TEFC | CODE | F | NEMA NOM EFFICIENCY | 95 |
| O.D.E. BRG. | 65BC03J30X | POWER FACTOR | 91 | MAX CORR KVAR | 5.0 | GUARANTEED EFFICIENCY | 94.5 | | |
| 3/4 LOAD EFF. | 95.4 | TEMP | = 200 | | | | | | |
| TEMP CODE | T3 | CT HZ | 6-60 | VT HZ | 0-60 | | | | |
| CHP HZ | 60-75 | | | | | | | | |
| INVERTER-TEMP-CODE | T3 | | | | | | | | |
| SER.NO. | | MOTOR WEIGHT | 882 | | | | | | |

| | | | | | | |
|-----------|-------------|-------------------|-----------|--|-------------|-------|
| REL. S.O. | FRAME | HP | TYPE | PHASE/HERTZ | RPM | VOLTS |
| | 364TS | 60 | P | 3/60 | 3560 | 460 |
| AMPS | DUTY | AMB °C/ INSUL. | S.F. | NEMA DESIGN | CODE LETTER | ENCL. |
| 65.1 | CONT | 40/F | 1.15 | B | F | TEFC |
| E/S | ROTOR | TEST S.O. | TEST DATE | STATOR RES. @25 °C (OHMS (BETWEEN LINES)) | | |
| 491282 | 418141005XE | --- | --- | .101 | | |

PERFORMANCE

| LOAD | HP | AMPERES | RPM | POWER FACTOR % | EFFICIENCY % |
|---------|------|---------|------|----------------|--------------|
| NO LOAD | 0 | 14.1 | 3600 | 6.54 | 0 |
| 1/4 | 15.0 | 20.8 | 3590 | 72.8 | 93.1 |
| 2/4 | 30.0 | 33.4 | 3580 | 88.2 | 95.3 |
| 3/4 | 45.0 | 48.6 | 3570 | 90.7 | 95.5 |
| 4/4 | 60.0 | 65.1 | 3559 | 90.7 | 95.1 |
| 5/4 | 75.0 | 82.2 | 3547 | 90.3 | 94.5 |

SPEED TORQUE

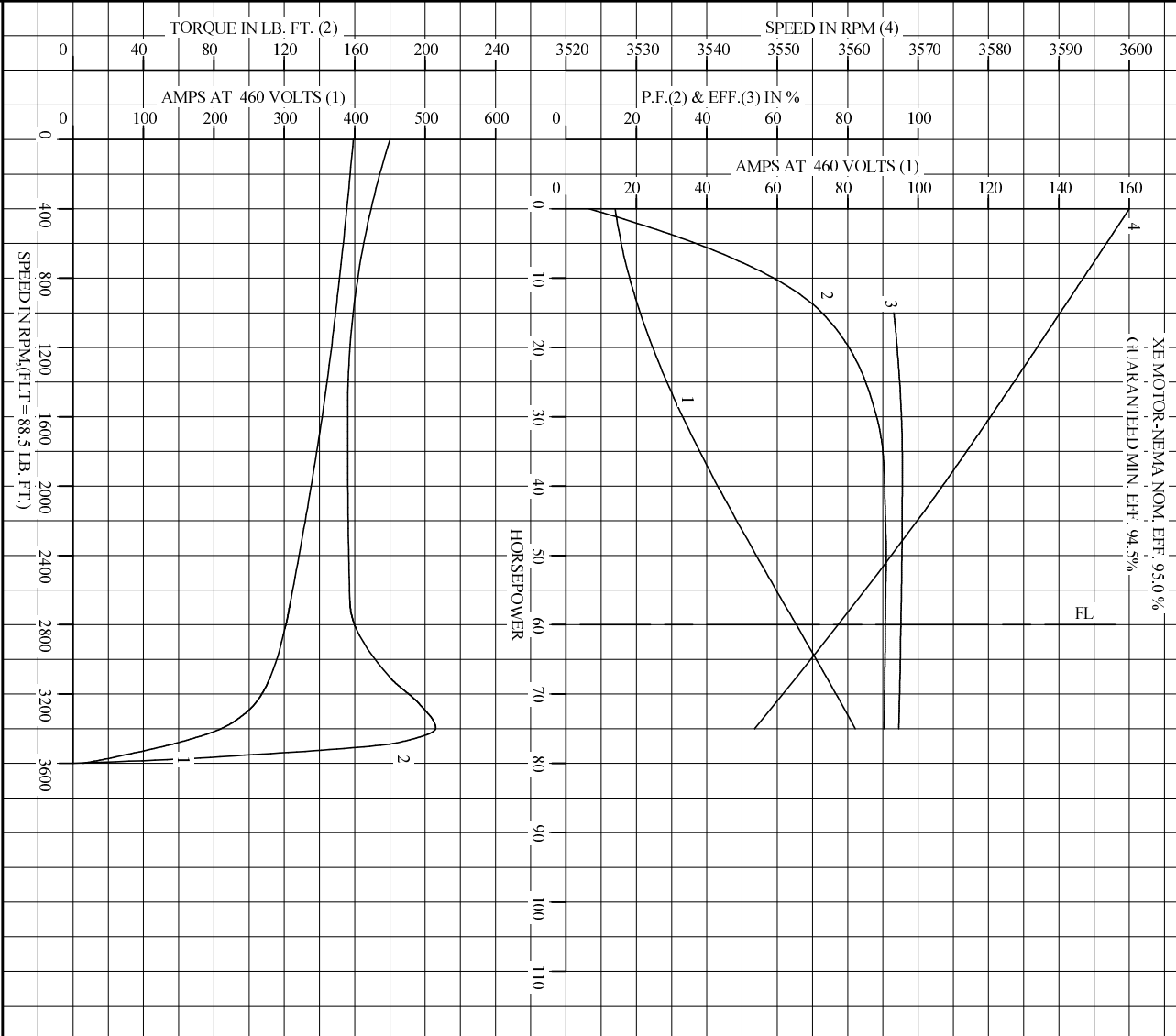
| | RPM | TORQUE % FULL LOAD | TORQUE LB.-FT. | AMPERES |
|--------------|------|--------------------|----------------|---------|
| LOCKED ROTOR | 0 | 203 | 180 | 398 |
| PULL UP | 1565 | 176 | 156 | 355 |
| BREAKDOWN | 3397 | 233 | 206 | 212 |
| FULL LOAD | 3559 | 100 | 88.5 | 65.1 |

AMPERES SHOWN FOR 460. VOLT CONNECTION. IF OTHER VOLTAGE CONNECTIONS ARE AVAILABLE, THE AMPERES WILL VARY INVERSELY WITH THE RATED VOLTAGE

REMARKS: TYPICAL DATA
 XE MOTOR-NEMA NOM. EFF. 95.0 %
 GUARANTEED MIN. EFF. 94.5 %

| | | |
|---------------|-----------------------|-------------------------|
| BALDOR | DR. BY G. R. WEBB | A-C MOTOR |
| | CK. BY J. J. HARRISON | |
| | APP. BY W. L. SMITH | PERFORMANCE DATA |
| | DATE 07/31/02 | ISSUE DATE 12/15/10 |

REL. S.O. _____ RPM 3560 S.F. 1.15 ROTOR 418141005XE
 FRAME 364TS VOLTS 460 NEMA DESIGN B TEST S.O. TYPICAL DATA
 HP 60 AMPS 65.1 CODE LETTER F TEST DATE ---
 TYPE P DUTY CONT ENCLOSURE TEFC STATOR RES. @ 25 °C .101
 PHASE/HERTZ 3/60 AMB °C/INSUL 40/F E/S 491282 OHMS (BETWEEN LINES)



AMPERES SHOWN FOR 460 VOLT CONNECTION, IF OTHER VOLTAGE CONNECTIONS ARE AVAILABLE, THE AMPERES WILL VARY INVERSELY WITH THE RATED VOLTAGE.

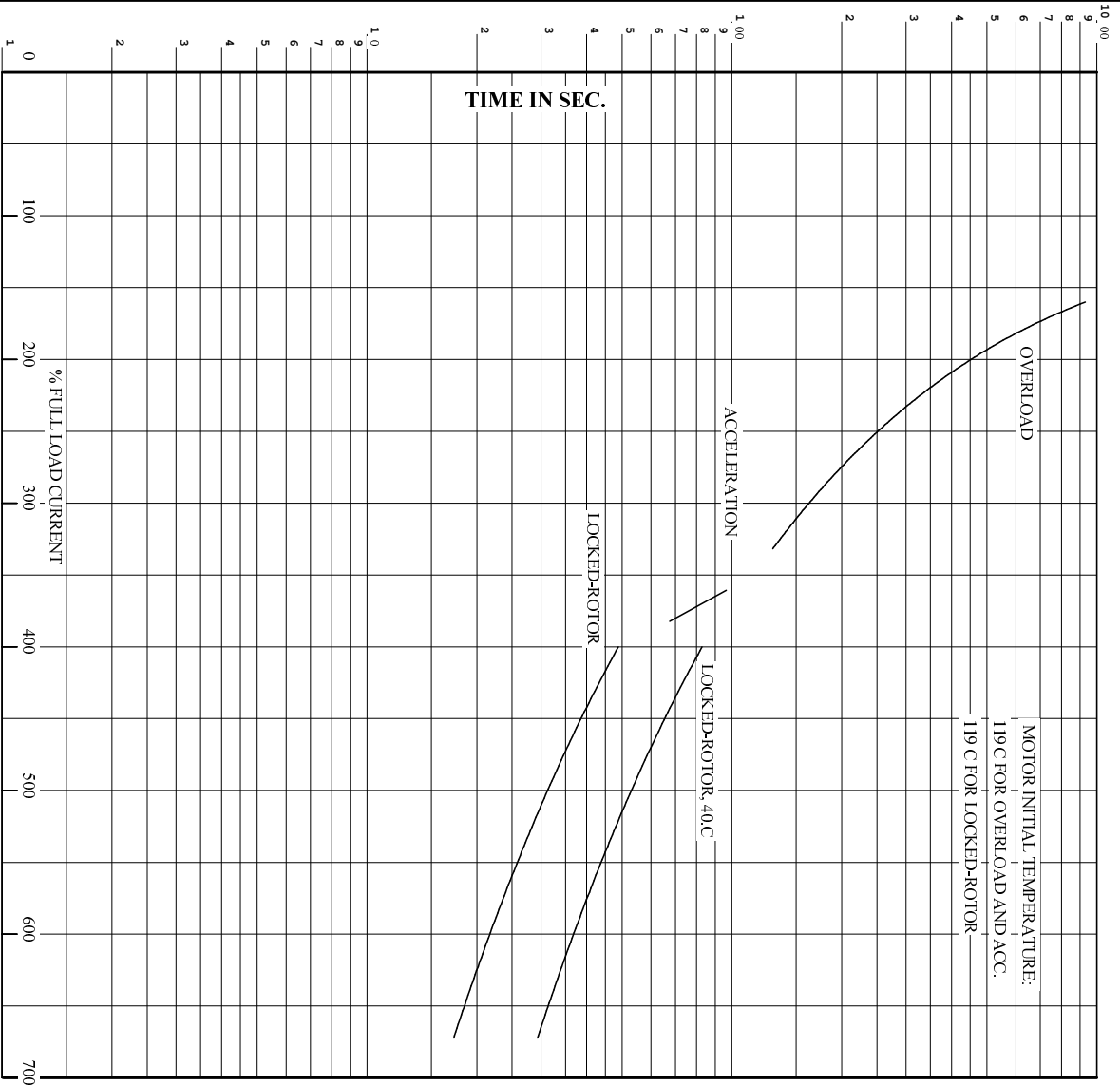


DR. BY G.R. WEBB
 CK. BY J.H. HARRISON
 App. BY W.L. SMITH
 DATE 07/31/02

A-C MOTOR PERFORMANCE CURVES
 A36WG0130-R002
 ISSUE DATE 12/15/10

Printed on 12/15/10 12:42 @ psecs-motorengr

REL. S.O. RPM 3560 S.F. 1.15 ROTOR 418141005XE
 FRAME 364TS VOLTS 460 NEMA DESIGN B TEST S.O. TYPICAL DATA
 HP 60 AMPS 65.1 CODE LETTER F TEST DATE ---
 TYPE P DUTY CONT ENCLOSURE TEFC STATOR RES. @ 25 C. 101
 PHASE/HERTZ 3/60 AMB C/INSUL 40/F E/S 491282 OHMS (BETWEEN LINES)



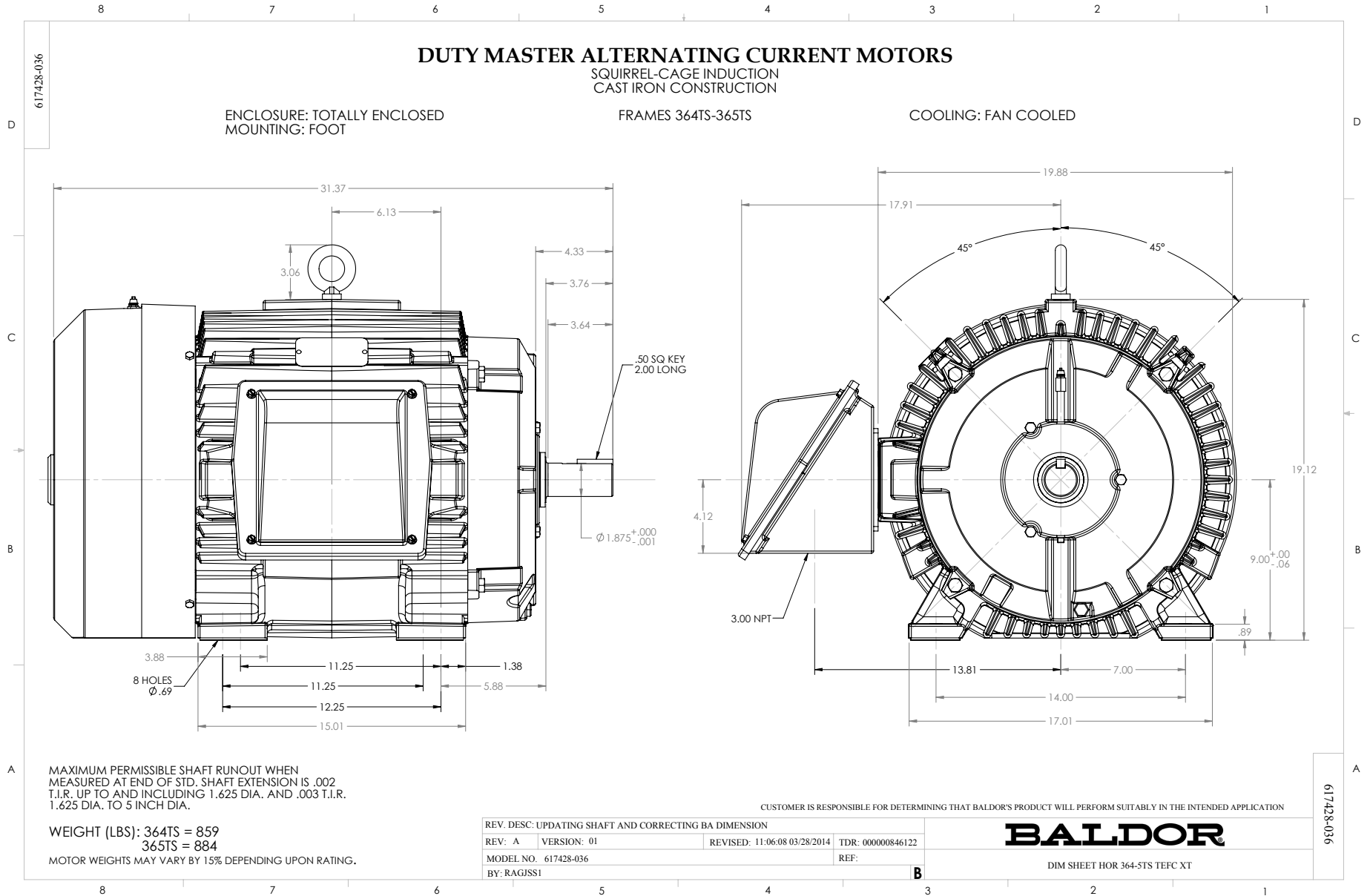
REMARKS: THERMAL LIMIT CURVE
 XE MOTOR-NEMA NOM. EFF. 95.0%
 GUARANTEED MIN. EFF. 94.5%

AMPERES SHOWN FOR 460 VOLT CONNECTION, IF OTHER VOLTAGE CONNECTIONS ARE AVAILABLE, THE AMPERES WILL VARY INVERSELY WITH THE RATED VOLTAGE.



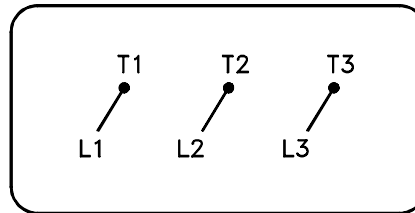
DR. BY G.R. WEBB
 CK. BY J.HARRISON
 App. BY W.L. SMITH
 DATE 07/31/02

A-C MOTOR
PERFORMANCE
CURVES
 A36WG0130-R002
 ISSUE DATE 12/15/10



416820-036

A-C MOTOR
 CONNECTION DIAGRAM
 STANDARD 3 LEAD CONNECTED



(N.P. 1575-BA)

416820-036

| | | |
|--------------------------------------|------------------------------|-------------------|
| REV. DESC: LOADED TO BUS, C/R 335225 | | |
| REV. LTR: - | VERSION: 00 | TDR: 000000538207 |
| FILE: \MGA\00000\682 | REVISED: 11:54:06 04/30/2010 | |
| MTL: - | BY: RAGRA | |

BALDOR

CONN DIAG - STANDARD 3 LEAD
 SH 1 of 1