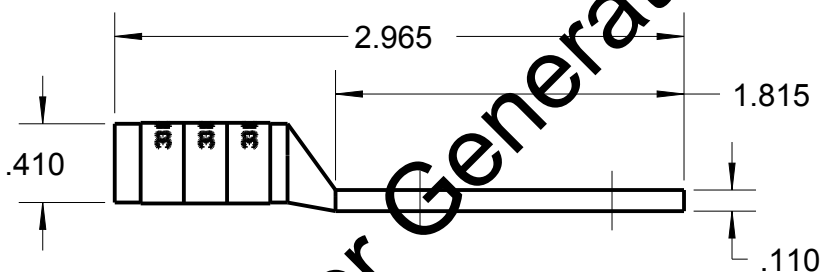
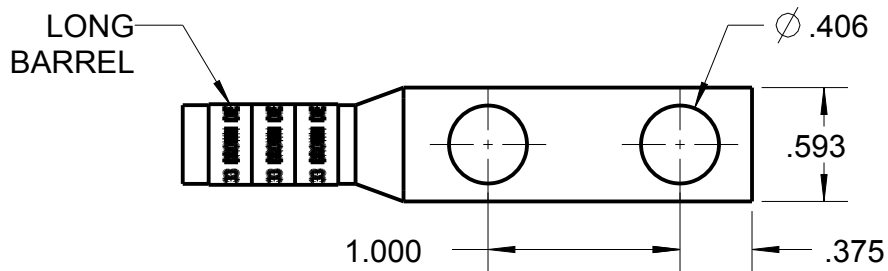


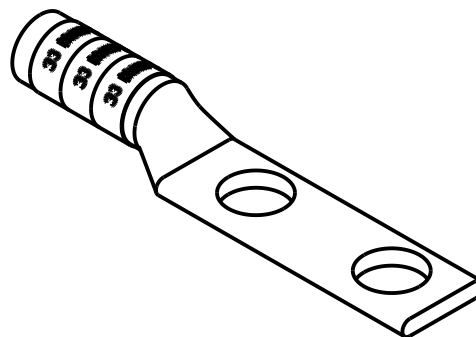
# Blackburn Compression

Featuring the Color-Keyed® System

CATALOG NO. 256-30695-1161



Configurator Generated



WIRE SIZE:      2        :   \*

MATERIAL: HIGH CONDUCTIVITY COPPER

FINISH: TIN PLATED

<b>GENERAL NOTES</b> 1. ALL DIMENSIONS ARE FOR REFERENCE ONLY. 2. DIMENSIONS IN BRACKETS [ ] ARE IN METRIC UNITS.				
<b>REVISIONS</b> ** SEE ERN (****) FOR APPROVAL SIGNATURES & RELEASE DATE. PROJECT NO: ****	DESCRIPTION: <span style="font-size: 1.2em; font-weight: bold;">2 HOLE LUG</span>			
ORIGINAL PROJECT NO / ( ERN NO )	SHEET NO:	REV. NO:	DRAWING NO: <input type="text"/> : <input type="text"/> 6 <input type="text"/> <input type="text"/> <input type="text"/> <input type="text"/> <input type="text"/> <input type="text"/> <input type="text"/> <input type="text"/> <input type="text"/> <input type="text"/> <input type="text"/> <input type="text"/> <input type="text"/> <input type="text"/> <input type="text"/> <input type="text"/> <input type="text"/> <input type="text"/> <input type="text"/> <input type="text"/>	
/ ( )	1 OF 1	<input type="text"/> <input type="text"/>	256-30695-1161	