

PR8

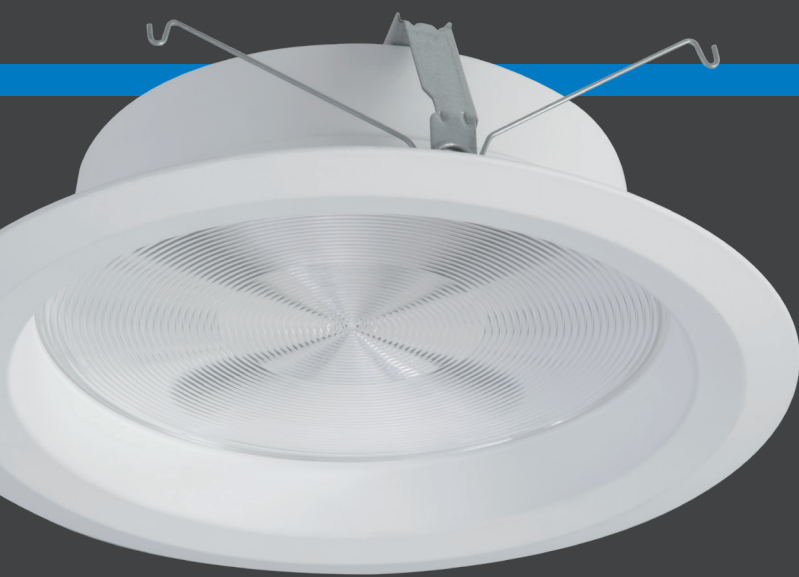
8" LED Fixture

HALO Commercial



EATON

Powering Business Worldwide

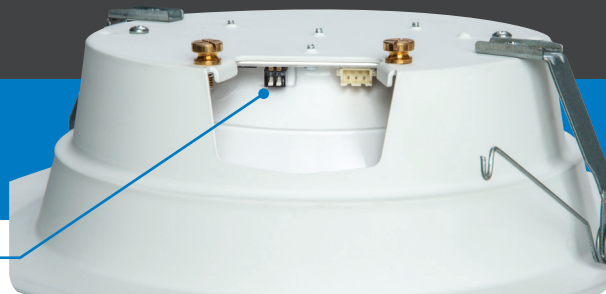


PR8

The PR8 family with seleCCTable™ technology puts flexibility at your fingertips. Select between 3000K, 3500K or 4000K color temperatures with the flip of a switch. Choose between the three housings, five lumen output levels, and three optical distribution options. The PR8 family offers uncommon flexibility in an 8" recessed downlight.

seleCCTable™

Change CCT with the flick of a switch.



two switches down



one switch up / one switch down



two switches up

Features

- Over 120 lm/w
- 0-10V dimming down to 1%
- Wet location
- Chicago Plenum
- Five year warranty
- 7W and 14W EM backup available
- Light output options:
 - 1000 lumens
 - 1500 lumens
 - 2000 lumens
 - 3000 lumens
 - 4000 lumens

Optical distributions

Field changeable optical distributions



Ordering Information

New construction/Remodel

Sample Number: PR840D010 + PR8M12MDMW = 8" frame, 4000 lumens, 120V-277V driver + PR8 LED module, medium distribution lens, matte white
A complete luminaire consists of a frame and LED module ordered separately.

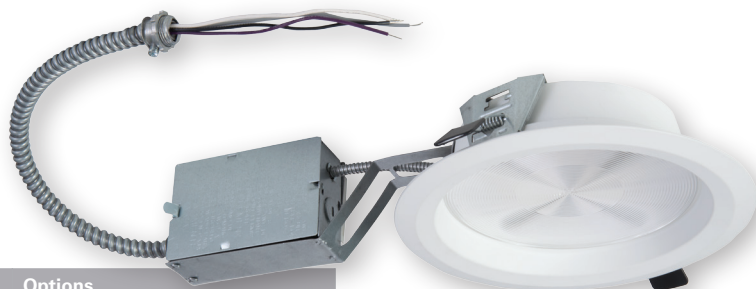
Frame	Lumens	Driver	Options
PR8 = 8" aperture LED downlight frame PR8CP = 8" aperture LED downlight frame, CCEA listed for City of Chicago plenum requirements	10 = 1,000 lumens (nominal) 15 = 1,500 lumens (nominal) 20 = 2,000 lumens (nominal) 30 = 3,000 lumens (nominal) 40 = 4,000 lumens (nominal)	D010 = 120-277V 50/60Hz, 0-10V 100% to 1% dimming	REM7 = 7W emergency battery pack with remote test switch and charge indicator light REM14 = 14W emergency battery pack with remote test switch and charge indicator light



Retrofit/International install from below ceiling

Sample Number: PR8R40D010 = 8" retrofit kit, 4000 lumens, 120V-277V driver
A complete luminaire consists of a retrofit kit and LED module ordered separately.

Frame	Lumens	Driver	Options
PR8R = 8" aperture LED downlight frame PR8RCP = 8" aperture LED downlight frame, CCEA listed for City of Chicago plenum requirements	10 = 1,000 lumens (nominal) 15 = 1,500 lumens (nominal) 20 = 2,000 lumens (nominal) 30 = 3,000 lumens (nominal) 40 = 4,000 lumens (nominal)	D010 = 120-277V 50/60Hz, 0-10V 100% to 1% dimming	REM7 = 7W emergency battery pack with remote test switch and charge indicator light REM14 = 14W emergency battery pack with remote test switch and charge indicator light



Surface mount

Sample Number: PR8S40D010MW = 8" surface mount cylinder, 4000 lumens, 120V-277V driver, matte white
A complete luminaire consists of a cylinder and LED module ordered separately.

Frame	Lumens	Driver	Finish
PR8S = 8" aperture LED downlight surface mount cylinder	10 = 1,000 lumens (nominal) 15 = 1,500 lumens (nominal) 20 = 2,000 lumens (nominal) 30 = 3,000 lumens (nominal) 40 = 4,000 lumens (nominal)	D010 = 120-277V 50/60Hz, 0-10V 100% to 1% dimming	MW = Matte White MB = Matte Black MMS = Matte Metallic Silver



LED module

Sample Number: PR8M12MDMW = 8" LED module, Medium distribution, Matte White
A complete luminaire consists of an LED module with either a frame, retrofit kit, or cylinder. Ordered separately.

seleCCTable™

LED Module	Shielding	Flange Finish	Accessories
PR8M12 = Downlight LED module for PR8 series, provides 1000, 1500 or 2000 lumens (nominal) depending on connected frame type PR8M34 = Downlight LED module for PR8 series, provides 3000 or 4000 lumens (nominal) depending on connected frame type	MD = Medium distribution plastic lens WD = Wide distribution plastic lens	MW = Matte White MB = Matte Black MMS = Matte Metallic Silver	HB128APK = L channel hanger bar, 26", "No-Fuss", pair (replacement) RMB22 = 22" long wood joist mounting bars, pair PR8VWV = Field installed wall wash optic for PR8M12 and PR8M34 modules PR8MD = Replacement 8" medium distribution lens for PR8M12 and PR8M34 modules PR8WD = Replacement 8" wide distribution lens for PR8M12 and PR8M34 modules PR8TC = Specular clear trim insert for PR8M12 and PR8M34 modules PR8TH = Semi-specular clear trim insert for PR8M12 and PR8M34 modules ABR10P = Oversize trim ring for max 10" ceiling opening - 11.3" flange PORLWTPD1 = LumaWatt Pro Wireless Sensor Kit (0-10V only)



**Our Lighting
Product Lines**

Halo
Halo Commercial
Portfolio
Iris
RSA
Metalux
Corelite
Neo-Ray
Fail-Safe
MWS
Ametrix
Shaper
io
Lumark
McGraw-Edison
Invue
Ephesus
Lumière
Streetworks
AtLite
Sure-Lites

**Our Controls
Product Lines**

Greengate
iLumin
Zero 88
Fifth Light Technology
iLight (International Only)

Eaton
1121 Highway 74 South
Peachtree City, GA 30269
P: 770-486-4800
www.eaton.com/lighting

Canada Sales
5925 McLaughlin Road
Mississauga, Ontario L5R 1B8
P: 905-501-3000
F: 905-501-3172

© 2017 Eaton
All Rights Reserved
Printed in USA
Publication No. BR517002EN
January 2017

Eaton is a registered trademark.

All other trademarks are property
of their respective owners.

Product availability, specifications,
and compliances are subject to
change without notice.



Powering Business Worldwide