

Rittal – The System.

Faster – better – everywhere.

► Component Shelf, Static Installation for TS, SE, PC, IW, prepared for fan expansion kit – PC 8800.900

Date : May 24, 2018

ENCLOSURES

POWER DISTRIBUTION

CLIMATE CONTROL

IT INFRASTRUCTURE

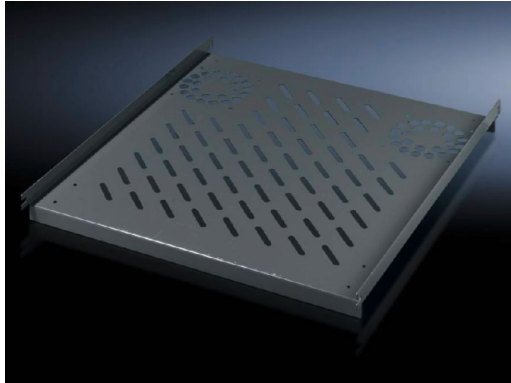
SOFTWARE & SERVICES

FRIEDHELM LOH GROUP



Component Shelf, Static Installation for TS, SE, PC, IW, prepared for fan expansion kit – PC 8800.900

created: 24.05.2018 build on www.rittal.com/us-en



Product description

Description: Simply locate the 4 pre-installed screws and secure.

Material: Carbon steel

Color: RAL 7015

Supply includes: Assembly components

Note: For enclosures without a mounting plate

Product features

Suitable for: Enclosure type: TS
Enclosure type: SE
Enclosure type: PC
Enclosure type: IW
Width: 600 mm (24 ")
Depth: 600 mm (24 ")
Note: For enclosures without mounting plate

Installation options: On the vertical TS, SE enclosure section

Support area: Width: 507 mm (20 ")
Depth: 550 mm (22 ")

Load capacity: 40 kg surface load, static

Packaging unit:	1 pc(s).
Weight/packaging unit:	4.6 kg (10.1 lb.)
EAN:	4028177263086
Customs tariff number:	94039010
ETIM 6.0:	EC002620
ETIM 5.0:	EC002620
eCl@ss 8.0/8.1:	27189261
eCl@ss 7.0/7.1:	27189261
eCl@ss 6.0/6.1:	27189261
eCl@ss 5.1/5.1.4:	27189218
Product description (long):	PC Component shelf, static installation, for TS, PC, IW, prepared for fan expansion kit, for WD: 400x600 mm
Approvals	
Certificates:	EAC