

Rittal – The System.

Faster – better – everywhere.

► Section for cable entry, center for TS, SE, CM, TP – TS 8802.120

Date : May 24, 2018

ENCLOSURES

POWER DISTRIBUTION

CLIMATE CONTROL

IT INFRASTRUCTURE

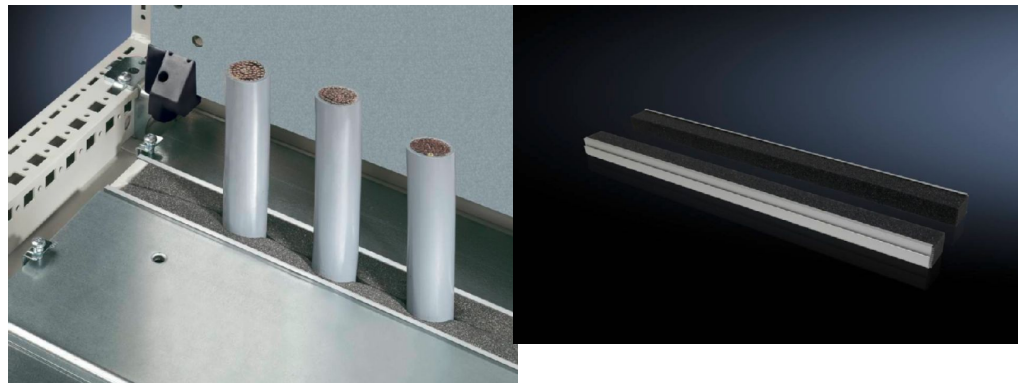
SOFTWARE & SERVICES

FRIEDHELM LOH GROUP



Section for cable entry, center for TS, SE, CM, TP – TS 8802.120

created: 24.05.2018 build on www.rittal.com/us-en



Product description

Description: To seal the cable entry between the base plates.

Benefits: Particularly well-suited to cables with identical cross-sections

Applications: For top-mounting on base plates

Material: Extruded aluminum section
Foam rubber cable clamping profile: PU foam

Technical specifications: Foam rubber cable clamping profile: Cross-section: 30 x 25 mm

Protection category IP to IEC 60 529: IP 55 if correctly installed

Supply includes: Plug-in sections, incl. foam rubber clamp strip

Note: 2 pc(s). are sufficient for one base opening up to an enclosure width of 800 mm
From an enclosure width of 1,000 mm, two base openings are provided. 4 units per enclosure may be fitted

Product features

Suitable for: Enclosure type: TS
Enclosure type: SE
Enclosure type: CM
Enclosure type: TP
Width: 1200 mm (47 ")

Packaging unit:	4 pc(s).
Weight/packaging unit:	0.43 kg (1 lb.)
EAN:	4028177382510
Customs tariff number:	76042990
ETIM 6.0:	EC000211
ETIM 5.0:	EC000211
eCl@ss 8.0/8.1:	27142421
eCl@ss 7.0/7.1:	27400604
eCl@ss 6.0/6.1:	27400604
eCl@ss 5.1/5.1.4:	27189222
Product description (long):	TS Section for cable entry, centre, for TS, SE, CM, TP, for W: 1200 mm
Approvals	
Certificates:	EAC