

Installation Instructions

35MTB5-T Bracket Assembly

CONTENTS: Pole Mounting Bracket, Tri-Mount Bracket, 3-Connector grips, 3-1/2 x 1" Lg Carriage Bolt with Nut and Lock washer, 3-3/8 x 1" Lg Hex Bolt with Nut and Lockwasher, Installation Instructions.

The 35MTB5-T bracket assembly provides a means of mounting three premolded rubber terminators directly to a riser pole. This assembly also supports the weight of the cables entering the terminators.

DANGER

All apparatus must be de-energized during installation or removal of part(s). For loadbreak products follow operating instructions.

All apparatus must be installed and operated in accordance with individual user, local, and national work rules. These instructions do not attempt to provide for every possible contingency.

Do not touch or move energized products.

Excess distortion of the assembled product may result in its failure.

Inspect parts for damage, rating and compatibility with mating parts.

FOR MORE INFORMATION ON PARTS, INSTALLATION RATINGS AND COMPATIBILITY, CALL THE NEAREST ELASTIMOLD OFFICE.

This product should be installed only by competent personnel trained in good safety practices involving high voltage electrical equipment. These instructions are not intended as a substitute for adequate training or experience in such safety practices.

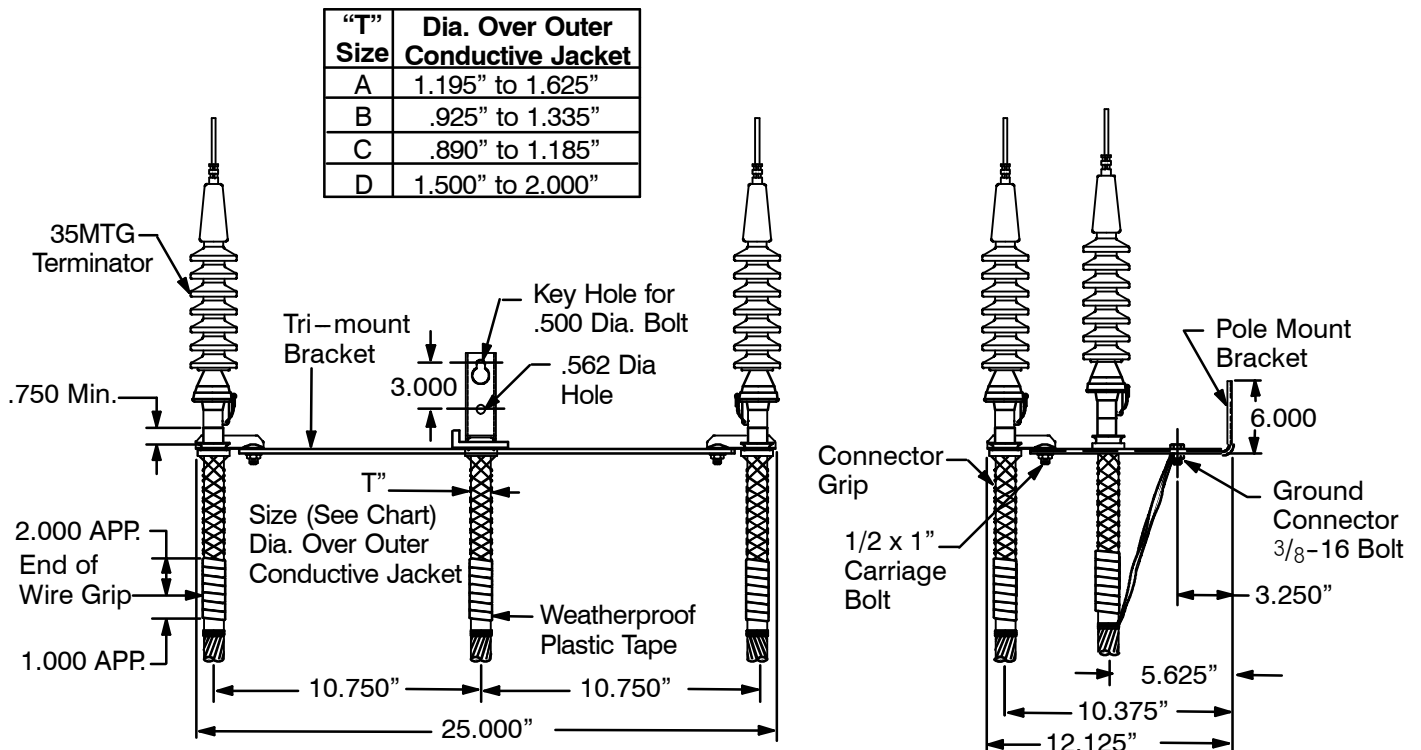
Failure to follow these instructions will result in damage to the product and serious or fatal injury.

If this product is supplied with a protective shipping cover(s), remove this shipping cover(s) and replace with the appropriate HV insulated cap(s) or connector(s) before submerging or energizing the circuit.

IMPORTANT

1. Check contents of package to ensure they are complete and undamaged.
 2. Check all components to ensure proper fit with cable and/or mating products.
 3. Read entire installation instructions before starting.
 4. Have all required tools at hand and maintain cleanliness throughout the procedure.
-

1. Attach pole-mounting bracket to desired mounting surface using proper size bolts (not supplied). Attach tri-mount bracket with 3/8-16 x 1" bolts supplied. Attach connector grips with 1/2" x 1" carriage bolts supplied. Feed cable through connector grips. Allow sufficient cable length for mounting terminators. (Refer to terminator instructions.)
2. Apply weather-proof plastic tape approx. 2" from bottom end of wire grip. Tightly wrap tape with one-half tape width over lap "down" grip approximately 1" onto cable. Reverse direction "up" and wrap to starting point. Stretch tape to approximately one-half original width when taping wire grip.
3. Install terminator (refer to the terminator instructions).
4. The concentric neutral from the cable(s), the electrostatic drain wire(s) from the terminator(s), and the mounting bracket must be grounded.
5. The mounting bracket is provided with a mounting hole and bolt for attachment of suitable grounding connector (not supplied).



Thomas & Betts

8155 T&B Boulevard, Memphis, Tennessee 38125
(800) 888-0211 Fax: (800) 888-0690