

Rittal – The System.

Faster – better – everywhere.

Terminal Studs – SV 9650.370

Date : May 24, 2018

ENCLOSURES

POWER DISTRIBUTION

CLIMATE CONTROL

IT INFRASTRUCTURE

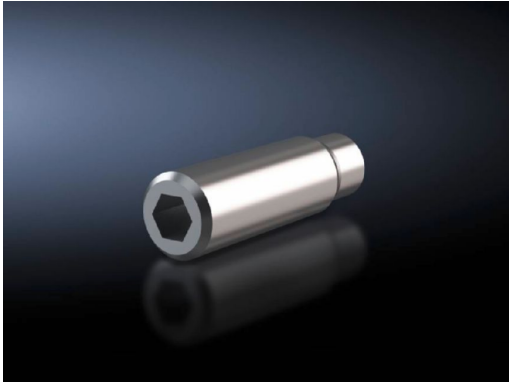
SOFTWARE & SERVICES

FRIEDHELM LOH GROUP



Terminal Studs – SV 9650.370

created: 24.05.2018 build on www.rittal.com/us-en



Product description

Applications: For connecting cables with ring terminals/lugs

Supply includes: Sliding Blocks

Product features

Suitable for busbars: Type: Maxi-PLS 3200

Thread: M12
Length: 32 mm (1.3 ")

Packaging unit: 3 pc(s).

Weight/packaging unit: 0.32 kg (0.7 lb.)

EAN: 4028177239548

Customs tariff number: 74199990

ETIM 6.0: EC002498

ETIM 5.0: EC002498

eCl@ss 8.0/8.1: 27379201

eCl@ss 7.0/7.1: 27400613

eCl@ss 6.0/6.1:	27400613
eCl@ss 5.1/5.1.4:	27370302
Product description (long):	SV Terminal stud, M12, L: 32 mm, (Maxi-PLS 3200)
Approvals	
Approvals:	UR