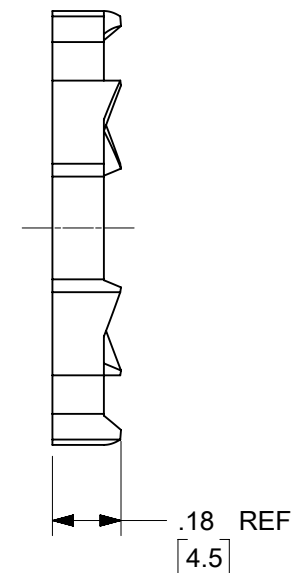
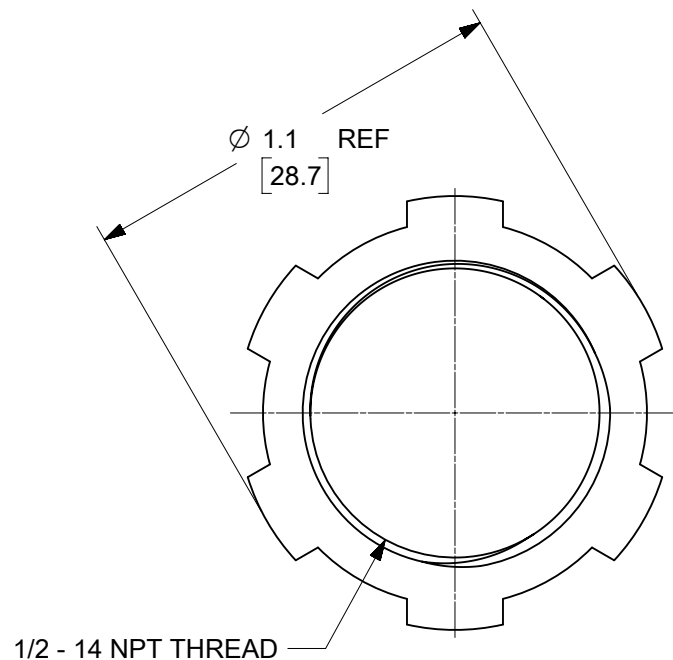
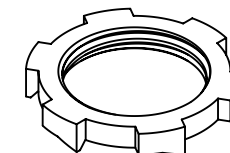
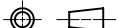


6		5	
MATERIAL NO.	ENGINEERING NO.	MATERIAL	
1300990143	5601	STEEL, ZINC PLATED	



NOTES:

1. LOCKNUT MUST BE U.L. AND CSA APPROVED.
2. LOCKNUT MUST HAVE  $1\frac{3}{4} \pm 1/4$  THREADS.
3. PLATING SHALL MEET U.L. PLATING REQUIREMENT FOR INSIDE ENCLOSURE/BOX PER U.L. STD 514 B.
4. U.L. AND CSA MARKINGS TO APPEAR ON OUTSIDE OF CARTONS.

SYMBOLS	THIS DRAWING CONTAINS INFORMATION THAT IS PROPRIETARY TO MOLEX ELECTRONIC TECHNOLOGIES, LLC AND SHOULD NOT BE USED WITHOUT WRITTEN PERMISSION																
<div><div><div><div><div></div></div></div><div><div></div></div></div><div>= 0</div></div> <div><div><div><div><div></div></div></div><div><div></div></div></div><div>= 0</div></div> <div><div><div><div><div></div></div></div><div><div></div></div></div><div>= 0</div></div>	DIMENSION UNITS		SCALE		CURRENT REV DESC: ADD NOTES			<div>molex</div>									
	HYBRID		2:1														
<div><div><div><div><div></div></div></div><div><div></div></div></div><div>= 0</div></div> <div><div><div><div><div></div></div></div><div><div></div></div></div><div>= 0</div></div> <div><div><div><div><div></div></div></div><div><div></div></div></div><div>= 0</div></div>	GENERAL TOLERANCES (UNLESS SPECIFIED)				EC NO: 603132 DRWN: MZIELINSKI 2018/08/21 CHK'D: MZIELINSKI 2018/08/21 APPR: BWOODMAN 2018/08/25			LOCKNUT - 1/2 MAX-LOC USE30-1100LOCKNUT									
	ANGULAR TOL ± 0.5°																
<div><div><div><div><div></div></div></div><div><div></div></div></div><div>= 0</div></div> <div><div><div><div><div></div></div></div><div><div></div></div></div><div>= 0</div></div> <div><div><div><div><div></div></div></div><div><div></div></div></div><div>= 0</div></div>	4 PLACES		±		INITIAL REVISION: DRWN: NKUMARO1 2009/06/03 APPR: JFMURPHY 2009/07/08			DOCUMENT NUMBER		DOC TYPE	DOC PART	REVISION					
	3 PLACES		±					SD-130099-143		PSD	001	B					
<div><div><div><div><div></div></div></div><div><div></div></div></div><div>= 0</div></div> <div><div><div><div><div></div></div></div><div><div></div></div></div><div>= 0</div></div> <div><div><div><div><div></div></div></div><div><div></div></div></div><div>= 0</div></div>	2 PLACES		±		PRODUCT CUSTOMER DRAWING			SD-130099-143		PSD	001	B					
	1 PLACE		± 0.3														
<div><div><div><div><div></div></div></div><div><div></div></div></div><div>= 0</div></div> <div><div><div><div><div></div></div></div><div><div></div></div></div><div>= 0</div></div> <div><div><div><div><div></div></div></div><div><div></div></div></div><div>= 0</div></div>	0 PLACES		±		THIRD ANGLE PROJECTION			DRAWING		SERIES		MATERIAL NUMBER		CUSTOMER		SHEET NUMBER	
	DRAFT WHERE APPLICABLE MUST REMAIN WITHIN DIMENSIONS							A-SIZE		130099		GENERAL MARKET		1 OF 1			