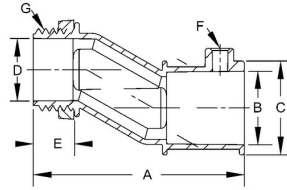




EMT SET SCREW OFFSET CONNECTORS

Set Screw Offset Connector Die Cast Zinc
N/A

B12



Catalog #: 1763

APPLICATIONS

For use in dry locations to bond EMT conduit to a box or enclosure
N/A

PRODUCT FEATURES

Rugged metallic construction insures mechanical protection for the raceway
Suitable for applications above 600V
Concrete-tight when taped

UL LISTED

File E195969

CSA

C22.2 No. 18

GENERAL PRODUCT INFORMATION

Sub Class: Uninsulated
Trade Size: 3/4 in.

DRAWING DIMENSIONS

Dimension A: 3-1/64 in.
Dimension B: 15/16 in.
Dimension C: 1-1/32 in.
Dimension D: 55/64 in.
Dimension E: 15/32 in.
Dimension F: 10-24 x 5/16 in.
Dimension G: 3/4 in. - 14

PACKAGING

Package Type: Carton
Ship Carton Qty.: 25
Product UPC-A Labeled: No
Weight (Lbs. Per/C): 17.50
Ship Carton Length (in.): 7.45
Ship Carton Width (in.): 5.37
Ship Carton Height (in.): 5.45
Ctn Weight (Lbs.): 4.38
UPC Number: 050169017630
I2of5: 50050169017635