



UTILITY LIGHT – INTRODUCTION



Class I, Div. 2, Groups A,B,C,D
 Class I, Zone 2, Groups IIC,IIB,IIA
 Class II, Div. 2, Groups F,G
 Class III
 Suitable for wet locations
 Enclosure Type 4

Certified - File LR11713

V SERIES LED

FEATURES-SPECIFICATIONS

Introduction

Killark 'VSL' Series LED fixtures are designed for installations where moisture, dirt, dust, corrosion and vibration may be present, or Type 3 and 4 areas where wind, water, snow or high ambients can be expected. VSL's are sized to replace "Utility" type fixtures (incandescent or CFL's) in hallways, closets, elevator pits, docks, stairwells, access tunnels, and mechanical rooms. These fixtures can be used in locations made hazardous by the presence of flammable vapors or gases or combustible dusts as defined by the NEC. Typical applications include manufacturing plants, and certain chemical and petrochemical processing facilities, sewage treatment plants, off-shore and dockside installations, and garage areas.

LED Luminaire Features and Standards

- Compact in Size with Traditional Industrial Appearance and Suitability
- Wide variety of optics including glass globes (clear and tempered, color) plus polycarbonate globes in clear and colors (Polycarbonate globes are suitable to 40°C.)
- Optional Mounting arrangements including Pendant, Wall, Ceiling, Stanchion and Adapters
- Fixtures available unit packed, order option CP
- VSL LED Housings can be retrofitted to existing V Series splice boxes; upgrade from CFL or incandescent
- Energy Savings – less than 13 Watts of Power; less than 16 Watts for VSL1630. Replaces 75W or higher incandescent

- Long Fixture Life – 50,000 - 55,000 maintenance free hours
- Crisp White Light for Excellent Color Rendering – Chromaticity 5000°K (CCT); 70 CRI
- Integral driver – maintains fixture's compact profile to fit in existing spaces
- Ambient suitability -40°C to 55°C
- Instant on – including after power interruption
- "World Voltage" 120-277VAC 50/60Hz
- Solder-LESS LED Board Connections – Vibration Resistant

Compliances

- UL-8750 for LED lighting
- UL 1598 standard for luminaires
- UL-844 Standard for lighting fixtures for hazardous locations, Class I, Division 2; Class II, Division 2; Class III, Division 2
- CSA C22.2 no. 137-M1981 electric luminaires for use in hazardous locations
- Enclosed and gasketed
- Type 3, 4

Materials, Weights

- Body, splice box and guards are corrosion resistant copper-free aluminum alloy
- Baked powder epoxy/polyester finish, electrostatically applied for complete, uniform corrosion protection
- Reflectors – Polypropylene for pendant or ceiling applications
- Heavy-duty silicone gasketing for Type 4 requirements

Optic Selection Examples

- Broadest **COLOR** globe offering for Hazardous Locations in the industry
- Use as status lights or specialty/emergency indicators



LIGHTING

VSL SERIES



UTILITY LIGHT – CATALOG LOGIC



Clear Glass w/Guard White Glass w/Guard Blue Glass Clear Polycarbonate Red Polycarbonate

Class I, Div. 2, Groups A,B,C,D
Class I, Zone 2, Groups IIC,IIB,IIA
Class II, Div. 2, Groups F,G
Class III
Suitable for wet locations
Enclosure Type 4

Certified - File LR11713

V SERIES LED Catalog Number Logic

VSL Series Constant — 1

Lamp Wattage — 2
 13 = 13W LED
 16 = 16W LED

Voltage — 3
 30 – 120-277VAC (13W, 16W)
 27 – 12-24VDC (13W, 16W)
 34 – 120-250VDC (13W)

Mounting Type — 4
 NN – Mounr Ordered Separately
 A1 – 1/2" Pendant (VGA-1)
 A2 – 3/4" Pendant (VGA-2)
 F1 – 1/2" Ceiling w/Feet & Adapter (VBC-1 w/VBA)
 F2 – 3/4" Ceiling w/Feet & Adapter (VBC-2 w/VBA)
 X1 – 1/2" Ceiling (VGX-1)
 X2 – 3/4" Ceiling (VGX-2)
 C1 – 1/2" Ceiling (VGC-1)
 C2 – 3/4" Ceiling (VGC-2)
 H1 – 1/2" Ceiling Dead End (VGH-1)
 H2 – 3/4" Ceiling Dead End (VGH-2)
 D1 – 1/2" Ceiling Deep (VXA-1)
 D2 – 3/4" Ceiling Deep (VXA-2)
 D4 – 1-1/4" Stanchion (VD-4)
 RA – Round (Box) Adapter (VBA)
 SA – Square (Box) Adapter (VFPS)
 W1 – 1/2" Wall w/Feet (VBC-1 w/VB-1)
 W2 – 3/4" Wall w/Feet (VBC-2 w/VB-2)
 V1 – 1/2" Wall Elbow (VB-1)
 V2 – 3/4" Wall Elbow (VB-2)
 FL – Elbow for "V" Box (VFL)

5 — **S** — Standard Reflector (Pendant or Ceiling Use Only)
CP – Component Pack

6 — **G - B** — **Optic Color (Optic Type)**
A – Amber (S, H, P)
B – Blue (S, H)
R – Red (S, H, P)
G – Green (S, P)
P – Purple (S)
BG – Blue Green (S, H)
W – White (S)

7 — **S** — **Guard**
G – Guard (For Glass Globes Only)
N – No Guard (Standard on Polycarbonate Globes)
R – Guard Red (For Glass Globes Only)
 Can Signify Emergency UPS Circuits

8 — **Optics****
S – Standard Globe (Clear)
H – Heat Resistant (Tempered) Globe (Clear)
P – Polycarbonate (Clear)



COLORED GLOBE OPTIONS** EXAMPLE VSL1330A1SG-A			
SUFFIX AND AVAILABLE COMBINATIONS			
COLOR NUMBER	STANDARD GLOBE	TEMPERED GLOBE	POLYCARBONATE
AMBER	A	A	A
BLUE	B	B	—
RUBY	R	R	R
GREEN	G	—	G
PURPLE	P	—	—
BLUE-GREEN	BG	BG	—
WHITE	W	W	W



** Use tempered glass or poly globe for wet location applications.



UTILITY LIGHT – COMPONENTS



VSL Body

**RETROFIT
FOR ENERGY
SAVINGS**

VSL Fixture Bodies Only

Fixture bodies contain the LED driver and array, heat sink plus gaskets, and are threaded to accept globes, guards and reflectors. Users with KILLARK “V” Series vapor tight fixtures from the 1960’s onward can up-grade to the latest technology and, in many cases, reuse existing mounts, globes and guards. VSL bodies are designed for metallic boxes and mount directly to V Series splice boxes or adapters as indicated.

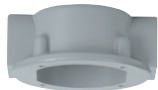
VSL FIXTURE BODIES	
CATALOG NUMBER	DESCRIPTION
VSL1330	13W 120-277VAC 50/60Hz Body with LEDs and Driver
VSL1630	16W 120-277VAC 50/60Hz Body with LEDs and Driver



VGA



VGH



VGC



VGX



VXA



VBC



VBA



VFPS

VSL Splice Boxes

For use with VSL Series fixture bodies.

VSL SPLICE BOXES				
CATALOG NUMBER	HUB SIZE	QTY.	LOGIC CODE	DESCRIPTION
VGA-1	1/2"	1	A1	Pendant mount
VGA-2	3/4"	1	A2	
VGH-1	1/2"	1	H1	Ceiling mount
VGH-2	3/4"	1	H2	
VGC-1	1/2"	2	C1	Ceiling mount
VGC-2	3/4"	2	C2	
VGX-1	1/2"	4	X1	Ceiling mount
VGX-2	3/4"	4	X2	
VXA-1	1/2"	5	D1	Ceiling mount, deep box
VXA-2	3/4"	5	D2	
VBC-1	1/2"	4	F1	Ceiling mount, with 3 close-up plugs (requires VBA Adapter) or wall mount with VB elbow
VBC-2	3/4"	4	F2	
VXAB	–	–	–	Blank close-up plate (less gasket)

VSL Adapters

VSL ADAPTER MOUNTING PLATES	
CATALOG NUMBER	DESCRIPTION
VBA	Adapts fixture body to VB, VJ or steel 3-1/2" & 4" splice boxes. Supplied with gasket.
VFPS	Adapts fixture body to steel 4" square outlet boxes or 3-1/2" or 4" octagon boxes

VSL Wall/Stanchion Mounts



VB



VFL



VD

VSL MOUNTING BRACKETS			
CATALOG NUMBER	HUB SIZE	QTY.	DESCRIPTION
VB-1	1/2"	1	Wall mount to VJ or VB boxes
VB-2	3/4"	1	Wall mount to VJ or VB boxes
VFL	–	–	Wall mount to V boxes directly or to VJ, VB boxes with VBA adapter
VD-4	1-1/4"	1	Stanchion mount

LIGHTING

VSL SERIES



UTILITY LIGHT – COMPONENTS, RATINGS & WEIGHTS

VSL Globes



VSL GLOBES – ORDERING INFORMATION AND SUFFIX GRID*						
COLOR	GLASS	OPTIC LOGIC	TEMPERED GLASS	OPTIC LOGIC	POLYCARBONATE	OPTIC LOGIC
Clear	VCG-100	S*	VCGP-100	H*	VPLCG-100	P*
Amber	AMG-100	A	VAMGP-100	A	VPLCG-100A	A
Blue	VBG-100	B	VBGP-100	B	–	–
Ruby (Red)	VRG-100	R	VRGP-100	R	VPLCG-100R	R
Green	VRSG-100	G	–	–	VPLCG-100G	G
Purple	VPG-100	P	–	–	–	–
Blue-Green	VGG-100	BG	VGGP-100	BG	–	–
White	VWG-100	W	VWGP-100	W	VPLCG-100W	W

* Use tempered glass or polycarbonate globes for wet location applications.

VSL Components



VSL COMPONENT PARTS AND ACCESSORIES	
CATALOG NUMBER	DESCRIPTION
VAG-100	Aluminum Guard for use with Glass Globe
VAG-100R	Red Aluminum Guard for use with Glass Globe
VTG-S	Body to Splice Box Gasket – Silicone
VTGG1-S	Globe Gasket – Silicone
VPRSD-100	White polypropylene for pendant & ceiling applications. Not for use with wall or stanchion models.

Typical Weights (lbs.) w/Standard Globe and Guard – VSL Series			
Pendant 7.03	Ceiling 7.51	Wall 8.09	Stanchion 7.61

VSL Thermal Ratings

VSL THERMAL PERFORMANCE DATA INCLUDING VPRSD-100 REFLECTOR								
CATALOG NUMBER	AMBIENT	C1D2		C2D2		SUPPLY	L70	
		GLASS GLOBE	POLY GLOBE	GLASS GLOBE	POLY GLOBE	WIRE	TM-21	CALCULATED
VSL1330	40°C	T6	T5	T5 (F,G)	T5 (F,G)	90°	60,500	100,000+
VSL1330	55°C	T5	–	–	–	90°	60,500	100,000+
VSL1630	40°C	T5	–	T5 (F,G)	–	90°	60,500	100,000+

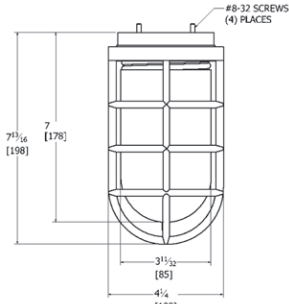
VSL Electrical Ratings

VSL LED BODY WITH DRIVERS/JAND LEDS – ELECTRICAL RATINGS					
CATALOG NUMBER	VOLTAGE 50/60HZ	WATTS	AMPS 120/277	LUMENS	WEIGHT LBS.
VSL1330	120-277VAC	12.42	.108/.047	1300	5.0
VSL1630	120-277VAC	15.64	.156/.067	1625	5.0

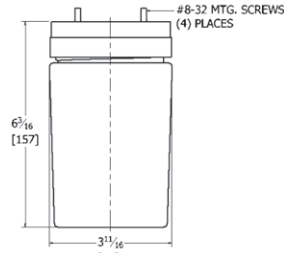
DELIVERED LUMENS			
WATTS	W/GLOBE VCG-100	W/GLOBE VPLCG-100	W/GLOBE VWG100
13W	1211	1104	905
16W	1328	1308	1072



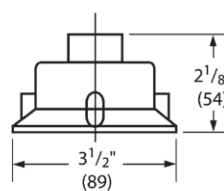
UTILITY LIGHT – DIMENSIONS



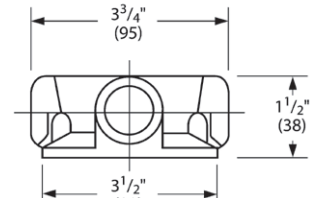
VSL Body w/Globe & Guard, No Splice Box



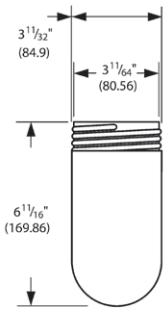
VSL Body w/Polycarbonate Globe, No Splice Box



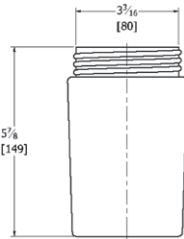
VGA



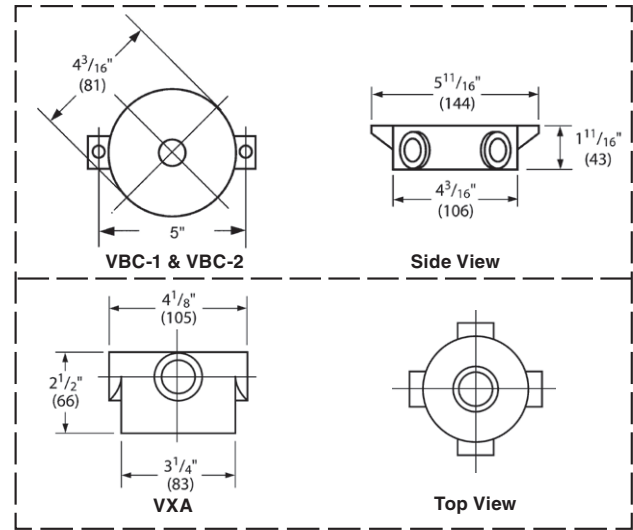
**VGC or VGX
*VGH is 3-5/8" (92)**



Glass Globe



Polycarbonate Globe

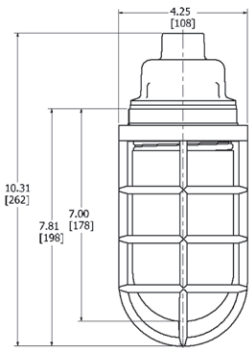


VBC-1 & VBC-2

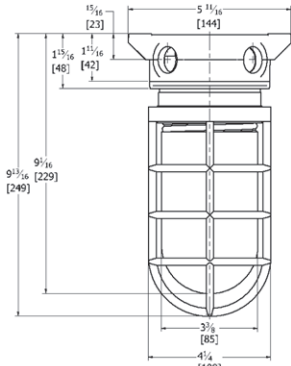
Side View

VXA

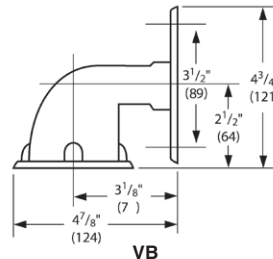
Top View



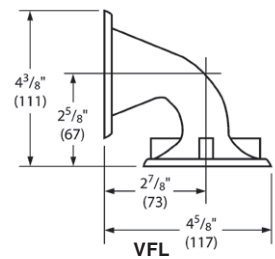
VSL Pendant Fixture w/Globe & Guard



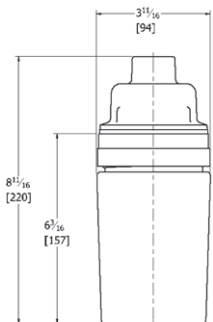
VSL Ceiling Fixture w/Globe & Guard



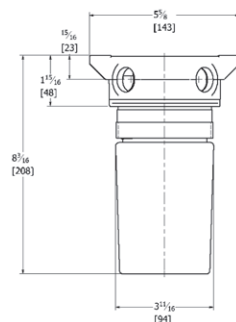
VB



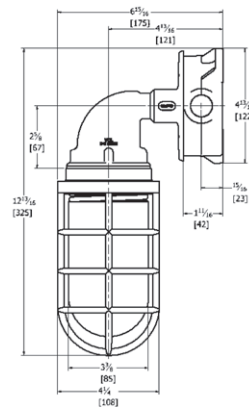
VFL



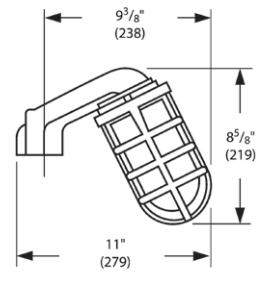
VSL Pendant Fixture w/Polycarbonate Globe



VSL Ceiling Fixture w/Polycarbonate Globe



VSL Wall Mounted Fixture w/Globe & Guard



VSL Stanchion Fixture w/Globe & Guard