

BALDOR® • RELIANCE

Product Information Packet

EM4406TS-4

150HP, 1785RPM, 3PH, 60HZ, 445TS, A4488M, TEFC

Part Detail							
Revision:	L	Status:	PRD/A	Change #:		Proprietary:	No
Type:	AC	Elec. Spec:	A44WG3335	CD Diagram:	416820-036	Mfg Plant:	
Mech. Spec:		Layout:	617427-004	Poles:	04	Created Date:	08-13-2012
Base:		Eff. Date:	10-25-2017	Leads:	3#1/0	Y	

Specs			
Catalog Number:	EM4406TS-4	Heater Indicator:	No Heater
Enclosure:	TEFC	Insulation Class:	F
Frame:	445TS	Inverter Code:	Inverter Ready
Frame Material:	Iron	KVA Code:	F
Output @ Frequency:	150.000 HP @ 60 HZ	Lifting Lugs:	Standard Lifting Lugs
Synchronous Speed @ Frequency:	1800 RPM @ 60 HZ	Motor Lead Quantity/Wire Size:	3 @ 1/0 AWG
Voltage @ Frequency:	460.0 V @ 60 HZ	Motor Type:	A4488M
XP Class and Group:	None	Mounting Arrangement:	F1
XP Division:	Not Applicable	Power Factor:	86
Agency Approvals:	CCSA US	Product Family:	Other
	CSA EEV	Pulley End Bearing Type:	Ball
Auxillary Box:	No Auxillary Box	Pulley Face Code:	Standard
Base Indicator:	Rigid	Shaft Ground Indicator:	No Shaft Grounding
Bearing Grease Type:	Polyrex EM (-20F +300F)	Shaft Rotation:	Reversible
Current @ Voltage:	169.000 A @ 460.0 V	Shaft Slinger Indicator:	No Slinger
Design Code:	B	Speed Code:	Single Speed
Drip Cover:	No Drip Cover	Motor Standards:	NEMA
Duty Rating:	CONT	Starting Method:	Direct on line

Feedback Device:	NO FEEDBACK	Thermal Device - Bearing:	None
		Thermal Device - Winding:	None

Nameplate NP2383L

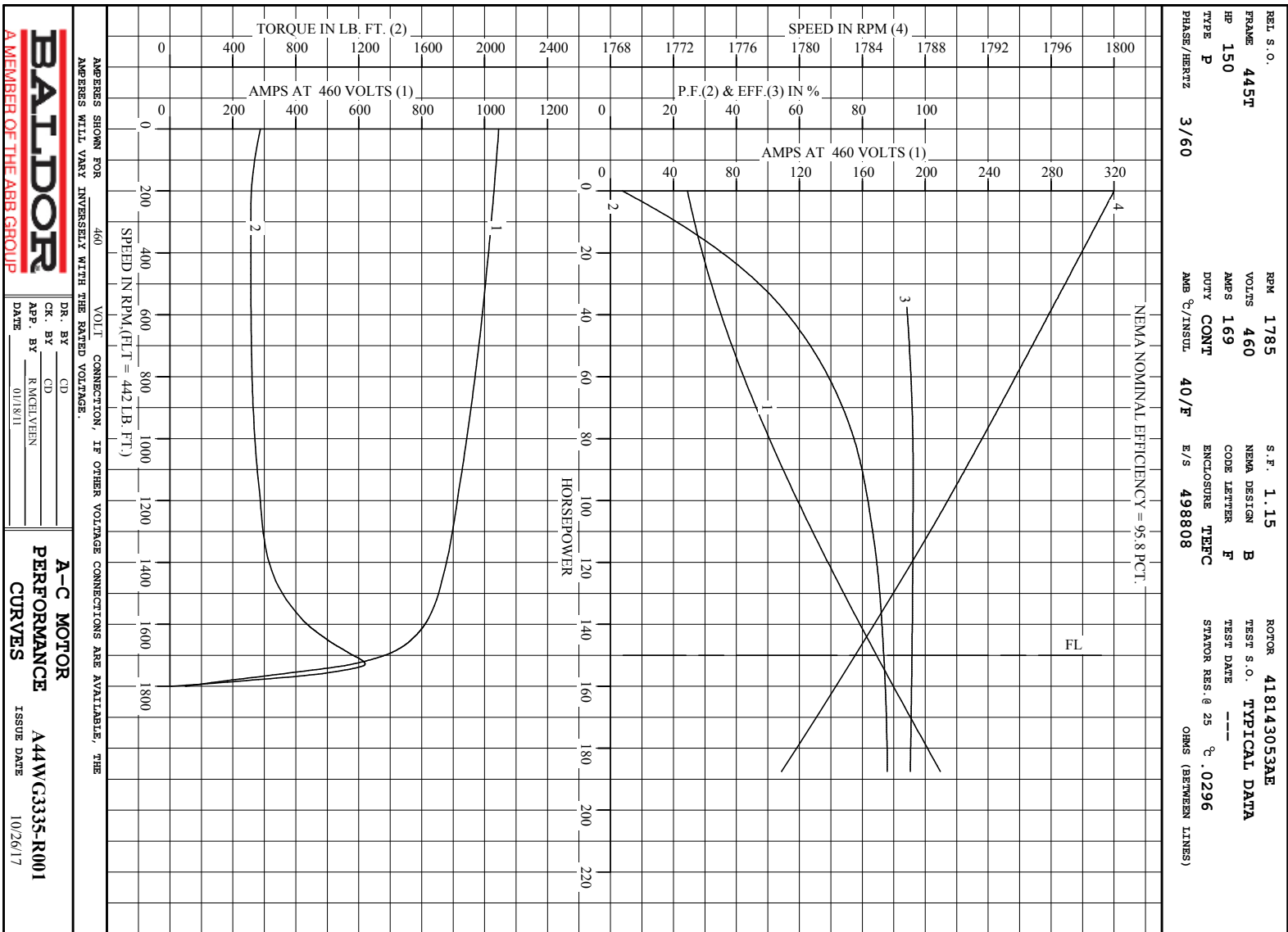
CAT.NO.	EM4406TS-4	SPEC NO.	P44G3909
HP	150	AMPS	169
VOLTS	460	DESIGN	B
FRAME	445TS	RPM	1785
HZ	60	AMB	40
SF	1.15	INSUL.CLASS	F
DRIVE END BEARING	90BC03J30X	PHASE	3
DUTY	CONT	TYPE	P
OPP D.E. BEARING	90BC03J30X	ENCL	TEFC
CODE	F	POWER FACTOR	86
SER.NO.		NEMA-NOM-EFFICIENCY	95.8
		MAX CORR KVAR	30.0
		GUARANTEED EFFICIENCY	95.0
NEMA NOM/CSA QUOTED EFF		MOTOR WEIGHT	2071

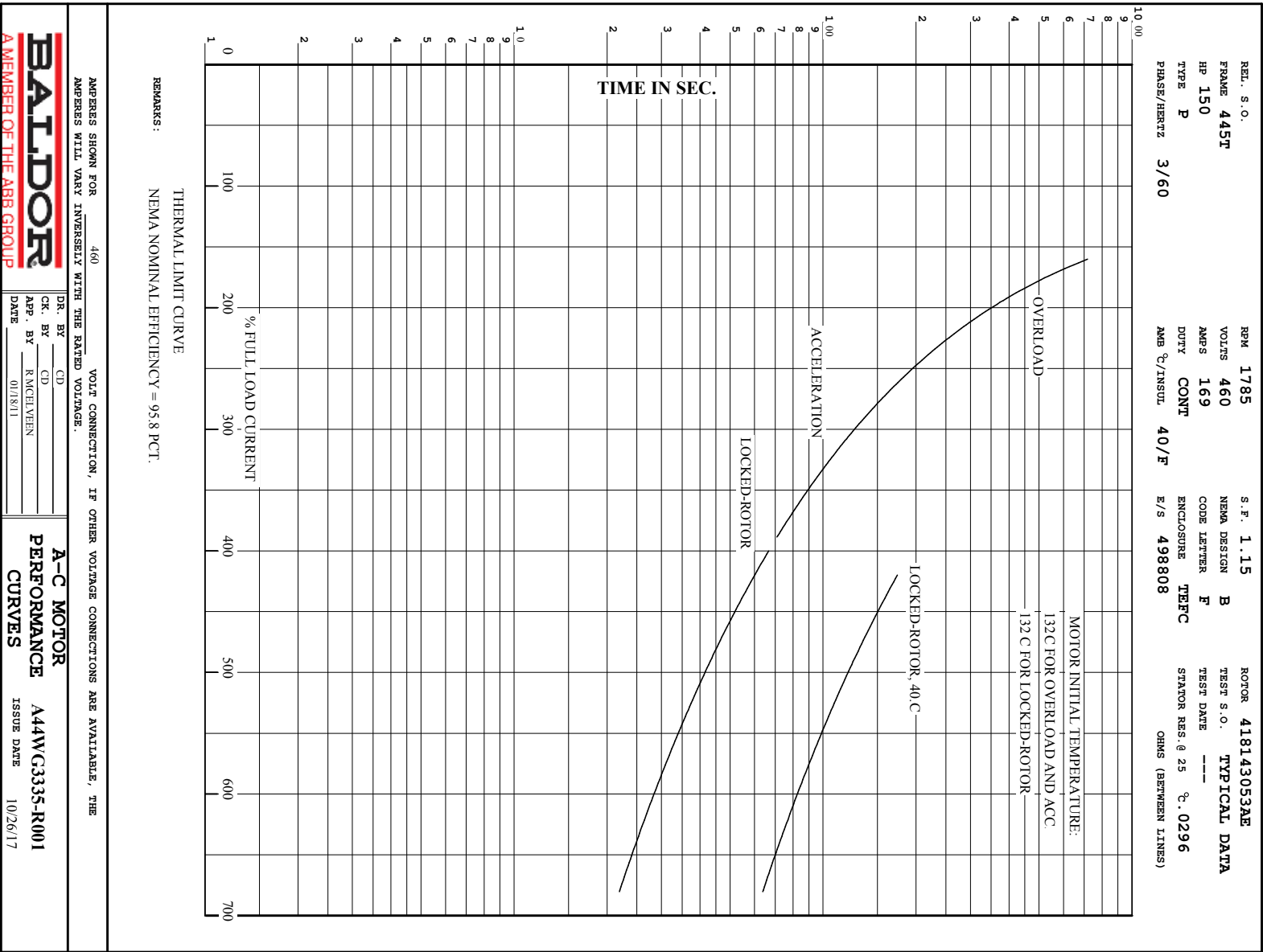
REL. S.O.	FRAME	HP	TYPE	PHASE/ HERTZ	RPM	VOLTS
	445T	150	P	3/60	1785	460
AMPS	DUTY	AMB ^{°C} / INSUL.	S.F.	NEMA DESIGN	CODE LETTER	ENCL.
169	CONT	40/F	1.15	B	F	TEFC
E/S	ROTOR	TEST S.O.	TEST DATE	STATOR RES. @25 ^{°C} OHMS (BETWEEN LINES)		
49808	418143053AE	---	---	.0296		
PERFORMANCE						
LOAD	HP	AMPERES	RPM	POWER FACTOR	% EFFICIENCY	
NO LOAD	0	49.0	1800	3.78	0	
1/4	37.6	68.7	1796	54.4	94.2	
2/4	75.0	96.7	1792	75.7	96.0	
3/4	112	131	1788	83.6	96.1	
4/4	150	169	1784	86.8	95.8	
5/4	188	210	1779	87.9	95.2	
SPEED TORQUE						
	RPM	TORQUE % FULL LOAD	TORQUE LB.-FT.	AMPERES		
LOCKED ROTOR	0	130	576	1045		
PULL UP	270	116	514	1024		
BREAKDOWN	1728	281	1240	580		
FULL LOAD	1784	100	442	169		

AMPERES SHOWN FOR 460. VOLT CONNECTION. IF OTHER VOLTAGE CONNECTIONS ARE AVAILABLE, THE AMPERES WILL VARY INVERSELY WITH THE RATED VOLTAGE

REMARKS: TYPICAL DATA
NEMA NOMINAL EFFICIENCY = 95.8 PCT.

BALDOR A MEMBER OF THE ABB GROUP		DR. BY _____ CK. BY _____ APP. BY R. MCLEVERN DATE 01/18/11	A-C MOTOR PERFORMANCE DATA A44WG3335-R001 ISSUE DATE 10/26/17
--------------------------------------------	--	----------------------------------------------------------------------	-------------------------------------------------------------------------------------------------------





DUTY MASTER ALTERNATING CURRENT MOTORS

SQUIRREL-CAGE INDUCTION

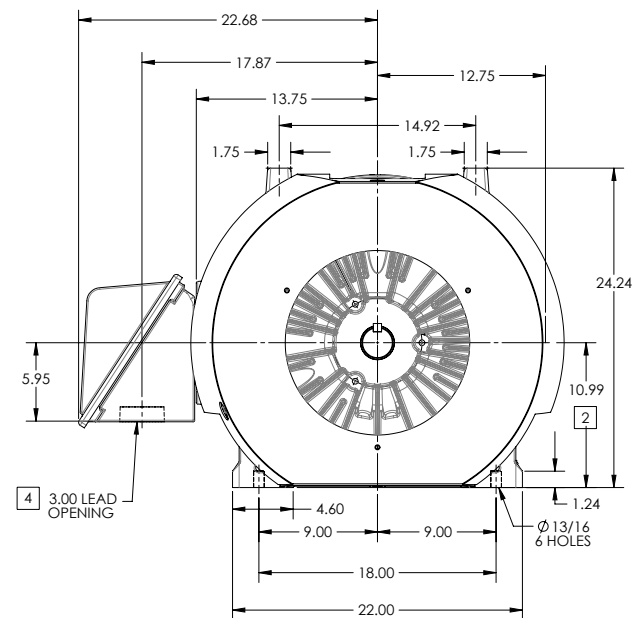
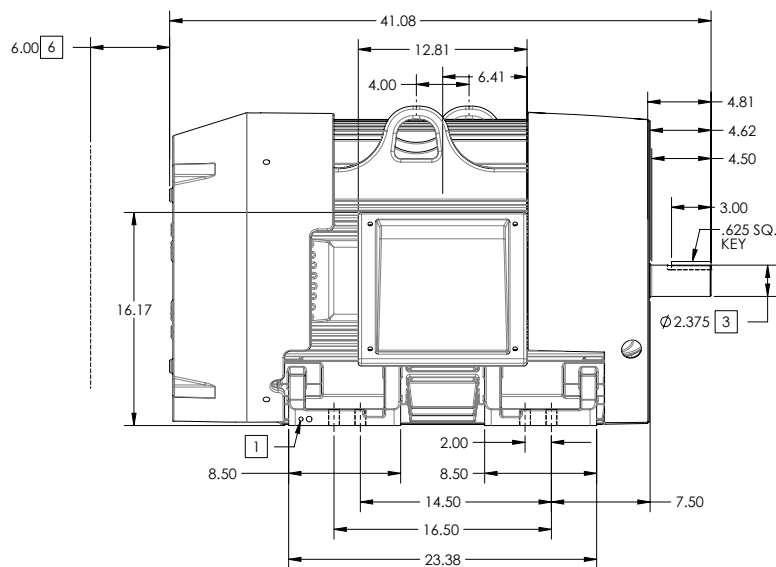
ENCLOSURE: TOTALLY ENCLOSED

FRAME G445TS ABOVE NEMA RATINGS

COOLING: FAN COOLED

MOUNTING: FOOT

INCLUDES 444TS FRAME MOUNTING HOLES



1. GROUND HOLES QTY 1 1/2-13 TAP; QTY 1 3/8-16 TAP
2. VARIES +.00,-.06
3. VARIES +.00,-.001
4. ON STANDARD MOTORS THIS IS CONDUIT SIZE. ON XT AND CORROSION PROOF MOTOR THIS IS PIPE TAP.
5. MOTOR WEIGHTS MAY VARY BY 1.5% DEPENDING ON RATING.
6. OBSTRUCTION MUST NO ENCROACH ON AIR INLET

CONDUIT BOX LOCATED ON OPPOSITE SIDE WHEN F-2.
IF MOUNTING CLEARANCE DETAILS ARE REQUIRED, CONSULT FACTORY.
MAXIMUM PERMISSIBLE SHAFT RUNOUT WHEN MEASURED AT END OF
STANDARD SHAFT EXTENSION IS .003" T.I.R. TO 5 INCH DIA.

[5] WEIGHT (LBS): 2100

DRIVE END AIR DEFLECTOR IS ONLY INCLUDED WHEN NECESSARY.

DIMENSIONS ARE IN INCHES; SEE SHEET 2 FOR DIMENSIONS IN MILLIMETERS

CUSTOMER IS RESPONSIBLE FOR DETERMINING THAT MOTOR PERFORMANCE IS SUITABLE IN THE APPLICATION.

 SHEET NUMBER
1 OF 2

600-277-119

REV. DESC: ADJUSTED OVERALL LENGTH DIMENSION			
REV: D	VERSION: 04	REVISED: 01-45-46 09/09/2013	TDR: 000000816614
MODEL NO. 617427-004		REF:	
BY: RAGISSI	Material:		

BALDOR

G445TS-444TS STD - FOOTED - SIDE/CENTER C/B

DUTY MASTER ALTERNATING CURRENT MOTORS

SQUIRREL-CAGE INDUCTION

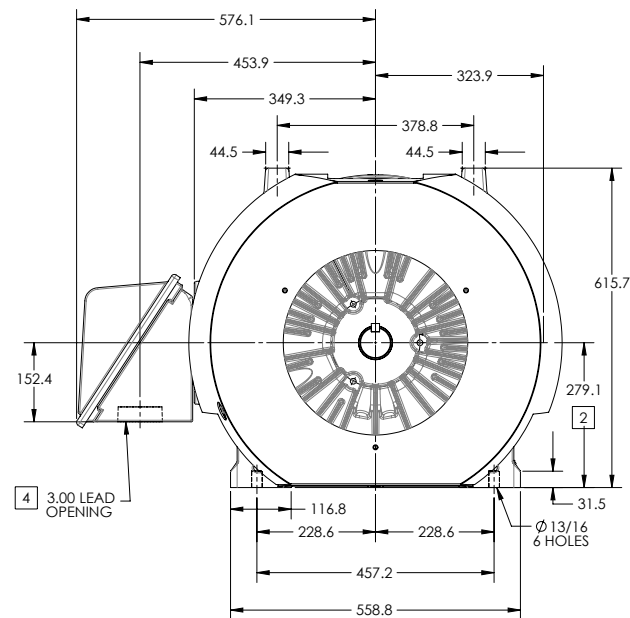
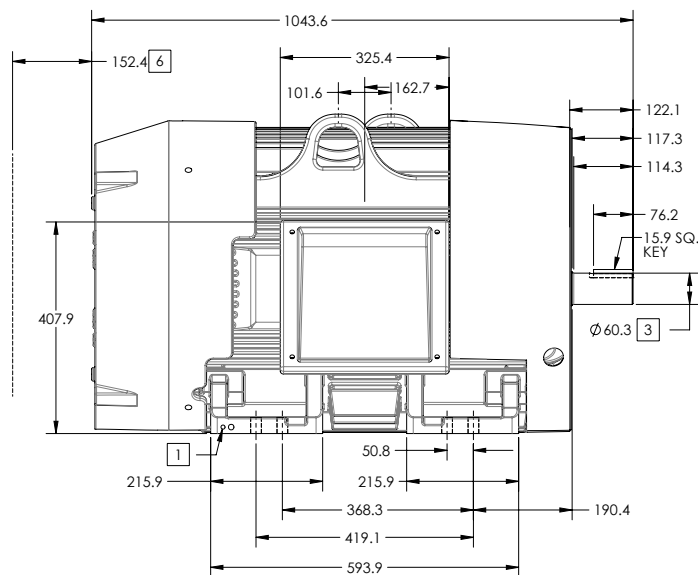
ENCLOSURE: TOTALLY ENCLOSED

FRAME G445TS ABOVE NEMA RATINGS

COOLING: FAN COOLED

MOUNTING: FOOT

INCLUDES 444TS FRAME MOUNTING HOLES



1. GROUND HOLES QTY 1 1/2-13 TAP; QTY 1 3/8-16 TAP
2. VARIES +.00,-.06
3. VARIES +.00,-.001
4. ON STANDARD MOTORS THIS IS CONDUIT SIZE. ON XT AND CORROSION PROOF MOTOR THIS IS PIPE TAP.
5. MOTOR WEIGHTS MAY VARY BY 1.5% DEPENDING ON RATING.
6. OBSTRUCTION MUST NO ENCROACH ON AIR INLET

CONDUIT BOX LOCATED ON OPPOSITE SIDE WHEN F-2.
IF MOUNTING CLEARANCE DETAILS ARE REQUIRED, CONSULT FACTORY.
MAXIMUM PERMISSIBLE SHAFT RUNOUT WHEN MEASURED AT END OF
STANDARD SHAFT EXTENSION IS .08 MM T.I.R. TO 127 MM DIA.

[5] WEIGHT (KGS): 950

DRIVE END AIR DEFLECTOR IS ONLY INCLUDED WHEN NECESSARY.

DIMENSIONS ARE IN MILLIMETERS; SEE SHEET 1 FOR DIMENSIONS IN INCHES

CUSTOMER IS RESPONSIBLE FOR DETERMINING THAT MOTOR PERFORMANCE IS SUITABLE IN THE APPLICATION.

 SHEET NUMBER
2 OF 2

617427-004

REV. DESC: ADJUSTED OVERALL LENGTH DIMENSION			
REV: D	VERSION: 04	REVISED: 01-45-46 09/09/2013	TDR: 000000816614
MODEL NO. 617427-004		REF:	
BY: RAGISSI	Material:		

BALDOR

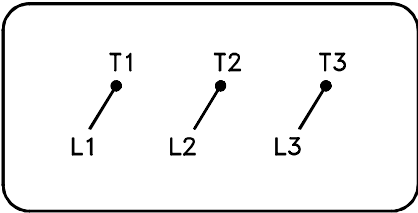
G445TS/444TS STD - FOOTED - SIDE/CENTER C/B

416820-036

A-C MOTOR

CONNECTION DIAGRAM

STANDARD 3 LEAD CONNECTED



(N.P. 1575-B A)

416820-036

REV. DESC: LOADED TO BUS, C/R 335225			BALDOR
REV. LTR: -	VERSION: 00	TDR: 000000538207	
FILE: \MGA\00000\682		REVISED: 11: 54: 06 04/30/2010	
MTL: -		BY: RAGRA	
			CONN DIAG - STANDARD 3 LEAD
			SH 1 of 1