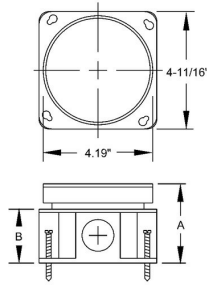




ROUND FLOOR BOX - CONCRETE POUR

Fully Adjustable Floor Box, Stamped Steel
N/A

A97



Catalog #: 6255

APPLICATIONS

Round floor boxes provide flush service for power or voice/data
Floor boxes may be used for carpet or tile floor applications

PRODUCT FEATURES

- Stamped steel, concrete tight, fully adjustable
- Zinc coated finish
- 1/2", 3/4", 1", and 1-1/4" knockouts; all bottom knockouts are accessible
- Brass tile flange provided with box
- RACO® 6236 and 6235 carpet flange must be ordered separately (included brass tile ring must be discarded before installing carpet flange)
- RACO® 6249, 6284, 6285, 6987 brass cover must be ordered separately
- Interior and exterior leveling screws permit adjustment to meet finished floor
- Disposable concrete cap to prevent the entry of concrete during pour included
- N/A

GENERAL PRODUCT INFORMATION

Wiring System: Conduit

CONFIGURATION

Side Knockout(s): (2) 1/2, (2) 3/4, (2) 1, (2) 1-1/4 in.
Bottom Knockouts(s): (3) 1/2 in. & (2) 3/4 in.

PRODUCT MEASUREMENTS

Cubic Inches (cm3):	54.0 (884.8)
Wt. Ea. (Lbs.):	2.460
Product Length (in.):	6.00
Product Width (in.):	3.88
Product Height (in.):	4.81

PACKAGING

Minimum Pack Qty.:	4
Std. Pkg.:	4
Product UPC-A Labeled:	Yes
Weight (Lbs. Per/C):	246.00
Ship Carton Length (in.):	12.50
Ship Carton Width (in.):	5.25
Ship Carton Height (in.):	12.50
Ctn Weight (Lbs.):	9.84
Pallet Qty:	384
UPC Number:	050169062555
l2of5:	50050169062550