

**E-PAK™ CONDUIT BODIES**  
**ALUMINUM - THREADED WITH COVER**  
**AND GASKET INCLUDED**



**Aluminum Conduit Bodies with Cover and Gasket Applications**



- For use on threaded rigid/IMC conduit
- Use conduit outlet bodies for connecting conduit sections, for making bends in conduit runs, as pull outlets, or to provide openings for making splices and taps in conductors

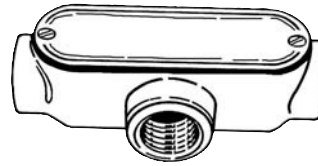
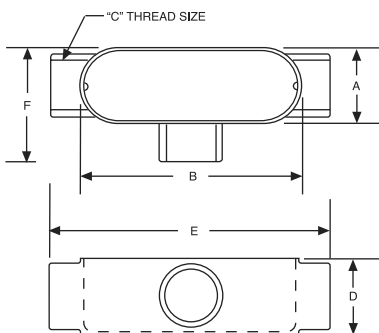
**Aluminum Conduit Bodies with Cover and Gasket**  
**Product Features**

- Assembled with cover and gasket to speed installation — installer has all components needed
- Flat back design for easy mounting close to walls
- Cast of high strength, corrosion and weather resistant aluminum alloy with painted finish
- May be used on aluminum or steel conduit
- Lightweight, makes installation simple
- Unique E-PAK™ packaging serves as a shipping and display carton
- Bell® conduit bodies are UPC-A bar coded for sales and inventory control

**Compliances**

- – Standard 514B
- – C22.2 #18

**TYPE T**



**TYPE T**

**ORDERING INFORMATION - DIMENSIONS**

TYPE T				
CATALOG NUMBER	TRADE SIZE	STD. PKG.	PKG. TYPE	UPC BAR CODE
EAT-1CG	1/2"	12	E-PAK	
EAT-2CG	3/4"	15	E-PAK	
EAT-3CG	1"	5	E-PAK	
EAT-4CG	1-1/4"	5	E-PAK	
EAT-5CG	1-1/2"	5	E-PAK	
EAT-6CG	2"	2	E-PAK	

DIMENSIONS						
CONDUIT SIZE	A	B	C	D	E	F
1/2"	1-5/16"	3-7/8"	1/2"	1-7/16"	4-29/32"	2-1/8"
3/4"	1-1/2"	4-5/8"	3/4"	1-11/16"	5-1/2"	2-11/32"
1"	1-3/4"	5-3/8"	1"	1-15/16"	6-7/16"	2-21/32"
1-1/4"	2-1/2"	6-5/8"	1-1/4"	2-7/8"	8-7/16"	3-19/32"
1-1/2"	2-1/2"	6-5/8"	1-1/2"	2-7/8"	8-7/16"	3-19/32"
2"	3-1/8"	8-1/2"	2"	3-7/16"	10-3/4"	4-1/32"