

**INLINE LANDSCAPE, TYPE 4 AND 12**



**INDUSTRY STANDARDS**

**Solid Door Enclosures:**

UL 508A Listed; Type 3, 4, 12; File No. E61997  
 cUL Listed per CSA C22.2 No. 94; Type 3, 4, 12; File No. E61997

NEMA/EEMAC Type 3, 4, 12  
 CSA File Number 42186: Type 4, 12  
 IEC 60529, IP66

**Window Door Enclosures:**

UL 508A Listed; Type 3, 4, 12; File No. E61997

NEMA/EEMAC Type 3, 4, 12  
 CSA File Number 42186: Type 4, 12  
 IEC 60529, IP66

**APPLICATION**

When applications require mounting electrical components the full width of an enclosure, the landscape orientation of this aesthetic INLINE Enclosure makes it possible. Full-width mounting brackets can be drilled anywhere along their length, providing maximum mounting flexibility.

**SPECIFICATIONS**

- Metric dimensions
- 16 gauge steel
- Seams continuously welded and ground smooth
- External formed body flange channels away liquids
- Large perimeter body opening
- External welded-on mounting brackets for easy installation
- Seamless foam-in-place gasket
- Bonding provision on cover and door
- Hardware kit includes panel mounting screws and grounding hardware
- Removable hinged door
- Self-grounding, slotted quarter-turn latches
- Door opens 180 degrees
- Window door models include flush-mounted 4.8-mm (3/16-in.) clear polycarbonate window

**FINISH**

Textured light-gray RAL 7035 polyester powder coating inside and out

**ACCESSORIES**

- See also Accessories.*
- DIN Rail or Panel-Mounting Brackets
  - DIN3 Type Rails
  - Grounding Kit
  - Lock Inserts
  - Mounting Bracket Kit
  - INLINE Landscape Panels
  - Wing Knob Latch

**MODIFICATION AND CUSTOMIZATION**

Hoffman excels at modifying and customizing products to your specifications. Contact your local Hoffman sales office or distributor for complete information.

**BULLETIN: A54**

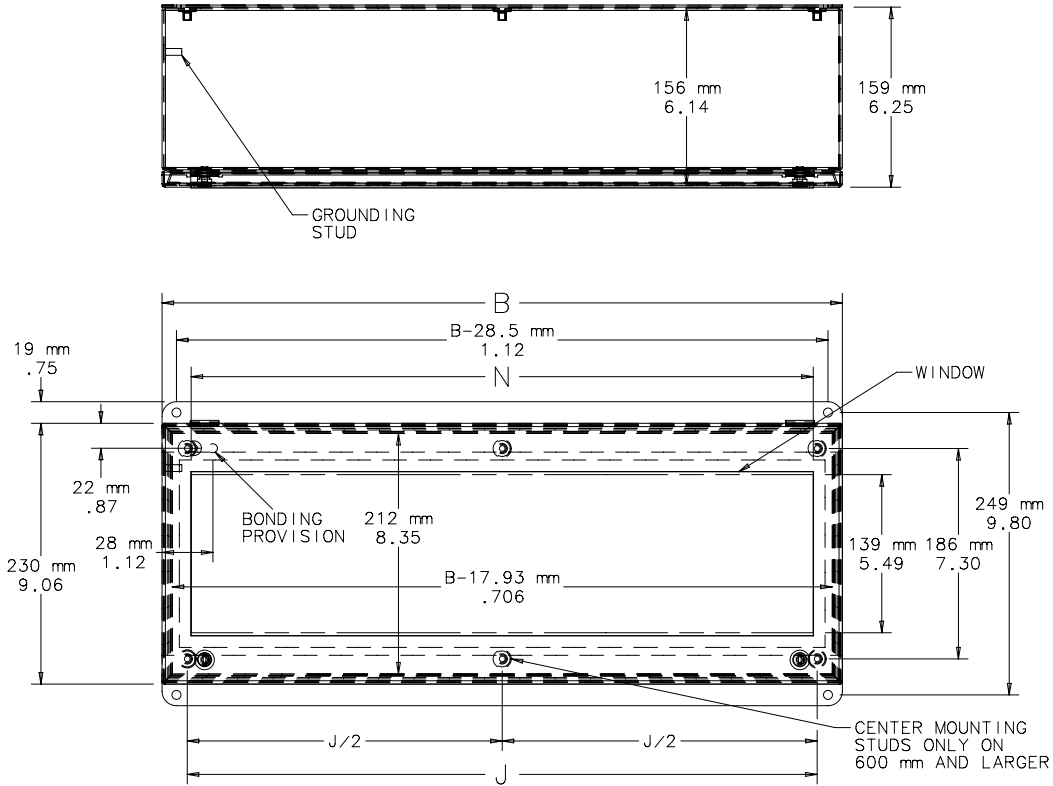
**Standard Product Hinged Solid Door**

Catalog Number	AxBxC mm/in.	Panel	Conductive Panel	Mounting Studs J mm/in.	Clear Space Above Panel mm/in.
LHC233116	230 x 310 x 155 9.06 x 12.20 x 6.10	LP2331	LP2331G	265 10.45	140 5.51
LHC234616	230 x 460 x 155 9.06 x 18.11 x 6.10	LP2346	LP2346G	416 16.36	140 5.51
LHC236016	230 x 600 x 155 9.06 x 23.62 x 6.10	LP2360	LP2360G	556 21.88	140 5.51
LHC237716	230 x 770 x 155 9.06 x 30.31 x 6.10	LP2377	LP2377G	726 28.57	140 5.51
LHC239316	230 x 930 x 155 9.06 x 36.61 x 6.10	LP2393	LP2393G	881 34.67	140 5.51

Enclosures are hinged on "B" side.  
 Purchase panels separately.

Standard Product **Hinged Window Door**

Catalog Number	AxBxC mm/in.	Panel	Conductive Panel	Window Size N mm/in.	Mounting Studs J mm/in.	Clear Space Above Panel mm/in.
LWC233116	230 x 310 x 155 9.06 x 12.20 x 6.10	LP2331	LP2331G	259 10.20	265 10.45	140 5.51
LWC234616	230 x 460 x 155 9.06 x 18.11 x 6.10	LP2346	LP2346G	409 16.11	416 16.36	140 5.51
LWC236016	230 x 600 x 155 9.06 x 23.62 x 6.10	LP2360	LP2360G	549 21.62	556 21.88	140 5.51
LWC237716	230 x 770 x 155 9.06 x 30.31 x 6.10	LP2377	LP2377G	719 28.31	726 28.57	140 5.51
LWC239316	230 x 930 x 155 9.06 x 36.61 x 6.10	LP2393	LP2393G	874 34.42	881 34.67	140 5.51



87565822