

ADE-1F2 - for non-armoured cable

Technical specification



Suitable for the following cable types:

- Non-armoured cable
- Marine shipboard cable; Type P cable
- Tray cable

Provides 25% of cable clamping. As per IEC60079 § A.2.3.2 for group II or III cable glands, "without a clamping device, additional clamping of the cable is needed to ensure that pulling & twisting is not transmitted to the terminations". We recommend using the certified ADE clamping module (page 32).

Operating temperature:

-60°C to +140°C

IMPROVED

Material:

Nickel-plated brass for superior corrosion resistance. 316L stainless steel, bronze and aluminum options available. It is recommended that a suitable lubricant is used on all threads of stainless steel and aluminum versions.

Ingress protection (IP):

IP66 / IP68 according to the method of attachment and the condition of the equipment area, see page 13.

Certifications and compliances:

ATEX certificate no: INERIS12ATEX0032X

Zones 1 and 2, Groups IIA, IIB and IIC

Zones 21 and 22 Groups IIIA, IIIB and IIIC

II2GD / Ex db IIC / Ex eb IIC / Ex tb IIIC

II3G Ex nRc IIC

IECEx certificate no: IECEx INE 12.0025X

Zones 1 and 2, Groups IIA, IIB and IIC

Zones 21 and 22, Groups IIIA, IIIB and IIIC

Ex db IIC / Ex eb IIC / Ex nRc IIC / Ex tb IIIC

Other certificates:

CEPEL 05.0558X

CCoE P360379-1

KOSHA 2015.-BO-0249 to 0256

NANIO TC-RU C-FR.ГБ05.В.00858

NEPSI GYJ13.1082X

SABS MS/15-0314X

Shipping application:

ABS 14-HS1274083-PDA

BV 40910/A0 BV

DNV TAE000010X

Lloyds 11/00072

DTS-01:1991 compliant

UL certification:

3DJN E310130 ; Class I, Zone 1*, AEx e II

ADE sizes 3 to 8, 1/2" to 1 1/4" NPT or ISO 20 to 40 with TC-ER-HL non-armoured cable up to 1" diameter.

3DJN E310130 Class I Zone 2*, AEx e II, Ex e II

ADE sizes 3 to 17, NPT 1/2" to 4" or ISO 20 to 110 with non-armoured cable types ITC, MV, PLTC, TC-ER, TC-ER-HL, TC.

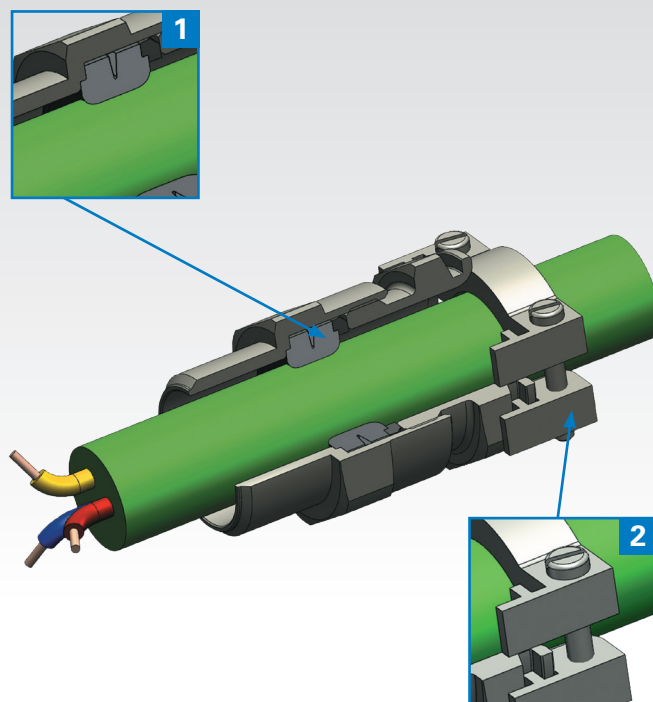
3LRC E314047 Class I Zone 2*, AEx e II, Ex e II

ADE sizes 3 to 17, NPT 1/2" to 4" or ISO 20 to 110 with non-armoured marine cable.

*Can be used in Div.2 provided that the enclosure contains no components that produce arcs or sparks.



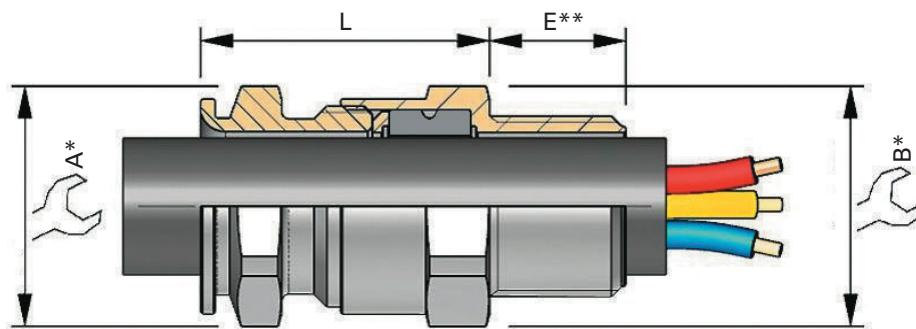
Features and benefits



- 1: Specifically formulated elastomer for IP sealing on outer sheath of cable.
- 2: Additional external cable clamping for strain relief (optional).

ADE-1F2 - order codes and dimensions

Dimensions



* For 'across corners' dimensions, multiply 'across flats' dimensions by 1.1

** For 'E' see thread dimension page 89

| SERIES | THREAD SIZE | CABLE SEALING RANGE | MATERIAL | OPTION |
|--------|-------------|---------------------|----------|--------|
| ADE1 | M25 | 3 | NPN | |

SELECT

0 = XS
1 = S
2 = M
3 = L

SELECT

SELECT

CODES

| | |
|-------|-------------------|
| K1 | Accessories kit 1 |
| K2 | Accessories kit 2 |
| K3 | Accessories kit 3 |
| BLANK | No option |

| | |
|-----|---------------------|
| NPN | Nickel-plated brass |
| SSN | Stainless steel |
| BZN | Bronze |
| ALN | Aluminum |

KIT OPTIONS

| | |
|----|--|
| K1 | Kit 1 contents: • Locknut • Green composite washer |
| K2 | Kit 2 contents: • Locknut • Green composite washer • Earth tag • Shroud |
| K3 | Kit 3 contents: • Locknut • Green composite washer • Earth tag • Serrated washer |

SELECTION TABLE

| SERIES | THREAD SIZE | THREAD SIZE CODE | THREAD SIZE | THREAD SIZE CODE | CABLE SEALING RANGE |
|--------|-------------|------------------|-------------|------------------|---------------------|
| | | | | | |
| | | | ISO | NPT | |
| ADE1 | 12* | M12 | 1/4** | N025 | 3 |
| ADE1 | 16* | M16 | 3/8** | N038 | 2 |
| ADE1 | 16* | M16 | 3/8** | N038 | 3 |
| ADE1 | 20 | M20 | 1/2" | N050 | 0 |
| ADE1 | 20 | M20 | 1/2" | N050 | 1 |
| ADE1 | 20 | M20 | 1/2" | N050 | 2 |
| ADE1 | 20 | M20 | 1/2" | N050 | 3 |
| ADE1 | 25 | M25 | 3/4" | N075 | 1 |
| ADE1 | 25 | M25 | 3/4" | N075 | 2 |
| ADE1 | 25 | M25 | 3/4" | N075 | 3 |
| ADE1 | 32 | M32 | 1" | N100 | 3 |
| ADE1 | 40 | M40 | 1 1/4" | N125 | 2 |
| ADE1 | 40 | M40 | 1 1/4" | N125 | 3 |
| ADE1 | 50 | M50 | 1 1/2" | N150 | 1 |
| ADE1 | 50 | M50 | 2" | N200 | 2 |
| ADE1 | 63 | M63 | 2" | N200 | 3 |
| ADE1 | 75 | M75 | 2 1/2" | N250 | 3 |
| ADE1 | 90 | M90 | 3" | N300 | 2 |
| ADE1 | 90 | M90 | 3" | N300 | 3 |
| ADE1 | 110 | M110 | 3 1/2" | N350 | 2 |
| ADE1 | 110 | M110 | 4" | N400 | 3 |

DIMENSIONS

| CABLE SEALING RANGE ISO/(NPT) | A | B | L (LENGTH) |
|-------------------------------|-----|-----|------------|
| | | | |
| OUTER SHEATH MIN - MAX | | | |
| 4.5 - 8.0 | 17 | 17 | 25.0 |
| 4.5 - 8.5 | 17 | 19 | 25.0 |
| 7.0 - 12.0 | 19 | 19 | 27.5 |
| 2.8 - 5.5 | 15 | 24 | 24.0 |
| 4.5 - 8.5 | 17 | 24 | 25.0 |
| 7.0 - 12.0 | 19 | 24 | 27.5 |
| 10.0 - 16.0 (15.5) | 24 | 24 | 32.0 |
| 7.0 - 12.0 | 19 | 30 | 27.5 |
| 10.0 - 16.0 | 24 | 30 | 32.0 |
| 13.5 - 20.5 | 30 | 30 | 36.5 |
| 18.0 - 27.5 (26.0) | 41 | 41 | 46.0 |
| 18.0 - 27.5 (26.0) | 48 | 48 | 50.0 |
| 23.0 - 34.0 | 48 | 48 | 50.0 |
| 29.0 - 41.0 | 55 | 55 | 52.0 |
| 35.0 - 45.0 (48.0) | 64 | 64 | 56.5 |
| 42.0 - 56.0 (53.0) | 72 | 72 | 60.0 |
| 50.0 - 65.0 (62.5) | 85 | 85 | 67.5 |
| 58.0 - 74.0 | 95 | 95 | 69.0 |
| 66.0 - 83.0 (78.0) | 110 | 110 | 80.0 |
| 75.0 - 93.0 (92.0) | 120 | 120 | 80.0 |
| 85.0 - 104.0 | 135 | 135 | 90.0 |

| ADE GLAND SIZE | CATALOG NUMBER ISO | CATALOG NUMBER NPT |
|----------------|--------------------|--------------------|
| 4 | ADE1M123NPN | ADE1N0253NPN |
| 4 | ADE1M162NPN | ADE1N0382NPN |
| 5 | ADE1M163NPN | ADE1N0383NPN |
| 3 | ADE1M200NPN | ADE1N0500NPN |
| 4 | ADE1M201NPN | ADE1N0501NPN |
| 5 | ADE1M202NPN | ADE1N0502NPN |
| 6 | ADE1M203NPN | ADE1N0503NPN |
| 5 | ADE1M251NPN | ADE1N0751NPN |
| 6 | ADE1M252NPN | ADE1N0752NPN |
| 7 | ADE1M253NPN | ADE1N0753NPN |
| 8 | ADE1M323NPN | ADE1N1003NPN |
| 8 | ADE1M402NPN | ADE1N1252NPN |
| 9 | ADE1M403NPN | ADE1N1253NPN |
| 10 | ADE1M501NPN | ADE1N1501NPN |
| 11 | ADE1M502NPN | ADE1N2002NPN |
| 12 | ADE1M633NPN | ADE1N2003NPN |
| 13 | ADE1M753NPN | ADE1N2503NPN |
| 14 | ADE1M902NPN | ADE1N3002NPN |
| 15 | ADE1M903NPN | ADE1N3003NPN |
| 16 | ADE1M1102NPN | ADE1N3502NPN |
| 17 | ADE1M1103NPN | ADE1N4003NPN |

* Not UL certified. All dimensions in mm. Above catalog numbers are for nickel-plated brass; refer to order code diagram for other options.
For Group I certification, see page 80.