

BALDOR® • ***RELIANCE***

Product Information Packet

CWDL3509

1HP,3450RPM,1PH,60HZ,56C,3520L,TEFC,F1

Part Detail							
Revision:	AH	Status:	PRD/A	Change #:		Proprietary:	No
Type:	AC	Elec. Spec:	35WGX964	CD Diagram:	CD0001	Mfg Plant:	
Mech. Spec:	35T985	Layout:	35LYT985	Poles:	02	Created Date:	06-22-2007
Base:	RG	Eff. Date:	09-11-2017	Leads:	4#16 A PH,2#18 B PH		

Specs			
Catalog Number:	CWDL3509	Insulation Class:	F
Enclosure:	TEFC	Inverter Code:	Not Inverter
Frame:	56C	KVA Code:	K
Frame Material:	Steel	Lifting Lugs:	No Lifting Lugs
Output @ Frequency:	1.000 HP @ 60 HZ	Locked Bearing Indicator:	Locked Bearing
Synchronous Speed @ Frequency:	3600 RPM @ 60 HZ	Motor Lead Quantity/Wire Size:	4 @ 16 AWG, A PH
Voltage @ Frequency:	230.0 V @ 60 HZ	Motor Lead Exit:	Ko Box
	115.0 V @ 60 HZ	Motor Lead Termination:	Flying Leads
XP Class and Group:	None	Motor Type:	3520L
XP Division:	Not Applicable	Mounting Arrangement:	F1
Agency Approvals:	CSA	Power Factor:	82
	UR	Product Family:	Wash Down
Auxillary Box:	No Auxillary Box	Pulley End Bearing Type:	Sealed Bearing
Auxillary Box Lead Termination:	None	Pulley Face Code:	C-Face
Base Indicator:	Rigid	Pulley Shaft Indicator:	Standard
Bearing Grease Type:	Polyrex EM (-20F +300F)	Rodent Screen:	None
Blower:	None	RoHS Status:	ROHS COMPLIANT
Current @ Voltage:	11.800 A @ 115.0 V	Shaft Extension Location:	Pulley End

	5.900 A @ 230.0 V	Shaft Ground Indicator:	No Shaft Grounding
	6.100 A @ 208.0 V	Shaft Rotation:	Reversible
Design Code:	N	Shaft Slinger Indicator:	Shaft Slinger
Drip Cover:	No Drip Cover	Speed Code:	Single Speed
Duty Rating:	CONT	Motor Standards:	NEMA
Electrically Isolated Bearing:	Not Electrically Isolated	Starting Method:	Direct on line
Feedback Device:	NO FEEDBACK	Thermal Device - Bearing:	None
Front Face Code:	Standard	Thermal Device - Winding:	None
Front Shaft Indicator:	None	Vibration Sensor Indicator:	No Vibration Sensor
Heater Indicator:	No Heater	Winding Thermal 1:	None
		Winding Thermal 2:	None

Nameplate NP1496L										
CAT.NO.	CWDL3509									
SPEC.	35T985X964G1									
HP	1									
VOLTS	115/230									
AMP	11.8/5.9									
RPM	3450									
FRAME	56C				HZ	60			PH	1
SER.F.	1.25		CODE	K	DES	N		CLASS	F	
NEMA-NOM-EFF	68		PF	82						
RATING	40C AMB-CONT									
CC									USABLE AT 208V	6.1
DE	6205				ODE	6203				
ENCL	TEFC		SN							
	SFA 14/7									

AC Induction Motor Performance Data

Record # 20606 - Typical performance - not guaranteed values

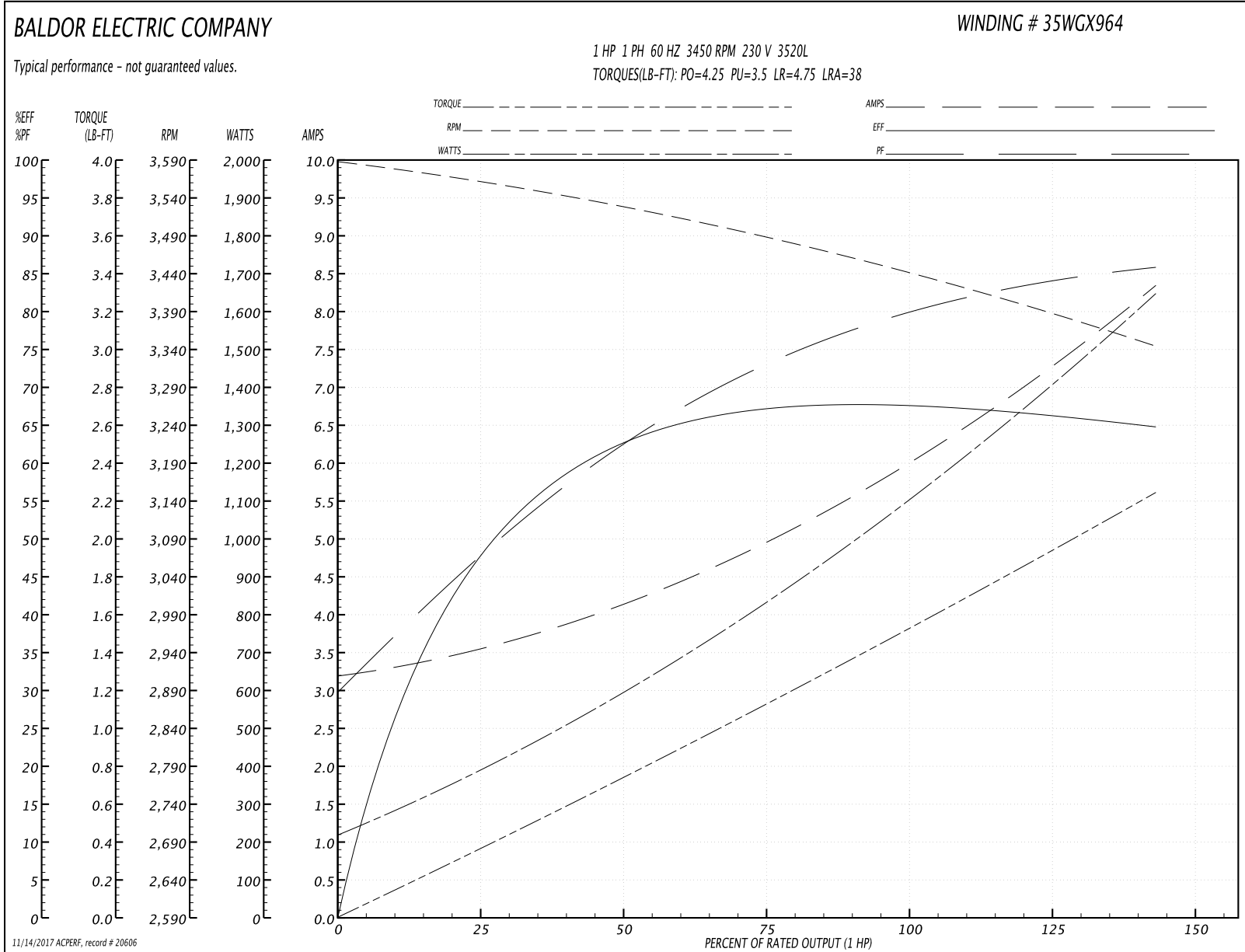
Winding: 35WGX964-R004	Type: 3520L	Enclosure: TEFC
-------------------------------	--------------------	------------------------

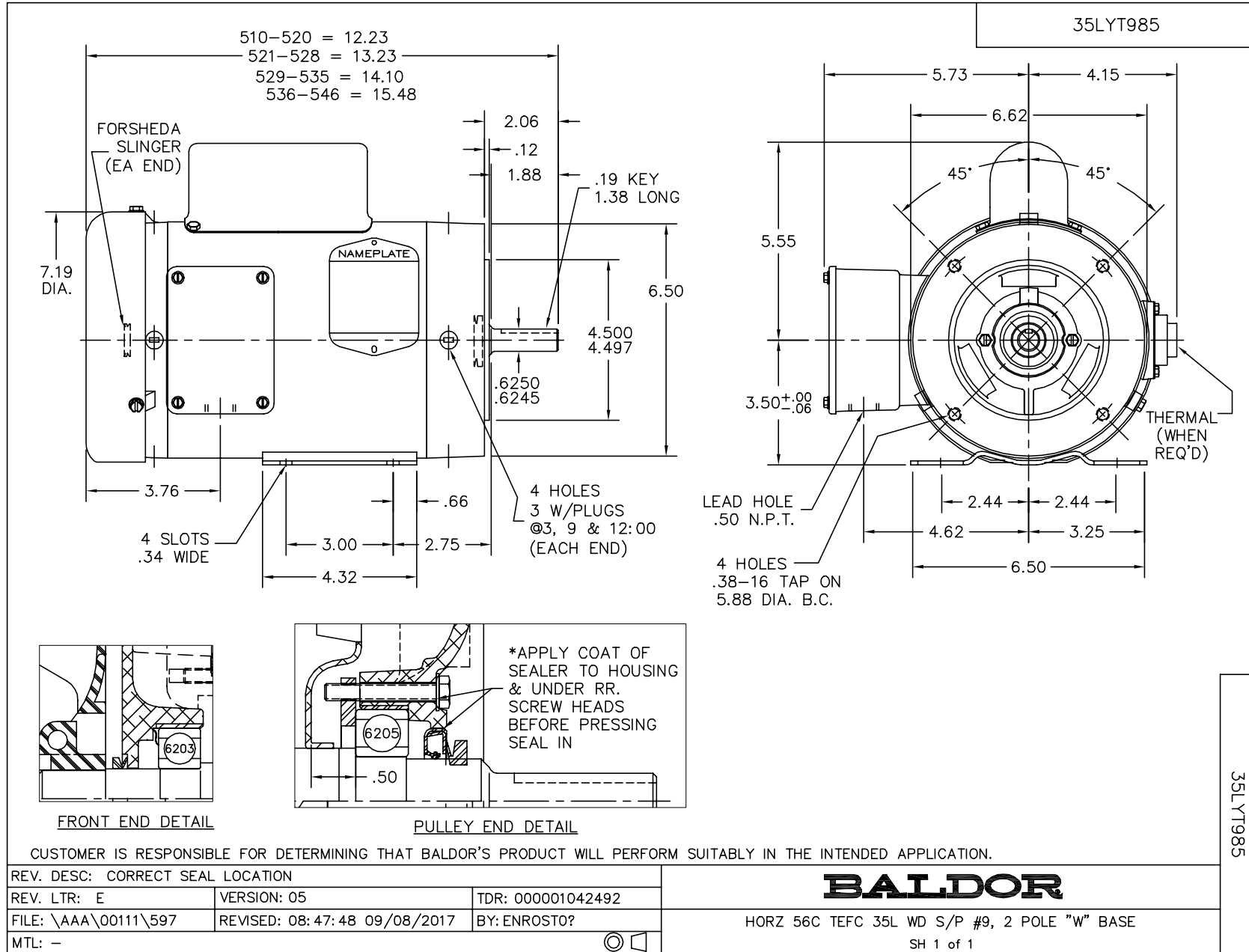
Nameplate Data				230 V, 60 Hz: High Voltage Connection	
Rated Output (HP)	1			Full Load Torque	1.5 LB-FT
Volts	115/230			Start Configuration	direct on line
Full Load Amps	11.8/5.9			Breakdown Torque	4.25 LB-FT
R.P.M.	3450			Pull-up Torque	3.5 LB-FT
Hz	60	Phase	1	Locked-rotor Torque	4.75 LB-FT
NEMA Design Code	N	KVA Code	K	Starting Current	38 A
Service Factor (S.F.)	1.25			No-load Current	3.2 A
NEMA Nom. Eff.	68	Power Factor	82	Line-line Res. @ 25°C	2 Ω A Ph 1.77 Ω B Ph
Rating - Duty	40C AMB-CONT			Temp. Rise @ Rated Load	72°C
S.F. Amps	14/7			Temp. Rise @ S.F. Load	90°C

Load Characteristics 230 V, 60 Hz, 1 HP

% of Rated Load	25	50	75	100	125	150	S.F.
Power Factor	47	64	72	80	84	86	84
Efficiency	50	61	67	68	67	64.5	67
Speed	3560	3525	3485	3450	3400	3340	3400
Line amperes	3.5	4.2	5	5.9	7	8.4	7

Performance Graph at 230V, 60Hz, 1.0HP Typical performance - Not guaranteed values





CD0001



NOTES:

1. STANDARD ROTATION IS CCW FACING END OPPOSITE SHAFT EXTENSION.
2. OPTIONAL THERMOSTAT IS PROVIDED WHEN SPECIFIED.
3. MULTIPLE CAPACITORS ARE CONNECTED IN PARALLEL UNLESS OTHERWISE SPECIFIED.
4. LEAD COLORS ARE OPTIONAL. LEADS MUST ALWAYS BE NUMBERED AS SHOWN.

CD0001

REV. DESC: REVISE TO SHOW OPTIONAL COLORS			
REV. LTR: D	BY: JLP	REVISED: 04/08/99 1:16	TDR: 0178636
100000		FILE: AAA00007405	MDL: -
		MTL: -	

BALDOR ELECTRIC Co.

TYPE L, DV, REV, 6 LEADS