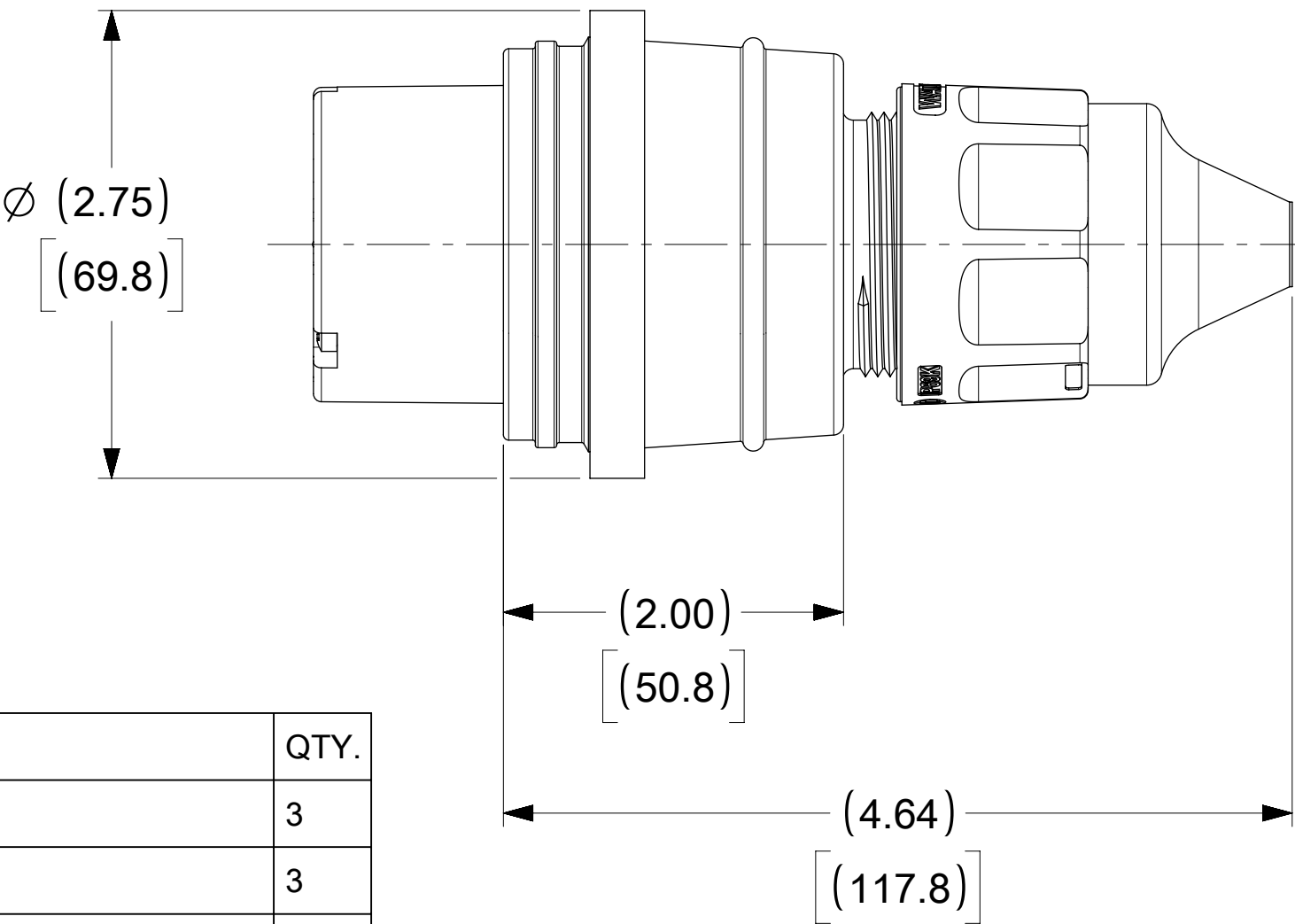
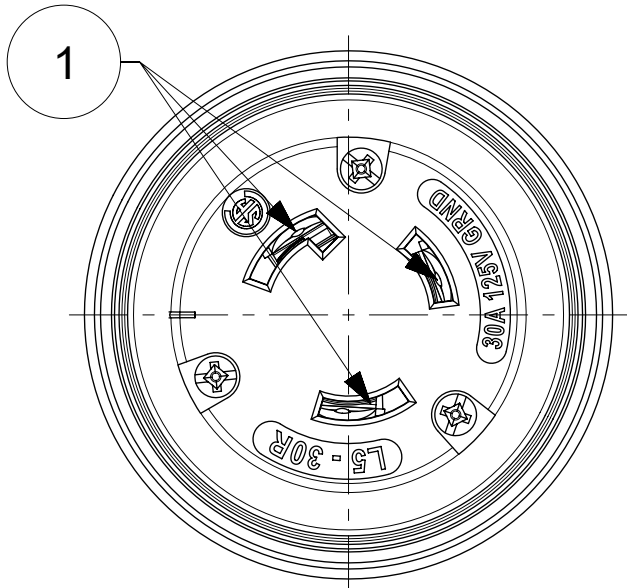
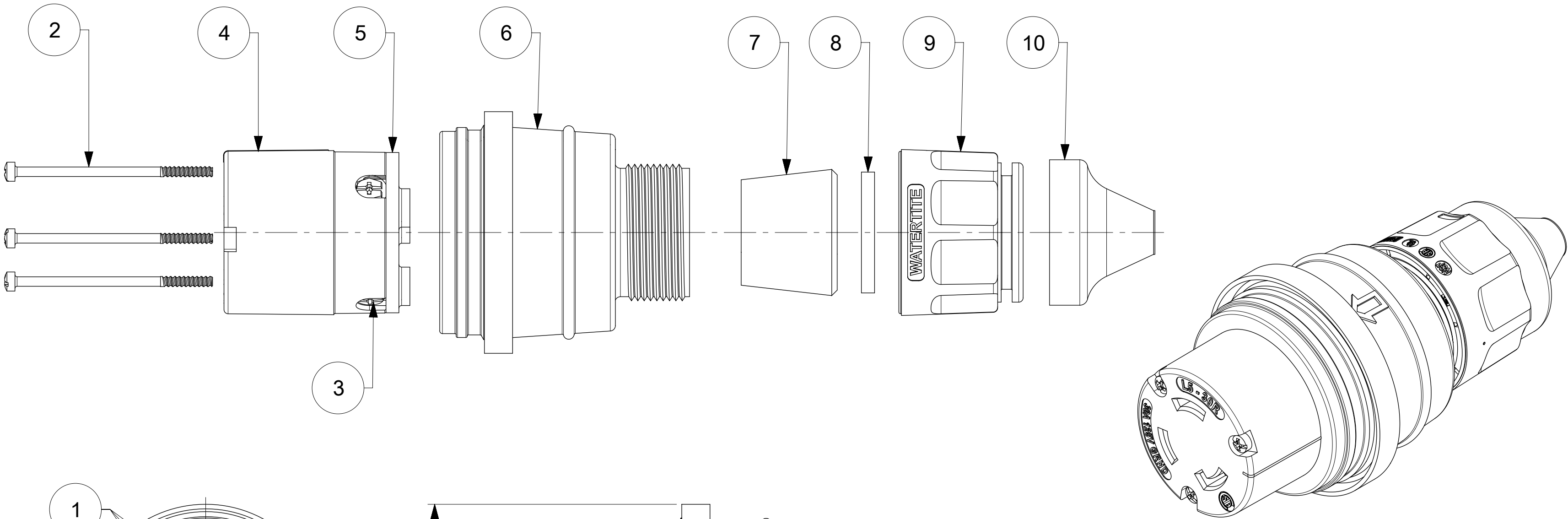


ORDER NO.	WOODHEAD NO.	COLOR
130147-0095	29W47MB	YELLOW



NOTE:
1. "ACCEPT CABLE RANGE FROM .562" TO 1.00"

ITEM NO.	DESCRIPTIONS	MATERIAL	QTY.
1	BLADE	BRASS, NICKEL PLATED	3
2	RETAINING SCREWS	STAINLESS STEEL	3
3	CLAMP AND TERMINAL SCREW ASSY	BRASS, ZINC PLATED	3
4	INSERT	NYLON	1
5	TERMINAL COVER	POLYCARBONATE	1
6	HOUSING	SILICON WITH NYLON THREAD	1
7	GROMMET	RUBBER	4
8	FRICTION RING	NYLON	1
9	COMPRESSION NUT	NYLON	1
10	CABLE GLOVE	SILICON	1

DOCUMENT STATUS	P1	RELEASE DATE	2019/10/16	04:08:58
-----------------	----	--------------	------------	----------

SYMBOLS		THIS DRAWING CONTAINS INFORMATION THAT IS PROPRIETARY TO MOLEX ELECTRONIC TECHNOLOGIES, LLC AND SHOULD NOT BE USED WITHOUT WRITTEN PERMISSION													
DIMENSION UNITS		SCALE		CURRENT REV DESC:				<div>molex</div>							
INCH[MM]		NTS													
GENERAL TOLERANCES (UNLESS SPECIFIED)															
		MM INCH						WATERTITE CONNECTOR MOTORBASE 2P3W L5-30							
4 PLACES		±	±												
3 PLACES		±	±	EC NO: 617537				PRODUCT CUSTOMER DRAWING							
2 PLACES		±	±	DRWN: SRPATIL 2019/02/15											
1 PLACE		±	±	CHK'D: DNGUYEN62 2019/05/30											
0 PLACES		±	±	APPR: HKNEELAND 2019/10/16				DOCUMENT NUMBER							
ANGULAR TOL		±	°	INITIAL REVISION:								1301470095		DOC TYPE	
DRAFT WHERE APPLICABLE MUST REMAIN WITHIN DIMENSIONS		THIRD ANGLE PROJECTION		DRAWING		SERIES		MATERIAL NUMBER		CUSTOMER					
				C-SIZE		130147		SEE TABLE		GENERAL MARKET		1 OF 1			

12	11	10	9	8	7	6	5	4	3	2	1
----	----	----	---	---	---	---	---	---	---	---	---