

# **BALDOR® • RELIANCE**

## **Product Information Packet**

### **EM4407TR-4**

**200HP, 1785RPM, 3PH, 60HZ, 447T, A44120M, TEFC**

## Part Detail

Revision:	L	Status:	PRD/A	Change #:		Proprietary:	No
Type:	AC	Elec. Spec:	A44WG0690	CD Diagram:	416820-036	Mfg Plant:	
Mech. Spec:		Layout:	617427-002	Poles:	04	Created Date:	08-10-2012
Base:		Eff. Date:	10-30-2017	Leads:	3#1/0 (02 per group)		

## Specs

Catalog Number:	EM4407TR-4	Heater Indicator:	No Heater
Enclosure:	TEFC	Insulation Class:	F
Frame:	447T	Inverter Code:	Inverter Ready
Frame Material:	Iron	KVA Code:	G
Output @ Frequency:	200.000 HP @ 60 HZ	Lifting Lugs:	No Lifting Lugs
Synchronous Speed @ Frequency:	1800 RPM @ 60 HZ	Motor Lead Quantity/Wire Size:	6 @ 1/0 AWG
Voltage @ Frequency:	460.0 V @ 60 HZ	Motor Type:	A44120M
XP Class and Group:	None	Mounting Arrangement:	F1
XP Division:	Not Applicable	Power Factor:	87
Agency Approvals:	CCSA US	Pulley End Bearing Type:	Roller
	CSA EEV	Pulley Face Code:	Standard
Auxillary Box:	No Auxillary Box	Shaft Ground Indicator:	No Shaft Grounding
Base Indicator:	Rigid	Shaft Rotation:	Reversible
Bearing Grease Type:	Polyrex EM (-20F +300F)	Shaft Slinger Indicator:	No Slinger
Current @ Voltage:	222.000 A @ 460.0 V	Speed Code:	Single Speed
Design Code:	B	Motor Standards:	Other
Drip Cover:	No Drip Cover	Starting Method:	Direct on line
Duty Rating:	CONT	Thermal Device - Bearing:	None

<b>Feedback Device:</b>	NO FEEDBACK	<b>Thermal Device - Winding:</b>	None
-------------------------	-------------	----------------------------------	------

## Nameplate NP2383L

CAT.NO.	EM4407TR-4	SPEC NO.	P44G3913
HP	200	AMPS	222
FRAME	447T	RPM	1785
DRIVE END BEARING	110RU02M30X	HZ	60
OPP D.E. BEARING	90BC03J30X	AMB	40
SER.NO.		SF	1.15
		INSUL.CLASS	F
		PHASE	3
		DUTY	CONT
		TYPE	P
		ENCL	TEFC
		CODE	G
		POWER FACTOR	87
		NEMA-NOM-EFFICIENCY	96.2
		MAX CORR KVAR	32.0
		GUARANTEED EFFICIENCY	95.4
NEMA NOM/CSA QUOTED EFF		MOTOR WEIGHT	

Nameplate NP2496L		
MOBIL SHC -220 GREASE		

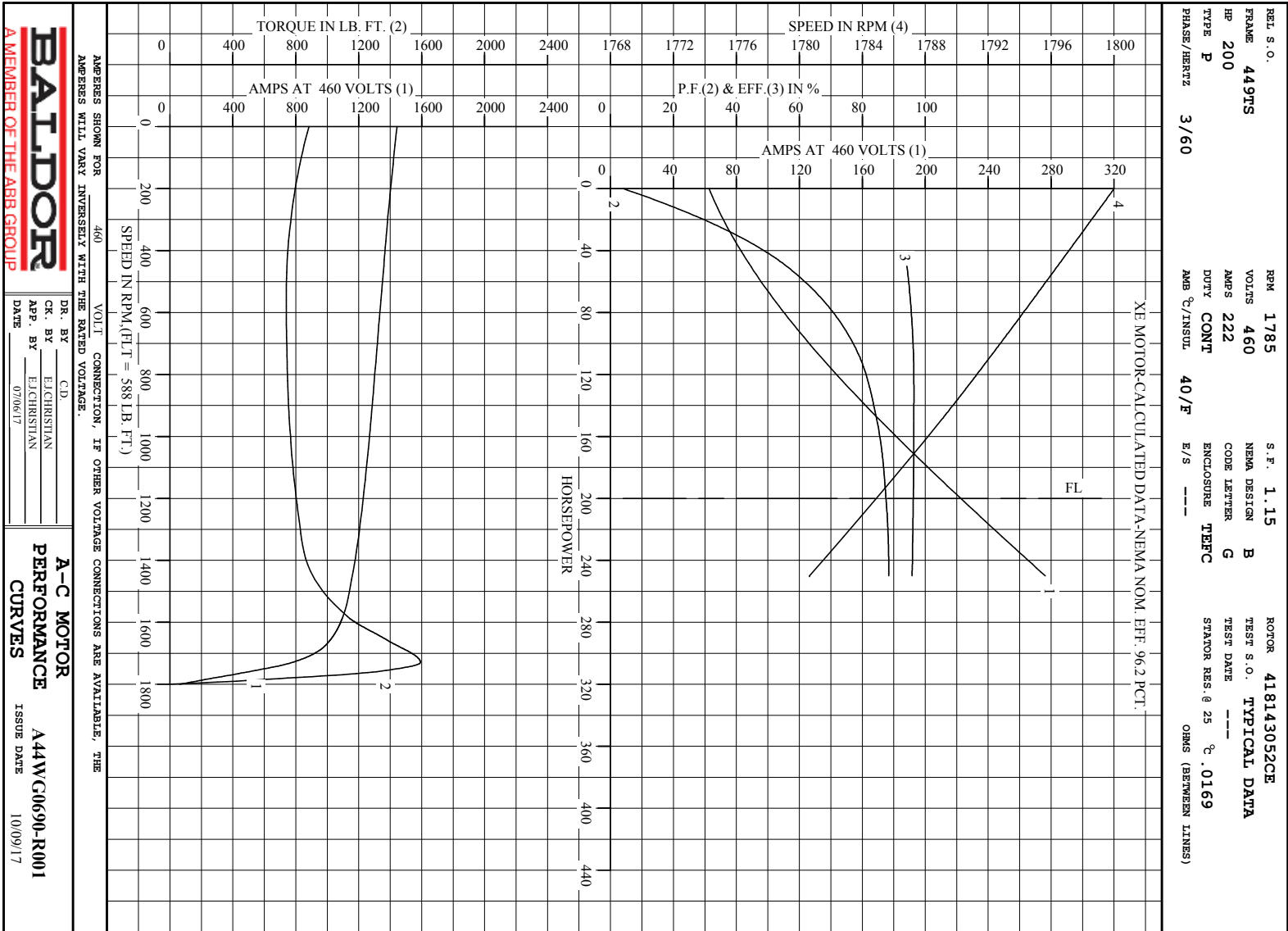
REL. S.O.	FRAME	HP	TYPE	PHASE/ HERTZ	RPM	VOLTS
	449TS	200	P	3/60	1785	460
AMPS	DUTY	AMB <sup>°C</sup> / INSUL.	S.F.	NEMA DESIGN	CODE LETTER	ENCL.
222	CONT	40/F	1.15	B	G	TEFC
E/S	ROTOR	TEST S.O.	TEST DATE	STATOR RES. @25 <sup>°C</sup> OHMS (BETWEEN LINES)		
---	418143052CE	---	---	.0169		
PERFORMANCE						
LOAD	HP	AMPERES	RPM	POWER FACTOR	% EFFICIENCY	
NO LOAD	0	62.7	1800	4.06	0	
1/4	50.0	88.9	1796	55.9	94.2	
2/4	100	126	1793	77.1	96.2	
3/4	150	172	1789	84.7	96.4	
4/4	200	222	1785	87.5	96.2	
5/4	250	276	1781	88.4	95.8	
SPEED TORQUE						
	RPM	TORQUE % FULL LOAD	TORQUE LB.-FT.	AMPERES		
LOCKED ROTOR	0	150	883	1443		
PULL UP	540	126	740	1345		
BREAKDOWN	1730	271	1593	777		
FULL LOAD	1785	100	588	222		

AMPERES SHOWN FOR 460. VOLT CONNECTION. IF OTHER VOLTAGE CONNECTIONS ARE AVAILABLE, THE AMPERES WILL VARY INVERSELY WITH THE RATED VOLTAGE

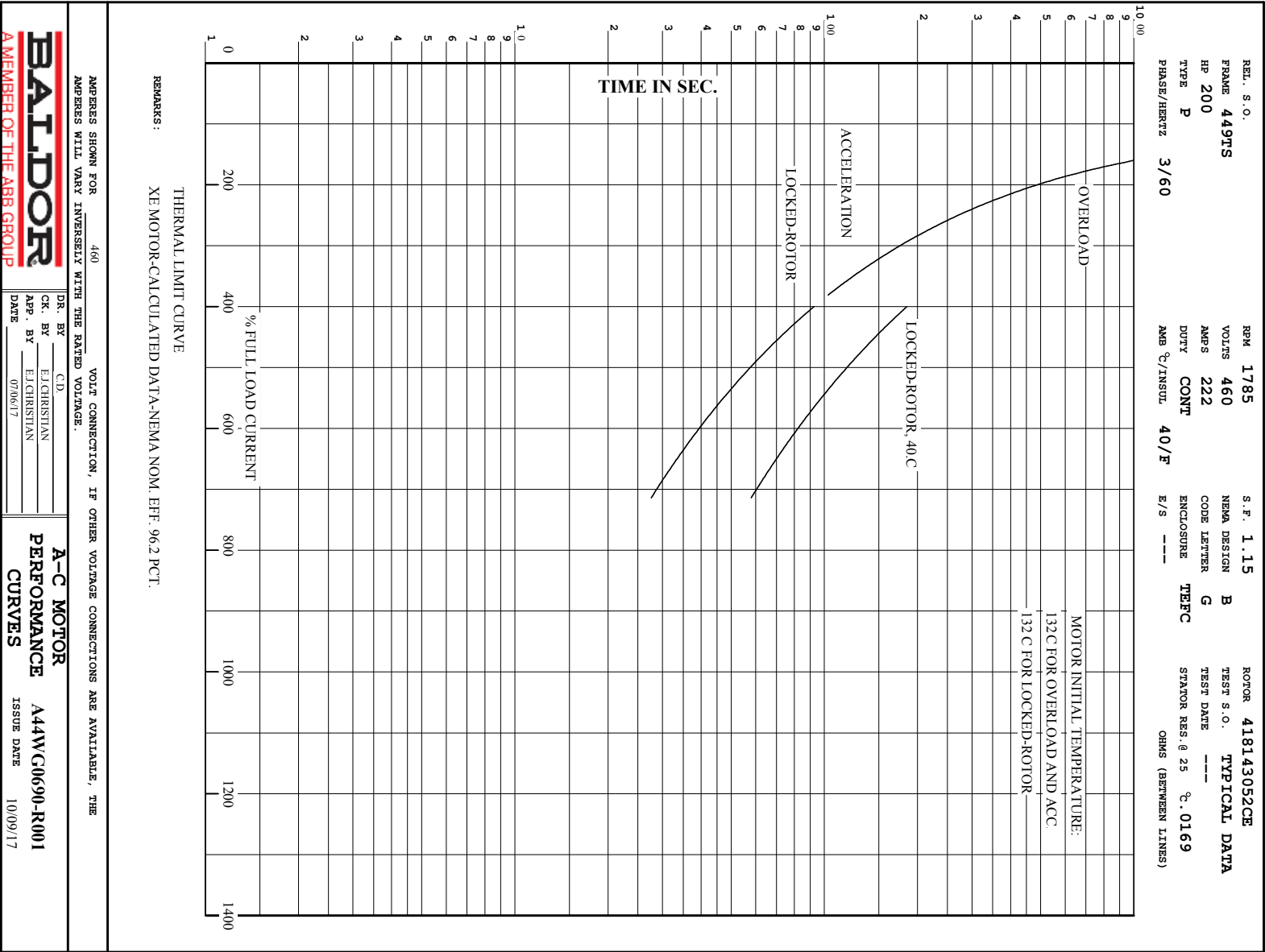
REMARKS: TYPICAL DATA  
XE MOTOR-CALCULATED DATA-NEMA NOM. EFF. 96.2 PCT.

<b>BALDOR</b> A MEMBER OF THE ABB GROUP	DR. BY	C.D.
	CK. BY	E.J. CHRISTIAN
	APP. BY	E.J. CHRISTIAN
	DATE	07/06/17

A-C MOTOR	A44WG0690-R001
PERFORMANCE DATA	ISSUE DATE 10/09/17



Printed on 10/9/17 11:58 @ bengap01.baldor.com





# DUTY MASTER ALTERNATING CURRENT MOTORS

## SQUIRREL-CAGE INDUCTION

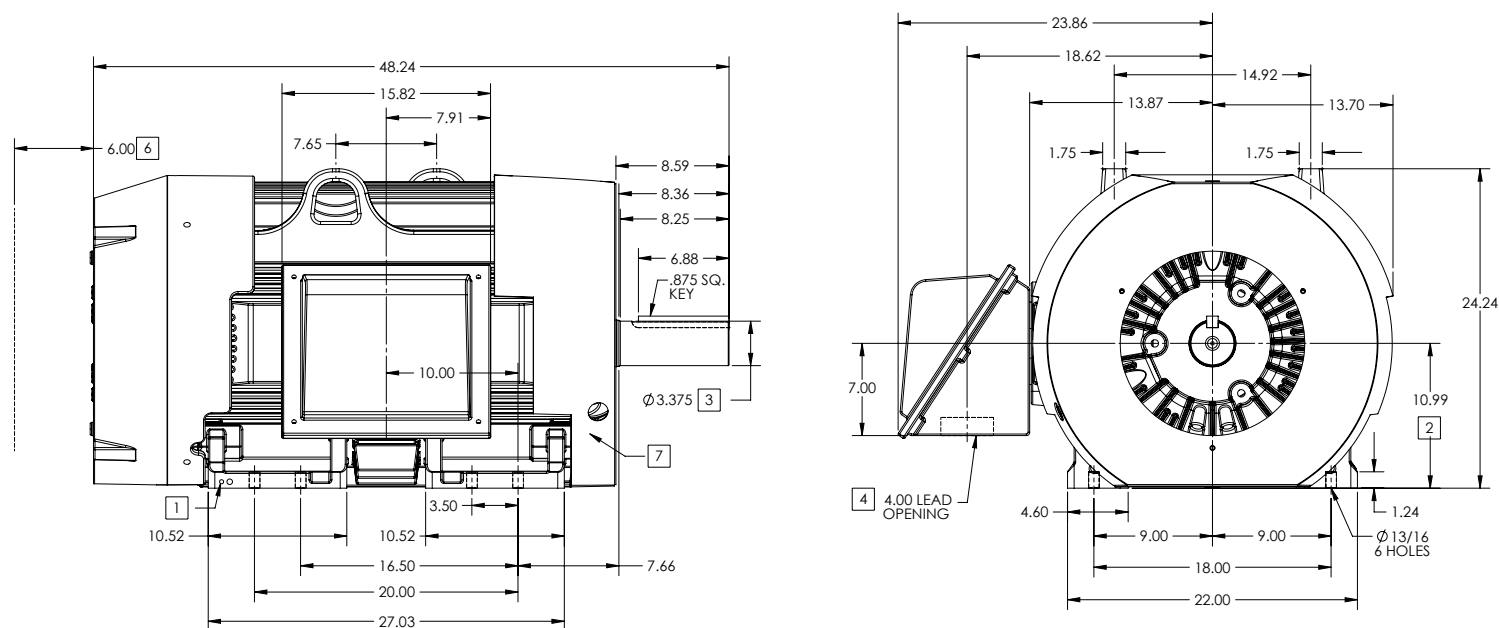
ENCLOSURE: TOTALLY ENCLOSED

FRAME G447T ABOVE NEMA RATINGS

COOLING: FAN COOLED

MOUNTING: FOOT

INCLUDES 445T FRAME MOUNTING HOLES



1. GROUND HOLES QTY 1 1/2-13 TAP; QTY 1 3/8-16 TAP
2. VARIES  $\pm .00$ ,  $-.06$
3. VARIES  $\pm .000$ ,  $-.001$
4. ON STANDARD MOTORS THIS IS CONDUIT SIZE. ON XT AND CORROSION PROOF MOTOR THIS IS PIPE TAP.
5. MOTOR WEIGHTS MAY VARY BY 15% DEPENDING ON RATING.
6. OBSTRUCTION MUST NOT ENCR OACH ON AIR INLET.
7. AIR DEFLECTOR INSTALLED WHEN REQUIRED.

CONDUIT BOX LOCATED ON OPPOSITE SIDE WHEN F-2.  
IF MOUNTING CLEARANCE DETAILS ARE REQUIRED, CONSULT FACTORY.  
MAXIMUM PERMISSIBLE SHAFT RUNOUT WHEN MEASURED AT END OF  
STANDARD SHAFT EXTENSION IS .003" T.I.R. TO 5 INCH DIA.

**[5] WEIGHT (LBS): 2515**

DRIVE END AIR DEFLECTOR IS ONLY INCLUDED WHEN NECESSARY.

DIMENSIONS ARE IN INCHES; SEE SHEET 2 FOR DIMENSIONS IN MILLIMETERS

CUSTOMER IS RESPONSIBLE FOR DETERMINING THAT MOTOR PERFORMANCE IS SUITABLE IN THE APPLICATION.

REV. A	VERSION: 01	REVISED: 08/25/13 02/15/2013	TDR: 000000786306
MODEL NO. 617427-002	BY: MGHWC	Material:	REF:

**BALDOR**

G447T/445T STD - FOOTED - SIDE/CENTER C/B

SHEET NUMBER  
1 OF 2

0007-27-119

# DUTY MASTER ALTERNATING CURRENT MOTORS

## SQUIRREL-CAGE INDUCTION

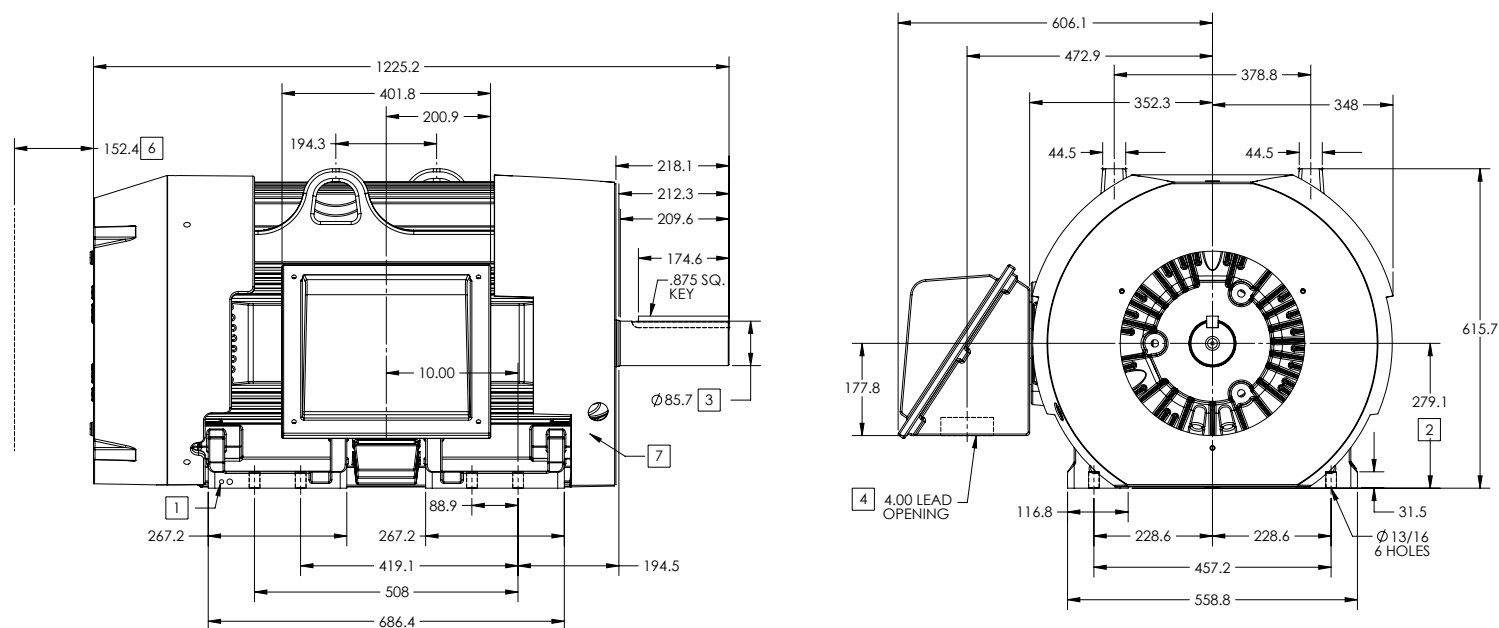
ENCLOSURE: TOTALLY ENCLOSED

FRAME G447T ABOVE NEMA RATINGS

COOLING: FAN COOLED

MOUNTING: FOOT

INCLUDES 445T FRAME MOUNTING HOLES



1. GROUND HOLES QTY 1 1/2-13 TAP; QTY 1 3/8-16 TAP
2. VARIES +.00,-.06
3. VARIES +.000,-.001
4. ON STANDARD MOTORS THIS IS CONDUIT SIZE. ON XT AND CORROSION PROOF MOTOR THIS IS PIPE TAP.
5. MOTOR WEIGHTS MAY VARY BY 15% DEPENDING ON RATING.
6. OBSTRUCTION MUST NO ENCROACH ON AIR INLET.
7. AIR DEFLECTOR INSTALLED WHEN REQUIRED.

CONDUIT BOX LOCATED ON OPPOSITE SIDE WHEN F-2.  
IF MOUNTING CLEARANCE DETAILS ARE REQUIRED, CONSULT FACTORY.  
MAXIMUM PERMISSIBLE SHAFT RUNOUT WHEN MEASURED AT END OF  
STANDARD SHAFT EXTENSION IS .08 MM T.I.R. TO 127 MM DIA.

**[5] WEIGHT (KGS): 1140**

DRIVE END AIR DEFLECTOR IS ONLY INCLUDED WHEN NECESSARY.

DIMENSIONS ARE IN MILLIMETERS; SEE SHEET 1 FOR DIMENSIONS IN INCHES

CUSTOMER IS RESPONSIBLE FOR DETERMINING THAT MOTOR PERFORMANCE IS SUITABLE IN THE APPLICATION.

REV. A	VERSION: 01	REVISED: 08/25/13 02/15/2013	TDR: 000000786306
MODEL NO. 617427-002	BY: MGHWC	Material:	REF:

**BALDOR**

G447T/445T STD - FOOTED - SIDE/CENTER C/B

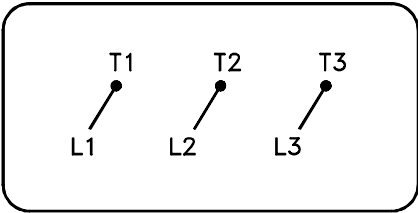
416820-036

A-C MOTOR

CONNECTION DIAGRAM

STANDARD 3 LEAD

CONNECTED



(N.P. 1575-BA)

416820-036

REV. DESC: LOADED TO BUS, C/R 335225			<b>BALDOR</b>
REV. LTR: -	VERSION: 00	TDR: 000000538207	
FILE: \MGA\00000\682		REVISED: 11: 54: 06 04/30/2010	CONN DIAG - STANDARD 3 LEAD
MTL: -		BY: RAGRA	SH 1 of 1