

Hex Reducing Bushings & Bushed Conduit Nipples

Threaded for Rigid Conduit & IMC

Type 300R

Provided with hex shoulder

Use:

To reduce a threaded conduit entry into a smaller trade size.

Material/Finish:

Malleable Iron/Zinc Electroplated

Third Party Certification:



UL Listed: E-11853



CSA Certified: 009795

Applicable Third Party Standards:

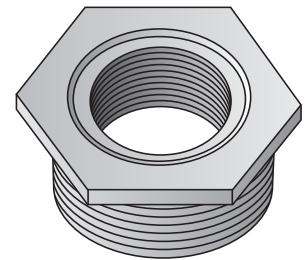
UL Standard: 514B

CSA Standard: C22.2 No. 18

Fed. Spec: W-F-408E

NEMA: FB-1

Trade Size (inches)	Catalog Number	Dimensions in Inches		
		Max. Dim. Across Corners	Thread Length	Flange Thickness
½ - ¾	320-R	1⅞	½	⅜
¾ - 1	321-R	1⅞	⅝	⅜
1 - ¾	322-R	1⅞	⅝	⅜
1 - 1	323-R	1⅞	1⅞	⅜
1¼ - ½	324-R	1⅞	¾	⅜
1¼ - ¾	325-R	1⅞	¾	⅜
1¼ - 1	326-R	1⅞	¾	⅜
1½ - 1¼	327-R	2⅞	1⅞	⅜
1½ - 1	328-R	2⅞	1⅞	⅜
1½ - ¾	329-R	2⅞	1⅞	⅜
1½ - 1	330-R	2⅞	1⅞	⅜
2 - 1½	331-R	2⅞	1⅞	⅜
2 - 1¼	332-R	2⅞	1⅞	⅜
2 - 1	333-R	2⅞	1⅞	⅜
2 - ¾	334-R	2⅞	1⅞	⅜
2 - ½	335-R	2⅞	1⅞	⅜
2½ - 2	336-R	3⅞	1⅞	⅜
2½ - 1½	337-R	3⅞	1⅞	⅜
2½ - 1	339-R	3⅞	1⅞	⅜
3 - 1½	340-R	3⅞	1⅞	⅜
3 - 2	341-R	3⅞	1⅞	⅜
3 - 2½	342-R	3⅞	1⅞	⅜
3½ - 3	349-R	4⅞	1½	⅜
3½ - 2½	350-R	4⅞	1½	⅜
4 - 2½	355-R	5⅞	1⅞	⅜
4 - 3	356-R	5⅞	1¼	⅜
4 - 3½	357-R	5⅞	1¼	⅜



Type 300R

Type 7

Bushed Conduit Nipples

Use:

Use through knockout to connect box to conduit coupling. Use with a locknut to connect two boxes side by side or back to back. Use with a locknut to connect fixture housings in continuous runs.

Features:

- Available with Insulated Throat.
- With rigid conduit threads (NPS)

Material/Finish:

Malleable Iron/Zinc Electroplated

Optional Finish:

For additional corrosion protection, specify Mechanically Galvanized
Contact your local representative for pricing and availability.

Third Party Certification:



UL Listed: E-11853



CSA Certified: 009795

Trade Size (inches)	Catalog Number	Insulated Throat Catalog Number	Dimensions in Inches		
			Max. Dia. Across Corners	Thread Length	Flange Thickness
¾	7-38	---	⅞	½	⅜
½	7-50	7-50T	1⅞	½	⅜
¾	7-75	7-75T	1¼	⅝	⅜
1	7-100	7-100T	1¾	⅝	¼
1¼	7-125	7-125T	2⅞	⅞	¼
1½	7-150	7-150T	2½	1	⅜
2	7-200	7-200T	3	1⅞	⅜
2½	7-250	7-250T	3⅞	1¼	⅜
3	7-300	7-300T	4½	1¼	⅜
3½	7-350	7-350T	5⅞	1⅞	⅜
4	7-400*	7-400T*	5¼	1¼	⅜
5	7-500*	7-500T*	6⅞	1¼	⅜
6	7-600*	7-600T*	7⅞	1⅞	⅜

*Not CSA Certified

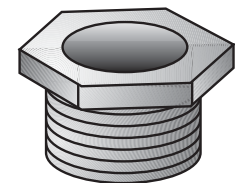
Applicable Third Party Standards:

UL Standard: 514B

CSA Standard: C22.2 No. 18

Fed. Spec./CID: A-A-50553

ANSI/NEMA: FB-1



Type 7