

# Installation Instructions 150TB3 Deadbreak Bailing Assembly

**CONTENTS:** 2-Bail Connectors, Installation Instructions.

The 150TB3 is designed to provide bailing assembly for the tee connector and in-line junction.

## DANGER

All apparatus must be de-energized during installation or removal of part(s). For loadbreak products follow operating instructions. All deadbreak connectors must be de-energized before operating. All 200A deadbreak connectors must be mechanically secured with bails when connected.

All apparatus must be installed and operated in accordance with individual user, local, and national work rules. These instructions do not attempt to provide for every possible contingency.

Do not touch or move energized products.

Excess distortion of the assembled product may result in its failure.

FOR MORE INFORMATION ON PARTS, INSTALLATION RATINGS AND COMPATIBILITY, CALL THE NEAREST ELASTIMOLD OFFICE.

Inspect parts for damage, rating and compatibility with mating parts.

This product should be installed only by competent personnel trained in good safety practices involving high voltage electrical equipment. These instructions are not intended as a substitute for adequate training or experience in such safety practices.

Failure to follow these instructions will result in damage to the product and serious or fatal injury.

If this product is supplied with a protective shipping cover(s), remove this shipping cover(s) and replace with the appropriate HV insulated cap(s) or connector(s) before submerging or energizing the circuit.

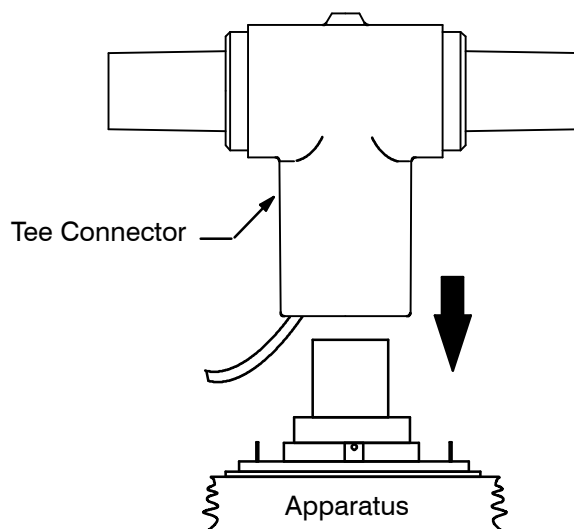
## IMPORTANT

1. Check contents of package to ensure they are complete and undamaged.
2. Check all components to ensure proper fit with cable and/or mating products.
3. Read entire installation instructions before starting.
4. Have all required tools at hand and maintain cleanliness throughout the procedure.

## FOR K150T TEE CONNECTOR

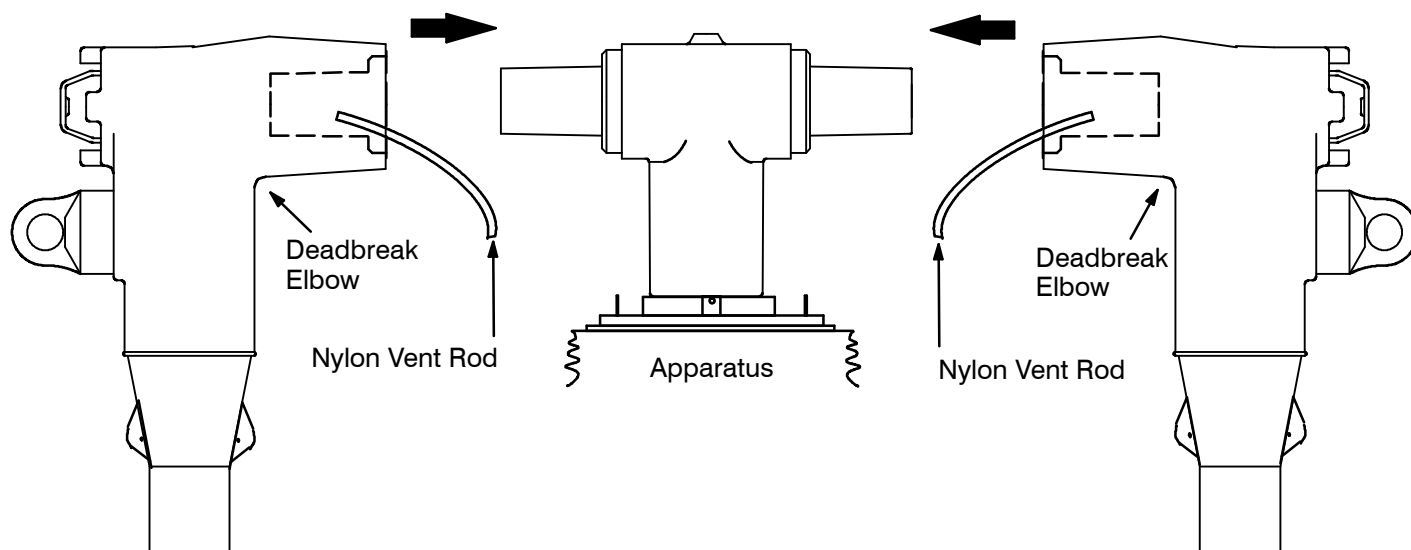
### STEP 1

Following the installation instructions packed with the ELASTIMOLD tee connector (K150T), install it on the desired apparatus.



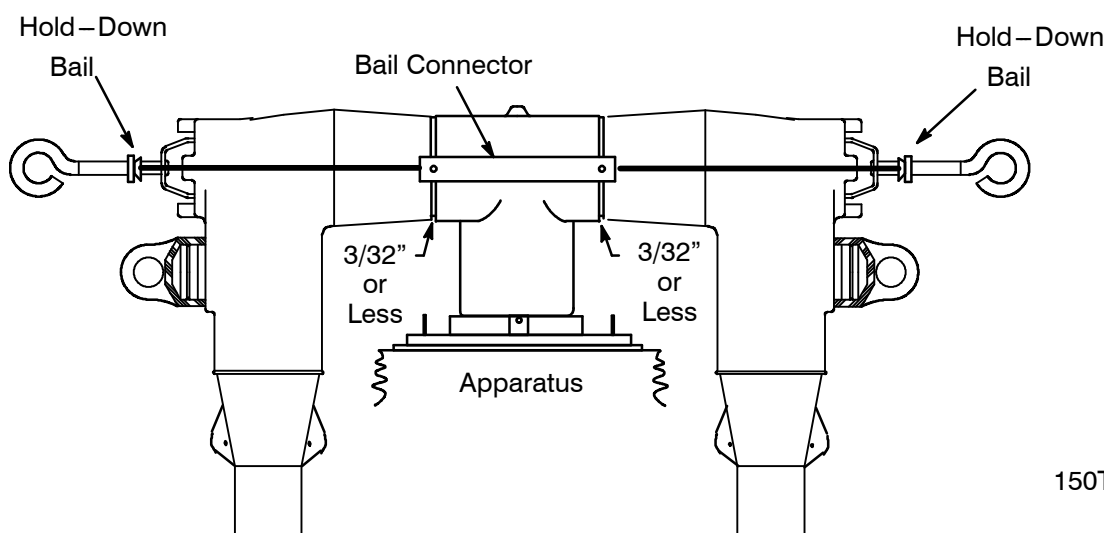
## STEP 2

Following the installation instructions packed with the ELASTIMOLD deadbreak elbow connectors (K156LR), install both elbows on cable and then mate them to the tee connector. Be sure the cables in the elbow connectors are properly trained so the cable entrances are not strained. Care must be taken to insure that the cable entrance will remain at a angle of 90° from the center of the tee connector. Insert the nylon venting rod into the receptacle portion of the desired mating connector to exhaust the air during assembly. Push the connector onto the tee body junction as far as possible. Remove the nylon rod to complete the installation.

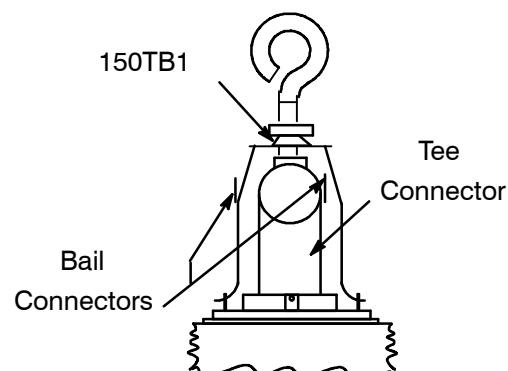


## STEP 3

A gap of 3/32" (2,4 mm) or less between the skirts of the elbow connectors and the tee connector assures proper installation. Position the hold down bails, which are supplied with the elbow connector kits, over the elbows and the connect them by using the bail connectors. With the elbows properly seated, tighten the eyebolts on each bail until both eyebolts touch the bail locator on the elbows. Then tighten each eyebolt an additional two turns.



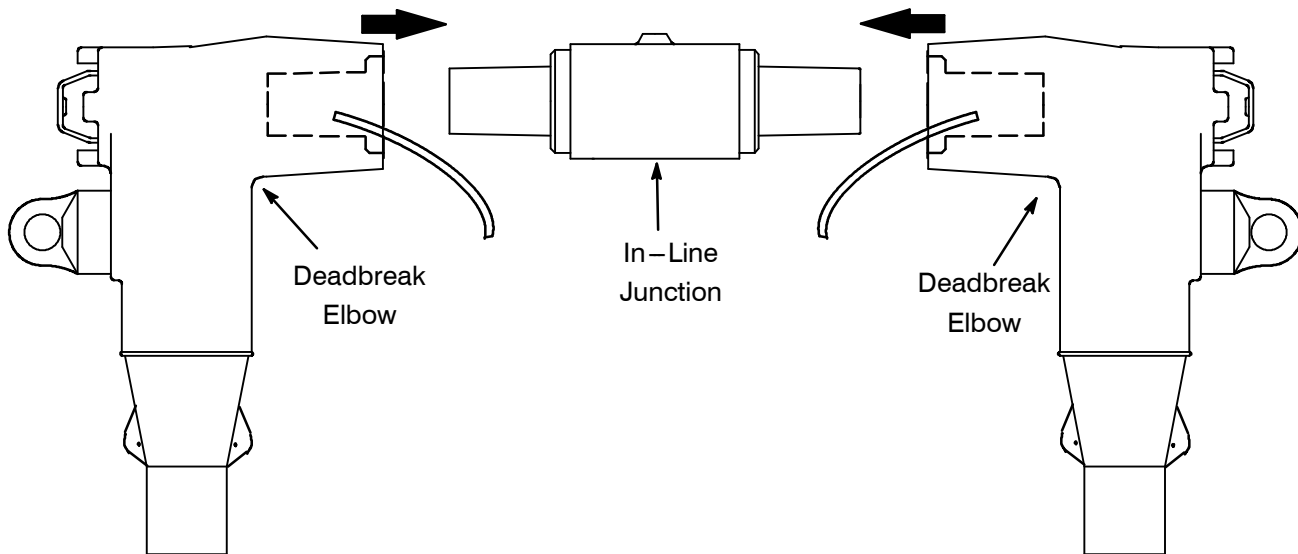
NOTE: A 150TB1 is used to secure the tee connector, then when assembling the 150TB3 it will be necessary to place one bail connector under the 150TB1 bail and one bail connector over the 150TB1 bail.



## **FOR K150S IN-LINE JUNCTION**

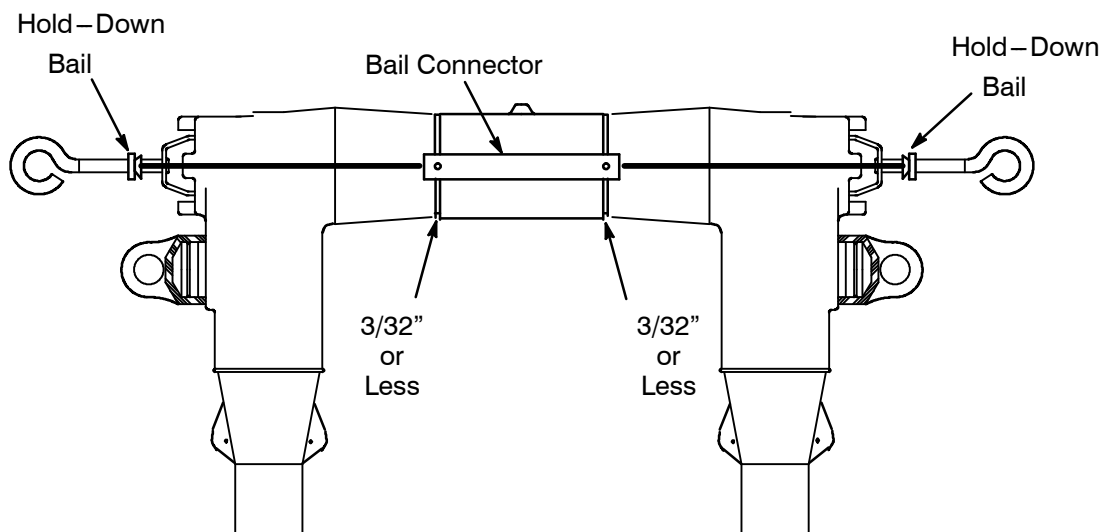
### **STEP 1**

Following the installation instructions packed with the ELASTIMOLD deadbreak elbow connectors (K156LR), install both elbows on cable and then mate them to the in-line junction. Be sure the cables in the elbow connectors are properly trained so the cable entrances are not strained. Care must be taken to insure that the cable entrances will remain at a angle of 90° from the center line of the in-line junction. Insert the nylon venting rod into the receptacle portion of the desired mating connector to exhaust the air during assembly. Push the connector onto the in-line junction as far as possible. Remove the nylon rod to complete the installation.



### **STEP 2**

A gap of 3/32" (2.4 mm) or less between the skirts of the elbow connectors and the in-line junction assures proper installation. Position the hold down bails, which are supplied with the elbow connectors kits, over the elbows and connect them by using the bail connectors. With the elbows properly seated, tighten the eyebolts on each bail until both eyebolts touch the bail locator on the elbows. Then tighten each eyebolt an additional two turns.



***Thomas & Betts***

8155 T&B Boulevard, Memphis, Tennessee 38125  
(800) 888-0211 Fax: (800) 888-0690