

2

1

THIS COPY IS PROVIDED ON A RESTRICTED BASIS AND IS NOT TO BE USED IN ANY WAY DETRIMENTAL TO THE INTERESTS OF PANDUIT CORP.

PANDUIT PART #	WIRE RANGE		COLOR*	MAX. WIRE INSULATION DIAMETER	DIMENSIONS in. [mm ²]			
	AWG	[mm ²]			L	P	OD-1	ID-1
FSD75-8-DSL10	22-20	[0,50]	WHITE	0.10 [2,6]	0.60 [15,2]	0.31 [8,0]	0.05 [1,4]	0.04 [1,0]
FSD76-8-DSL8	18	[0,75]	GRAY	0.11 [2,7]	0.60 [15,2]	0.31 [8,0]	0.06 [1,6]	0.05 [1,2]
FSD77-8-DSL2	-	[1,00]	RED	0.12 [3,0]	0.60 [15,2]	0.31 [8,0]	0.07 [1,8]	0.06 [1,5]
FSD78-8-DSL0	16	[1,50]	BLACK	0.13 [3,2]	0.60 [15,2]	0.31 [8,0]	0.08 [2,1]	0.07 [1,8]
FSD80-8-DSL6	14	[2,50]	BLUE	0.16 [4,0]	0.60 [15,2]	0.31 [8,0]	0.10 [2,6]	0.09 [2,3]

* INSULATION COLOR CONFORMS TO DIN SPECIFICATION

NOTES:

1. USED FOR:

- A. STRANDED COPPER WIRE ONLY
- B. 221°F [105°C] MAX. OPERATING TEMPERATURE

2. INSTALLATION TOOLS:

- A. CSA CERTIFIED: PANDUIT CT-1000

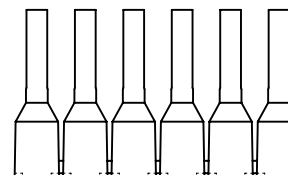
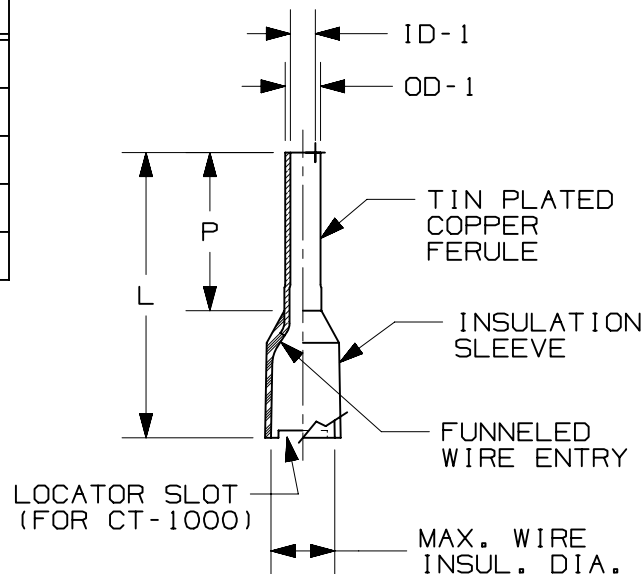
3. WIRE STRIP LENGTH: 13/32" ^{+1/32} ₋₀ [10,0^{+0,8} ₋₀]

4. MATERIAL:

- A. STAMPING: COPPER, TIN PLATED
- B. HOUSING: POLYPROPYLENE, COLOR CODED

5. SEE www.panduit.com FOR PACKAGE QUANTITIES

6. DIMENSIONS IN BRACKETS ARE METRIC EQUIVALENT



CERTIFIED LR31212

REV	DATE	BY	CHK	APR	DESCRIPTION	ECN
03	02.18.13	BDK	BCT	VMB	REMOVED FS FERRULES (NON-DIN) FSD77-8-DSL2 REMOVED 18 AWG EXPANDED WIRE RANGE ON FSD75-8-DSL10 UPDATED DRAWING FORMAT TO CURRENT STANDARDS	A41736
02	02/08	BCT	LCA	LCA	ADDED CSA LOGO AND CERTIFICATION NUMBER	
01	04/07	BCT	BCT	LCA	LENGTH CHANGED TO 'L'; ID-1 ADDED; CHANGED FSD75 & FSD76 P/NS	TR00250
"	"	"	"	"	ADDED '-8-' TO P/N FOR LENGTH; REMOVED 'D' FROM NON-DIN COLORED PARTS	"
00	01/07	DAW	DAW	LCA	RELEASED	TR00208

TITLE					
INSULATED FERRULES ON STRIPS - SINGLE WIRE					
CUSTOMER DRAWING					
ITEM REVISION NAME		N41736BA/03			
DATASET FILE NAME		N41736BA_DC/03A			
UNLESS OTHERWISE SPECIFIED, DIMENSIONAL TOLERANCES ARE: IN [mm]					
.X ±	.XXX ±				
.XX ±	ANGLES ±				
				THIRD ANGLE PROJECTION	
DRAWING NUMBER: A41736					
DRAWN BY	DATE	CHK	SCALE	SHT 1 OF 1	
DAW	01/08		N.T.S.	A	

2

1