

# Rittal – The System.

Faster – better – everywhere.

## ► Wall-mounted enclosures EL, 3-part pre-configured with mounting angles, depth-variable – DK 7721.735

Date : May 24, 2018

ENCLOSURES

POWER DISTRIBUTION

CLIMATE CONTROL

IT INFRASTRUCTURE

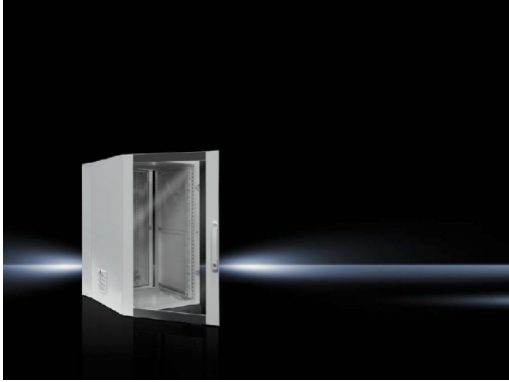
SOFTWARE & SERVICES

FRIEDHELM LOH GROUP



# Wall-mounted enclosures EL, 3-part pre-configured with mounting angles, depth-variable – DK 7721.735

created: 24.05.2018 build on [www.rittal.com/us-en](http://www.rittal.com/us-en)



## Product description

<b>Version:</b>	Pre-configured
<b>Description:</b>	Wall-mounted enclosure with hinged door provides optimum accessibility.
<b>Material:</b>	Wall and hinged part: Carbon steel, 1.5 mm Viewing window: Single-pane safety glass, 3 mm
<b>Surface finish:</b>	Powder-coated
<b>Color:</b>	Wall and hinged part: RAL 7035 Viewing door: RAL 7035/7015 (slate gray)
<b>Protection category IP to IEC 60 529:</b>	IP 54 in conjunction with solid gland plate, top and bottom
<b>Supply includes:</b>	Wall section closed at top and bottom with flange plate, two vertical mounting rails and horizontal C-profile rails for cable clamping Hinged part with 25 mm pitch pattern in the front and rear frame, two 482.6 mm (19") profile angles at the front, fully depth adjustable and side outlet filters on left and right Ground rail with star grounding Designer viewing door 1 enclosure key double bit no. 5 Wall mounting brackets, 10 mm Security lock 3524 E Comfort handle and 2-point locking
<b>Base material:</b>	Carbon steel

## Product features

<b>Dimensions:</b>	Height: 1012 mm (40 ") Height units: 21 U (21 U) Width: 600 mm (24 ") Depth: 573 mm (23 ")
<b>Depth hinged part:</b>	416 mm (16 ")
<b>Installation depth:</b>	520 mm (20 ")
<b>Clearances:</b>	Clearance height: 949 mm (37 ") Clearance width: 502 mm (20 ")
<b>Wall section:</b>	Depth: 135 mm (5.3 ")
<b>Load capacity:</b>	Hinged part, static (max.): 750 N (750 N)
<b>Packaging unit:</b>	1 pc(s).
<b>Weight/packaging unit:</b>	55 kg (121.3 lb.)
<b>EAN:</b>	4028177324251
<b>Customs tariff number:</b>	94032080
<b>ETIM 6.0:</b>	EC000261
<b>ETIM 5.0:</b>	EC002500
<b>eCl@ss 8.0/8.1:</b>	27142408
<b>eCl@ss 7.0/7.1:</b>	27180208
<b>eCl@ss 6.0/6.1:</b>	27180208
<b>eCl@ss 5.1/5.1.4:</b>	27180204
<b>Product description (long):</b>	DK Wall-mounted enclosures, 3-part, WHD: 600x1021x573 mm, 21 U, Pre-configured, with mounting angles, depth-variable
<b>Approvals</b>	
<b>Approvals:</b>	UL + C-UL
<b>Certificates:</b>	Protection category
<b>Declarations:</b>	Declaration of conformity