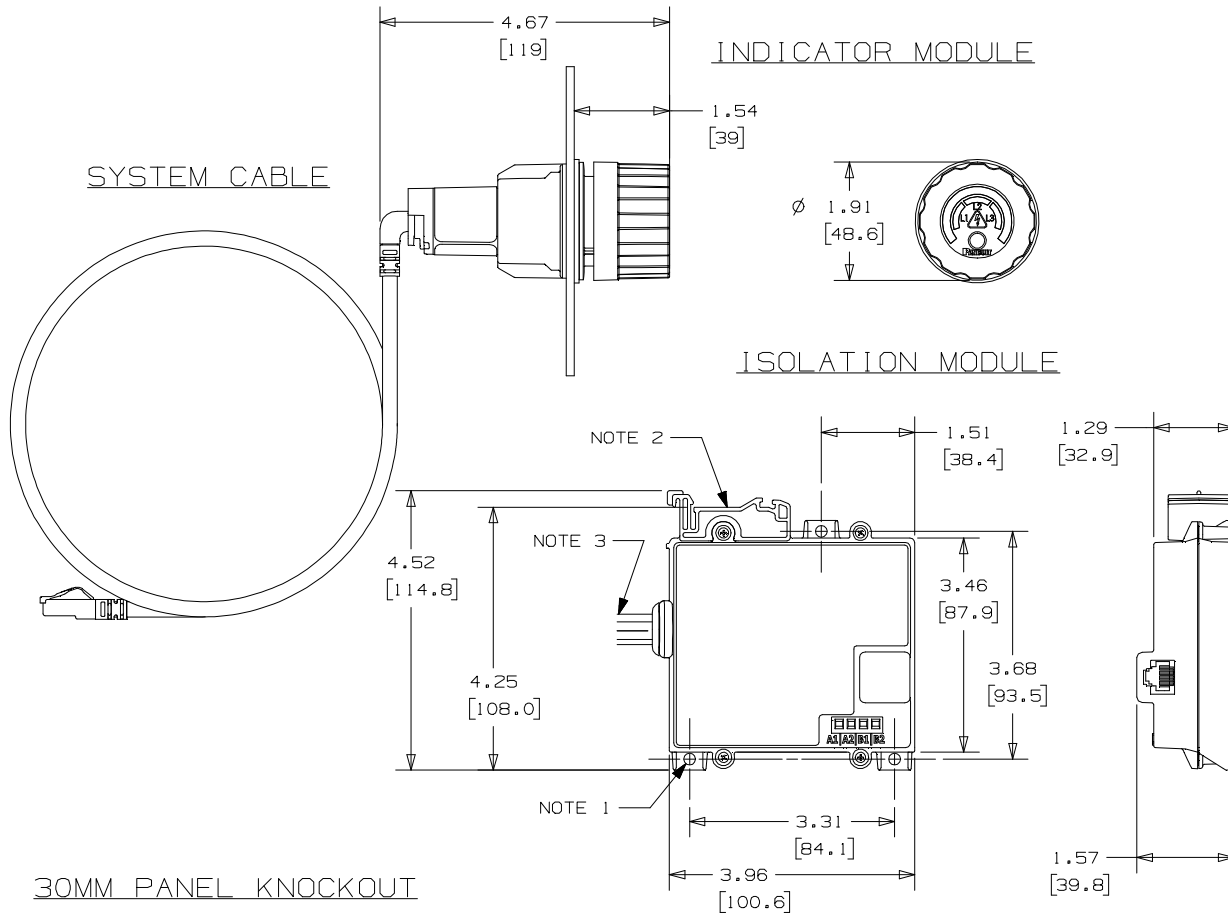


THIS COPY IS PROVIDED ON A RESTRICTED BASIS AND IS NOT TO BE USED IN ANY WAY DETRIMENTAL TO THE INTERESTS OF PANDUIT CORP.



**NOTES, UNLESS OTHERWISE SPECIFIED**

1. Mount for #8 Pan Head Screw. 3 Places.
2. DIN Rail Mounting Feature
3. Lead Wires. 10 Feet X 8. 14 AWG (2.08mm<sup>2</sup>)

**READ PRODUCT INSTRUCTIONS BEFORE USING**

PANDUIT PART NO.: VS-AVT-C02-L10 (2FT SYSTEM CABLE)  
VS-AVT-C08-L10 (8FT SYSTEM CABLE)

**GENERAL SPECIFICATIONS**

**Electrical System:** For use in 1, 2, or 3-phase AC systems  
**Voltage Detection Range:** Up to 600V AC (50/60Hz), 600V DC  
**Absence of Voltage Threshold:** 3V  
**Overvoltage Category:** III (600V)  
**Degree of Protection:** NEMA 1, 12, 4, 4X/IP66\*

**Environmental**

**Operating Temperature:** 0°C to +60°C (32°F to 140°F)  
**Storage Temperature:** -45°C to +85°C (-49°F to +185°F)  
**Humidity:** 5 to 95% non-condensing  
**Pollution Degree:** 3

**Battery**

**Voltage:** Industrial 3.6V Lithium AA  
**Serviceability:** User Replaceable.

**Weight**

VS-AVT-C02-L10: 1711.9gms / 3.77lbs  
VS-AVT-C08-L10: 1791.7gms / 3.95lbs

\*Degree of protection specified is related to the Indicator Module only

REV	DATE	BY	CHK	APR	DESCRIPTION	ECN	FILE	SCALE	SIZE	
1	5/4/17	MROB	MSAD	JW	DRAWING TYPE WAS CONTROL DRAWING	GAECN04135	VERISAFE ABSENCE OF VOLTAGE TESTER	NTS	B	
0	4/10/17	MROB	MSAD	JW	INITIAL RELEASE	GAECN04076	CUSTOMER DRAWING			
							ITEM REVISION NAME 14I216AS/04			
							DATASET FILE NAME 14I216AS_DC/04B			
							UNLESS OTHERWISE SPECIFIED, DIMENSIONAL TOLERANCES ARE: IN (mm) .X ± .1 (2.54) .XXX ± .005 (.127) .XX ± .01 (.25) ANGLES ± 5°	MATERIAL: N/A		
							THIRD ANGLE PROJECTION	DRAWING NUMBER: 14I216AS_DC		
							DRAWN BY MROB	DATE 4/3/17	CHK MSAD	SHT 1 OF 1

D101008P/17