

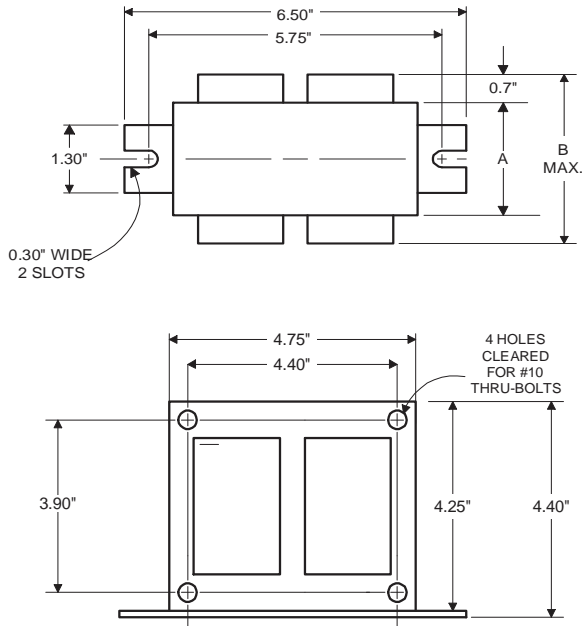
PHILIPS ADVANCE

Metal
Halide
Lamp Ballast

Catalog Number 71A6042TAE
For 400W M135/M155 (P.S.)
60 Hz SUPER-CWA
Status: Active

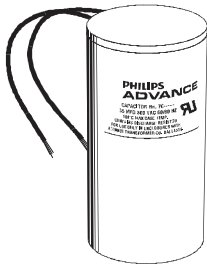
DIMENSIONS AND DATA

4 1/4 X 4 3/4 CORE - 2 COIL UNIT



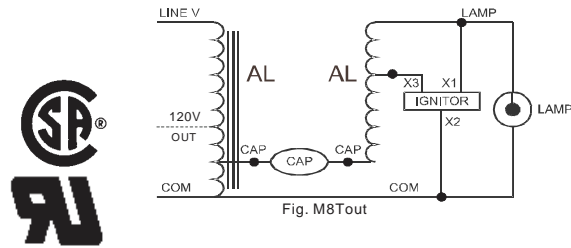
INPUT VOLTS	480				
CIRCUIT TYPE	SUPER-CWA				
POWER FACTOR (min)	90%				
REGULATION					
Line Volts	±10%				
Lamp Watts	±10%				
LINE CURRENT (Amps)					
Operating.....	0.92				
Open Circuit.....	0.71				
Starting.....	0.63				
UL TEMPERATURE RATINGS					
Insulation Class	H(180°C)				
Coil Temperature Code	1029				
MIN. AMBIENT STARTING TEMP.	-20°F or -30°C				
NOM. OPEN CIRCUIT VOLTAGE	270				
INPUT VOLTAGE AT LAMP DROPOUT.....	270				
INPUT WATTS	452				
RECOMMENDED FUSE (Amps).....	3				
CORE and COIL					
Dimension (A)	2.11				
Dimension (B)	4.10				
Weight (lbs.)	10.4				
Lead Lengths	12"				
CAPACITOR REQUIREMENT					
Microfarads	26.0				
Volts (min.)	330				
Fault Current Withstand (amps)					
60 Hz TEST PROCEDURES (Refer to Advance Test Procedure for HID Ballasts - Form 1270)					
High Potential Test (Volts)					
1 minute	2000				
2 seconds	2500				
Open Circuit Voltage Test (Volts)	240-300				
Short-Circuit Current Test (Amps)					
Secondary Current	3.60-4.40				
Input Current.....	0.43-0.71				

Capacitor: 7C260P33-R



Capacitance: 26
Dia/Oval Dim: 1.75
Height: 4.8
Temp Rating: 105°C

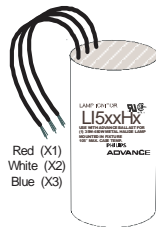
Wiring Diagram:



Ordering Information

Order Suffix	Description
--------------	-------------

Ignitor: LI533-H4



Red (X1)
White (X2)
Blue (X3)

Ballast to Lamp Distance
(BTL) = 2 feet
Temp Rating: 105°C

Data is based upon tests performed by Philips Lighting Electronic N.A. in a controlled environment and representative of relative performance. Actual performance can vary depending on operating conditions. Specifications are subject to change without notice.

Philips Lighting Electronic N.A.

10275 West Higgins Road · Rosemont, IL 60018 · Tel:800-322-2086 Fax:888-432-1882
Customer Support/ Technical Service:800-372-3331 · OEM Support: 866-915-5886

02/20/14