

# Clamped EBMXD Series Explosionproof Disconnect Switches

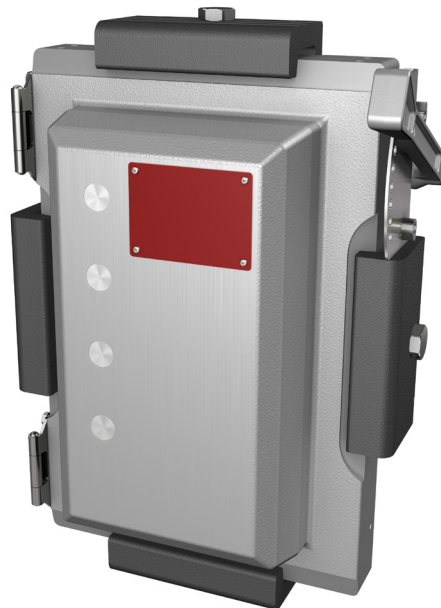
Cl. I, Div. 1 & 2, Groups B<sup>A</sup>, C, D Explosionproof  
Cl. I, Zones 1 & 2 Dust-ignitionproof  
Cl. II, Groups E, F, G  
Cl. III  
NEMA 3R, 4X, 7BCD, 9EFG

## Applications:

- Operating where flammable liquids or gases are handled, processed or used
- Damp, wet, dirty, dusty, hazardous areas where ultimate corrosion and ingress protection is required
- Harsh and hazardous motor control environments, including refineries, chemical and petrochemical plants, corrosive process facilities, food and beverage, marine and mining
- Motor disconnect with circuit protection for motor circuits, lighting, heating and appliance

## Features:

- Clamped enclosure significantly reduces time to enter enclosure and reduces opportunity for missing, stripped or broken bolts
- 65kAIC at 480V enclosure rating for high interrupting capacity applications
- -50°C to +60°C temperature range for extreme environments
- Fusible and non-fused designs for a variety of circuit protection
- Side operated handle provides visual confirmation of proper operator alignment while cover is open and can be padlocked in either "ON" or "OFF" positions for OSHA compliance
- Neoprene cover gasket provides NEMA 4X protection for hose down applications
- Maximum wiring room compliance with National Electrical Code® requirements allows for easy and safe installation
- Rugged, corrosion-resistant, cast copper-free aluminum construction provides NEMA 4X protection
- Semi-clamshell enclosure design, with an external flanged ground joint between body and cover, provides increased access to interior components
- Minimum enclosure-to-enclosure spacing with little interference between the opened cover and adjacent enclosure
- Detachable tap-on mounting feet
- Steel brackets supplied standard for lifting during installation
- Bodies have top and bottom drilled and tapped entries for power and control conduits; removable reducers are supplied standard to accommodate smaller size conduits; all conduit entries are plugged



## Certifications and Compliances:

### NEC/CEC:

- Class I, Divisions 1 & 2, Groups B<sup>A</sup>, C, D
- Class I, Zones 1 & 2
- Class II, Groups E, F, G
- Class III

### UL Standards:

- UL1203 – Explosionproof and Dust-ignitionproof Electrical Equipment for use in Hazardous (Classified) Locations
- UL2062 – High AIC Ratings for Groups C, D

Voltage (AC)	RMS Symmetrical Amps
240, 480	65,000
600	35,000

### CSA Standard:

- cUL to CSA C22.2 No. 30

### Additional Certifications:

- UL/cUL certified for -50°C to +60°C
- SASO Certificate of Conformity

### Environmental Ratings:

- NEMA 3R, 4X, 7BCD, 9EFG

## Standard Materials:

- Body and cover – copper-free aluminum
- Clamp – anodized copper-free aluminum
- External hardware – stainless steel
- Internal parts – galvanized steel

<sup>A</sup> High AIC and -50°C temperature certifications do not apply for Group B.

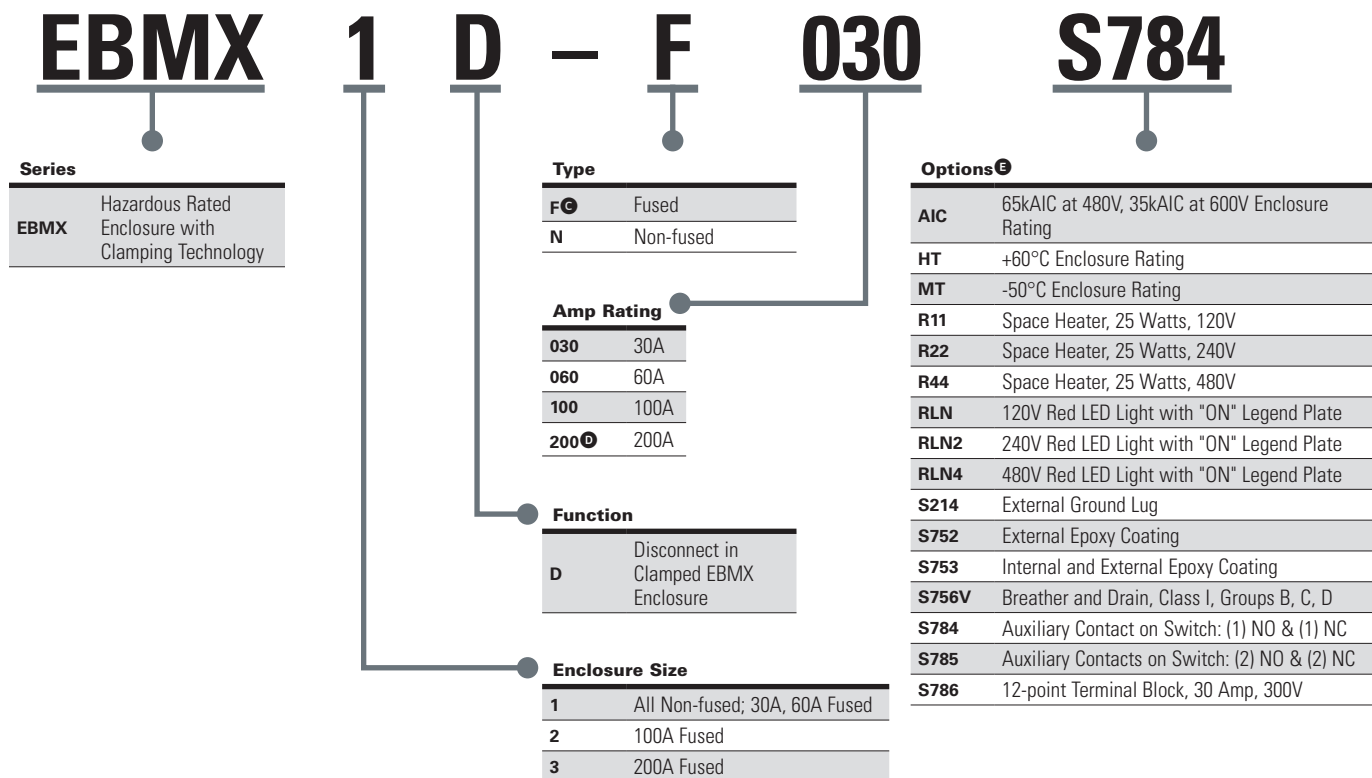
# Clamped EBMXD Series Explosionproof Disconnect Switches

Cl. I, Div. 1 & 2, Groups B<sup>B</sup>, C, D Explosionproof  
Cl. I, Zones 1 & 2 Dust-ignitionproof  
Cl. II, Groups E, F, G  
Cl. III  
NEMA 3R, 4X, 7BCD, 9EFG

2A

## Ordering Information:

Part number example  
**EBMX1D-F030 S784**



## Disconnect Switch HP Ratings, 3-pole:

Cat. #	Amperage	Fuse Type	220-240 VAC	440-480 VAC	600 VAC	125 VDC	250 VDC
<b>EBMX1D-N030</b>	30A	N/A	10	20	25		
<b>EBMX1D-N060</b>	60A		20	40	50	N/A	N/A
<b>EBMX1D-N100</b>	100A		25	50	50		
<b>EBMX1D-F030</b>	30A	Class J <sup>C</sup>	7.5	15	20	3	5
<b>EBMX1D-F060</b>	60A		15	30	50	3	10
<b>EBMX2D-F100</b>	100A		30	60	75	7.5	20
<b>EBMX3D-F200</b>	200A		60	125	150	15	40

<sup>B</sup>High AIC and -50°C temperature certifications do not apply for Group B.

<sup>C</sup>Class J fuses not included.

<sup>D</sup>Available in fused configuration only.

<sup>E</sup>List selected options in alphanumeric order.

2A

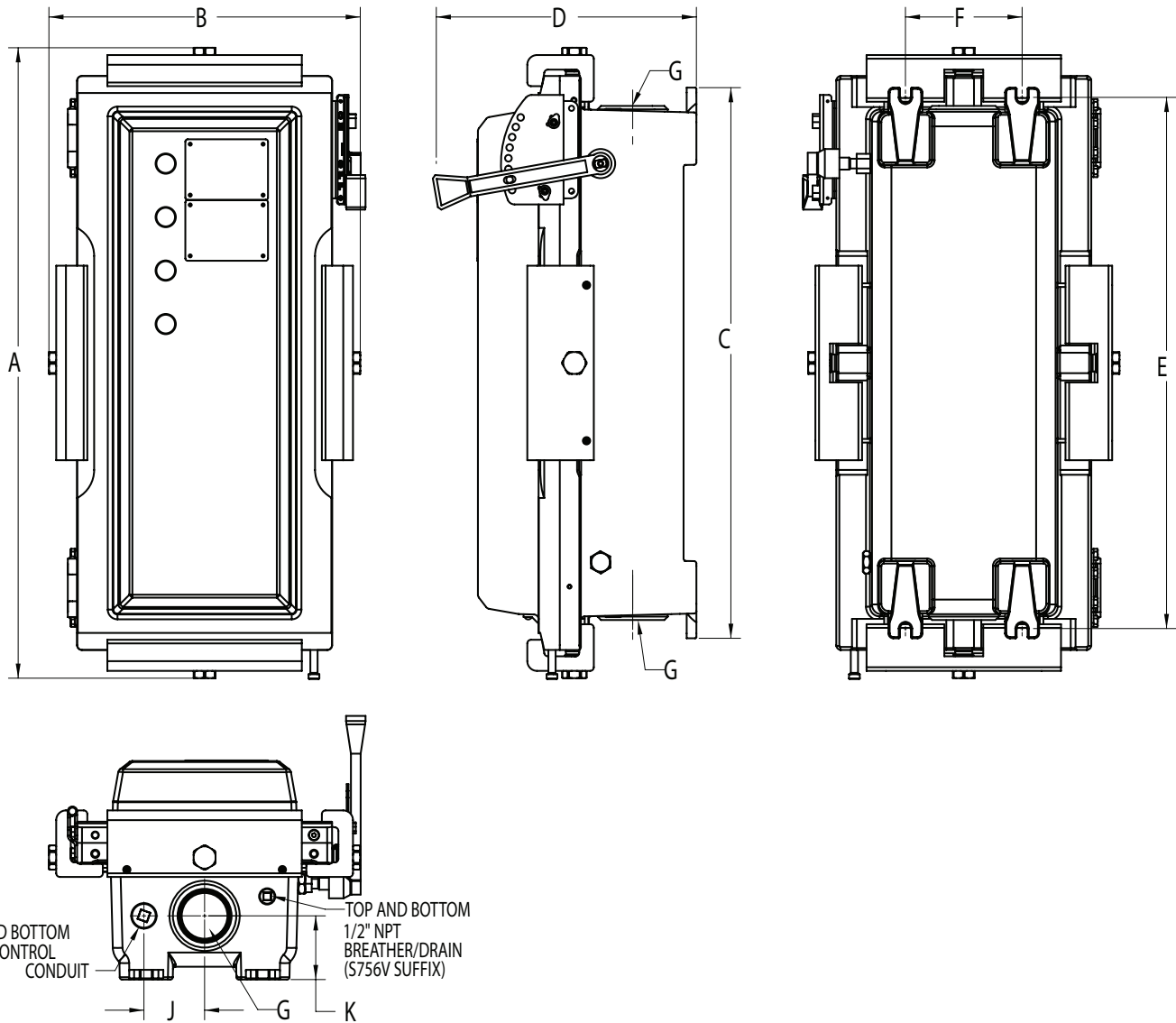
# Clamped EBMXD Series

## Explosionproof

## Disconnect Switches

Cl. I, Div. 1 & 2, Groups B●, C, D Explosionproof  
Cl. I, Zones 1 & 2 Dust-ignitionproof  
Cl. II, Groups E, F, G  
Cl. III  
NEMA 3R, 4X, 7BCD, 9EFG

Dimensions (in Inches):



Enclosure Size	A	B	C	D	E	F	G		J	K
							Drilled & Tapped	with Reducer		
1	22.11	15.98	18.04	12.86	17.13	6.00	2 NPT	1.5 NPT	3.12	3.01
2	32.40	16.28	28.31	13.56	27.25	6.00	3 NPT	2.5 NPT	3.12	3.28
3	42.28	17.93	38.15	13.85	37.25	6.00	3 NPT	2.5 NPT	3.93	3.56

● High AIC and -50°C temperature certifications do not apply for Group B.