

BALDOR® • *RELIANCE*

Product Information Packet

CSSEWDM3554

1.5HP, 1765RPM, 3PH, 60HZ, 56C, 3534M, TEFC, F1

Part Detail							
Revision:	T	Status:	PRD/A	Change #:		Proprietary:	No
Type:	AC	Elec. Spec:	35WGP566	CD Diagram:	CD0005	Mfg Plant:	
Mech. Spec:	35Z176	Layout:	35LYZ176	Poles:	04	Created Date:	01-18-2011
Base:	RG	Eff. Date:	03-06-2017	Leads:	9#18		

Specs			
Catalog Number:	CSSEWDM3554	Inverter Code:	Inverter Ready
Enclosure:	TEFC	KVA Code:	M
Frame:	56C	Lifting Lugs:	No Lifting Lugs
Frame Material:	Stainless Steel	Locked Bearing Indicator:	Locked Bearing
Output @ Frequency:	1.500 HP @ 60 HZ	Motor Finish:	UNPAINTED
Synchronous Speed @ Frequency:	1800 RPM @ 60 HZ	Motor Lead Quantity/Wire Size:	9 @ 18 AWG
Voltage @ Frequency:	460.0 V @ 60 HZ	Motor Lead Exit:	Ko Box
	230.0 V @ 60 HZ	Motor Lead Termination:	Flying Leads
XP Class and Group:	None	Motor Type:	3534M
XP Division:	Not Applicable	Mounting Arrangement:	F1
Agency Approvals:	CSA	Power Factor:	74
	UR	Product Family:	Washdown All Stainless
Auxillary Box:	No Auxillary Box	Pulley End Bearing Type:	Sealed Bearing
Auxillary Box Lead Termination:	None	Pulley Face Code:	C-Face
Base Indicator:	Rigid	Pulley Shaft Indicator:	Standard
Bearing Grease Type:	Polyrex EM (-20F +300F)	Rodent Screen:	None
Blower:	None	RoHS Status:	ROHS COMPLIANT
Current @ Voltage:	2.150 A @ 460.0 V	Shaft Extension Location:	Pulley End

	4.300 A @ 230.0 V	Shaft Ground Indicator:	No Shaft Grounding
	4.700 A @ 208.0 V	Shaft Rotation:	Reversible
Design Code:	B	Shaft Slinger Indicator:	No Slinger
Drip Cover:	No Drip Cover	Speed Code:	Single Speed
Duty Rating:	CONT	Motor Standards:	NEMA
Electrically Isolated Bearing:	Not Electrically Isolated	Starting Method:	Direct on line
Feedback Device:	NO FEEDBACK	Thermal Device - Bearing:	None
Front Face Code:	Standard	Thermal Device - Winding:	None
Front Shaft Indicator:	None	Vibration Sensor Indicator:	No Vibration Sensor
Heater Indicator:	No Heater	Winding Thermal 1:	None
Insulation Class:	H	Winding Thermal 2:	None

Nameplate NP1953A01										
CAT.NO.	CSSEWDM3554									
SPEC.	35Z176P566G1									
HP	1.5									
VOLTS	230/460									
AMP	4.3/2.15									
RPM	1765									
FRAME	56C				HZ	60			PH	3
SER.F.	1.15		CODE	M	DES	B		CLASS	H	
NEMA-NOM-EFF	88.5			PF	74					
RATING	40C AMB-CONT									
CC	010A				USABLE AT 208V			4.7		
DE	6205			ODE	6205					
ENCL	TEFC		SN							

AC Induction Motor Performance Data

Record # 25316 - Typical performance - not guaranteed values

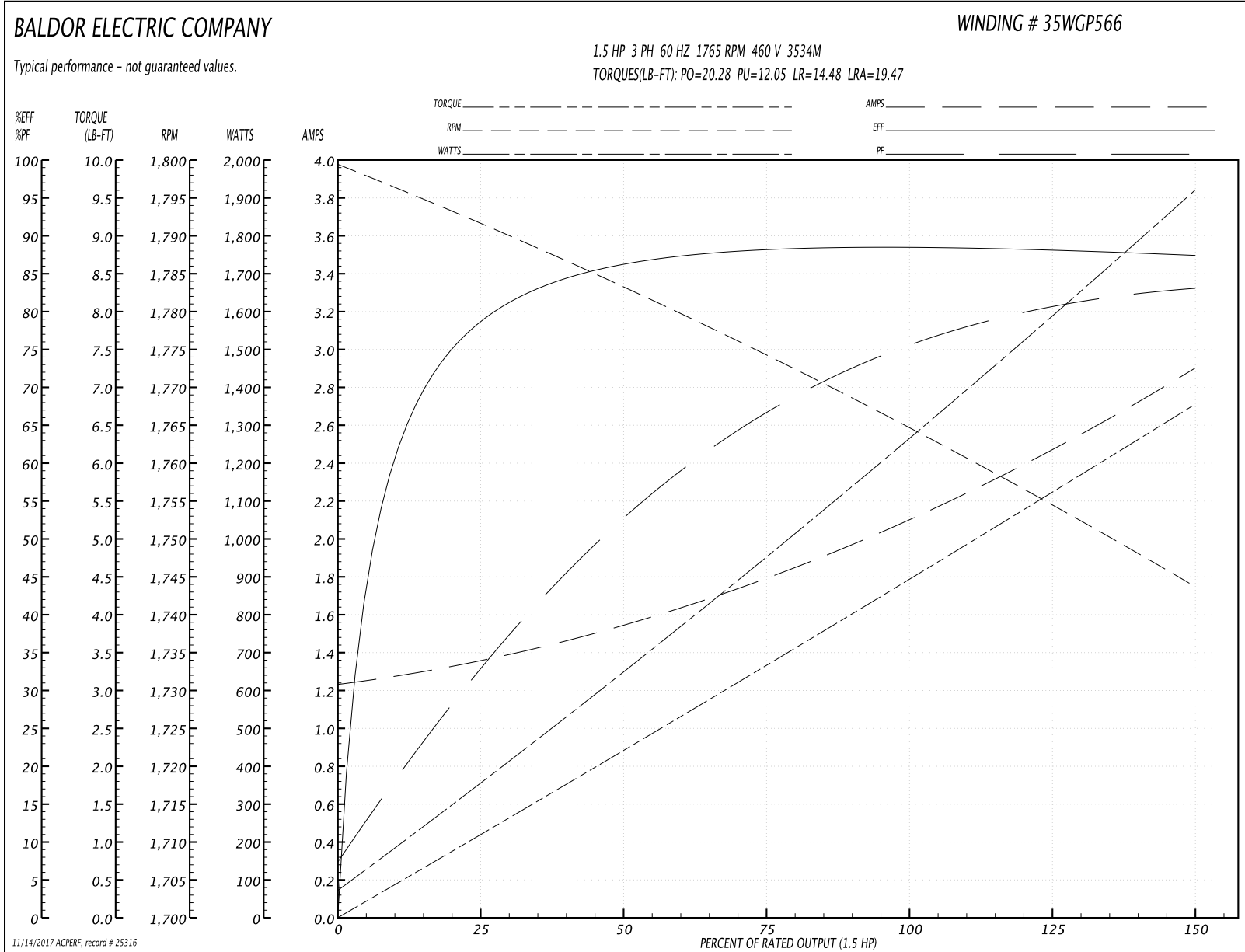
Winding: 35WGP566-R001	Type: 3534M	Enclosure: TEFC
-------------------------------	--------------------	------------------------

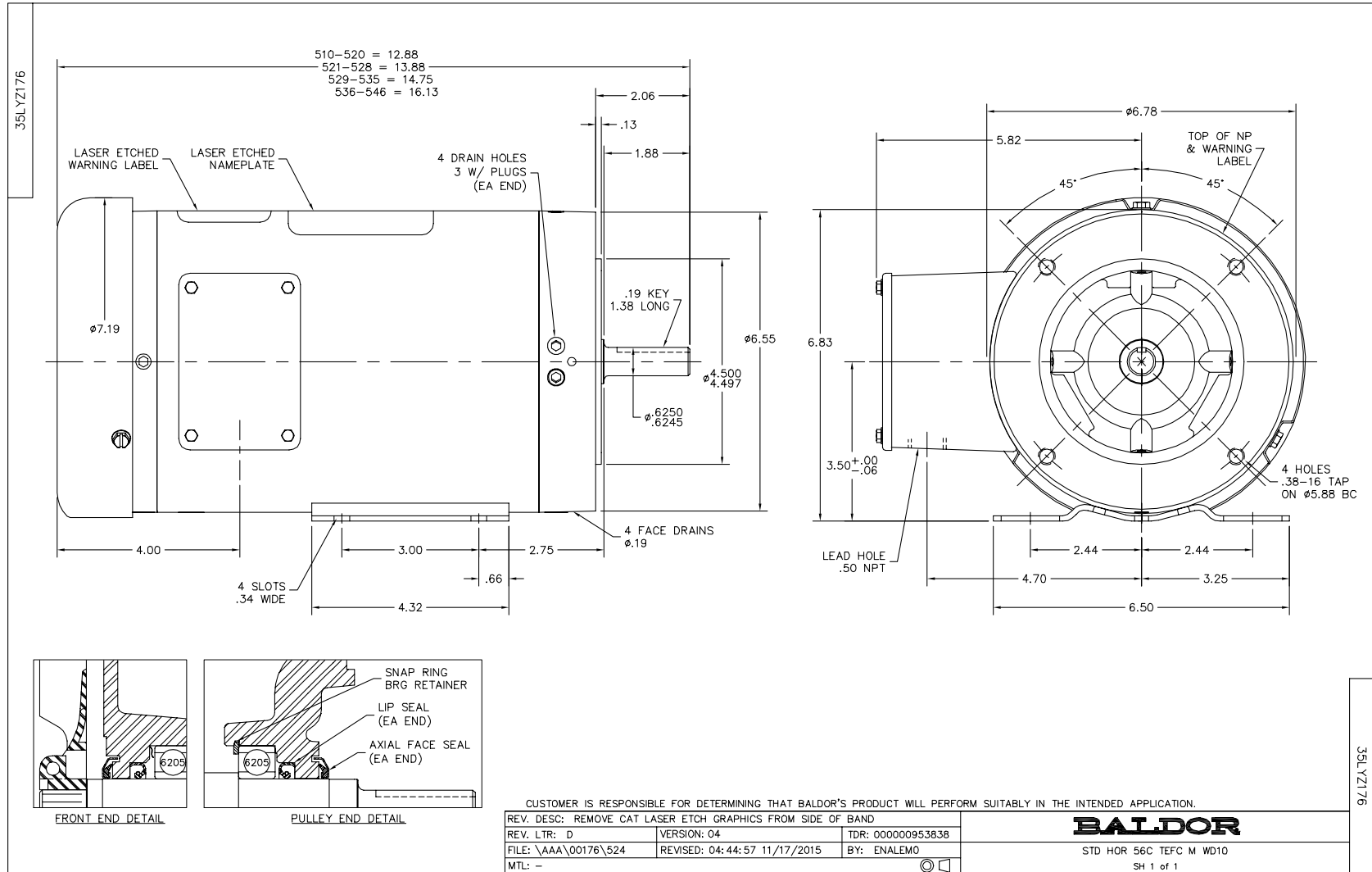
Nameplate Data				460 V, 60 Hz: High Voltage Connection	
Rated Output (HP)	1.5			Full Load Torque	4.5 LB-FT
Volts	230/460			Start Configuration	direct on line
Full Load Amps	4.30/2.15			Breakdown Torque	20.28 LB-FT
R.P.M.	1765			Pull-up Torque	12.05 LB-FT
Hz	60	Phase	3	Locked-rotor Torque	14.48 LB-FT
NEMA Design Code	B	KVA Code	M	Starting Current	19.47 A
Service Factor (S.F.)	1.15			No-load Current	1.25 A
NEMA Nom. Eff.	88.5	Power Factor	74	Line-line Res. @ 25°C	8.03 Ω
Rating - Duty	40C AMB-CONT			Temp. Rise @ Rated Load	40°C
S.F. Amps				Temp. Rise @ S.F. Load	47°C
				Locked-rotor Power Factor	45.8
				Rotor inertia	0.201 LB-FT ²

Load Characteristics 460 V, 60 Hz, 1.5 HP

% of Rated Load	25	50	75	100	125	150	S.F.
Power Factor	34	53	66	75	80	84	78
Efficiency	78.5	86.2	88	88.6	88.2	87.3	88.4
Speed	1792	1784	1774	1764	1754	1744	1759
Line amperes	1.34	1.52	1.8	2.13	2.49	2.89	2.37

Performance Graph at 460V, 60Hz, 1.5HP Typical performance - Not guaranteed values

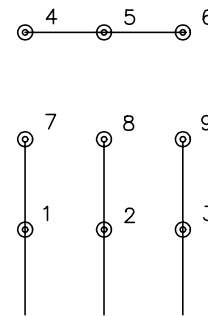




CD0005

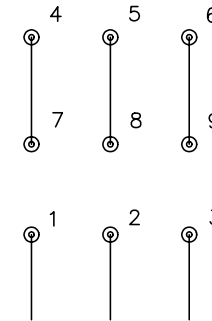


LOW VOLTAGE
(2Y)



LINE

HIGH VOLTAGE
(1Y)



LINE

NOTES:

1. INTERCHANGE ANY TWO LINE LEADS TO REVERSE ROTATION.
2. OPTIONAL THERMOSTATS ARE PROVIDED WHEN SPECIFIED.
3. ACTUAL NUMBER OF INTERNAL PARALLEL CIRCUITS MAY BE A MULTIPLE OF THOSE SHOWN ABOVE.
4. LEAD COLORS ARE OPTIONAL. LEADS MUST ALWAYS BE NUMBERED AS SHOWN.

REV. DESC: REVISE TO SHOW OPTIONAL COLORS			
REV. LTR: E	BY: JLP	REVISED: 01/19/99 10:15	TDR: 0171435
90000		FILE: AAA00005140	MDL: -
		MTL: -	

BALDOR ELECTRIC Co.

3PH, DV, 9 LEADS

CD0005