

BALDOR® • **RELIANCE**

Product Information Packet

BM3554T

1.5HP, 1755RPM, 3PH, 60HZ, 145T, 3521M, TEFC, F

Part Detail							
Revision:	M	Status:	INA/A	Change #:		Proprietary:	No
Type:	AC	Elec. Spec:	35WGZ541	CD Diagram:	CD0005	Mfg Plant:	
Mech. Spec:	35A021	Layout:	35LYA021	Poles:	04	Created Date:	01-14-2008
Base:	RG	Eff. Date:	03-08-2016	Leads:	9#18		

Specs			
Catalog Number:	BM3554T	Insulation Class:	B
Enclosure:	TEFC	Inverter Code:	Not Inverter
Frame:	145T	KVA Code:	M
Frame Material:	Steel	Lifting Lugs:	No Lifting Lugs
Output @ Frequency:	1.500 HP @ 60 HZ	Locked Bearing Indicator:	No Locked Bearing
Synchronous Speed @ Frequency:	1800 RPM @ 60 HZ	Motor Lead Quantity/Wire Size:	9 @ 18 AWG
Voltage @ Frequency:	208.0 V @ 60 HZ	Motor Lead Exit:	Ko Box
	230.0 V @ 60 HZ	Motor Lead Termination:	Flying Leads
	460.0 V @ 60 HZ	Motor Type:	3521M
XP Class and Group:	None	Mounting Arrangement:	F1
XP Division:	Not Applicable	Power Factor:	70
Agency Approvals:	UR	Product Family:	General Purpose
	CSA	Product Type:	BRAKE MOTOR
Auxillary Box:	No Auxillary Box	Pulley End Bearing Type:	Ball
Auxillary Box Lead Termination:	None	Pulley Face Code:	Standard
Base Indicator:	RG	Pulley Shaft Indicator:	Standard
Bearing Grease Type:	Polyrex EM (-20F +300F)	Rodent Screen:	None
Blower:	None	Shaft Extension Location:	Pulley End

Current @ Voltage:	2.400 A @ 460.0 V	Shaft Ground Indicator:	No Shaft Grounding
	4.800 A @ 230.0 V	Shaft Rotation:	Reversible
	5.100 A @ 208.0 V	Shaft Slinger Indicator:	No Slinger
Design Code:	B	Speed Code:	Single Speed
Drip Cover:	No Drip Cover	Motor Standards:	NEMA
Duty Rating:	CONT	Starting Method:	Direct on line
Electrically Isolated Bearing:	Not Electrically Isolated	Thermal Device - Bearing:	None
Feedback Device:	NO FEEDBACK	Thermal Device - Winding:	None
Front Face Code:	Brake Mounting	Vibration Sensor Indicator:	No Vibration Sensor
Front Shaft Indicator:	None	Winding Thermal 1:	None
Heater Indicator:	No Heater	Winding Thermal 2:	None

Nameplate NP1256L										
CAT.NO.	BM3554T									
SPEC.	35A021Z541G1									
HP	1.5									
VOLTS	208-230/460									
AMP	5.1-4.8/2.4									
RPM	1755									
FRAME	145T				HZ	60			PH	3
SER.F.	1.15			CODE	M	DES	B		CLASS	B
NEMA-NOM-EFF	84			PF	70					
RATING	40C AMB-CONT									
CC	USABLE AT 208V									
DE	6205				ODE	6203				
ENCL	TEFC			SN						

AC Induction Motor Performance Data

Record # 32002 - Typical performance - not guaranteed values

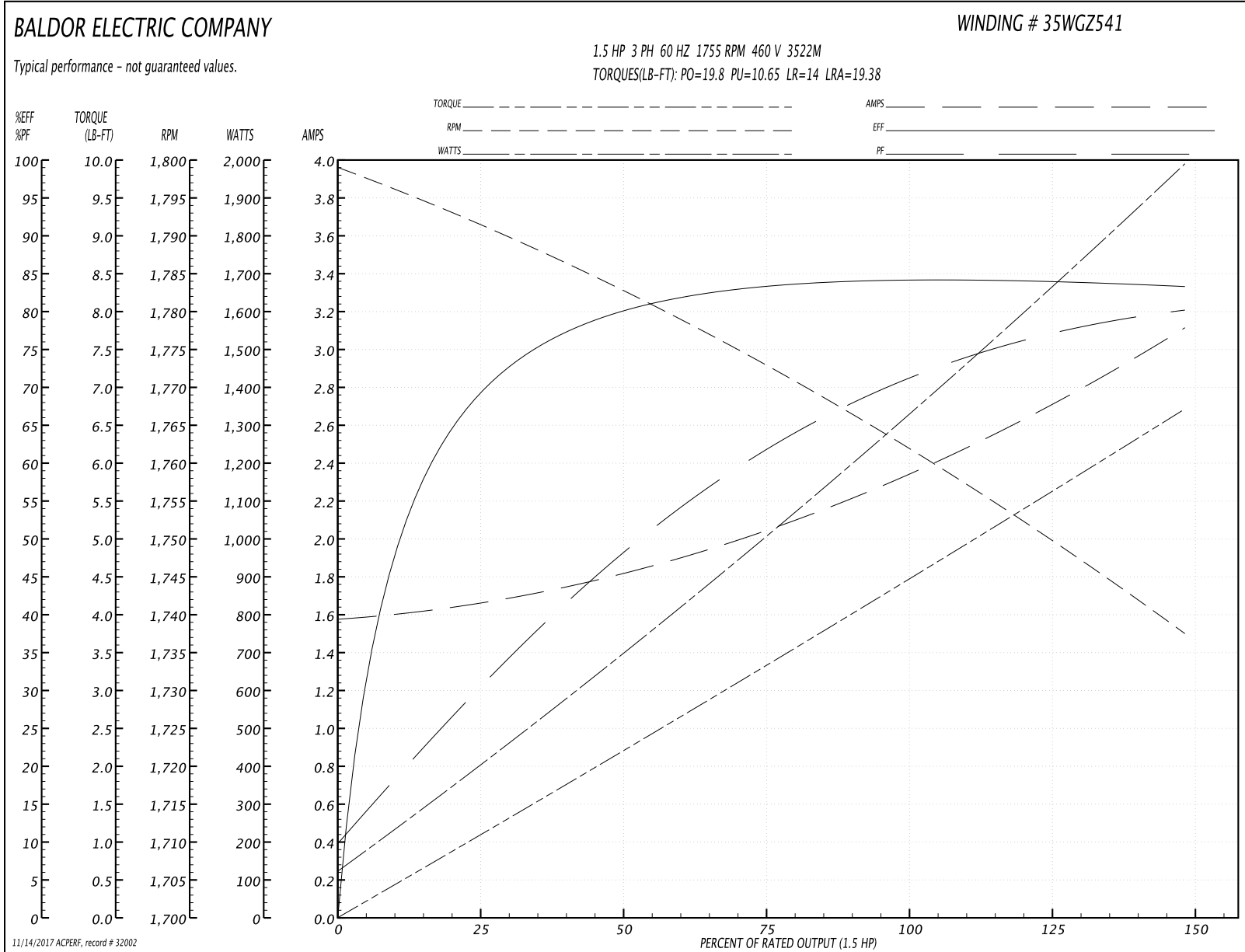
Winding: 35WGZ541-R012	Type: 3522M	Enclosure: TEFC
-------------------------------	--------------------	------------------------

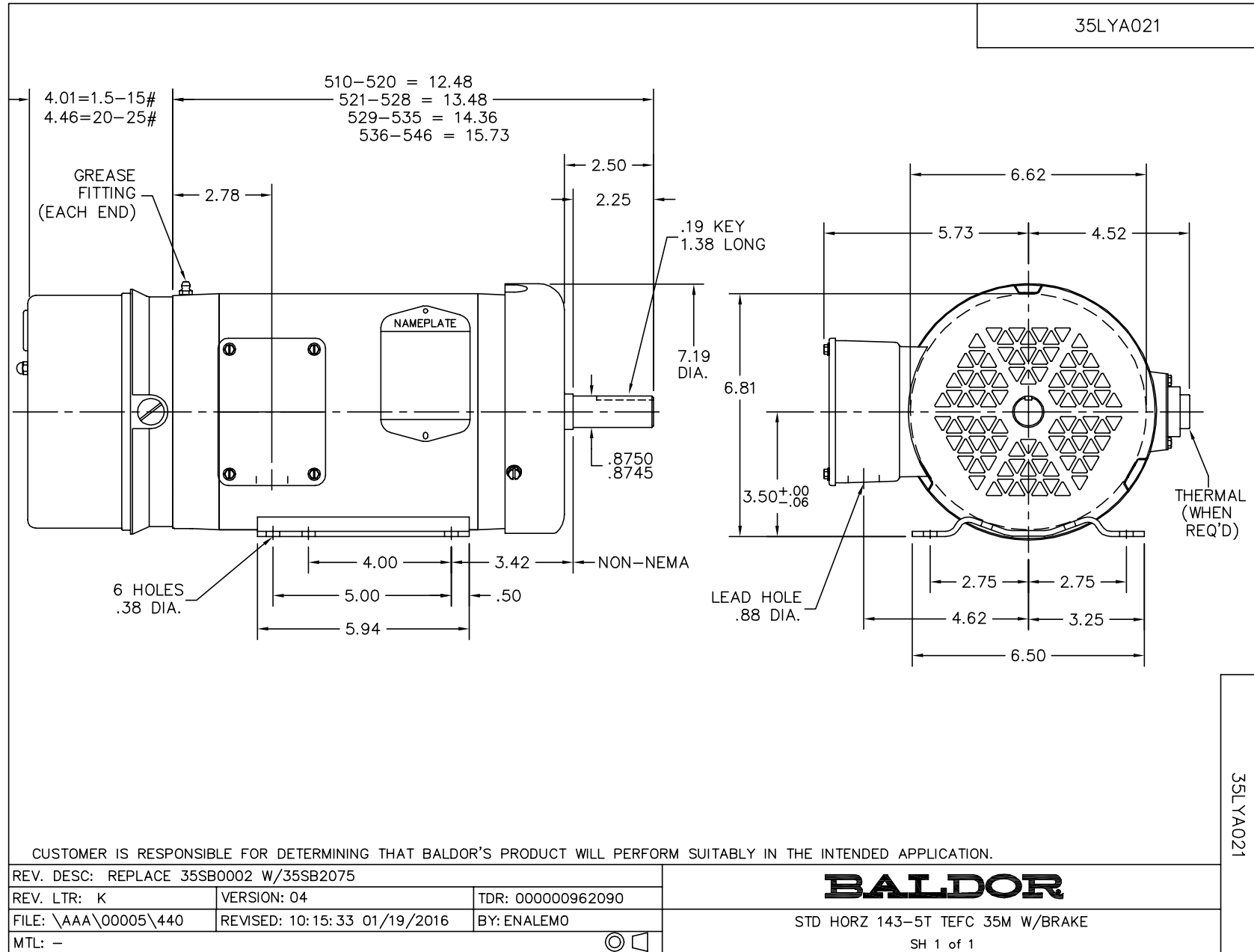
Nameplate Data				460 V, 60 Hz: High Voltage Connection	
Rated Output (HP)	1.5			Full Load Torque	4.42 LB-FT
Volts	208-230/460			Start Configuration	direct on line
Full Load Amps	5.1-4.8/2.4			Breakdown Torque	19.8 LB-FT
R.P.M.	1755			Pull-up Torque	10.65 LB-FT
Hz	60	Phase	3	Locked-rotor Torque	14 LB-FT
NEMA Design Code	B	KVA Code	M	Starting Current	19.38 A
Service Factor (S.F.)	1.15			No-load Current	1.59 A
NEMA Nom. Eff.	84	Power Factor	70	Line-line Res. @ 25°C	9.72 Ω
Rating - Duty	40C AMB-CONT			Temp. Rise @ Rated Load	55°C
S.F. Amps				Temp. Rise @ S.F. Load	63°C
				Locked-rotor Power Factor	53.6
				Rotor inertia	0.13 LB-FT ²

Load Characteristics 460 V, 60 Hz, 1.5 HP

% of Rated Load	25	50	75	100	125	150	S.F.
Power Factor	30	48	62	70	77	80	74
Efficiency	68.5	79.3	83.4	84.3	84.2	83.1	83.9
Speed	1792	1783	1773	1762	1751	1737	1754
Line amperes	1.64	1.8	2.04	2.35	2.7	3.11	2.57

Performance Graph at 460V, 60Hz, 1.5HP Typical performance - Not guaranteed values

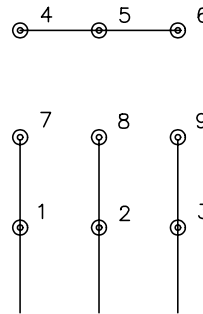




CD0005

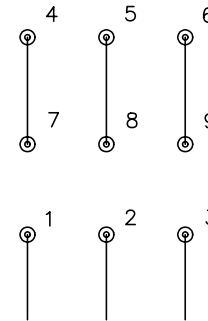


LOW VOLTAGE
(2Y)



LINE

HIGH VOLTAGE
(1Y)



LINE

NOTES:

1. INTERCHANGE ANY TWO LINE LEADS TO REVERSE ROTATION.
2. OPTIONAL THERMOSTATS ARE PROVIDED WHEN SPECIFIED.
3. ACTUAL NUMBER OF INTERNAL PARALLEL CIRCUITS MAY BE A MULTIPLE OF THOSE SHOWN ABOVE.
4. LEAD COLORS ARE OPTIONAL. LEADS MUST ALWAYS BE NUMBERED AS SHOWN.

REV. DESC: REVISE TO SHOW OPTIONAL COLORS			
REV. LTR: E	BY: JLP	REVISED: 01/19/99 10:15	TDR: 0171435
90000		FILE: AAA00005140	MDL: -
		MTL: -	

BALDOR ELECTRIC Co.

3PH, DV, 9 LEADS

CD0005