

Issue Date: 10/25/2012

Page: 1 of 2

File: PSS-K655L1

15/25kV	600A Deadbreak 1 Way L-Kit	w/o Test Point	K655L1
---------	----------------------------	----------------	--------



## Features:

- Fully rated 15/25kV, 600 Amp Deadbreak 1 Way L-Kit
- Fully shielded, fully submersible molded rubber housing
- 100% peroxide-cured construction includes insulation and conductive EPDM materials
- Can be easily connected or disconnected using standard hand tools and equipment in a de-energized state

## K655L1 1-Way L-Kit

### Applications:

The K655L1 elbow kit is comprised of a K655LR elbow connector and two K650BIP basic insulating plugs. It is used to dead-end cable and using the two insulating plugs as test points allows for capacitive voltage testing.

### Ratings:

Meets ANSI/IEEE Standard 386, Latest Revision

#### For 15kV Voltage Class:

8.3kV Max Phase-to-Ground – Operating Voltage  
 14.4kV Max Phase-to-Phase  
 95kV BIL – Impulse Withstand (1.2 x 50 microsecond wave)  
 34kV AC – One minute withstand  
 53kV DC – 15 minutes withstand  
 11kV AC – Corona Extinction @ 3pC sensitivity  
 600 Amp – Continuous  
 25kA Sym – 10 Cycles Momentary

#### For 28kV Voltage Class:

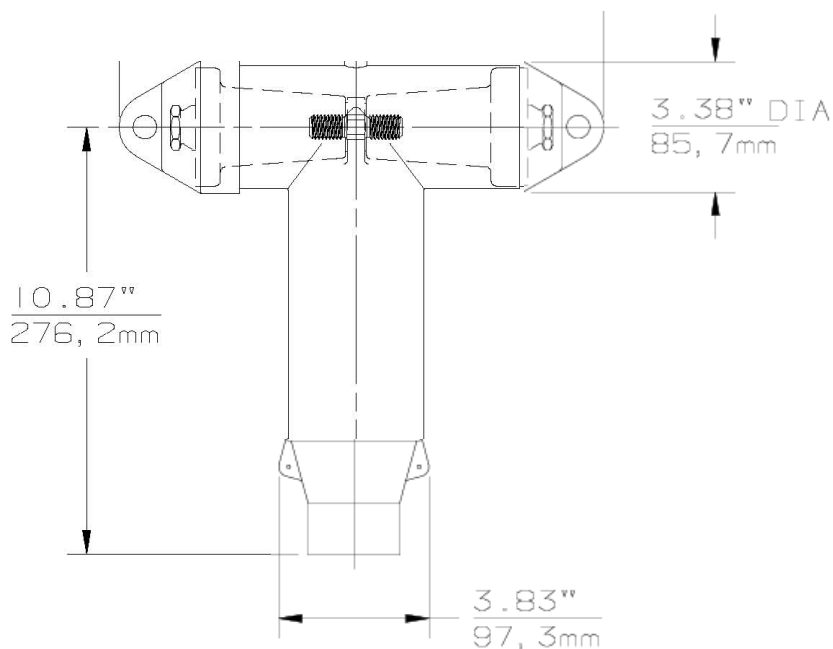
16.2kV Max Phase-to-Ground – Operating Voltage  
 28kV Max Phase-to-Phase  
 140kV BIL – Impulse Withstand (1.2 x 50 microsecond wave)  
 45kV AC – One minute withstand  
 84kV DC – 15 minutes withstand  
 21.5kV AC – Corona Extinction @ 3pC sensitivity  
 600 Amp – Continuous  
 25kA Sym – 10 Cycles Momentary

Issue Date: 10/25/2012

Page: 2 of 2

File: PSS-K655L1

15/25kV	600A Deadbreak 1 Way L-Kit	w/o Test Point	K655L1
---------	----------------------------	----------------	--------



## Ordering Instructions:

To order 15/25kV, 600A 1 Way L-Kit, specify **K655L1**.

### Each kit contains the following:

1	Basic Elbow	K655BLR
2	Tube, lubricant	82-08
2	Basic Insulating Plug	K650BIP
1	Stud	650SA
1	Installation Instruction	IS-0230
1	Installation Instruction	IS-0249

### Example:

The ordering number for a 600 Amp 1 Way L-Kit is K655L1.