

# Rittal – The System.

Faster – better – everywhere.

## **Wall console CP 40, stainless steel – CP 6665.500**

Date : May 25, 2018

ENCLOSURES

POWER DISTRIBUTION

CLIMATE CONTROL

IT INFRASTRUCTURE

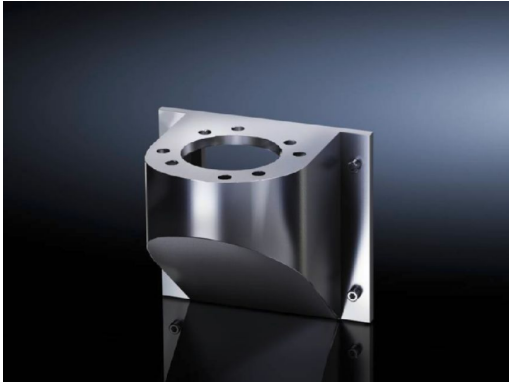
SOFTWARE & SERVICES

FRIEDHELM LOH GROUP



# Wall console CP 40, stainless steel – CP 6665.500

created: 25.05.2018 build on [www.rittal.com/us-en](http://www.rittal.com/us-en)



## Product description

**Version:** Front, hole Ø 9 mm

**Applications:** With drill for installation of  
Base mounting bracket, swivel, CP 40, stainless steel (6663.500), with 4 screws  
Wall/base mounting bracket, rigid, CP 40, stainless steel (6663.000), with 4 screws and nuts

**Material:** Stainless steel 1.4301 (AISI 304)

**Surface finish:** Brushed, grain 240

**Protection category  
IP to IEC 60 529:** IP 69K

## Product features

**rigid:** yes

**Packaging unit:** 1 pc(s).

**Weight/packaging  
unit:** 1.8 kg (4 lb.)

**EAN:** 4028177184725

**Customs tariff  
number:** 73269098

**ETIM 6.0:** EC000882

**ETIM 5.0:** EC000882

|                                    |  |
|------------------------------------|--|
| <b>eCl@ss 8.0/8.1:</b>             | 27400556   |
| <b>eCl@ss 7.0/7.1:</b>             | 27189261   |
| <b>eCl@ss 6.0/6.1:</b>             | 27189261   |
| <b>eCl@ss 5.1/5.1.4:</b>           | 27189247   |
| <b>Product description (long):</b> | CP Wall console CP 40, front mounting, stainless steel, 1.4301 |
| <b>Approvals</b>                   |  |
| <b>Declarations:</b>               | Manufacturer's declaration                                     |