



# T5

## 24T5HO/46-835/IF33/P/DIM 10/1

Philips LED T5 InstantFit Lamps are an ideal energy saving choice for existing linear fluorescent fixtures.

### Product data

General Information	
Base	G5 [ G5]
EU RoHS compliant	Yes
Nominal Lifetime (Nom)	50000 h
Switching Cycle	50000X
Light Technical	
Color Code	835 [ CCT of 3500K]
Beam Angle (Nom)	140 °
Initial lumen (Nom)	3300 lm
Color Designation	White (WH)
Correlated Color Temperature (Nom)	3500 K
Luminous Efficacy (rated) (Nom)	137.00 lm/W
Color Consistency	<5
Color Rendering Index (Nom)	82
LLMF At End Of Nominal Lifetime (Nom)	70 %
Operating and Electrical	
Input Frequency	40000-80000 Hz
Power (Rated) (Nom)	24 W
Lamp Current (Max)	600 mA
Lamp Current (Min)	400 mA
Starting Time (Nom)	0.5 s
Warm Up Time to 60% Light (Nom)	0.5 s

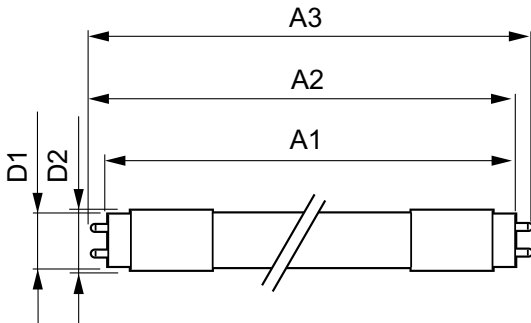
UL Type	Type A - works on ballast Type C - works with dedicated LED driver Type A+C - works with both ballasts and the LED driver
Power Factor (Nom)	0.9
Voltage (Nom)	39-64 V
Temperature	
T-Ambient (Max)	45 °C
T-Ambient (Min)	-20 °C
T-Storage (Max)	65 °C
T-Storage (Min)	-40 °C
T-Case Maximum (Nom)	45 °C
Controls and Dimming	
Dimmable	Yes
Mechanical and Housing	
Product Length	48 in
Approval and Application	
Energy Efficiency Label (EEL)	Not applicable
Energy Saving Product	Yes
Approbation Marks	UL certificate RoHS compliance DLC compliance
Energy Consumption kWh/1000 h	- kWh

# T5

Energy Certifications	DLC Standard
<b>Product Data</b>	
Order product name	24T5HO/46-835/IF33/P/DIM 10/1
EAN/UPC - Product	046677467135
Order code	467134
Numerator - Quantity Per Pack	1

Numerator - Packs per outer box	10
Material Nr. (12NC)	929001283804
Net Weight (Piece)	0.170 kg
Model Number	9290012838

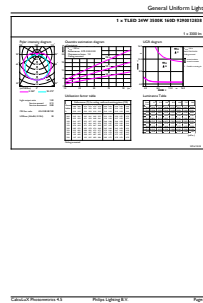
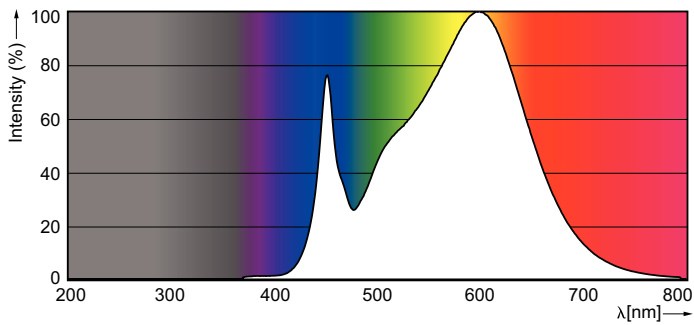
## Dimensional drawing



TLED 120V 24-54W 3600lm 3500K G5

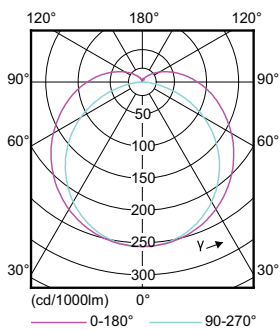
Product	D1	D2	A1	A2	A3
24T5HO/46-835/ IF33/P/DIM 10/1	15.2 mm	17.8 mm	1147.8 mm	1154.9 mm	1162 mm

## Photometric data



LEDtube 1100mm 24W G5 835 3300lm

LEDtube 1100mm 24W G5 835 3300lm



LEDtube 1100mm 24W G5 835 3300lm

