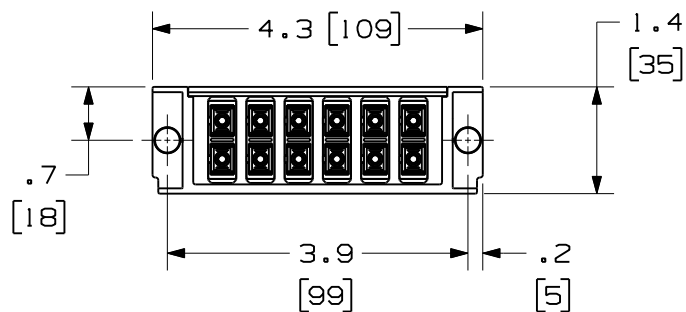
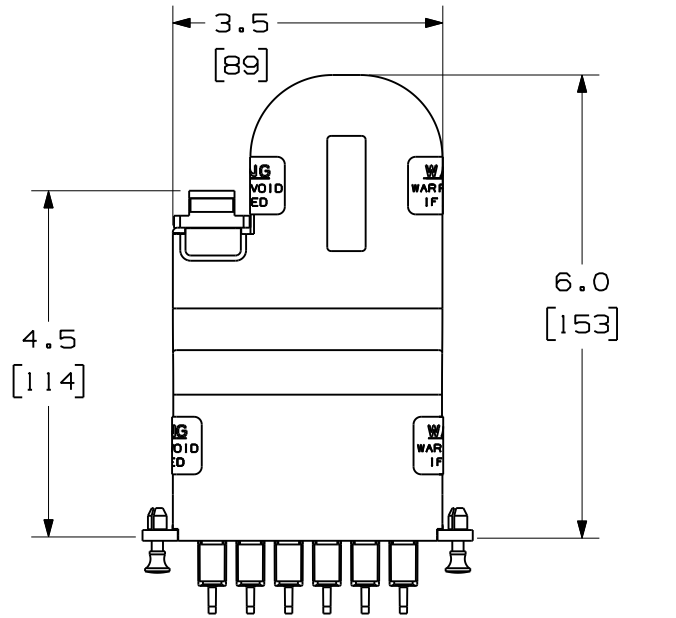


THIS COPY IS PROVIDED ON A RESTRICTED BASIS AND IS NOT TO BE USED IN ANY WAY DETRIMENTAL TO THE INTERESTS OF PANDUIT CORP.



FRONT VIEW
SHOWN W/O DUSTCAPS

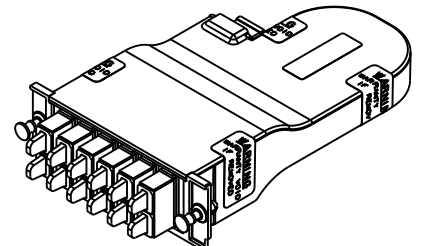
PANDUIT P/N	DESCRIPTION
FCX0-12-3Y	OPTIMIZED 50/125 10GbE MULTIMODE 12 FIBER, MTP TO SC CASSETTE MODULE
FCX-12-3Y	50/125 10GbE MULTIMODE 12 FIBER, MTP TO SC CASSETTE MODULE
FCZ0-12-3Y	OPTIMIZED 50/125 10GbE OM4 MULTIMODE 12 FIBER, MTP TO SC CASSETTE MODULE
FCZ-12-3Y	50/125 10GbE OM4 MULTIMODE 12 FIBER, MTP TO SC CASSETTE MODULE
FC5-12-3Y	50/125 MULTIMODE 12 FIBER, MTP TO SC CASSETTE MODULE
FC6-12-3Y	62.5/125 MULTIMODE 12 FIBER, MTP TO SC CASSETTE MODULE
FC9-12-3Y	9/125 SINGLEMODE 12 FIBER, MTP TO SC CASSETTE MODULE

- NOTES:
- SEE CURRENT CATALOG FOR PART NUMBER SUFFIXES TO INDICATE COLOR AND/OR PACKAGE QUANTITIES.
 - SEE CATALOG FOR COMPLETE LIST OF PARTS APPLICABLE FOR USE WITH THIS PRODUCT.
 - MATERIALS:
 - MODULE MATERIAL: PLASTIC
 - ADAPTER: COMPOSITE PLASTIC
 - CASSETTE MODULE WEIGHT: 5.28oz [149.8g]
 - DIMENSIONS IN BRACKETS ARE METRIC.



PORT DESIGNATIONS

AS VIEWED FROM THE FRONT
WITH ADAPTERS REMOVED FOR CLARITY



REV	DATE	BY	CHK	DESCRIPTION	ECN	R	CUST	SUP	OTH
02	09-16-09	EFK		RELEASED TO PRODUCTION	02068-39				

FIBER OPTIC CASSETTE MODULE
12 FIBER, MTP TO DUPLEX SC CONFIGURATION
CUSTOMER DRAWING

PANDUIT™
CORP.
TINLEY PARK, ILL 60477

DRAWING FILENAME
M02068AK_DC/00G

SCALE
NONE

PART NO.
SEE TABLE

DRAWING NO.
02068-39

SIZE
A

THIRD ANGLE
PROJECTION

ALL DIMENSIONS ARE GIVEN IN INCHES,
UNLESS OTHERWISE SPECIFIED.

DIMENSIONAL TOLERANCES ARE:
(.X) ±.010 (0.3)
(.XX) ±.03 (0.8) ANGLES

DRAWN BY
MC

DATE
12-10-04

CHK'D
MTV

REVIEW DRAWING NUMBERS