

Rittal – The System.

Faster – better – everywhere.

Quarter turn Cable collection claw – DK 9969.600

Date : May 24, 2018

ENCLOSURES

POWER DISTRIBUTION

CLIMATE CONTROL

IT INFRASTRUCTURE

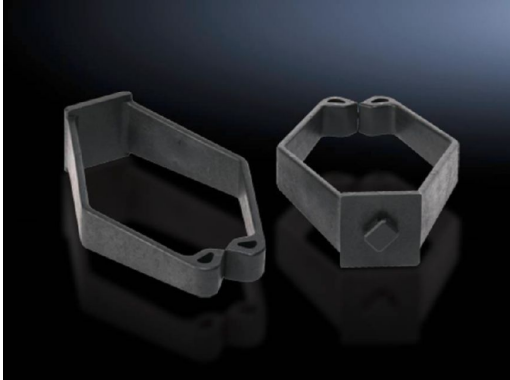
SOFTWARE & SERVICES

FRIEDHELM LOH GROUP



Quarter turn Cable collection claw – DK 9969.600

created: 24.05.2018 build on www.rittal.com/us-en



Product description

Description: Collection claw organizes cables and can attach to the enclosure frame and EIA rails.

Material: Plastic

Color: Black

Product features

Dimensions: Width: 76.2 mm (3 ")

Bracket dimensions: Height: 32 mm (1.3 ")
Depth: 113 mm (4.4 ")

Packaging unit: 10 Pack

Weight/packaging unit: 0.91 kg (2 lb.)

EAN: 38271