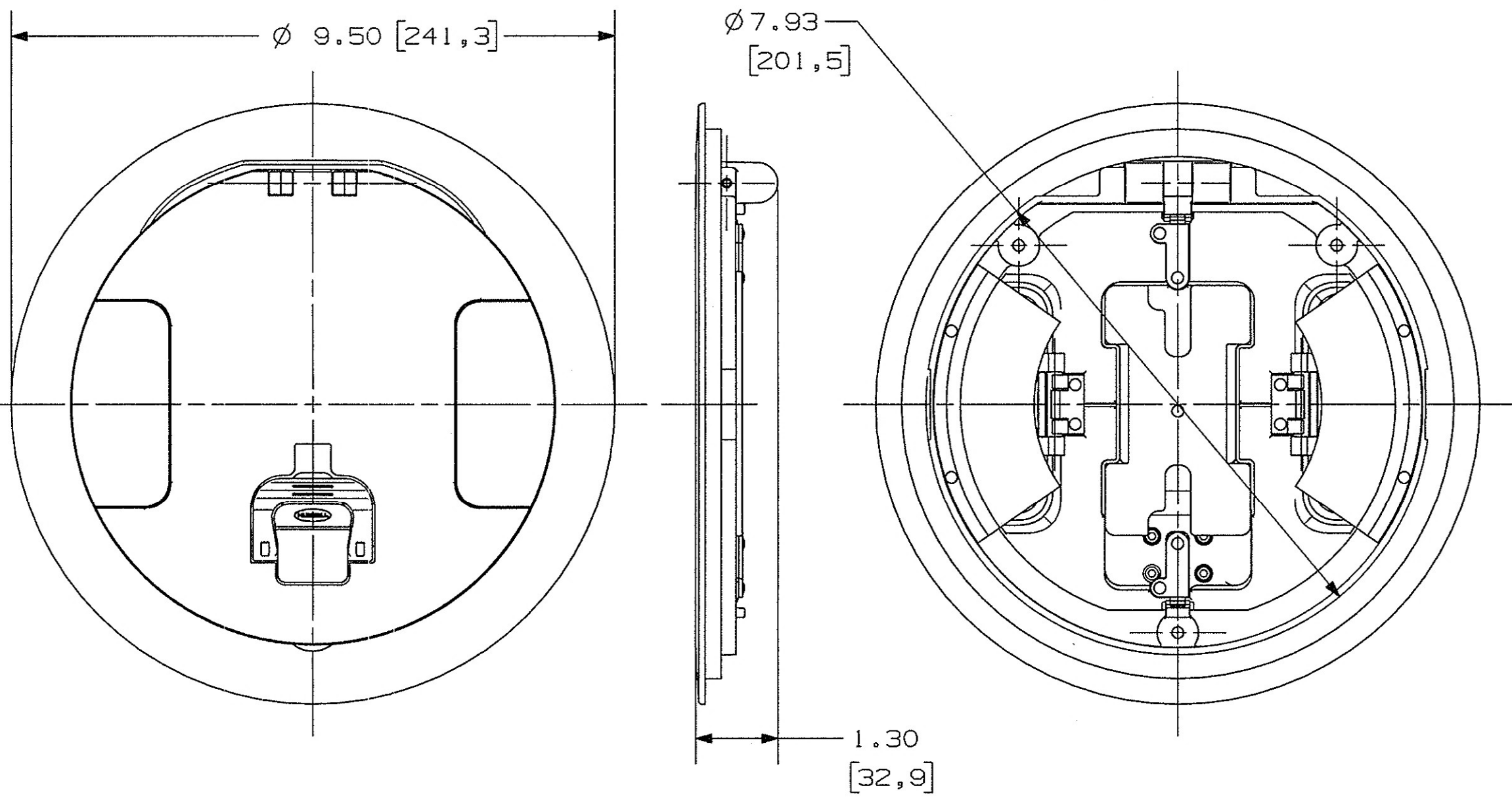


M-11914 1



CATALOG NUMBER	FINISH
S1R8CVRBLK	BLACK POWDER COAT PAINT
S1R8CVRNKL	SATIN NICKEL PLATE
S1R8CVRALU	BRUSHED ALUMINUM
S1R8CVRBRZ	BRONZE PLATED
S1R8CVRBRS	BRASS PLATED

NOTES:  
 1) ALL DIMENSIONS ARE IN INCHES AND [MILLIMETERS]  
 2) SUPPLIED WITH (3) MOUNTING SCREWS (NOT SHOWN).

LIST OF PARTS

DESCRIPTION	MATERIAL	FINISH
FLANGE RING	ALUMINUM	SEE TABLE
MAIN DOOR	ALUMINUM	SEE TABLE
ACCESS DOORS	ALUMINUM	SEE TABLE
HANDLE	ALUMINUM	SEE TABLE
HANDLE BEARING BLOCK	ALUMINUM	SEE TABLE
LINKS	ALUMINUM	SEE TABLE
SLIDERS	ALUMINUM	SEE TABLE
DOOR GASKETS	FOAM RUBBER	BLACK
MOUNTING SCREWS	STEEL	ZINC PLATE
DRIVE SCREWS	STEEL	ZINC PLATE
FIRE BARRIER	FIRE BAR. MATL.	NATURAL
SPRINGS	STEEL	ZINC PLATE
DOWEL PINS	STEEL	ZINC PLATE
SLIDER RETAINERS	STEEL	ZINC PLATE
RATCHET PLATES	STEEL	ZINC PLATE
RETAINER PLATES	STEEL	ZINC PLATE
WEATHERSTRIP	ALUM./NYLON	PLAIN/BLACK
CAP SCREWS	STEEL	ZINC PLATE
FIRE BARRIER COVER	STEEL	ZINC PLATE

DIMENSION SHEET FOR CAT. NO. SEE TABLE

REPAIRABLE  NON-REPAIRABLE

1	RELEASED PER DCN18435	12/14/11
SYM	REVISIONS	APP DATE

THE DESIGN AND DIMENSIONS OF THE PRODUCT SHOWN ON THIS DRAWING ARE SUBJECT TO CHANGE WITHOUT NOTICE

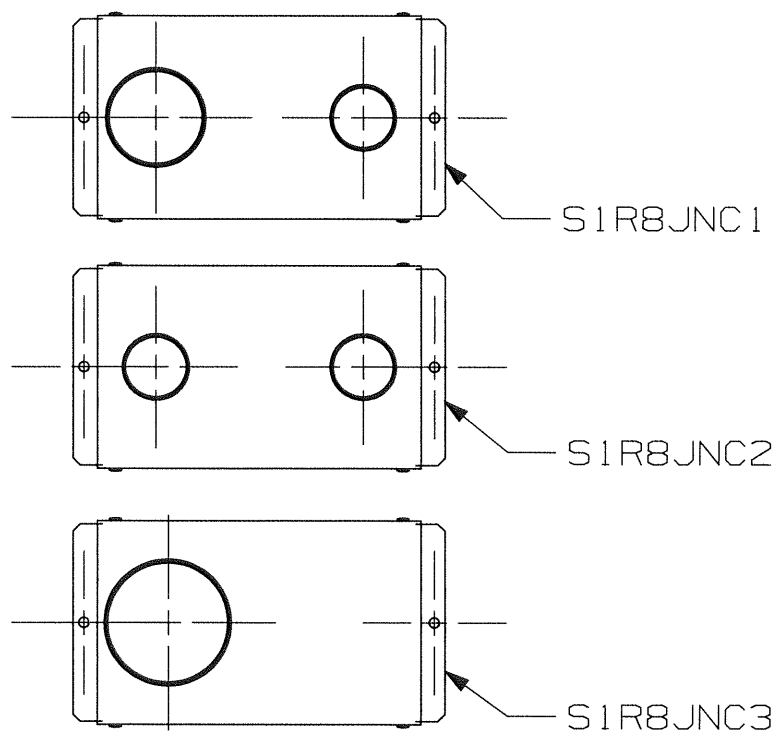
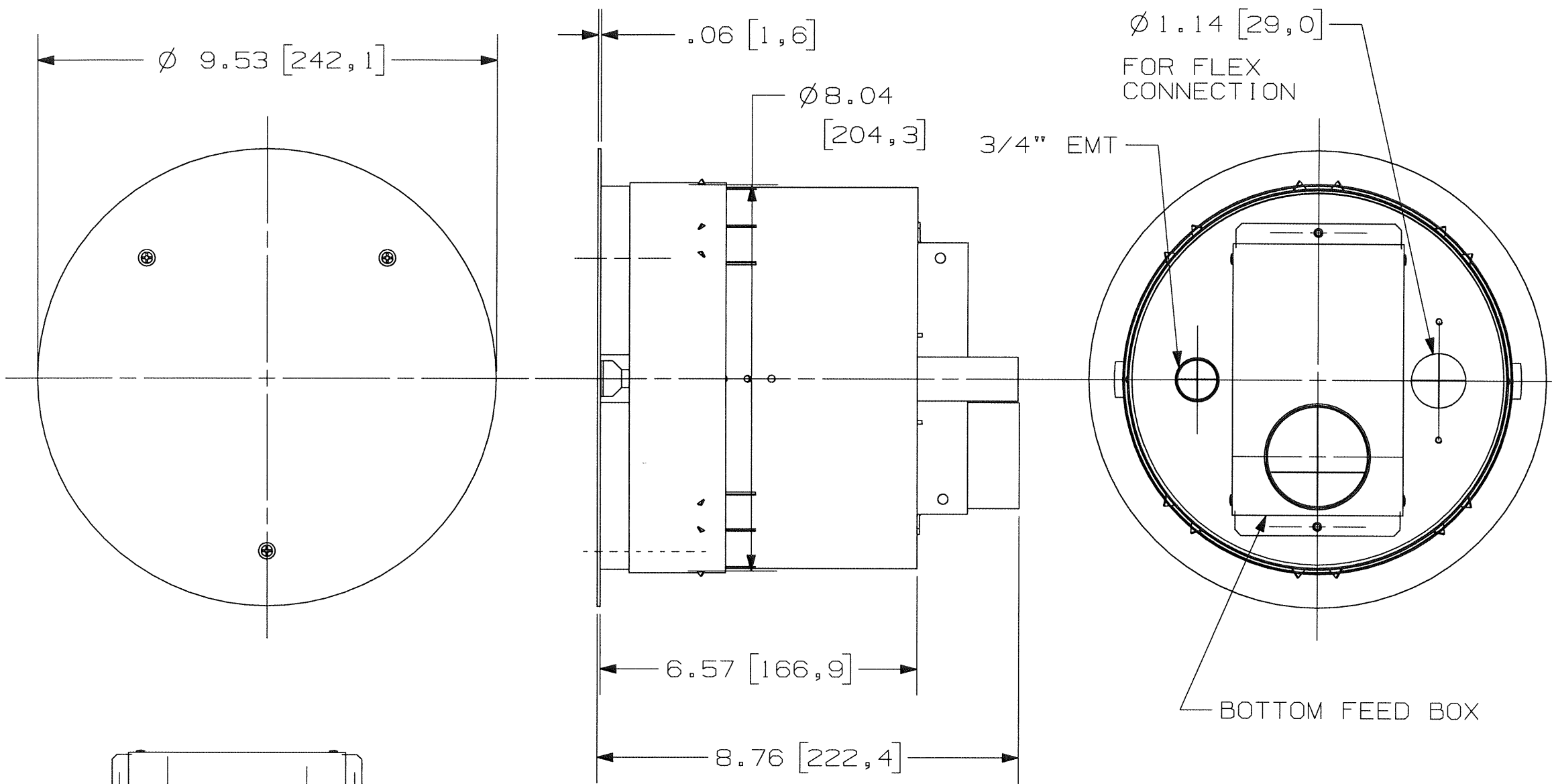
TITLE COVER, FIRE RATED POKE THROUGH, 8 INCH DIAMETER

TOLERANCES UNLESS OTHERWISE SPECIFIED FRACTIONS ± 1/64 DECIMALS ± .005 ANGLES ± 2°	WIRING DEVICE-KELLEMS HUBBELL INCORPORATED BRIDGEPORT, CT	
	DR. BY SRE	APP. BY <i>[Signature]</i>
	TR. BY	SCALE 1:2
	CHK'D BY <i>[Signature]</i>	DATE 6/9/11

B M-11914 1



M-11921 5



CATALOG NUMBER	BOTTOM FEED CAT. NO.	BOTTOM FEED CONDUIT SIZES
S1R8PTFIT1	S1R8JNC1	1" & 1-1/2 EMT
S1R8PTFIT2	S1R8JNC2	(2) 1" EMT
S1R8PTFIT3	S1R8JNC3	2" EMT

NOTES:  
 1) ALL DIMENSIONS ARE IN INCHES AND [MILLIMETERS]  
 2) ALL DIMENSIONS ARE COMMON TO ALL CATALOG NUMBERS. BOTTOM FEED BOXES VARY AS SPECIFIED.  
 3. ALL UNITS ARE SHIPPED WITH JUNCTION BOX SUB-ASSY (S1R8JNCBOX) SHIPPED LOOSELY. SEE M-11989 FOR DIMENSIONS.

LIST OF PARTS		
DESCRIPTION	MATERIAL	FINISH
CAN WELDMENT	STEEL	ZINC PLATE
INSTALLATION PLATE	STEEL	ZINC PLATE
SUB-PLATE MTG. PLATE	STEEL	WHITE PAINT
STANDOFFS	STNLS. STL.	--
FIRE BARRIER, UPPER	FIRE BAR. MATL.	NATURAL
FIRE BARRIER, LOWER	FIRE BAR. MATL.	NATURAL
WASHERS	FIBER	RED
MOUNTING SCREWS	STEEL	ZINC PLATE
DIVIDERS	STEEL	ZINC PLATE
SPACER	FIRE BAR. MATL.	BLACK
TAPE	PLASTIC	YELL./BLK.

NO.	DESCRIPTION	APP.	DATE
5	ADDED SHEET 2 PER DCN23387	AD	10/18/17
4	IN PARTS LIST- FOR STANDOFF "FINISH" -- WAS ZINC PLATE PER DCN 21112. MYA	PJB	4/8/15
3	UPDATED IMAGES DCN20245		12/13/13
2	UPDATED IMAGES DCN18755		4/13/12
1	RELEASED PER DCN18435		12/14/11

SYM	REVISIONS	APP	DATE

THE DESIGN AND DIMENSIONS OF THE PRODUCT SHOWN ON THIS DRAWING ARE SUBJECT TO CHANGE WITHOUT NOTICE

TITLE SERVICE FITTING, FIRE RATED POKE THROUGH, 8 INCH DIAMETER

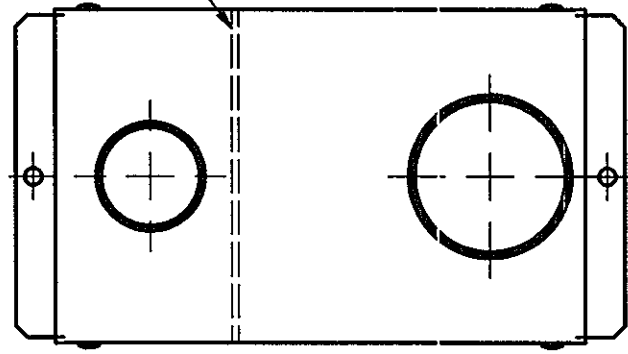
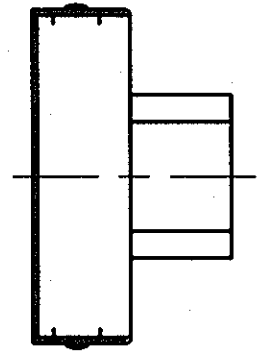
TOLERANCES UNLESS OTHERWISE SPECIFIED	WIRING DEVICE-KELLEMS HUBBELL INCORPORATED SHELTON, CT	
.XX = ±.01	DR. BY SRE	APP. BY
.XXX = ±.005	TR. BY	SCALE 1:2
ANGLES = ±2°	CHK. BY	DATE 6/10/11

DIMENSION SHEET FOR CAT. NO. M-11921  
 REPAIRABLE  NON-REPAIRABLE



M-11989 6

REMOVABLE DIVIDER

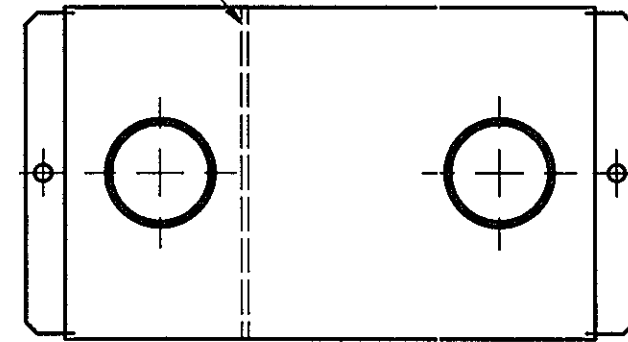
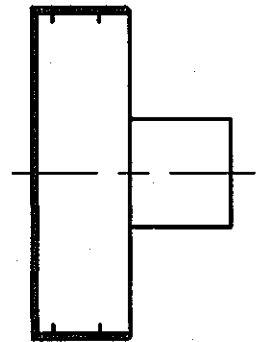


S1R8JNC1

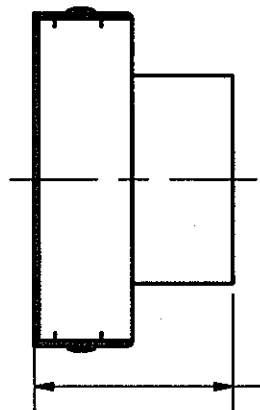
LIST OF PARTS		
DESCRIPTION	MATERIAL	FINISH
BOX WELDMENT	STEEL	ZINC PLATE
EMT TUBE	STEEL	ZINC PLATE
FIRE BARRIER	FIRE BAR. MATL.	NATURAL
MOUNTING SCREWS	STEEL	ZINC PLATE
DIVIDER	GALV. STEEL	

DIMENSION SHEET FOR CAT. NO.

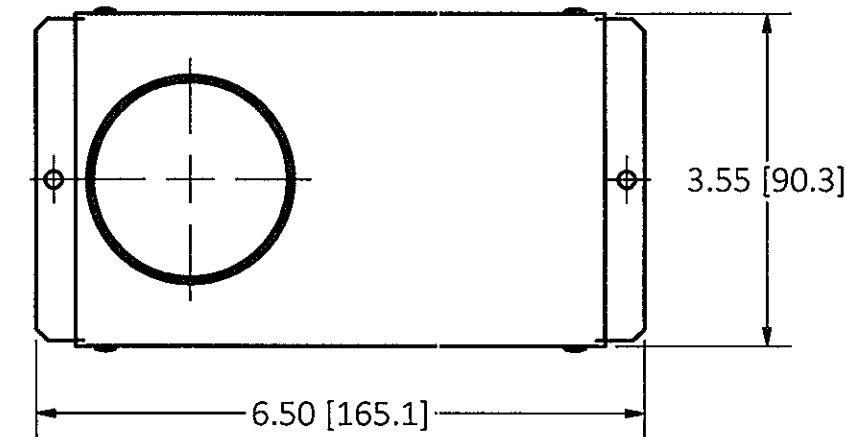
REMOVABLE DIVIDER



S1R8JNC2



2.12 [54.0]



3.55 [90.3]

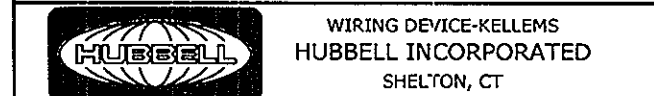
6.50 [165.1]

S1R8JNC3

REV	DESCRIPTION	APP	DATE
6	ADDED CATALOG NO. S1R8JNC12 AND VIEW TO SHEET 4 OF 4 PER DCN# 22946.	EM <i>m3</i>	3/7/17
5	REDRAWN IN INVENTOR. ADDED S1R8JNC10 & 11 IN SHEET 4. PER DCN# 22697		10/18/16

THE DESIGN AND DIMENSIONS OF THE PRODUCT SHOWN ON THIS DRAWING ARE SUBJECT TO CHANGE WITHOUT NOTICE. DIMENSIONS ARE IN INCHES [mm].

TITLE  
BOTTOM JUNCTION BOXES, FIRE RATED POKE THRU. 8 INCH DIA.



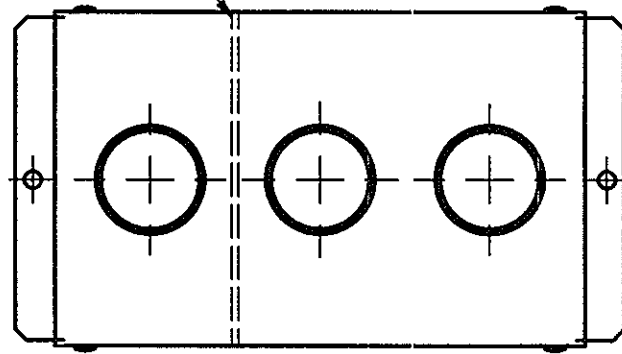
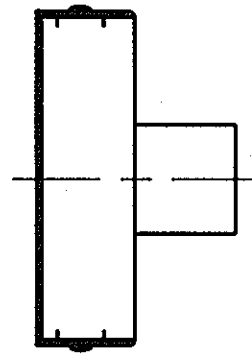
TOLERANCES UNLESS OTHERWISE SPECIFIED XX = ±.01 .XXX = ±.005 ANGLE TOL. #2	DR. BY EMD	SCALE 1/2
	CHK. BY	DATE 10/18/16

CATALOG NUMBER	BOTTOM FEED CONDUIT SIZES
S1R8JNC1	1" & 1-1/2" EMT
S1R8JNC2	(2) 1" EMT
S1R8JNC3	2" EMT

NOTES:  
1) ALL DIMENSIONS ARE IN INCHES AND [MILLIMETERS]  
2) ALL DIMENSIONS ARE COMMON TO ALL CATALOG NUMBERS. BOTTOM FEED BOXES VARY AS SPECIFIED.  
3) (2) MOUNTING SCREWS SHIPPED LOOSELY (NOT SHOWN).

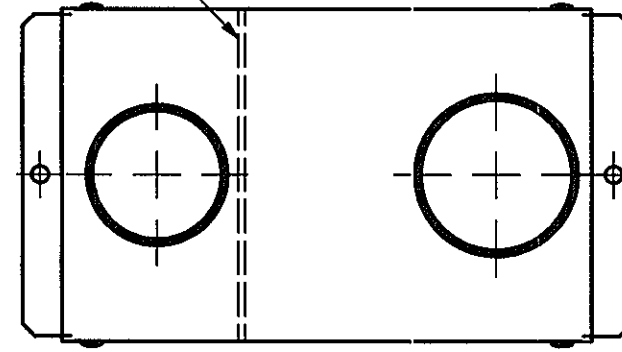
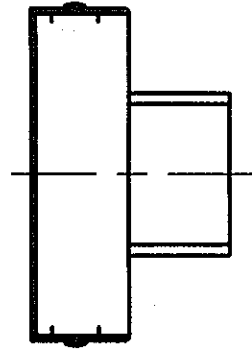
M-11989 6

REMOVABLE DIVIDER



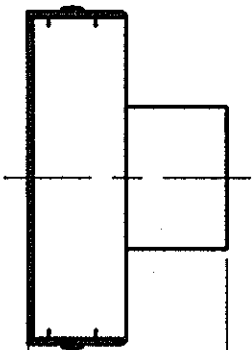
S1R8JNC4

REMOVABLE DIVIDER

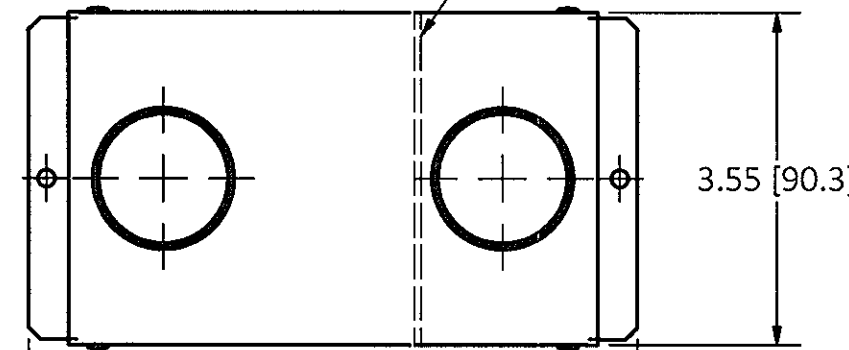


S1R8JNC5

REMOVABLE DIVIDER



2.12 [54.0]



6.50 [165.1]

3.55 [90.3]

S1R8JNC6

NOTES:

- 1) ALL DIMENSIONS ARE IN INCHES AND [MILLIMETERS]
- 2) ALL DIMENSIONS ARE COMMON TO ALL CATALOG NUMBERS. BOTTOM FEED BOXES VARY AS SPECIFIED.
- 3) (2) MOUNTING SCREWS SHIPPED LOOSELY (NOT SHOWN).

CATALOG NUMBER	BOTTOM FEED CONDUIT SIZES
S1R8JNC4	(3) 1" EMT
S1R8JNC5	1-1/2" & 1-1/4" EMT
S1R8JNC6	(2) 1-1/4" EMT

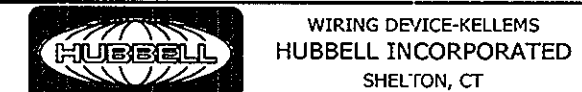
LIST OF PARTS

DESCRIPTION	MATERIAL	FINISH
BOX WELDMENT	STEEL	ZINC PLATE
EMT TUBE	STEEL	ZINC PLATE
FIRE BARRIER	FIRE BAR. MATL.	NATURAL
MOUNTING SCREWS	STEEL	ZINC PLATE
DIVIDER	GALV. STEEL	

REV	DESCRIPTION	APP	DATE
6	ADDED CATALOG NO. S1R8JNC12 AND VIEW TO SHEET 4 OF 4 PER DCN# 22946.	EM <i>m3</i>	3/7/17
5	REDRAWN IN INVENTOR. ADDED S1R8JNC10 & 11 IN SHEET 4. PER DCN# 22697		10/18/16

THE DESIGN AND DIMENSIONS OF THE PRODUCT SHOWN ON THIS DRAWING ARE SUBJECT TO CHANGE WITHOUT NOTICE. DIMENSIONS ARE IN INCHES [mm].

TITLE  
BOTTOM JUNCTION BOXES, FIRE RATED POKE THRU. 8 INCH DIA.



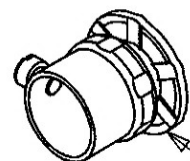
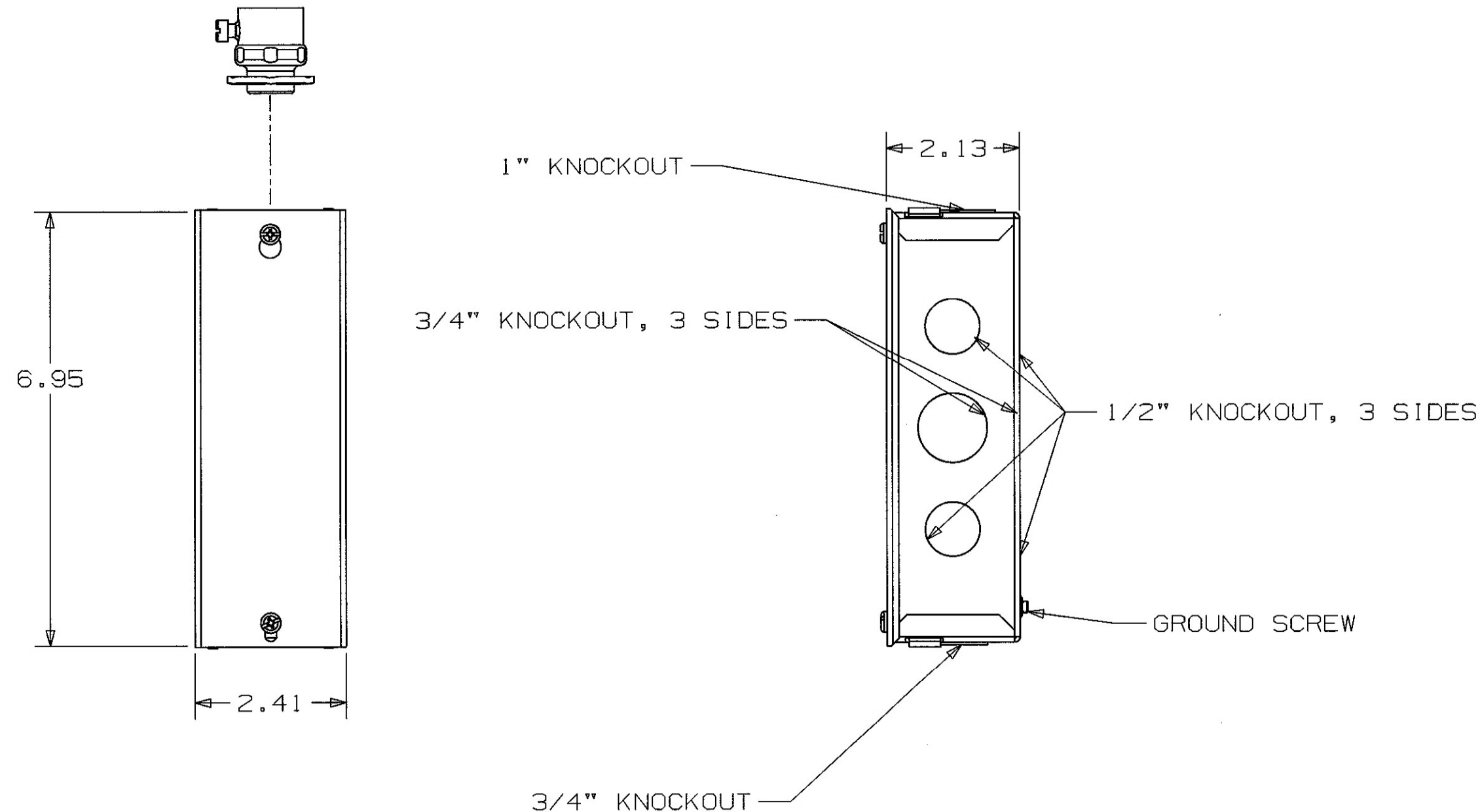
TOLERANCES UNLESS OTHERWISE SPECIFIED .XX = ± .01 .XXX = ± .005 ANGLE TOL. ±2°	DR. BY EMD	SCALE 1/2
	CHK. BY	DATE 10/18/16







M-11000 2



(1) 3/4" AND (1) 1" CONDUIT SUPPLIED LOOSE INSIDE JUNCTION BOX

NOTES:

1. BOX VOLUME: 27 IN<sup>3</sup> / 442 CM<sup>3</sup>
2. PART IS UL/CUL LISTED

CODE 74545

LIST OF PARTS

DESCRIPTION	MATERIAL	FINISH
JUNCTION BOX COVER	STEEL	GALVANIZE
JUNCTION BOX	STEEL	GALVANIZE
#8 PAN HEAD SCREW	STEEL	ZINC
#10 GROUND SCREW	STEEL	GREEN FINISH
1" CONDUIT ADAPTOR	STEEL	ZINC
3/4" CONDUIT ADAPTOR	STEEL	ZINC

SYM	REVISIONS	APP	DATE
2	UPDATED KNOCKOUT DETAILS PER DCN 14930	SM	6/26/08
1	RELEASED PER DCN 14521		3/26/08

THE DESIGN AND DIMENSIONS OF THE PRODUCT SHOWN ON THIS DRAWING ARE SUBJECT TO CHANGE WITHOUT NOTICE

TITLE JUNCTION BOX ASSY SYSTEM ONE

TOLERANCES UNLESS OTHERWISE SPECIFIED	WIRING DEVICE-KELLEMS HUBBELL INCORPORATED BRIDGEPORT, CT	
FRACTIONS ±1/64	DR. BY MSS	APP. BY SM
DECIMALS ±.005	TR. BY	SCALE 1:1
ANGLES ±2°	CHK'D BY	DATE 3/26/08

DIMENSION SHEET FOR CAT. NO. M-11000  
 SIFRPT JOB  
 REPAIRABLE  NON-REPAIRABLE