

AL-12070

Aisle Lighting

LED Dock Light Industrial Dock Light

application

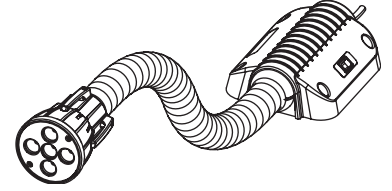
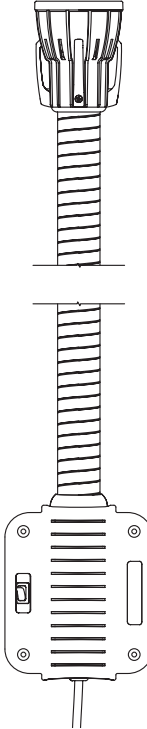
- An energy saving alternative to the traditional 150 Watt PAR unit.
- Consumes only 15 Watts and save 135 Watts when compared to the 150 Watt PAR dock light.

construction & features

- Die cast aluminum head assembly.
- All metal construction for extended life.
- Flexible arm is infinitely adjustable and almost indestructible.
- Painted "safety yellow" after fabrication for high visibility.
- Shipped fully assembled with a replaceable LED module included.

electrical

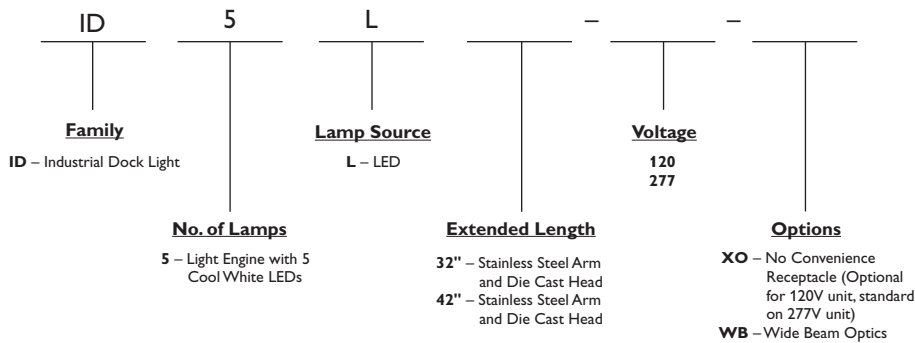
- Certified by ETL to meet UL 153 and CSA C22.2 No. 12 standards.
- Electronic LED driver.
- Suitable for damp locations.
- Meets NEC and OSHA general safety requirements.



Specifier's Reference

Project
Type
Model No.
Comments

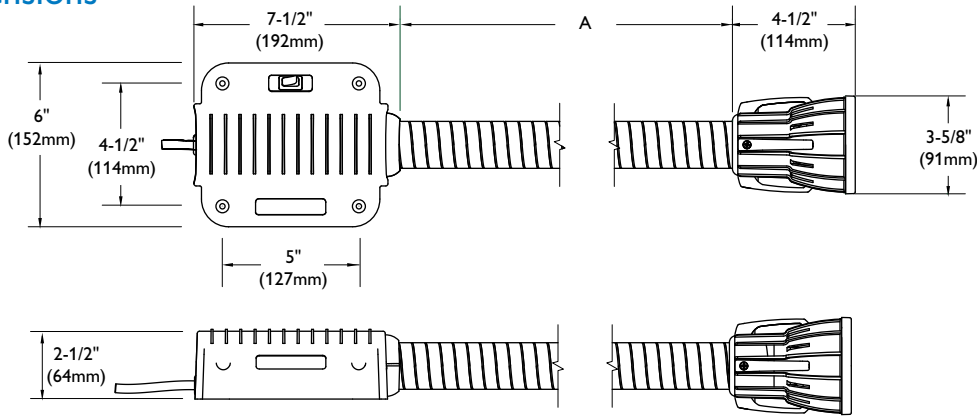
Green Choice: ID5L32-120



AL-12070

dimensions

LED Dock Light



LED Dock Light Dimensions		
	32"	42"
A	28-1/8"	38-1/8"

photometry

LED Dock Light

Catalog No. ID5L32-120
 Test No. ITL62971

Footcandles at 52.8'

2.4	2.9	3.5	3.9	3.9	3.5	2.9	2.4
3.0	3.8	4.6	5.3	5.3	4.7	3.8	3.1
3.6	4.6	5.6	6.3	6.3	5.7	4.6	3.7
4.0	5.3	6.5	7.2	7.3	6.5	5.3	4.1
4.1	5.2	6.4	7.2	7.2	6.5	5.3	4.1
3.6	4.6	5.7	6.5	6.5	5.8	4.7	3.7
2.9	3.7	4.4	5.0	5.0	4.5	3.7	3.0
2.2	2.7	3.3	3.6	3.7	3.3	2.8	2.3
1.7	2.0	2.3	2.5	2.5	2.3	2.0	1.7

Footcandles at 26'

1.8	2.1	2.1	1.9	1.5	1.2	1.0	0.9
3.4	4.6	4.8	3.7	2.5	1.7	1.2	1.0
7.1	10.6	11.3	8.0	4.6	2.4	1.5	1.1
12.1	19.7	21.0	14.0	7.2	3.4	1.8	1.2
15.5	24.9	26.5	17.9	8.4	3.7	1.9	1.2
12.0	19.5	20.7	13.8	6.9	3.3	1.8	1.2
6.7	10.0	10.6	7.6	4.4	2.5	1.6	1.1
3.4	4.3	4.5	3.6	2.6	1.7	1.3	1.0
1.9	2.1	2.2	2.0	1.6	1.3	1.1	0.9

Footcandles at 1'

0.1	0.2	0.1	0.1	0.1	0.0	0.0	0.1
0.4	0.4	0.2	0.1	0.1	0.0	0.0	0.1
1.9	1.3	0.6	0.2	0.1	0.1	0.0	0.1
11.7	5.6	1.6	0.5	0.2	0.1	0.1	0.1
131	18.7	3.1	0.7	0.2	0.1	0.1	0.1
99.0	17.4	3.0	0.7	0.2	0.1	0.1	0.1
9.4	4.9	1.4	0.4	0.1	0.1	0.0	0.1
1.4	1.1	0.5	0.2	0.1	0.1	0.0	0.1
0.4	0.3	0.2	0.1	0.1	0.1	0.0	0.1



© 2013 Koninklijke Philips Electronics N.V. All rights reserved.
 Specifications are subject to change without notice.
www.philips.com/luminaires

AL-12070 03/13

Philips Lighting Company
 200 Franklin Square Drive
 Somerset, NJ 08873
 Phone: 855-486-2216

Philips Lighting Company
 281 Hillmount Road
 Markham ON, Canada L6C 2S3
 Phone: 800-668-9008