



[®] *ExpressLine* HUBBELL

2016

Hubbell Canada LP
ExpressLine



HUBBELL
Outdoor Lighting



Columbia
LIGHTING



HUBBELL
Lighting



HUBBELL
Control Solutions



SPALDING
LIGHTING

LED Facade Floodlights



- Adjustable knuckle mount
- 1/2" threaded hub, brass for corrosion resistance
- Impact resistant glass
- Covers 3 x set back with uniform light
- Length: 1ft / 2ft
- Dark bonze finish



Excellent for small floodlighting applications: signs, facades/wall washing, landscape accent, building entrances, general area illumination & security lighting. Compact size allows for concealment or blending into the landscape environment.

Catalog #	Equivalency		Delivered Lumens	Watts (120V)	Lumens Per Watt	Weight	Beam Pattern	CCT	Voltage	Certification
ALF6LU5KBZ	MH/HPS	50W	905	10.1	90	4.0 lbs	6x5	5000K	120-277V	IP65
	CFL	42W								
ALF12LU5KBZ	MH/HPS	70W	1913	21.4	89	8.0 lbs	6x5	5000K	120-277V	IP64
	CFL	57W								

LED Decorative Floodlights



- Adjustable knuckle mount, 1/2" x 14 NPS threaded
- Rugged die cast aluminum housing
- Surface & slipfit mounting accessories available
- Visor & vandal shield accessories available
- PC1 version: c/w 120V photocell
- Dark bonze finish



Compact 7 LED & Medium 14 LED. Vented housing isolates LED modules from driver maximizing product light and performance. Easy mounting & adjustability. Excellent for small floodlighting applications such as safety/security, facade, general area illumination & signs. Operating temperature of -35°C to 40°C.

Catalog #	Equivalency		Delivered Lumens	Watts (120V)	Lumens Per Watt	Weight	Beam Pattern	CCT	Voltage	Certification
FSL7	MH/HPS	70W	2448	26	94	4.0 lbs	Wide (6x6)	5000K	120-277V	IP66
FSL7PC1	CFL	57W							120V	
FML14	MH/ HPS	150W	4285	53	81	6.0 lbs	Wide (6x6)	5000K	120-277V	IP65
FML14PCU										

Miniliter LED



- Tempered, impact resistant glass lens
- Heavy duty steel yoke, adjustable with stainless steel hardware
- Stainless steel latches, tool-free access
- 0-10V dimming driver
- 347V available (standard lead times apply)
- Die cast aluminum housing
- Wide (W) or Medium (M) distribution



Medium 30 LED floodlight for ground, wall or pole mounted applications. 10KA surge protector. Miniliter will uniformly light the task. Wide: four times set-back coverage means less units are needed. Suitable for -40°C to 40°C.

Catalog #	Equivalency		Delivered Lumens	Watts (120V)	Lumens Per Watt	Weight	Beam Pattern	CCT	Voltage	Certification
MHSY30LU5KWBZ	MH/HPS	175W / 150W	6164	71	87	20 lbs	6x5	5000K	120-277V	UL1598 for wet location
MHSY30LU5KMBZ	Quartz	500W	6233	71	88		4x4	5000K	120-277V	

LED Medium Decorative Flood



- Heavy duty steel yoke with adjustable stainless steel hardware
- Louver, visor & vandal accessories available
- Rugged die cast aluminum housing
- 3 ft SEOW cord included
- Surface & slipfit mounting accessories available
- Dark bonze finish



28 LED. Vented housing isolates LED module from the LED driver maximizing product life & performance. Ideal for applications such as safety/security, gate/vehicle entrance, facade, general area, task illumination or signs. Operating temperature of -35°C to 40°C.

Catalog #	Equivalency		Delivered Lumens	Watts (120V)	Lumens Per Watt	Weight	Beam Pattern	CCT	Voltage	Certification
	MH/HPS	250W								
FLL28L	Quartz	500W	9557	95	100.6	22 lbs	Wide (6x6)	5000K	120–277V	IP65

LED Large Decorative Flood



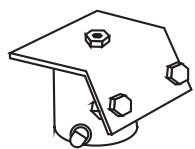
- Heavy duty steel yoke with adjustable stainless steel hardware
- Louver, visor & vandal accessories available
- Rugged die cast aluminum housing
- 3 ft SEOW cord included
- Surface & slipfit mounting accessories available
- Dark bonze finish



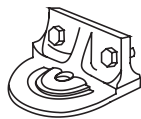
56 LED. Vented housing isolates LED module from the LED driver maximizing product life & performance. Ideal for applications such as safety/security, equipment yards, parking, facade, general area, task illumination or signs. Operating temperature of -35°C to 40°C.

Catalog #	Equivalency		Delivered Lumens	Watts (120V)	Lumens Per Watt	Weight	Beam Pattern	CCT	Voltage	Certification
	MH/HPS	400W								
FXL56L	Quartz	1000W	21095	187	113	36 lbs	Wide (6x6)	5000K	120–277V	IP65

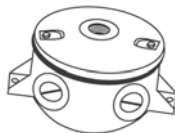
Floodlight mounting accessories.



4024C



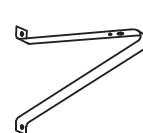
4090



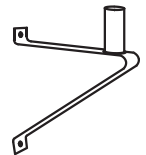
S329B



S302M51



4040

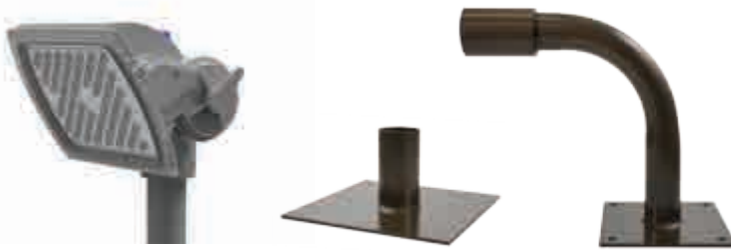


4041

Wall, surface and pole top brackets allow Expressline floodlights to be mounted in virtually any application. For additional accessories visit www.hubbelloutdoor.com. Under 'Products' drop down menu, select 'Floodlighting'. Scroll down to 'Mounting Brackets' & select.

Catalog #	Description	For use with
4024C	Steel slipfitter for 2" pipe, 2–3/8" OD. Bronze.	MHSY, FLL & FXL
4090	Heavy-duty cast iron fitting. For flat surface installation.	MHSY, FLL & FXL
S329B	4" round wet location j-box with cover – 1/2" hubs.	ALF, FSL, FML
S302M51	Slipfits 1–1/2" or 2" pipe (1.9" OD or 2 3/8" OD) with 1/2" N.P.S.M. hub; Bronze	ALF, FSL, FML
4040	Heavy-duty steel, wall/pole bracket, bronze, 7/8" mounting hole	MHSY, FLL & FXL
4041	Heavy-duty steel, wall/pole bracket, bronze. 2" pipe (2 3/8" OD) tenon fitting. Requires S302M51 or 4024C.	All

Alpha Flood



- 5000K
- SF3 - 2 3/8" O.D. Tenon mounting
- Toolless tilt adjustment
- Die-cast aluminum housing
- Salt spray tested paint finish
- Dark bronze
- Surge & Lifeshield protection



Alpha LED high performance LED floodlight, die cast aluminum housing, c/w adjustable knuckle to slip fit 2 3/8" to 3" O.D. tenon. 0-10V dimming driver, surge & Lifeshield circuit protection against excessive temperature. Suitable for -40°C to 40°C.

Part No.	Description	Equivalency		Delivered Lumens	Watts (120V)	Lumens Per Watt	Weight	Beam Spread	Voltage	
93059904	ALD/72NB170/5K/5X5/UNV/SF3/BZT	MH	750W	16107	170	94	30 lbs	5x5	120-277V	
93061743	ALD/72NB170/5K/5X5/347/SF3/BZT	MH	750W	16107	170	95	30 lbs	5x5	347V	
93059902	ALD/72NB220/5K/5X5/UNV/SF3/BZT	MH	1000W	19240	220	87.5	30 lbs	5x5	120-277V	
93061741	ALD/72NB220/5K/6X6/UNV/SF3/BZT	MH	1000W	20425	220	93	30 lbs	6x6	120-277V	
93061742	ALD/72NB220/5K/6X6/347V/SF3/BZT	MH	1000W	20425	220	93	30 lbs	6x6	347V	
93059905	AL/PM/BZT	Pier (surface) mount tenon accessory					5.0 lbs			
93059906	AL/WM/BZT	Wall mount tenon accessory					5.0 lbs			



Lighting Products
CLEARANCE CORNER

Visit www.hubbell-canada.com/clearancecorner for a list of Hubbell Lighting products reduced to clear and a listing of Hubbell Lighting agent representatives across Canada. Any items of interest, contact your regional Hubbell Lighting agent for pricing, assistance with wholesale purchase, inventory availability, mounting & control accessories & facilitating delivery.

- Updated monthly.
- All products subject to prior sales.
- All products sold through electrical wholesale.
- Standard terms and conditions of sale apply.
- All sales are final.



NRG300 Series



- Center-pin screws for tamper-resistant applications
- PC version: c/w 120V photocell
- 4000K version available (standard lead times apply)
- Dark bronze
- 80 CRI, 60,500 hrs rated life/L94



Polycarbonate lens provides vandal resistance & lateral spread of 5 times mounting height. Cast aluminum back housing provides solid wall mounting. 1/2" bottom knockout allows surface conduit wiring option.

Catalog #	Equivalency		Delivered Lumens	Watts (120V)	Lumens Per Watt	Weight	CCT	Voltage	Certification
NRG356L5KU	MH	50W	1532	18	76	5.0 lbs	5000K	120–277V	UL1598 for wet location
NRG356L5KUPC	HPS	70W						120V	

Perimaliter LED



PGM3



PVL3

- PGM3 - die cast hsg with prismatic borosilicate glass lens
- PVL3 - die cast hsg with polycarbonate lens
- 1/2" side hubs for surface conduit option
- 3K, 4K & motion sensor available (standard lead times apply)
- 350mA driver available - 50% output at lower wattage (standard lead times apply)
- Dark bronze



Rugged, durable LED wallpack. Ideal for perimeter/area lighting featuring wide lateral spacing, vandal resistant glass or polycarbonate lens. Ideal for factories, warehouses, distribution centers, parking structures & retail/commercial. Suitable for -40°C to 40°C. Wide type III uniform distribution.

Catalog #	Equivalency		Delivered Lumens	System Watts	Lumens Per Watt	Weight	CCT	Voltage	Certification
PGM3180L5KUDB	MH	150	7160	72	99	14.0 lbs	5000K	120–277V	UL1598 for wet location
PGM3180L5KFDB						15.0 lbs		347V	
PVL3180L5KUDB	HPS	150	5978	72	83	12.0 lbs		120–277V	
PVL3180L5KFDB						13.0 lbs		347V	

LED Linear Wall Mount



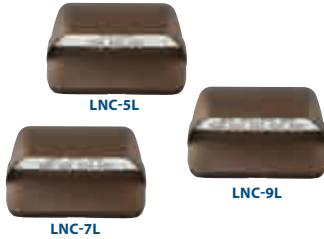
- Aluminum cover c/w quick mount plate
- C/W universal adapter for 3 1/2" or 4" j-box
- PC version: c/w 120V photocell
- Impact resistant glass
- Length: 1ft
- Dark bronze finish



Featuring an adjustable pivot from 075°. Excellent for applications such as over doorways, pathway or small area illumination. The compact size allows ALFW6LU to blend into the environment.

Catalog #	Equivalency		Delivered Lumens	System Watts	Lumens Per Watt	Weight	CCT	Voltage	Certification
ALFW6LU5KBZ	MH/HPS	50W	905	10.7	85	4.0 lbs	5000K	120–277V	IP65
ALFW6LU5KBZPC	CFL	42W						120V	

LNC Small Wallpack, Zero Uplight



- Decorative die cast aluminum housing
- Housing design provides excellent thermal management
- Type II & IV distribution, alternate housing colour available (standard lead times apply)
- Optional diffuser lens shipped with every LNC
- 3K, 4K & installed photocell available (standard lead times apply)
- PC version: c/w 120V photocell
- Dark bronze



Compact LNC is designed for entry/perimeter illumination for safety, security & identity. Mounts over recessed jbox. Surface conduit access through top & bottom 1/2" knockout. Typical mounting height is up to 12 feet with four time fixture spacing with acrylic diffuser installed. Suitable for -40°C to 40°C.

Catalog #	Equivalency		Delivered Lumens	System Watts	Lumens Per Watt	Weight	CCT	Voltage	Distribution	Certification
LNC5LU5K	MH/HPS	50	967	12.9	75	5.0 lbs	5000K	120-277V	III Full cutoff	UL1598 for wet location
LNC5LU5KPC			967	12.9	75	5.0 lbs		120V		
LNC7LU5K31	MH/HPS	70	1389	16.6	83	5.0 lbs		120-277V		
LNC9LU5K31			1745	22	79	5.0 lbs		120-277V		
LNC9LU4K31	MH/HPS	100	1768	22	80	5.0 lbs	4000K	120-277V		

LNC2 Medium Wallpack, Zero Uplight



- Decorative die cast aluminum housing
- Housing design provides excellent thermal management
- Type II & IV distribution, alternate housing colour available (standard lead times apply)
- Optional diffuser lens shipped with every LNC
- 3K, 4K, motion sensor & photocell available (standard lead times apply)
- PC or PC6: c/w 120V or 347V photocell
- Dark bronze



LNC2 is a larger, more powerful version of the LNC. Mounts over recessed jbox. Typical mounting height is up to 15 feet with four time fixture spacing with acrylic diffuser installed. Suitable for -40°C to 40°C. Designed for entry/perimeter illumination for safety, security & identity.

Catalog #	Equivalency		Delivered Lumens	System Watts	Lumens Per Watt	Weight	CCT	Voltage	Distribution	Certification
LNC212LU5K31	MH/HPS	150W	2420	29	83	14.3 lbs	5000K	120-277V	III Full cutoff	UL1598 for wet location
LNC212LU5K31PC			2420	29	83					
LNC218LU5K31	MH/HPS	250W	3311	44.5	74	14.8 lbs		120-277V		
LNC218LU5K31PC			3311	44.5	74					
LNC212LF5K31	MH/HPS	150W	2420	33.7	72	14.3 lbs	347V	347V		
LNC212L65K31PC6			2420	33.7	72					

Glass Refractor Wallpacks



- Mid power LED for reduced glare
- 1/2" conduit entries on top & sides
- Polycarbonate shield option for 110L
- Wire guard option for 225L
- Hinged lens/door assembly
- Dark bronze



Perimeter lighting for safety & security. Use on factories, warehouses, self storage, commercial buildings, etc... Cast aluminum housing with borosilicate glass refractor softens light source & provides uniform distribution. Suitable for -30°C to 40°C. 225L (120-277V) DLC approved.

Catalog #	Equivalency		Delivered Lumens	System Watts	Lumens Per Watt	Weight	CCT	Voltage	Distribution	Certification
WGH110L4KUM	MH/HPS	250W	4888	53	92	11.0 lbs	4000K	120-277V	IV	UL1598 for wet location
WGH225L4KUL	MH/HPS	400W	10151	97	105	15.0 lbs		120-277V		
WGH225L4KCL			10474	111	94			347V/480V		

LED Dusk-to-Dawn


- Comes with prismatic acrylic refractor
- 56L - wall mount version
- 9L & 140L c/w 24" aluminum mast arm
- Comes with twist-lock photocell
- Die-cast aluminum housing
- Texture grey powder paint finish



Multipurpose dusk-to-dawn LED for general area, security, roadway & industrial lighting. ANSI 3G rated for vibration. Mast arm clamp adjusts to 23/8" or 15/8" diameter arm. DDL9L1 field rotatable asymmetric LED lens included for roadway/pathway applications. For operation in -35°C to 40°C ambient temperature.

Catalog #	Equivalency		Delivered Lumens	System Watts	Lumens Per Watt	Weight	CCT	Voltage	Certification
DDL9L1	MH/HPS	150W	3437	40	86	7.0 lbs	5000K	120V	UL1598 for wet location
DDL56L4K1NA	MH/HPS	150W	2906	30	97	7.0 lbs	4000K		
DDL140L1	MH/HPS	250W	5279	43.5	121	7.0 lbs	5000K		

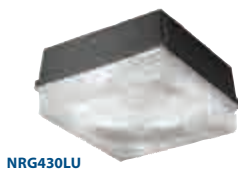
VAPORTITES
Wet location LED Vaportites


- Frosted glass globe for even, low glare light source
- Comes with removable cast aluminum guard
- Vandal resistant set screws
- VBGL - ceiling/pendant, VWGL- wall
- Rugged die-cast aluminum housing
- Grey powder paint finish



Wall / Ceiling/ Pendant entry. Corridor, tunnel, closet, stairwell, storage & security applications. Compact size ideal for traditional vaportite locations. 1/2" x 14 NPS threaded conduit entry (top & 4 sides). For operation in -30°C to 40°C ambient temperature.

Catalog #	Equivalency		Delivered Lumens	System Watts	Lumens Per Watt	Weight	CCT	Voltage	Certification
VBGL1	INC	150W	757	11	70	3.4	4000K	120-277V	IP66
VWGL1	CFL	32W				3.6			

SURFACE MOUNT
LED Ceiling


- 2 x 1/2" side hubs for surface conduit / internal thru wiring channel
- 0-10V dimming LED drivers
- 4K & 350mA reduce output available (standard lead times apply)
- Prismatic acrylic refractor
- Die-cast aluminum housing
- Dark Bronze housing



Energy saving, high performance commercial indoor & outdoor surface-mount lowbay. Ideal for applications such as mechanical rooms, utility areas, outdoor retail, covered loading docks & building entrances. Saves 60-80% compared to traditional metal halide sources. Suitable for -40°C to 40°C. 4000K version DLC approved.

Catalog #	Equivalency		Delivered Lumens	System Watts	Lumens Per Watt	Weight	CCT	Voltage	Certification
NRG430LU5KBZ	MH/HPS	250W	6122	70	87	14.0 lbs	5000K	120-277V	UL1598 for wet location

5" Round LED Surface Mount



- Diffuse impact resistant polycarbonate lens
- LED's powered directly with A/C voltage, no LED driver
- Aluminum heat sink housing
- 42,000 hrs at 70% lumen maintenance
- White housing finish



LiteBox Surface mount LED for new or retrofit applications. Installs on a 4" J-box. Suitable for wet location. Operating temperature -30° to 40°C.

Part #	Description	Equivalency		Delivered Lumens	System Watts	Lumens Per Watt	Weight	CCT	Voltage	CRI
BG1529200	LBS5LEDA6L30K9 WH	INC	65W	623	12.7	49	2.0 lbs	3000K	120V	90
BG1529300	LBSQ5LEDA6L30K9 WH	INC	65W	679	10.4	65	2.0 lbs	3000K	120V	90

7" Square & Round LED Surface Mount



- Diffuse impact resistant polycarbonate lens
- LED's powered directly with A/C voltage, no LED driver
- Black, bronze or metallic (zet) available (standard lead times apply)
- Aluminum heat sink housing
- 7 inch round or square
- 42,000 hrs at 70% lumen maintenance
- White housing finish



LiteBox Surface mount LED for new or retrofit applications. Both units can be installed on a 4" J-box. Also 4", 5" or 6" recessed downlight with the mounting kit accessory. Suitable for wet locations. Operating temperature -30° to 40°C.

Part #	Description	Equivalency		Delivered Lumens	System Watts	Lumens Per Watt	Weight	CCT	Voltage	CRI
BG1505100	LBSLEDA10L30K9WH	INC	75W	1032	16.4	63	2.0 lbs	3000K	120V	90
BG1521300	LBSQLEDA10L30K9WH	CFL	26W							
BG1535600	LBSMTKIT – Mounting kit for recessed downlight retrofit. Set of 8. Not required for J–box installation.									

LED DOWNLIGHTING

4" LED Recessed Downlight & Housing options



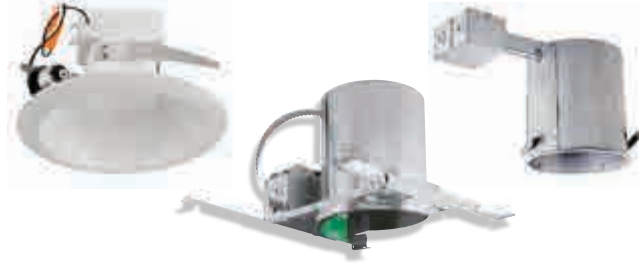
- Diffuse impact resistant polycarbonate lens
- Superior glare control
- Powder coat white reflector
- Screw base adapter with each LB4
- Suitable for wet location
- Uniform distribution
- Aesthetic appeal



4" LiteBox LED trim is designed for Prescolite or competitive 4" housings. Ideal for residential & light commercial applications. Impact resistant polycarbonate lens. Visually comfortable 55° cutoff. Minimum 60,000 hours at 25° ambient temperature.

Part #	Description	Equivalency		Delivered Lumens	System Watts	Lumens Per Watt	Weight	CCT	Voltage	CRI
BG1527100	LB4LEDA6L30K9WH	INC	60W	604	10.5	57.5	1.7 lbs	3000K	120V	90
BG1473900	BX4QL-120 : 4" Non-IC new construction housing.	Quick connect for LB4 interface.								
BG1474000	IBX4QL-120 : 4" IC new construction housing.									
BG1474100	RMN4QL-120 : 4" Non-IC remodel construction housing.									

6" LED Recessed Downlight & Housing options



- Diffuse impact resistant polycarbonate lens
- Superior glare control
- Powder coat white reflector
- Screw base adapter with each LB4
- Suitable for wet location
- Uniform distribution
- Aesthetic appeal



6" LiteBox LED trim is designed Prescolite or competitive 6" housings. Ideal for residential & light commercial applications. Impact resistant polycarbonate lens. Visually comfortable 55° cutoff. Minimum 60,000 hours at 25° ambient temperature

Part #	Description	Equivalency		Delivered Lumens	System Watts	Lumens Per Watt	Weight	CCT	Voltage	CRI
BG1488400	LB6LEDA8L30KWH	INC	65W	825	13	63	1.7 lbs	3000K	120V	80
BG1477800	LB6LEDA10L30KWH	INC	75W	1000	12	83		3500K		
BG1477900	LB6LEDA10L35KWH			1038		86				
BG1443200	DBXQL – 6" IC/Non-IC, new construction housing. No socket. Quick connect for LB6 interface.									
BG233700	RMNICD – 6" IC/Non-IC, remodel construction housing. LB6 trim c/w socket adapter.									

4" LED Commercial Down Lighting



- Aluminum, semi-diffuse alzak reflector
- Philips Fortimo LED driver with thermal management
- 0-10V dimming
- Suitable for wet location
- 22 gauge non-corrosive steel housing
- Pre-wired J-box with snap cover for easy access



LiteFrame 4" commercial grade LED down lights with remote phosphor technology offers colour consistency & long life. 0-10V dimming is a standard. Hanger bars ordered separately: B24 (t-bar) or B6 (ceiling joist)

Part #	Description	Equivalency		Delivered Lumens	System Watts	Lumens Per Watt	Weight	CCT	Voltage	CRI
BG1500800	LF4LEDG4 (housing)	INC	75W	1100	14.5	76	7	3500K	120-277V	80
BG1501000	4LFLED5G435K (LED trim)	CFL	26W				3			

6" LED Down Lighting



- Aluminum, semi-diffuse alzak reflector
- Philips Fortimo LED driver with thermal management
- 0-10V dimming
- Suitable for wet location
- 22 gauge non-corrosive steel housing
- Pre-wired J-box with snap cover for easy access



LiteFrame 6" commercial grade LED down lights with remote phosphor technology offers colour consistency & long life. 0-10V dimming is a standard. Hanger bars ordered separately: B24 (t-bar) or B6 (ceiling joist)

Part #	Description	Equivalency		Delivered Lumens	System Watts	Lumens Per Watt	Weight	CCT	Voltage	CRI
BG1500700	LF6LEDG4 (housing)	INC	75W	1100	14.5	76	5	3500K	120-277V	80
BG1500900	6LFLED5G435K (LED trim)	CFL	26W				3.5			
BG1502600	LF6LED8G4120 (housing)	INC	150W	3000	39	77	6	3500K	120-277V	80
BG1509300	6LFLED8G435K (LED trim)	CFL	42W				5			

2x2 & 2x4 T-Bar Mount LED Troffer



- 4 sided light leak protection
- Hinged optical system for easy access
- 0-10V dimming
- Full distribution LED troffer
- Reduced life cycle maintenance costs
- Direct replacement for fluorescent



Full distribution LED troffer. High transmission pattern 12 acrylic lens. Long life 60,000 hours (L80). IC rating. High reflectance baked white enamel finish.

Part #	Description	Equivalency		Delivered Lumens	System Watts	Lumens Per Watt	Weight	CCT	Voltage	CRI
		T5	T8							
93048975	LJT22-35HLG-FSA12-EDU	3 x 14W	3 x 17W	3845	43.07	89	11	3500K	120-277V	80+
93053880	LJT22-40HLG-FSA12-EDU	3 x 14W	3 x 17W	4051	43.07	94		4000K		
93048976	LJT24-35MLG-FSA12-EDU	2 x 28W	2 x 32W	4772	45.34	105	22	3500K		
93053881	LJT24-40MLG-FSA12-EDU	2 x 28W	2 x 32W	4880	45.34	107		4000K		

2x2 & 2x4 T-Bar Mount LED Architectural



- High efficiency acrylic lens provides high performance without pixilation
- LED modules & electrical components accessible from below
- 4 LED colour choices & lumen packages (standard lead times apply)
- 0-10V dimming
- Matte white painted reflector
- IC rating



Architectural style, high efficacy, sustainable design. 60,000 hours (L80), IC rating (except with thru-wiring). High transmission lens with linear prisms. Appropriate for offices, schools, medical, and public spaces. Surface mount & cable suspended mount available. Standard lead times apply.

Part #	Description	Equivalency		Delivered Lumens	System Watts	Lumens Per Watt	Weight	CCT	Voltage	CRI
		T5	T8							
93062973	LCAT22-35MLG-EDU	2 x 14W	2 x 17W	3259	31	108	15	3500K	120-277V	80+
93062974	LCAT22-40MLG-EDU	2 x 14W	2 x 17W	3326	31	110		4000K		
93062967	LCAT24-35LWG-EDU	2 x 28W	2 x 32W	4170	40	105	20	3500K		
93062968	LCAT24-40LWG-EDU	2 x 28W	2 x 32W	4307	40	108		4000K		
93062969	LCAT24-35MLG-EDU	2 x 28W	2 x 32W	4788	40	120		3500K		
93062970	LCAT24-40MLG-EDU	2 x 28W	2 x 32W	4886	40	122		4000K		

LINEAR SURFACE MOUNT

4ft LED Open Striplight



- Heavy die-formed steel channel
- Accessible LED boards & driver for future maintenance or upgrades
- 0-10V dimming
- Wire guard accessory
- Surface mount or suspended
- Modular replaceable LED components



This versatile strip is perfect for back-of-house locations and offers 60,000 hours at L80 lumen maintenance for many years of dependable service. 80+ CRI. High reflectance baked white enamel finish.

Part #	Description	Equivalency		Delivered Lumens	System Watts	Lumens Per Watt	Weight	CCT	Voltage	CRI
		T5	T8							
93052240	LCS4-35ML-EDU	2 x 28W	2 x 32W	5457	48	114	6	3500K	120-277V	80+
93056105	LCS4-40ML-EDU	2 x 28W	2 x 32W	5646	48	118	6	4000K		
982092925000000	CSWG4	4 ft Wire Guard, 13 gauge, c/w mounting clips								
984084158000000	CSHC	14 inch chain hanger assembly, c/w 2 lengths for 1 light fixture								

4ft Lensed Striplight



- Shielded with 100% frosted prismatic acrylic lens
- Accessible LED boards & driver for future maintenance or upgrades
- 0-10V dimming
- Up to 108 lumens per watt
- Surface mount or suspended
- Heavy die-formed steel channel



LCL is an excellent choice for back-of-house, stairwells, utility areas, storage and anywhere that a direct view of the LED is not desired. The product offers 50,000 hour life at L80 lumen maintenance for many years of dependable service. High reflectance baked white enamel finish.

Part #	Description	Equivalency		Delivered Lumens	System Watts	Lumens Per Watt	Weight	CCT	Voltage	CRI
		T5	T8							
93060761	LCL4-35ML-EDU	2 x 28W	2 x 32W	4898	47	104	8	3500K	120-277V	80+
93060762	LCL4-40ML-EDU	2 x 28W	2 x 32W	5107	47	108	8	4000K		
93062174	LCLWG4	4 ft Wire Guard, c/w mounting clips & fastening screws								
98408415800000	CSHC	14 inch chain hanger assembly, c/w 2 lengths for 1 light fixture								

4ft LED Wraparound



- Heavy gauge steel housing, die embossed for maximum rigidity
- Accessible LED boards & driver for future maintenance or upgrades
- Diffuser features flat bottom and vertical sides
- Modular replaceability of LED components
- Prismatic acrylic lens
- Interior overlay for smooth appearance without pixelation



The LAW LED wraparound is an excellent choice for hallways, closets, utility rooms, back-of-house locations and low ceiling areas. The product offers 50,000 hour life at L80 lumen maintenance for many years of dependable service. High reflectance baked white enamel finish.

Part #	Description	Equivalency		Delivered Lumens	System Watts	Lumens Per Watt	Weight	CCT	Voltage	CRI
		T5	T8							
93055614	LAW4-35ML-EDU	2 x 28W	2 x 32W	4557	48	95	12	3500K	120-277V	80+
93056100	LAW4-40ML-EDU	2 x 28W	2 x 32W	4714	48	99	12	4000K		

4ft Enclosed & Gasketed



- Smooth housing for easy cleaning
- Lens firmly secured with tamper resistance ready polyacetal latches
- 4 LED colour choices and lumen packages (standard lead times apply)
- Gasket is non-porous to ensure seal
- Impact resistant acrylic lenses
- Each light shipped with surface mount brackets



LXEM is a multi-functional enclosed LED product which serves rugged to severe conditions as well as food service areas. Housing is formed from UL 5VA fiberglass. F1 weatherability rating, suitable for indoor or outdoor use with respect to exposure to UV light. IP67 rating on 4ft. Standard ambient -20° to 25°C. UL Sanitation certified.

Part #	Description	Equivalency		Delivered Lumens	System Watts	Lumens Per Watt	Weight	CCT	Voltage	CRI
		T5	T8							
93055613	LXEM4-35ML-RFA-EU	2 x 28W	2 x 32W	4896	47	104	14	3500K	120-277V	80+
93056144	LXEM4-40ML-RFA-EDU	2 x 28W	2 x 32W	5065	47	108	14	4000K		
93060768	LXEM4-40HL-RFA-EDU	2 x 28W	2 x 32W	5799	52	112	14	4000K	120-277V	



CIMARRON SQUARE STEEL POLE ASSEMBLY

In Stock For Immediate Delivery²



CIMARRON HEAD:

- Full cutoff IDA approval
- Tri-tap blst 120/277/347V (250W & 400W MH)
- Step down transformer with 347V LED
- Straight arm, suitable for twin at 90 degrees

SSS POLES:

- Anchor bolts, template, base cover & top cap included
- Four sided drilling c/w hole plugs for three sides
- 16ft / 20ft - 11 gauge thickness. 25ft - 7 gauge thickness
- 4 inch square straight steel

Single Combo Ordering Number	Description	HID Equivalence	IES Distr. Type	CCT	Watts per head	Pole Height	Wind Rating
1CRH25H320401DB	250MH, Brz, c/w lamp	≤ 250W HID	III	5100K	295W	20 ft	120 MPH
1CRH40H320401DB	400MH, Brz, c/w lamp				460W	20 ft	
1CRH25H325407DB	250MH, Brz, c/w lamp				295W	25 ft	120 MPH
1CRH40H325407DB	400MH, Brz, c/w lamp				460W	25 ft	
1CLS48LU5K316401DB	48LED, UNV, Brz, 0-10V		110W	16 ft	120 MPH		
1CLS48LF5K316401DB	48LED, 347V, Brz, 0-10V		119W	16 ft			
1CL60LU5K320401DB	60LED, UNV, Brz, 0-10V		140W	20 ft	120 MPH		
1CL60LF5K320401DB	60LED, 347V, Brz, 0-10V		157W	20 ft			
1CL60LU5K325407DB	60LED, UNV, Brz, 0-10V		140W	25 ft	120 MPH		
1CL60LF5K325407DB	60LED, 347V, Brz, 0-10V		157W	25 ft			
1CL90LU5K325407DB	90LED, UNV, Brz, 0-10V		210W	25 ft	120 MPH		
1CL90LF5K325407DB	90LED, 347V, Brz, 0-10V		227W	25 ft			

Twin Combo Ordering Number	Description	HID Equivalence	IES Distr. Type	CCT	Watts per head	Pole Height	Wind Rating
2CRH25H320401DB	250MH, Brz, c/w lamp	≤ 250W HID	III	5100K	295W	20 ft	100 MPH
2CRH40H320401DB	400MH, Brz, c/w lamp				460W	20 ft	
2CRH25H325407DB	250MH, Brz, c/w lamp				295W	25 ft	100 MPH
2CRH40H325407DB	400MH, Brz, c/w lamp				460W	25 ft	
2CLS48LU5K316401DB	48LED, UNV, Brz, 0-10V		110W	16 ft	120 MPH		
2CLS48LF5K316401DB	48LED, 347V, Brz, 0-10V		119W	16 ft			
2CL60LU5K320401DB	60LED, UNV, Brz, 0-10V		140W	20 ft	100 MPH		
2CL60LF5K320401DB	60LED, 347V, Brz, 0-10V		157W	20 ft			
2CL60LU5K325407DB	60LED, UNV, Brz, 0-10V		140W	25 ft	100 MPH		
2CL60LF5K325407DB	60LED, 347V, Brz, 0-10V		157W	25 ft			
2CL90LU5K325407DB	90LED, UNV, Brz, 0-10V		210W	25 ft	100 MPH		
2CL90LF5K325407DB	90LED, 347V, Brz, 0-10V		227W	25 ft			

Wall Mount Combo Ordering Number	Description	HID Equivalence	IES Distr. Type	CCT	Watts per head	Mtg Height
WBCL1S48LU5K3DB	48LED, UNV, Brz, 0-10V	≤ 250W HID	III	5100K	110W	14 - 20ft
WBCL1S48LF5K3DB	48LED, 347V, Brz, 0-10V				119W	

Footnotes:

- 1) MH head c/w hydroformed optic. Consult Hubbell Canada for substitution with HPS, pulse start performance (segmented) optic.
- 2) Limited quantities in stock. All orders are subject to prior sales. Confirm availability with Hubbell Canada.
- 3) Hubbell Canada recommends consultation with qualified professionals for verification of overall system design, site suitability, foundation considerations and conformance to applicable codes, regulations and wind conditions.
- 4) Contact your regional Hubbell Lighting representative for the possibility of prepaid freight.
- 5) Substitution allowed for distribution & standard colour. Standard lead times apply.
- 5) 250W & 400W MH heads ship with lamp

Specification Page Downloads:
[CL1S - 48L](#)
[CL1 - 60L / 90L](#)
[CR - 25H / 40H](#)
[SSS Pole](#)

CX Commercial Lighting Control Panel



Save Time / Save Energy / Lower Costs / Increase Control

FEATURES

- For indoor/outdoor lighting control
- Replaces costly & labour intensive conventional time clocks & contactors
- 0-10V dimming capability
- Relays can be individually programmed & tied to specific inputs
- Astronomical time clock
- Priorities & masking allows for personalized control solutions
- Linked panel capability
- Pickering Ontario inventory
- Allows for multiple inputs

Let Hubbell's knowledgeable staff help design your CX programmable system today!

PANELS

Product number

CX083S00SPM
CX162S00SPM
CX163S00SPM
CX242S00SPM
CX243S00SPM
CXDIMCONTRBD

Description

CX08M PNL 120/347 W/SPACE ONLY SURFACE MOUNT
CX16M PNL 120/277 W/SPACE ONLY SURFACE MOUNT
CX16M PNL 347/480 W/SPACE ONLY SURFACE MOUNT
CX24M PNL 120/277 W/SPACE ONLY SURFACE MOUNT
CX24M PNL 347/480 W/SPACE ONLY SURFACE MOUNT
CX PANEL 8-CHANNEL DIMMING CONTROLLER BOARD



RELAYS

CXR2N
CXR3L
CXRTC
CXRTN

CXR RELAY 20A/1P EH/ NO 120/277VAC
CXR RELAY 30A/1P LATCH 120/277/347VAC
CXR RELAY 20A/2P EH/ NC 480VAC
CXR RELAY 20A/2P EH/ NO 480VAC



ACCESSORIES

CX Panel Accessories

PHOTOCELLS

The CX Panels support direct connection to HBA Low Voltage Photocells.

Features

- Open Loop photosensor
- Foot-candle range: 0.3–6,000 fc
- Indoor and outdoor versions
- Mounts vertically and horizontally
- Architecturally attractive design
- UL and cUL listed



MOTION SENSORS

The CX Panels support direct connection to HBA Omni™ Series Stand Alone Motion Sensors featuring IntelliDAPT®.

The ceiling mount OMNI™ series and wall mount LightOWL™ series sensors can be used with the CX Panel inputs without the use of power packs.



LOW VOLTAGE SWITCHES

The CX Panels support direct connection to HBA LVS Series Low Voltage momentary contact switches. These switches are available with or without LED indication. Add WH for White or IV for Ivory finish at the end of the part number.

CAT5 LOW VOLTAGE SWITCHES FOR DIMMING

For use with the CX Dimming Card, these switches are available in Raise-Lower and Master On/Off configurations.

CX Panel Dimming Card

Features

- Full range dimming with preset dimming levels
- Ramp Up, Fade Down, Minimum Dim Level
- Max Dim Level (Demand Response System Settings)
- Operates with 0-10V dimmable ballasts
- Provides manual and automatic control of dimming levels
- Upgrade option to existing and new CX Panels
- 8 Dimming channels per card
- Works with CAT5 Switches



LED Floodlight Selection Guide



	Floodlight Series	Beam Pattern	# LEDs	Delivered Lumens	Max Candle Power	System Watts	Energy Savings	Equivalency	LPW	CCT	Drivers/Current	Voltage
WIDE BEAM	ALF-6LU*	Wide	6	510	621	10	85%	26W CFL 70W MH	48	5100K	1@470mA	120-277V
	ALF-12LU*	Wide	12	1000	1208	20	69%	42W CFL 100W MH	47	5100K	2@470mA	120-277V
	FSL-7L*	6 X 6	7	2040	1450	26.5	82%	42W CFL 100+W MH	77	5100K	1@1050mA	120-277V
	FML-14L*	6 X 6	14	4285	2805	53	78%	2x42W CFL 150+W MH	81	5100K	1@1050mA	120-277V
	LFS-12LU-W	6 X 6	12	937	494	13	85%	70W MH	72	5100K	1@700mA	120-277V
	MHS-30LU-W	6 X 6	30	6,164	4,559	71	65%	250W MH	87	5100K	1@700mA	120-277V
	ARF3/ARF4	6 X 6	42/84	9,097/18,498	77,118/78,017	97/194	55%	250w/ 400W MH	98/100	3K,4K,5K	700mA	120-277V
MEDIUM BEAM	MLED-80LU-W	7 X 7	80	9,874	4,002	176	65%	400W MH	55	4800K	2@625mA	120-277V, 347V
	ARF1-K-10L-5K-070-W	6 x 6	10	2129	1,512	25	83%	42W CFL 100+W MH	84.5	5100K	1@700mA	120-277V
	ARF2-K-20L-5K-070-W	6 x 6	20	4486	2,978	52	80%	2x42W CFL 150+W MH	87	5100K	1@700mA	120-277V
	LFS-12LU-M	4 X 4	12	948	2,001	13	90%	70W MH	72	5100K	1@700mA	120-277V
	MHS-30LU-M	4 X 4	30	6,798	5,9331	71	75%	250W MH	96	5100K	1@700mA	120-277V
	ARF3/ARF4	4 X 4	42/84	9,097/19,368	77,118/78,017	97/194	55%	250w/ 400W MH	98/100	3K,4K,5K	700mA	120-277V
RM	MLED-80LU-M	5 X 5	80	11,121	13,749	178	66%	400W MH	62	4800K	2@625mA	120-277V, 347V
	ARF1-K-10L-5K-070-M	4 x 4	10	2285	6,842	25	83%	42W CFL 100+W MH	90	5100K	1@700mA	120-277V
	ARF2-K-20L-5K-070-M	4 x 4	20	4600	13,625	52	80%	2x42W CFL 150+W MH	89	5100K	1@700mA	347V*
	ARF1-K-10L-5K-070-RM	5 x 4	10	1875	3,185	25	75%	42W CFL 100+W MH	75	5100K	1@700mA	120-277V
NARROW BEAM	ARF2-K-20L-5K-070-RM	5 x 4	20	3926	6,582	52	76%	2x42W CFL 150+W MH	76	5100K	1@700mA	120-277V
	LFS-12LU-N	1 X 1	12	961	28,939	13	93%	70W MH	73	5100K	1@700mA	120-277V
	MHS-30LU-N	2 X 2	30	6,045	45,341	71	75%	250W MH	87	5100K	1@700mA	120-277V
	ARF3/ARF4	3 X 3	42/84	9,097/18,498	77,118/153,408	97/194	55%	250w/ 400W MH	98/100	3K,4K,5K	700mA	120-277V
	MLED-80LU-N	3 X 3	80	11,362	72,672	179	65%	400W MH	64	4800K	2@625mA	120-277V, 347V
	ARF1-K-10L-5K-070-N	3 x 3	10	2279	18,549	25	78%	42W CFL 100+W MH	90	5100K	1@700mA	120-277V
ARF2-K-20L-5K-070-N	3 x 3	20	4486	37,587	52	76%	2x42W CFL 150+W MH	91.5	5100K	1@700mA	120-277V	

* EXPRESSLINE

Note: table data is based on 2015 product information

LED Building Mount Selection Guide



	Wallpack	Spacing	Mounting Height	# LEDs	Delivered Lumens	System Watts	Energy Savings	Equivalency	LPW	CCT	Drivers/Current	Voltage	DLC Approved
	WGH-225L*	3 X - 4 X	15 - 20 ft	235	10,151	97	76%	400W	105	4000K	1@125mA	120-277V	Not Applicable
	Laredo LMC-30L	4 X	15 - 20 ft	30	6,023	71.7	71%	250W	84	5000K	2@700mA	120-277V, 347V	Yes
	PGM3/PVL3*	3 X - 4 X	15 - 20 ft	30	5,678/5,337	69/72.7	72%	250W	82/73	5100K	1@700mA	120-277V, 347V	Not Applicable
	DDL-140L-1*	4 X	15 - 20 ft	140	5,279	43.5	71%	250W	121	4000K	1@92mA	120V	Submitted
	Spaulding TRP/RDI/QSP	4 X	15 - 20 ft	30	5,062	53	74%	200W	96	5000K	1@525mA	120-277V	Yes
	WGH-110L*	3 X - 4 X	12 - 15 ft	110	4,888	53	78%	250W	92	4000K	1@140mA	120-277V	Not Applicable
	Spaulding TRP/RDI/QSP	4 X	12 - 15 ft	30	3,583	34	77%	150W	105	5000K	1@350mA	120-277V	Yes
	Laredo LMC-30L-035	4 X	12 - 15 ft	30	3,448	35.4	76%	150W	97.4	5000K	1@350mA	120-277V, 347V	Yes
	DDL-9L1*	4 X	12 - 15 ft	9	3,437	40	77%	175W	86/97	5000K	1@1280mA	120V	Yes
	LNC2-18L*	4 X	12 - 15 ft	18	3,311	42.3	72%	150W	78	5000K	2@700mA	120-277V	Yes
	DDL-56L*	4 X	12 - 15 ft	56	2,906	30	78%	175W	97	4000K	1@150mA	120V	Submitted
	LNC2-12L*	4X	12 - 15 ft	12	2,420	28.6	80%	150W	85	5000K	1@700mA	120-277V	Yes
	LNC2-9L/LNC-9L*	4 X	10 - 12 ft	9	1,460	22	78%	100W	88	5000K	1@700mA	120-277V	Yes
	LNC2-7L/LNC-7L*	4 X	Up to 11 ft	7	1,147	18	77%	70W	83	5000K	1@700mA	120-277V	Not Applicable
	TRPC Compact Sconce	3 X	10 - 12 ft	13	1,184	23	54%	50W	51	5000K	1@470mA	120-277V	Not Applicable
	NRG-312LU*	1X - 2X	Up to 10 ft	12	1120	18	64%	50W	63	5000K	1@350mA	120-277V	Not Applicable
	LNC-5L*	4 X	Up to 10 ft	5	967	12.8	74%	50W	75.5	5000K	1@700mA	120-277V	Not Applicable
	ALFW-6LU*	3 X	Up to 10 ft	6	905	10.7	85%	70W	85	5000K	1@470mA	120-277V	Not Applicable
	Euroluxe	3 X	Up to 10 ft	6	830	15.2	64%	42W CFL	55	5000K	1@700mA	120-277V	Not Applicable
	VWGL-1*	1X - 2X	Up to 10 ft	1	757	11	92%	150W	70	4000K	1@250mA	120-277V	Not Applicable

* EXPRESSLINE

Note: table data is based on 2015 product information



ALERA LIGHTING

ARCHITECTURAL AREA LIGHTING

BEACON PRODUCTS

COLUMBIA LIGHTING

DEVINE LIGHTING

HUBBELL CONTROL SOLUTIONS

HUBBELL INDUSTRIAL LIGHTING

HUBBELL OUTDOOR LIGHTING

KIM LIGHTING

LITECONTROL

PRECISION-PARAGON

PRESCOLITE

SECURITY LIGHTING

SPAULDING LIGHTING

SPORTSLITER SOLUTIONS

STERNER LIGHTING SYSTEMS

WHITEWAY



HUBBELL
Lighting

Hubbell Canada LP, Lighting Solutions
870 Brock Road South
Pickering, Ontario L1W 1Z8
www.hubbell-canada.com

Due to our continued efforts to improve our products, product specifications are subject to change without notice.
Copyright © 2016 HUBBELL LIGHTING All Rights Reserved. Printed in Canada.