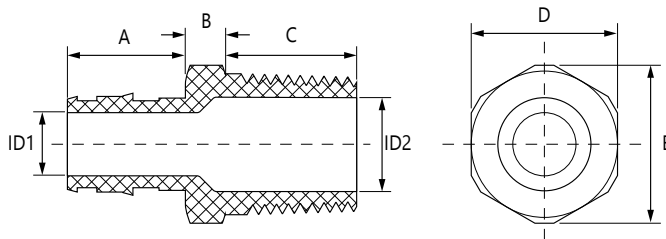


Job or Customer :	
Location :	
Engineer :	
<input type="checkbox"/> Complies with Spec <input type="checkbox"/> Alternate	Notes :
Contractor :	
HeatLink Rep :	
Submitted By :	Date :
Approved By :	Date :
P.O. Number :	Date :

Description

Solid no lead (Eco) Brass PEX F1960 x MNPT adapters for PEX-a potable water expansion systems.

Qty	Stk. #	Size	Dimension, in/(mm)							Weight, lb/(kg)
			A	B	C	D	E	ID1	ID2	
	EX27505NL	½" PEX × ½" MNPT	0.71 (18.0)	0.25 (6.4)	0.78 (19.8)	0.88 (22.4)	0.95 (24.1)	0.38 (9.7)	0.56 (14.2)	0.114 (0.052)
	EX27522NL	¾" PEX × ¾" MNPT	0.95 (24.1)	0.25 (6.4)	0.83 (21.1)	1.13 (28.7)	1.23 (31.2)	0.60 (15.2)	0.74 (18.8)	0.187 (0.085)
	EX27528NL	1" PEX × 1" MNPT	1.11 (28.2)	0.25 (6.4)	1.03 (26.2)	1.38 (35.1)	1.52 (38.6)	0.80 (20.3)	0.80 (20.3)	0.400 (0.181)



Technical Data

Specifications	
Material	No Lead (Eco) Brass - C69300
Operating pressure rating	180°F @ 100 psi (82.2°C @ 0.69 MPa)

Listings
 cNSFus-pw-G

Codes
 IAPMO UPC

Standards
 ASTM F877
 ASTM F1960
 CSA B137.5
 NSF/ANSI 14
 NSF/ANSI 61
 NSF/ANSI 372

Installation

Installation must follow all of HeatLink's instructions and guidelines.

Related Documents

- F1960 PEX-a Potable Water Expansion System Installation Guide (L3240)
- HeatLink Limited Plumbing Warranty

This page is intentionally blank.