

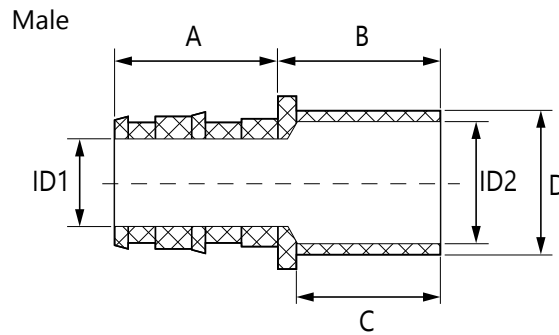
Job or Customer :	
Location :	
Engineer :	
<input type="checkbox"/> Complies with Spec <input type="checkbox"/> Alternate	Notes :
Contractor :	
HeatLink Rep :	
Submitted By :	Date :
Approved By :	Date :
P.O. Number :	Date :

Description

Solid no lead (Eco) Brass PEX F1960 x sweat adapters for PEX-a potable water expansion systems.

Male Adapter

Qty	Stk. #	Size	Dimension, in/(mm)						Weight, lb/(kg)
			A	B	C	D	ID1	ID2	
	EX27105NL	½" PEX × ½" M/Sweat	0.71 (18.0)	0.70 (18.0)	0.62 (15.7)	0.63 (16.0)	0.38 (9.7)	0.53 (13.5)	0.050 (0.023)
	EX27122NL	¾" PEX × ¾" M/Sweat	0.95 (24.1)	0.95" (24.1)	0.79 (20.1)	0.88 (22.4)	0.60 (15.2)	0.77 (19.6)	0.108 (0.049)
	EX27128NL	1" PEX × 1" M/Sweat	1.18 (29.9)	1.11 (28.2)	0.95 (24.1)	1.13 (28.7)	0.80 (20.3)	1.00 (25.4)	0.195 (0.088)



Technical Data

Material	No Lead (Eco) Brass - C69300
Operating pressure rating	180°F @ 100 psi (82.2°C @ 0.69 MPa)

Specifications

Listings
 cNSFus-pw-G

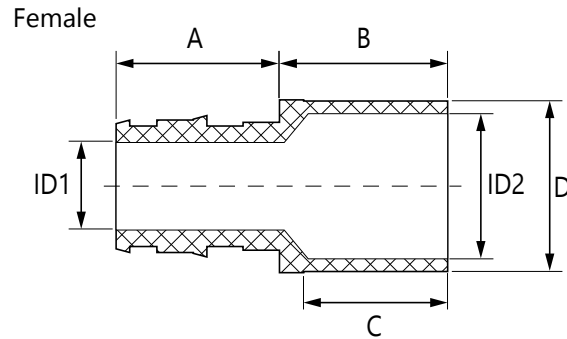
Codes
 IAPMO UPC

Standards

ASTM F877
 ASTM F1960
 CSA B137.5
 NSF/ANSI 14
 NSF/ANSI 61
 NSF/ANSI 372

Female Adapter

Qty	Stk. #	Size	Dimension, in/(mm)						Weight, lb/(kg)
			A	B	C	D	ID1	ID2	
	EX27205NL	½" PEX × ½" F/Sweat	0.71 (18.0)	0.73 (18.5)	0.52 (13.2)	0.74 (18.8)	0.38 (9.7)	0.63 (16.0)	0.064 (0.029)
	EX27222NL	¾" PEX × ¾" F/Sweat	0.95 (24.1)	1.10 (27.9)	0.77 (19.6)	1.01 (25.7)	0.60 (15.2)	0.88 (22.4)	0.145 (0.066)
	EX27228NL	1" PEX × 1" F/Sweat	1.18 (29.9)	1.22 (30.9)	0.93 (23.6)	1.28 (32.5)	0.80 (20.3)	1.13 (28.7)	0.242 (0.110)



Installation

Installation must follow all of HeatLink's instructions and guidelines.

Related Documents

- F1960 PEX-a Potable Water Expansion System Installation Guide (L3240)
- HeatLink Limited Plumbing Warranty